

BIGBOOK

SECURITY
BUSINESS

SECURITY
EXECUTIVE

LOCKSMITH LEDGER
International

THE SECURITY INDUSTRY'S PRODUCT GUIDE • **SPRING 2026**

StarLink Fire MAX2 Alarm Communicator from Napco

NAPCO's StarLink Fire MAX2 Communicator delivers a powerful, reliable, and cost-effective solution for modern alarm communications.

Designed with advanced performance in mind, it features better range technology with dual antennas, providing strong and consistent cellular connectivity, even in challenging environments. Dealers benefit from lower cost plus an instant pro rebate, while faster installations help reduce labor time and increase efficiency, making it a preferred choice among technicians.

Engineered for simplicity and compliance, it supports easier AHJ inspections with color-coded cell network ID LEDs, allowing for quick visual verification in the field.

Napco's direct-to-carrier native accounts ensure signals never roam outside the U.S., enhancing reliability and control.

With SOC 2 cybersecurity standards, the system provides critical data and liability protection, while all communications are securely managed through a UL and ASRA-certified NOC, ensuring signals remain within the United States.

Now featuring optional direct-to-central station reporting, StarLink Fire Max2 offers added flexibility for a variety of monitoring configurations.

As the choice of more national providers, it delivers the performance, security, and value professionals depend on.



<https://napcosecurity.com/starlink>

Request more information: www.securityinfowatch.com/53097154

Salto DBolt Touch Outdoor Smart Deadbolt

The Salto DBolt Touch Outdoor is an IP55-rated smart deadbolt built for exterior residential doors exposed to weather. It extends keyless access to entry doors across multifamily properties, single-family homes, and mixed-use buildings where mechanical deadbolts have long been the only option.

The lock fits standard deadbolt door preparations with no drilling required, supporting retrofit installs and new construction alike. It accommodates doors from 1-3/8 to 3-11/32 inches thick and runs on three AA batteries with no wiring.

Residents can unlock using RFID keycards and fobs, NFC, JustIN Mobile BLE credentials, or PIN codes through the integrated keypad. The lock is compatible with Salto Space, Salto KS, and Salto Homelock platforms, supporting both on-premise and cloud-based access management.

Built for outdoor conditions across a temperature range of -31°F to +140°F, the DBolt Touch Outdoor is BHMA A156.40 AAA certified and UL10C rated for 180 minutes on metal doors. Available finishes include satin chrome, polished chrome, satin brass PVD, and black chromium.

<https://saltosystems.com/en/products/dbolt-touch>



Request more information: www.securityinfowatch.com/55359752

Acoem ATD Gunshot Detection Sensor

Empower your security stack with Acoem ATD, a next-generation gunshot detection solution that delivers true acoustic intelligence.

Unlike traditional systems that rely on simple volume thresholds or complex microphone meshes, Acoem ATD uses a single, edge-based sensor to provide precise, intelligence-driven protection.

At the heart of the system is our Dual-Detection Standard and a 96-Attribute Acoustic Intelligence Engine. By analyzing unique waveforms and ballistic characteristics directly at the edge, the sensor reliably detects a gunshot by recognizing the unique "fingerprint" of an acoustic event. The ATD sensor distinguishes gunfire from environmental "noise", such as construction or fireworks, with elite precision. This edge-processing eliminates the need for expensive servers, cloud dependency, or complex network infrastructure.

When a threat is detected, the system provides immediate visual verification by instantly slewing connected PTZ cameras to the identified coordinates. This transforms acoustic data into validated evidence, giving first responders critical situational awareness in real time.

With a 500-foot coverage radius per sensor, Acoem ATD is as flexible as it is powerful. Whether used for permanent perimeters or mobile coverage at festivals and public events, the system deploys easily to match your evolving risk landscape.

Backed by 30+ years of acoustic expertise, Acoem ATD is the smart choice for protecting modern communities, critical infrastructure, and public venues.

www.acoem.com/en/products/acoustic-threat-detection/atd



Request more information: www.securityinfowatch.com/55274876

Camden Announces New Battery-Powered Door Alarms

Camden Door Controls is proud to announce the launch of two new battery-powered door alarm systems.

CX-DA800 Exit Alarms provide an instant audible and visual alarm indication of unauthorized exit or entry of mechanically secured doors. CX-DA810 Door Prop Alarms provide an audible and visual alarm indication of mechanically secured doors being held open for more than a specified time.

These compact and attractive UL-Listed door alarms are compatible with the widest range of industry-standard mortise cylinders and cams - ensuring maximum flexibility and integration with existing master key systems.

Features include immediate triggering with LED and buzzer sounds, automatic silence after two minutes or manually with key, a loud 105 dB alarm, and 9 VDC battery operation with a low-battery alert.

Both models can be installed on either in-swinging or out-swinging doors and are offered in a choice of grey or black, in either indoor or weatherized outdoor models. A mortise cylinder (keyed alike or keyed differently) and a cylinder installation tool are also included.

www.camdencontrols.com

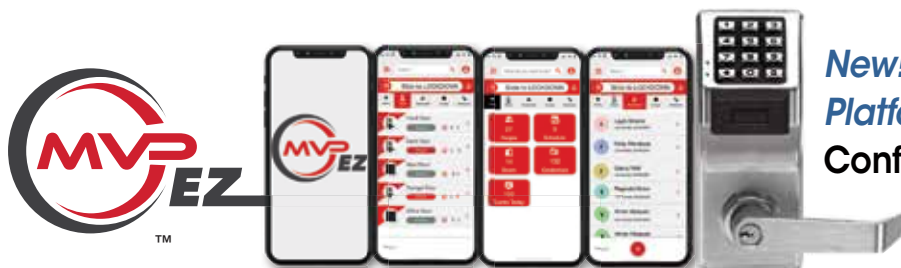


Request more information: www.securityinfowatch.com/55374273



From the Curb to the Cloud: Integrated Access Solutions from a Single Source

- **Control a Few Doors to Many - Using Unified Software, Locks & Panels, All Built & Integrated by Napco -** Start as simply as using top-rated, low maintenance Trilogy or wireless networked Trilogy PIN/Prox Networkx locks on any door- Now All Weatherproof. Then scale from there- Any number of doors, users & credential tech - ALL on choice of numerous platforms, standalone, cloud or App.
- **Every door, everywhere- Trilogy & Trilogy Networkx Networked & Designer ArchiTech** cylindrical, mortise, exit & narrow-stile locks, are available for every door & application integrated with advanced Napco Controllers & supporting multiple credentials: Mobile, NFC, BLE, MiFare, Prox, iClass.
- **Know one, know all. Less to Train/Learn, Trilogy & wireless networked Networkx models feature common familiar operation, programming, & footprint** (most) for every door, user, building & application inside & out - *Easy upgrades- No costly "rip-out & replacements"*
- **More Savings from Operating Expenses:** Trilogy is award-winning for its long-battery life, low-maintenance & lowering operational costs + wireless Networkx eliminates door-to-door labor for audits & program updates.
- **More Remote Account Management Options:** Affordable, flat by-door fees, easy security user-, schedule- & door-management services for school, business, campus and more. Smartphone options for real-time emergency or occupant alerts &/or managing access events, lockdown and mustering badgeholders in.



New! MVP EZ Access App-Only, Remote Cloud-Hosted Platform for All Trilogy Networkx Locks & NA-Panels: Configure, Command & Control All from a Smartphone.

NAPCO
Access 1.800.645.9445

Alarm Lock | Continental | Marks

Trilogy, Networkx, ArchiTech MVP & MVP EZ/Access are trademarks of NAPCO.

Get
Started



**NO WIRES.
NO BATTERIES.
NO PROBLEM.**



900 MHz. No-Battery Wireless Door Control System

Kinetic™ by Camden is an advanced 'Power Harvesting' wireless door control system, that uses the energy created by the mechanical movement of pressing the switch to power the wireless transmitter. Kinetic™ next generation wireless door activation offers significant installation cost savings eliminating the need for wiring from the controller to the switches. With no batteries to dispose of - Kinetic™ switches are also environmentally friendly.

For more information, visit www.camdencontrols.com



LOCKING | CONTROL | ACTIVATION | ACCESS

www.camdencontrols.com | info@camdencontrols.com | US: 1-877-726-3367 | CAN: 1-877-226-3369



BIGBOOK

THE SECURITY INDUSTRY'S PRODUCT GUIDE



TABLE OF CONTENTS



B6 Access Control & Door Hardware



B12 Fire & Life Safety



B12 Communications



B14 Perimeter



B14 Power Supplies



B16 Threat Detection



B16 Video Surveillance



B18 Business Management Software

SPRING 2026

Advertiser Name	Page
Altronix Corporation	B9
Banner Solutions	B5
Camden Door Controls	B3
Camden Door Controls	B19
DoorKing	B7
NAPCO Security Technologies	B2
Salto Systems	B11
SDC-Security Door Controls	B13
SECKLOCK	B20
Viking Electronics	B15
B.I.G. Enterprise	B10
Valcom	B4
FieldHub	B18

This index is supplied as a service to our readers. The publisher assumes no liability for omissions or errors.

*All Showcase Products in this publication are paid advertisements, as are a limited number of regular product listings.



PUBLISHED BY

30 Burton Hills Blvd., Suite 185
Nashville, TN 37215

THE BIG BOOK

is a supplement to *Locksmith Ledger*,
Security Business and
Security Executive magazines.

EDITORIAL

Editor, *The Big Book* | Paul Rothman
(847) 454-2731
prothman@securitybusinessmag.com

Editorial Director | Steve Lasky
(847) 454-2719
steve@securityinfowatch.com

Editor, *Locksmith Ledger* | Paul Ragusa

Editor, *Security Business* | Paul Rothman

Editor, *Security Executive* | Steve Lasky

SALES

VP/Market Leader - Public Safety, Security and Vending Group | Bill MacRae
(732) 804-1732; bmacrae@endeavorb2b2.com

Director of Business Development

Jolene Gully-Bolton
(480) 524-1119
jgully@endeavorb2b2.com

Western US & Western Canada

Security Business, SecExec, SIW

Kevin Freel
(920) 212-2241
kfreel@endeavorb2b.com

Sales, *Locksmith Ledger*

Travis Gipson
(205) 409-0843
tgipson@endeavorb2b.com

PRODUCTION

Production Manager | Jane Pothlanski
jpothlanski@endeavorb2b.com

Ad Services Manager | Deanna O'Byrne
dobyrne@endeavorb2b.com

Audience Development Manager | Delicia Poole
dpoole@endeavorb2b.com

Art Director | Julie Whitty

ENDEAVOR BUSINESS MEDIA, LLC

CEO | Chris Ferrell

COO | Patrick Rains

CDO | Jacquie Niemiec

CALO | Tracy Kane

CMO | Amanda Landsaw

EVP Infrastructure

& Public Sector Group | Kylie Hirko

VP of Content Strategy, Infrastructure & Public

Sector Group | Michelle Kopier

Subscription Customer Service

PO Box 3257, Northbrook, IL 60065-3257
Toll-Free 877-382-9187; Local 847-559-7598
Circ.SecDealer@omeda.com

Article Reprints

To purchase article reprints, please email
Director of Business Development, Jolene Gully-Bolton:
jgully@endeavorb2b.com

Printed in the USA. Copyright 2026 Endeavor Business Media, LLC.
All rights reserved. No part of this publication may be reproduced or
transmitted in any form or by any means, electronic or mechanical,
including photocopy, recordings or any information storage or retrieval
system, without permission from the publisher.

Endeavor Business Media, LLC does not assume and hereby disclaims
any liability to any person or company for any loss or damage caused
by errors or omissions in the material herein, regardless of whether
such errors result from negligence, accident or any other cause
whatsoever. The views and opinions in the articles herein are not to
be taken as official expressions of the publishers, unless so stated. The
publishers do not warrant, either expressly or by implication, the factual
accuracy of the articles herein, nor do they so warrant any views or
opinions offered by the authors of said articles.

Instant Lockdown Communication When Seconds Matter

In critical situations, clear communication saves lives. Valcom's LCD Display handles your daily communications as well as real-time alerts such as lockdowns with bold visuals and unmistakable messaging - ensuring every classroom responds quickly and correctly. And now, the LCD can also serve as a location beacon for our new V-Guardian Alert wearable panic button.

Learn how to protect your campus:



800.825.2661 VALCOM.COM

VALCOM
Potter Global Technologies

Door Hardware Done Right

banner[™]
SOLUTIONS

- ◆ Fully-Stocked & Ready to Ship
- ◆ Flexible Solutions for Every Locksmith
- ◆ Industry-Leading Keying
- ◆ Seamless Ordering



Scan this code to see Banner's real-time inventory of the quality hardware from

ALLEGION[™]



banner[™]
SOLUTIONS

888.362.0750



bannersolutions.com



Camden Announces New Battery-Powered Door Alarms

Camden Door Controls is proud to announce the launch of two new battery-powered door alarm systems.

CX-DA800 Exit Alarms provide an instant audible and visual alarm indication of unauthorized exit or entry of mechanically secured doors. CX-DA810 Door Prop Alarms provide an audible and visual alarm indication of mechanically secured doors being held open for more than a specified time.

These compact and attractive UL-Listed door alarms are compatible with the widest range of industry-standard mortise cylinders and cams – ensuring maximum flexibility and integration with existing master key systems.

Features include immediate triggering with LED and buzzer sounds, automatic silence after two minutes or manually with key, a loud 105 dB alarm, and 9 VDC battery operation with a low-battery alert.

Both models can be installed on either in-swinging or out-swinging doors and are offered in a choice of grey or black, in either indoor or weatherized outdoor models. A mortise cylinder (keyed alike or keyed differently) and a cylinder installation tool are also included.

www.camdencontrols.com



Request more information: www.securityinfowatch.com/55374273

MVP Cloud Unified Access Ecosystem Integrating Napco Software & Hardware

Napco's MVP Access is a cloud-hosted access control platform supported by a robust hardware ecosystem designed to integrate seamlessly for scalable, real-world security solutions.

At the core are Napco's NA-Series Cloud-Ready Panels, available in 1- and 2-door configurations. Engineered for fast installation and low labor costs, these controllers feature built-in Ethernet, support for Wiegand and OSDP readers, and capacity for up to 25,000 users. Their compact design and cloud connectivity eliminate the need for additional on-site hardware, making them ideal for applications ranging from single-door installs to large, multi-site deployments.

Complementing the panels are industry-leading locking solutions from Alarm Lock and Marks USA, fully unified within the MVP platform.

Alarm Lock's Trilogy Networx and Trilogy Touch locks deliver proven durability, wireless networking, and flexible credential options including PIN, prox, and mobile access. Marks USA enhances the offering with architecturally styled ArchiTech Locks and smart wireless interconnected deadbolts that combine modern design with rugged, reliable performance.

Together, these integrated components create a cohesive access control system that is easy to deploy, simple to manage, and built to scale – giving dealers, integrators, and end-users a future-ready solution that grows with their needs.

<https://napcoaccesspro.com/cloud-based-access-control>



Request more information: www.securityinfowatch.com/55238090

Altronix Trove Plus Pre-Wired Kits



Altronix Trove Plus Pre-Wired Kits provide a streamlined solution for integrating access control and power within a single, organized enclosure. Designed to combine Altronix power and accessories with controllers from over 50 leading manufacturers, Trove simplifies system design, installation, and maintenance. These factory-assembled, pre-configured kits reduce wiring time, minimize errors, and improve overall efficiency in the field. Available in scalable wall- or rack-mount configurations, Trove enhances wire management

while offering a convenient single point of service. With the expanded capabilities of Trove Plus, support now extends to even more access control platforms, allowing for flexible deployment across virtually any environment. Backed by a lifetime warranty, Trove delivers a reliable, efficient approach that reduces labor costs and accelerates installation.

www.altronix.com/system_design_tools/trove

Request more information: www.securityinfowatch.com/53097178

SDC Data Center Access and Egress Control Solutions

No amount of perimeter intrusion detection, video analytics, network security, data encryption, multi-factor authentication, or data backup is effective unless a data center's exterior and interior doors are safe and secure. Essential door control components for data centers include the SDC AUTO series low-energy swing door operators with a built-in 1-amp+ power supply. They can provide power for the SDC 7700 series of motorized latch retraction and solenoid controlled locksets that stay latched even when unlocked, maintaining fire door integrity. These and other SDC electrified hardware like exit devices, digital keypads, shear locks, and push plates, provide physical security for data centers.



www.sdcsec.com/DatacenterSecurity

Request more information: www.securityinfowatch.com/55374316

ProdataKey Red Wireless Locksets

ProdataKey's Red Wireless Locksets allow you to control where you couldn't before. Designed for seamless, reliable performance, the Red Wireless Locksets bring the power of wireless access to any door. These locking solutions allow dealers to simplify installations, save on wire costs, and install in hard-to-reach spaces. With the Red Wireless Locksets – available as the Red Cylindrical Lock or Red Deadbolt – installers gain efficiency, adaptability, and dependable control across more doors than ever before, giving end users greater convenience and peace of mind daily.



<https://prodatakey.com/red-wireless-locksets>

Request more information: www.securityinfowatch.com/55372647

Alarm Controls: Everyday Access Control, Simplified

When access control needs to be reliable, straightforward, and built for daily use, start with Alarm Controls. From maglocks to push buttons and no-touch sensors, Alarm Controls delivers dependable access solutions for high-traffic commercial environments. Whether securing perimeter or interior openings, our full line of products ensures seamless integration for any need. Designed for quick installation and consistent performance, Alarm Controls delivers everyday access control – made simple. Visit us online or follow Alarm Controls on LinkedIn and Facebook.



www.alarmcontrols.com

Request more information: www.securityinfowatch.com/10212738

eVolve

THE NEXT GENERATION
OF ACCESS CONTROL

Smart Programming, at Your Fingertips

LCD interface and automatic USB backup.



2170 Slide



2160 Swing

The first two models in DKS's new line of eVolve Gate Operators are built from the ground up with the all-in one eVolve Controller Board, featuring simple onboard programming through a bright LED display. Once setup is complete, **all settings save automatically to the onboard USB** – making it easy to restore after maintenance. An added upgrade, the Accessory Hub, lets installers plug in optional cards for Loop Detectors (3), Edge, and a Radio Receiver programmable for MicroClik or MicroPlus RF remotes.

- Powerful Brushless DC Motors – up to 4,000 lb Slide & 1,800 lb Swing
- 115/230V Selectable Power Input
- LCD Programming Display
- 4 Programmable Relays
- 6 Programmable UL Inputs
- Built-in Back-up Batteries



DKS[®]

DOOR KING[®] For more information:

800-673-3299 • info@doorking.com

doorking.com/evolvegates



Salto DBolt Touch Outdoor Smart Deadbolt

The Salto DBolt Touch Outdoor is an IP55-rated smart deadbolt built for exterior residential doors exposed to weather. It extends keyless access to entry doors across multifamily properties, single-family homes, and mixed-use buildings where mechanical deadbolts have long been the only option.

The lock fits standard deadbolt door preparations with no drilling required, supporting retrofit installs and new construction alike. It accommodates doors from 1-3/8 to 3-11/32 inches thick and runs on three AA batteries with no wiring.

Residents can unlock using RFID keycards and fobs, NFC, JustIN Mobile BLE credentials, or PIN codes through the integrated keypad. The lock is compatible with Salto Space, Salto KS, and Salto Homelock platforms, supporting both on-premise and cloud-based access management.

Built for outdoor conditions across a temperature range of -31°F to +140°F, the DBolt Touch Outdoor is BHMA A156.40 AAA certified and UL10C rated for 180 minutes on metal doors. Available finishes include satin chrome, polished chrome, satin brass PVD, and black chromium.

<https://saltosystems.com/en/products/dbolt-touch>



Request more information: www.securityinfowatch.com/55359752

Camden Introduces 1/2-inch Surface Mount RIM Strike With Preload

Camden Door Controls has introduced a new 1/2-inch version of its award-winning surface mount RIM strike with 15 lbs. preload.

"The Camden 1299 Series strikes are Grade 1 rated, with UL 1034/294 and ANSI/BHMA listings," said Dave Malen, Camden's President. "Available in brushed stainless steel or black finish, these 1299 strikes offer 'Universal' performance with selectable 12/24V, AC/DC voltage, and fail-secure/fail-safe operation."

With latch monitor included, the 1299 Series strikes are packaged with 1/8-inch and 1/4-inch spacer plates to accommodate up to 3/4-inch latch projection. A metal marking jig is also included in the package, making installation fast and easy.

1299 Series Preload RIM strikes avoid the most common cause of strike failure by withstanding up to 15 lbs. of pressure against the strike's keepers (jaws). Preload pressure can be caused by differences in air pressure on each side of the door (particularly a stacking effect common in stairwells), a misaligned door, or simply someone pushing on the door before the strike is unlocked.

Backed by an exclusive no-hassle 5-year warranty, Camden's 1299 Series strikes are in stock and available for order.

www.camdencontrols.com



Request more information: www.securityinfowatch.com/55270554

HES: Every Lockset. Every Application.

Built to perform across every opening, HES electric strikes support everything from straight-forward retrofits to complex, fully integrated access control systems. With a broad portfolio

designed for specific applications, HES combines intelligent design, flexible configurations, and proven reliability to help professionals choose the right strike for every opening. HES delivers trusted performance across every access point. Visit the links below to learn more or follow HES on LinkedIn and Facebook.

<http://hesinnovations.com>

Request more information: www.securityinfowatch.com/10213861



Adams Rite: The Trusted Fit for Aluminum & Glass Openings

Adams Rite is the Aluminum Hardware Authority, specializing in door and door hardware solutions for narrow stile aluminum applications. From electromechanical deadlocks and deadlatches to preload capable electric strikes, and electrified exit devices and trim, Adams Rite offers practical and quality code-compliant solutions for retrofitting and upgrading interior and exterior aluminum and glass openings, adding access control to improve the safety and security of your business. Our products are available in multiple finish options to match almost any frame creating a sleek, aesthetic look. Follow Adams Rite on Facebook, LinkedIn, and Twitter or visit the links below.

From electromechanical deadlocks and deadlatches to preload capable electric strikes, and electrified exit devices and trim, Adams Rite offers practical and quality code-compliant solutions for retrofitting and upgrading interior and exterior aluminum and glass openings, adding access control to improve the safety and security of your business. Our products are available in multiple finish options to match almost any frame creating a sleek, aesthetic look. Follow Adams Rite on Facebook, LinkedIn, and Twitter or visit the links below.

www.adamsrite.com/solutions

Request more information: www.securityinfowatch.com/10212663



Von Duprin 22EO Rim Exit Device

The Von Duprin 22EO Rim Exit Device, available at Banner Solutions, delivers reliable, code-compliant egress for high-traffic commercial environments. Engineered for durability and smooth operation, the 22EO is ideal for offices, schools, retail, and healthcare facilities. Its streamlined design supports fast installation and consistent functionality, helping reduce maintenance concerns over time. Built to meet rigorous life-safety standards, this exit device ensures secure, efficient exit in emergencies without compromising everyday access. Explore the Von Duprin 22EO and a full range of door and security products with support, availability, and service you can depend on at Banner Solutions.

Engineered for durability and smooth operation, the 22EO is ideal for offices, schools, retail, and healthcare facilities. Its streamlined design supports fast installation and consistent functionality, helping reduce maintenance concerns over time. Built to meet rigorous life-safety standards, this exit device ensures secure, efficient exit in emergencies without compromising everyday access. Explore the Von Duprin 22EO and a full range of door and security products with support, availability, and service you can depend on at Banner Solutions.

www.bannersolutions.com

Request more information: www.securityinfowatch.com/12071932



Suprema XPass Q2 QR and RFID Reader

Suprema's XPass Q2 is an intelligent QR and RFID reader designed to support facilities managing high volumes of users across visitor, membership and ticketing environments. The device combines native QR and barcode authentication with RFID card and BLE and NFC mobile credentials in a single reader, enabling operators to manage employees, visitors, members and ticket holders through one device without requiring separate systems or dedicated entry lanes. The unit features a dedicated scanning module engineered for fast and reliable reads across varying lighting conditions and presentation distances. Clear LED indicators and adaptive audio feedback are designed to help maintain throughput in high-traffic entry points. The reader also carries an IP65 rating, supporting deployment in both indoor and outdoor environments.

Request more information: www.securityinfowatch.com/55369722





RACK MOUNT



HARDENED OUTDOOR



WALL MOUNT

ACCESS & POWER INTEGRATION... ...ENDLESS POSSIBILITIES

TROVE™ lets you design and deploy your preferred brand of access control with Altronix power solutions in virtually any environment.

- Simplifies board layout & wire management
- Reduces installation and labor cost
- Scalable for any size system
- Available as pre-configured and pre-wired kits

Streamline your access control deployments with **TROVE™**. Only from Altronix.

Run With It™



Securitron: Standard Solutions for Non-Standard Openings

Securing non-traditional openings comes with unique demands. Securitron's solutions for specialty applications meet those challenges with the strength, reliability, and seamless integration trusted to secure even the most unconventional spaces. From securing gates and roll-up doors to sliding entries and cabinets, Securitron delivers the strength and flexibility to protect unconventional openings. Whether you're working on a retrofit or a new install, our maglocks, cabinet locks, and gate locks are built to perform, easy to adapt, and backed by our trusted MagnaCare® lifetime warranty. When the application is anything but ordinary, trust Securitron to help you get it done right. Visit the links below to learn more or follow Securitron on LinkedIn and Facebook.

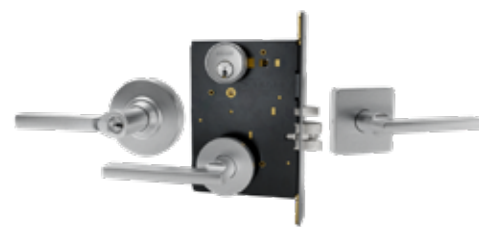


www.securitron.com

Request more information: www.securityinfowatch.com/10214963

Schlage Performance Series Locks, Available from SECLOCK

When performance and value matter, Schlage's Performance Series delivers. Engineered for applications ranging from high-traffic commercial environments to interior and low-traffic doors, the PM, PC, and PT Series offer a versatile range of mortise, cylindrical, and tubular locking solutions. The PM Series delivers heavy-duty Grade 1 mortise performance with electrified options; the PC Series offers Grade 1 cylindrical locks in a variety of lever designs and finishes; and the PT Series provides purpose-built Grade 2 tubular locks for interior applications, all at a budget-friendly price point. For every electrical and mechanical locking need, SECLOCK is your trusted source, carrying the full Schlage Performance Series lineup, in stock and ready to ship.



<https://SECLOCK.com>

Request more information: www.securityinfowatch.com/10215009

iLOQ Battery-Free Mortise Cylinder

iLOQ's patented ANSI mortise cylinder is designed to modernize existing doors without the need for wiring, batteries or network infrastructure. Built for retrofit into North American lock standards, the cylinder can be installed in minutes, allowing organizations to upgrade to digital access control with minimal disruption to facilities. The lock generates its own operating power during unlocking by drawing energy from an NFC-enabled smartphone or key fob. By eliminating internal batteries, the system reduces maintenance requirements while supporting fully keyless credential use. Access credentials are managed remotely through a secure cloud-based platform, enabling administrators to issue, modify or revoke permissions without on-site intervention.



Request more information: www.securityinfowatch.com/55359849

dormakaba EasyAssist Low Energy Door Operator

The EasyAssist Low Energy Operator door automation solution from dormakaba provides controlled, low-energy motion for improved accessibility and user safety. The operator is suited for a range of applications, including offices, medical facilities, hotels, retail stores, schools, and multifamily residential buildings. It is designed to automate both standard doors and fire-rated doors and comes in four operating modes along with additional configurable functions. In automatic mode, doors can be activated using switches such as push plates or touchless wave plates. The unit is designed for straightforward planning and installation, with a compact form factor intended to integrate into various door configurations. The low-energy operation supports compliance with accessibility requirements while delivering consistent door performance.



Request more information: www.securityinfowatch.com/55359483



TRUSTED AT THE PERIMETER

Code-compliant. Custom-built.
Designed to protect your people
and your site.

SECURITY THAT SHOWS UP READY.

bigbooth.com / 800-669-1449 / sales@bigbooth.com



Aliro-Certified Keypad 2 NFC from Nuki

Nuki's Keypad 2 NFC is an Aliro-certified keypad for residential electronic door locks. It brings the familiarity of Tap-to-Pay experiences



directly to the home, working in conjunction with a Matter-capable Nuki Smart Lock and supporting digital credentials such as Apple Home Key and Samsung Digital Home Key, along with Aliro-compatible credentials stored in a digital wallet. Users need a compatible mobile device and a Matter-enabled hub from their chosen ecosystem provider. The device supports five access methods: Apple Home Key, Samsung Digital Home Key, tap-to-unlock via the Nuki App, fingerprint recognition, and personalized access codes. It can store up to 20 fingerprints, 35 tap-based keys, and 200 access codes.

Request more information:

www.securityinfowatch.com/55368184

SALTO **W**ECOSYSTEM



Smart building management solutions.

Salto delivers the most advanced, flexible, and secure access control solutions for all types of industry applications.

salto 
INSPIRED ACCESS

salto.us

StarLink Fire MAX2 Alarm Communicator from Napco

NAPCO's StarLink Fire MAX2 Communicator delivers a powerful, reliable, and cost-effective solution for modern alarm communications.

Designed with advanced performance in mind, it features better range technology with dual antennas, providing strong and consistent cellular connectivity, even in challenging environments. Dealers benefit from lower cost plus an instant pro rebate, while faster installations help reduce labor time and increase efficiency, making it a preferred choice among technicians.

Engineered for simplicity and compliance, it supports easier AHJ inspections with color-coded cell network ID LEDs, allowing for quick visual verification in the field. Napco's direct-to-carrier native accounts ensure signals never roam outside the U.S., enhancing reliability and control.

With SOC 2 cybersecurity standards, the system provides critical data and liability protection, while all communications are securely managed through a UL and ASRA-certified NOC, ensuring signals remain within the United States.

Now featuring optional direct-to-central station reporting, StarLink Fire Max2 offers added flexibility for a variety of monitoring configurations.

As the choice of more national providers, it delivers the performance, security, and value professionals depend on.

<https://napcosecurity.com/starlink>



Request more information: www.securityinfowatch.com/53097154

Mircom FX-240N Fire Panel

The FX-240N is a single loop networkable fire alarm control panel designed for small-to-medium projects, offering full UL/ULC compliance and installation-ready convenience. It comes preassembled with a mainboard, display, and enclosure (red door), and includes a built-in SLC loop supporting up to 240 MIX-4000 devices – eliminating the need for additional loop cards. The panel ships fully assembled with the mainboard, power supply, display, backbox, and enclosure included, so there's no need to source or configure additional components before installation. Where voice evacuation is required, the panel can be paired with the QX-Mini system, enabling a combined fire and audio solution without introducing additional system complexity.



Request more information: www.securityinfowatch.com/55374401

Industrial Fire Alarm Signaling Solutions from Pfannenberg

Pfannenberg's fire alarm signaling solutions are designed to support performance-based coverage of audible and visual alarm systems and comply with NFPA 72 requirements for public and private mode applications. The T3 tone in Pfannenberg sounders meets the offset requirements with 10 dB for Private Mode and 15 dB for Public Mode, while the PATROL and PYRA product ranges are UL listed and fully compliant with NFPA 72 standards. Pfannenberg's sizing requirements exceed the minimum requirements in NFPA 72 performance-based alternatives, and its products integrate with BIM software and Pfannenberg's proprietary sizing and 3D coverage tools to support accurate alarm planning.



Request more information: www.securityinfowatch.com/55291838

COMMUNICATIONS

Viking Multicast Paging Server



The Viking MPS-XP Multicast Paging Server is a PoE-powered SIP paging endpoint supporting up to 100 independently configurable multicast zones with priority and QoS. Page all zones from a single SIP extension, assign dedicated extensions to individual zones, or use SIP extensions and dry-contact triggers to play prerecorded audio files. Its built-in calendar scheduler with exception-date support automates delivery of prerecorded messages to multicast zones and legacy analog paging systems, all managed through a secure web interface. MQTT and HTTP webhook integrations enable third-party system connectivity. The DTMF touch-tone zone selection feature enables users to dial a code to page specific zones. Users can also record, review, and approve pages before broadcast.

<https://vikingelectronics.com/products/mps-xp>

Request more information: www.securityinfowatch.com/55374311

DoorBird D31DKH IP Video Intercom

The DoorBird D31DKH IP video intercom is designed for multi-tenant residential and commercial buildings with up to 1,000 units. It supports surface-mount and flush-mount installations and features a 7-inch ultra-bright touch display with a horizontal physical keypad for intuitive directory navigation. The system offers multiple access methods, including RFID (13.56 MHz), Bluetooth Low Energy (BLE), and QR code access, all remotely configurable. A Full HD camera with wide-angle view and an innovative 4D motion sensor enhance security and awareness at the entrance. With remote configuration via app and web admin and a well-documented API, it integrates seamlessly with third-party access control and smart building systems.



www.doorbird.com

Request more information: www.securityinfowatch.com/55374281

Valcom V-Guardian Alert Wearable Panic Button



Valcom's V-Guardian Alert is a wearable panic button platform designed to initiate emergency communication and notification workflows across multiple systems. A single button press activates a range of responses, including multiple speakers and horns for voice broadcasts, LCD and LED displays for messaging, flashers and strobes for visual alerts, desktop notifications and mobile app push alerts. It delivers room-level accuracy for incident response and supports both audible and silent notification methods. The system integrates with its Site Manager-based platform, enabling alerts to be distributed across connected devices and systems.

www.valcom.com/vguardian

Request more information: www.securityinfowatch.com/55370641

eVolve Series Video Entry Systems from DoorKing

DoorKing's eVolve Series of Video Entry Systems deliver advanced video access control with cloud-based management and flexible connectivity options. Designed for modern multi-tenant and commercial environments, the eVolve Series supports live streaming video, a high-contrast color display, and robust visitor and credential management. These systems can manage up to 10,000 users and 40,000 entry codes, with expansion capability for up to 97 entry points using tracker expansion boards. Administrators can program, monitor, and manage the system remotely through their DKS Cloud account using the DKS Community App on any Internet-connected device.



www.doorking.com/evolve

Request more information: www.securityinfowatch.com/55374319

DATACENTER DOORS – THE LAST LINE OF DEFENSE

Essential Physical Security
Access and Egress Door Solutions



Protect People, Property and Assets

No amount of perimeter intrusion detection, video analytics, network security, data encryption, multi-factor authentication or data backup is effective unless the **exterior and interior doors** are safe and secure.

Essential door control components for datacenters include the SDC **AUTO series** of low energy swing door operators with a **built-in 1 amp+ power supply**.

They can provide power for the SDC **7700 series** of motorized latch retraction and solenoid controlled locksets that **stay latched even when unlocked**, maintaining fire door integrity.

These and other SDC electrified hardware like **exit devices, digital keypads, shear locks** and **push plates** provide **physical security for datacenters in three specific sub-layers**:

PERIMETER DOOR CONTROLS

Perimeter entrances/exits to the building



FACILITY DOOR CONTROLS

Interior entrances/exits to the facility control center



CRITICAL DOOR CONTROLS

Server rooms, storage systems, network switches, cooling systems, power generators, etc



the lock behind the system

sdsecurity.com ■ 800.413.8783

www.sdcsec.com/DatacenterSecurity



The Convincer Advanced Guard Booth from B.I.G.

Every site has unique security demands, and your guard booth should reflect that. As a fully custom provider, B.I.G. Enterprises designs and delivers guard structures tailored to exact specifications, balancing security requirements, site conditions, and architectural preferences.

Each unit is prefabricated and delivered ready for operation, complete with integrated electrical, mechanical, and interior systems. From advanced materials and energy-efficient construction to custom layouts and technology integration, every detail is engineered for real-world performance from day one.

For high-risk environments, capabilities extend even further. The Convincer is a prime example of what's possible – an advanced guard booth built for maximum protection. Featuring bullet-resistant armor and stainless-steel construction, it is engineered to safeguard personnel in the most demanding conditions.

Fully equipped with security lighting, architectural louvers, and optional electronic doors, The Convincer demonstrates how form and function come together in a single, purpose-built solution.

Whether the need is standard or highly specialized, every structure is built to perform – delivering security that's tailored, reliable, and ready when it matters most.

Get a custom solution built for your site. Visit the links below or email sales@bigbooth.com to get started.

<https://bigbooth.com>



Request more information: www.securityinfowatch.com/55374321

Reconeyez Detector Outdoor Intrusion Detection Device



The Reconeyez Detector is an outdoor intrusion detection device designed for perimeter protection in remote or infrastructure-limited environments. The unit combines passive infrared (PIR) motion detection with an integrated HD camera to capture visual evidence when activity is detected. Cloud-based AI verification analyzes events to help distinguish human activity from environmental movement, supporting more accurate alarm reporting. Designed for off-grid deployments, the Detector communicates over cellular networks and is built to operate in extreme weather conditions, with field-tested performance ranging from -40°F to +140°F. AI-driven verification is intended to reduce nuisance alarms while maintaining confidence for monitoring centers and on-site security personnel. The device features an industrial-grade, weather-resistant enclosure suitable for large outdoor areas.

Request more information: www.securityinfowatch.com/55359856

Octave's Coda Spatial Platform with 3D LiDAR



Octave's Coda Spatial platform, formerly known as HxGN dC3 LidarVision, is designed to strengthen area and perimeter protection through 3D LiDAR-based detection and analytics. The system provides real-time volumetric detection and motion tracking, enabling security teams to monitor entire spaces rather than relying solely on fence-line or boundary sensors. Digital twin visualization tools create a three-dimensional representation of protected environments, allowing operators to view and assess activity with spatial context. Coda Spatial uses AI-driven analytics to identify and classify movement within monitored areas. The platform is designed to detect potential threats with centimeter-level accuracy while reducing nuisance alarms commonly associated with traditional perimeter detection technologies.

Request more information: www.securityinfowatch.com/55359817

POWER SUPPLIES

Get a Lock on Power with LifeSafety Power

New Advanced Locking Options ensure that only those you trust can access the heart of your access control system. LifeSafety Power's high-quality power distribution and the trusted, enhanced security of HES KS Locks are now available as one complete solution. Advanced Locking Options on EK Series and REK Series enclosures provide enhanced security, which becomes especially important when power is installed in a shared space. OSDP, Wiegand, Electromechanical, and Mechanical options are available with Small Format Interchangeable Core (SFIC) mechanical override for rekeying and emergency access.

<https://LifeSafetyPower.com>

Request more information: www.securityinfowatch.com/55375146



CyberPower PFC Sinewave UPS Systems

CyberPower PFC Sinewave short-depth UPS systems provide battery backup, surge protection, and EMI/RFI noise filtering for security systems, audio/visual equipment, networking and storage devices, and sensitive electronics requiring an active PFC power source. Its PowerPanel Software provides advanced UPS controls including scheduled shutdowns, event logging, alert notifications, and more. Remote UPS monitoring and management is made possible with optional remote management cards provided by the supplier. EMI/RFI noise filtering maintains clean power for connected equipment by filtering out electromagnetic and radio frequency interference to improve picture and sound quality.

Request more information: www.securityinfowatch.com/55374415



Comnet 720W Industrial PoE Switch

Comnet's CNGE10FX2TX8MSBT industrial-grade Ethernet switch is designed for bandwidth-intensive applications. Its SFP ports support up to 2.5 Gbps for fast fiber connectivity. Advanced redundancy protocols guard against network disruptions by automatically rerouting data paths, keeping user systems online. For added security, Comnet's exclusive Port Guardian actively monitors connections and instantly locks down ports if tampering is detected, helping prevent unauthorized access. SNMP traps provide real-time alerts, giving operators complete visibility and control over their systems. The unit is made in the USA and is fully BABA, NDAA, and TAA compliant, and is backed by a limited lifetime warranty.

Request more information: www.securityinfowatch.com/55309249



10G PoE++ Injector from Intellinet

Intellinet Network Solutions' 10G PoE++ Injector (SKU 561945) lets you connect an IEEE 802.3bt/af/at-compliant wireless access point, IP phone, network camera, and more to a non-PoE LAN switch port while providing the necessary PoE power up to 100 meters (328 ft.). The 4PPoE Injector has an output power rating up to 95 watts, which is enough for even power-hungry PoE++ devices such as motorized PTZ cameras, thin clients, point-of-sale systems, lighting controllers and digital signage applications. Features include full backward-compatibility with existing IEEE 802.3af/at Power over Ethernet devices, and for full installation flexibility, you can mount the injector on the wall through four built-in fixing points on the back panel.

Request more information: www.securityinfowatch.com/55374447



VIKING



STRONG. DEPENDABLE. AMERICAN-MADE.

- Access Control
- Area of Refuge
- Door Entry
- Emergency Communication
- Enhanced Weather Protection
- Hotline Phones
- IP Solutions
- Mass Notification
- Paging Systems
- VOIP Communications



WE STAND BEHIND OUR PRODUCTS - EVERY STEP OF THE WAY!

VIKING

YOU NEED A VIKING.



715.386.8861
vikingelectronics.com



Acoem ATD Gunshot Detection Sensor



Empower your security stack with Acoem ATD, a next-generation gunshot detection solution that delivers true acoustic intelligence.

Unlike traditional systems that rely on simple volume thresholds or complex microphone meshes, Acoem ATD uses a single, edge-based sensor to provide precise, intelligence-driven protection.

At the heart of the system is our Dual-Detection Standard and a 96-Attribute Acoustic Intelligence Engine. By analyzing unique waveforms and ballistic characteristics directly at the edge, the sensor reliably detects a gunshot by recognizing the unique “fingerprint” of an acoustic event. The ATD sensor distinguishes gunfire from environmental “noise”, such as construction or fireworks, with elite precision. This edge-processing eliminates the need for expensive servers, cloud dependency, or complex network infrastructure.

When a threat is detected, the system provides immediate visual verification by instantly slewing connected PTZ cameras to the identified coordinates. This transforms acoustic data into validated evidence, giving first responders critical situational awareness in real time.

With a 500-foot coverage radius per sensor, Acoem ATD is as flexible as it is powerful. Whether used for permanent perimeters or mobile coverage at festivals and public events, the system deploys easily to match your evolving risk landscape.

Backed by 30+ years of acoustic expertise, Acoem ATD is the smart choice for protecting modern communities, critical infrastructure, and public venues.

www.acoem.com/en/products/acoustic-threat-detection/atd



Request more information: www.securityinfowatch.com/55274876

FMD Pro 2.0 Portable Security Screening Solution from ZKTeco

ZKTeco’s FMD Pro 2.0 is a portable ferrous metal detector designed to detect metallic objects carried or concealed by perpetrators. The device features a wheeled design that allows it to be moved easily between locations. It is equipped with advanced detection technology and carries an IPX5 rating for water resistance. The detector also offers up to 28 hours of operating battery power, a user-friendly interface and a five-year warranty. Intended for use across a wide range of settings including indoor event venues, outdoor event venues, schools, school sporting events, warehouse environment, high-security environments, government and commercial buildings, it is a practical option for customers seeking a mobile security screening system.



Request more information: www.securityinfowatch.com/55359110

EchoShield Radar Platform from Echodyne

EchoShield by Echodyne is positioned as a mid-range radar platform designed for drone detection and airspace awareness in security-sensitive environments. The system is engineered with low size, weight, power and cost (SWaP-C) characteristics and is intended for use in critical infrastructure protection, public safety operations and high-profile event security. EchoShield provides 3D tracking capabilities and incorporates AI-enabled classification to differentiate aerial objects. The platform is designed to integrate with broader security and situational awareness systems. According to the company, the radar is built for streamlined deployment and aims to reduce false positives in complex operational environments. The solution expands options for organizations seeking mid-range airspace monitoring capabilities within layered counter-UAS strategies.



Request more information: www.securityinfowatch.com/55359511



Blaze VMS from Hanwha Vision

Hanwha Vision has introduced BLAZE VMS, a next-generation hybrid video management system designed to simplify deployment, enhance AI-powered investigations, and support multi-site surveillance operations. Built as a fully integrated end-to-end platform, it connects with Hanwha Vision cameras and devices while combining on-premises performance with cloud-based federation and centralized user management. The hybrid architecture allows organizations to manage multiple locations efficiently while maintaining secure, centralized control. It natively supports a wide range of Hanwha Vision devices, including speakers, intercoms, thermal cameras, and Wisenet 9 cameras. The platform automatically detects connected devices and applies optimized configurations, helping installers reduce setup time and minimize manual intervention.



Request more information: www.securityinfowatch.com/55368548

CHeKT 180° Panoramic Bullet Camera

CHeKT has introduced its 180 Panoramic Bullet Camera, designed to deliver wide-area video coverage and AI-driven event detection for proactive security applications. The camera provides 180-degree coverage using dual 5MP 1/2.8-inch STARVIS CMOS sensors, producing a combined 8MP (4608x1728) image at 15 frames per second. The panoramic configuration is intended to reduce blind spots while maintaining image clarity across a broad field of view. Built-in AI analytics support human and vehicle detection to help reduce nuisance alarms. The camera operates on CHeKT’s AI Analytics Engine, enabling features such as intrusion detection, line crossing alerts, loitering detection, wrong-way movement detection and heat mapping.



Request more information: www.securityinfowatch.com/55359478

IDIS VAI Video Analytics Platform

IDIS VAI is an AI-driven video analytics platform designed to provide real-time detection and advanced search capabilities across surveillance deployments. The platform supports specialized object detection, including weapon detection, and enables security teams to analyze both live and recorded video to identify events of interest. Intelligent search tools are intended to streamline investigations and reduce the time required to locate relevant footage. IDIS VAI integrates with IDIS cameras and video management software, creating a centralized monitoring environment that supports coordinated response and improved situational awareness. The solution is positioned for use in education, retail and public-sector environments seeking to enhance threat detection and investigative workflows while leveraging existing video infrastructure.



Request more information: www.securityinfowatch.com/55359847

Axon Body Mini Connected Safety Camera

Axon has introduced Axon Body Mini, a connected body-worn safety camera designed for frontline professionals in retail, healthcare and other customer-facing settings. The device is positioned as a lightweight option within its category and is built to support real-time incident response and deterrence. Features include LED status indicators, one-touch panic activation and live streaming capabilities intended to enhance situational awareness during security events. The camera is designed to integrate into existing uniform programs and organizational policies, with an emphasis on scalability for large deployments across distributed workforces. Axon Body Mini expands the company’s portfolio of connected safety technologies aimed at supporting workplace safety and incident documentation.



Request more information: www.securityinfowatch.com/55359473

NEW CYBER AND CRITICAL INFRASTRUCTURE PROTECTION TRAINING PROGRAM

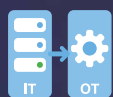
SecurityInfoWatch (SIW) is launching its new Cybersecure initiative in partnership with SecureXperts Incorporated (SXI) to address the growing need for hands-on, skillbased training for security integrators.



CSfC Packages: Requirements and solution architectures



Cryptography: NSA-approved algorithms & modules



IT/OT Security: Addressing unique convergence vulnerabilities



Multi-Site VPNs: Setup and management of secure tunnels



Risk & Compliance: Meeting federal standards and regulations

Take free assessment test and learn how to register
<http://securityinfowatch-securexperts.talentlms.com>
or email wmacrae@endeavorb2b.com

Brought to you by:



LEARN MORE

SiteOwl Physical Security Lifecycle Management Software

SiteOwl physical security lifecycle management software is a SaaS platform purpose-built for enterprise physical security teams and the integrators who serve them. It provides unified lifecycle management: design, installation, service, and asset management in a single system. No more disconnected spreadsheets, PDFs, or vendor portals. Every site, device and project equals one source of truth. It serves as a system infrastructure records. A complete, current record of every device, system, and installation across your portfolio. Know what's deployed, where, and in what state. Without chasing down integrators or digging through old project files. Built for the way enterprise security actually works. SiteOwl connects internal teams with external vendors on a shared platform, reducing errors and accelerating project delivery.

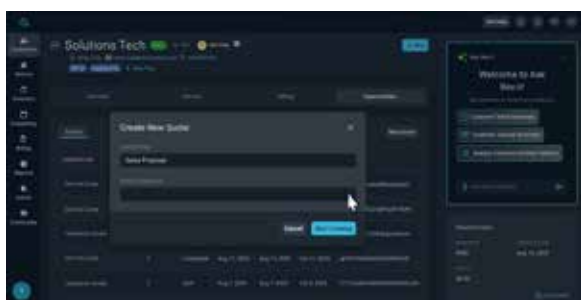


<https://getsiteowl.com>

Request more information: www.securityinfowatch.com/21257830

Rev.io Cloud-Based Business Management Software

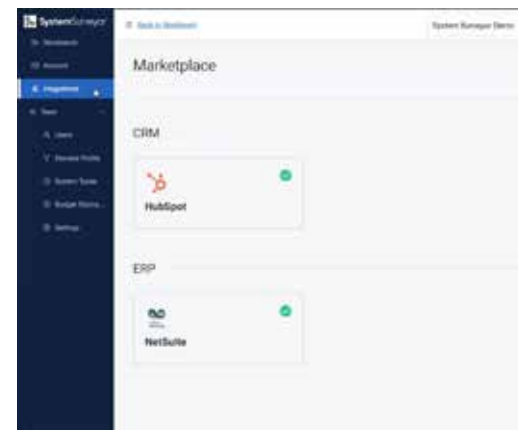
Rev.io business management software integrates native communication billing, professional service automation (PSA), and payment processing to deliver a comprehensive, all-in-one platform for telecommunications, technology, and other service-based business providers to increase operational efficiency, accelerate revenue, and ensure customer satisfaction at every touchpoint. The cloud-based software enables security providers to efficiently manage customers, automate ticketing and schedule service, track inventory, rate and bill for usage-based and recurring charges, ensure compliant taxation, process payments, generate detailed reports, and analyze dynamic data from a single platform.



Request more information: www.securityinfowatch.com/55374455

System Surveyor Enables NetSuite and HubSpot Integrations

The System Surveyor Integration Marketplace and System Surveyor Connectors enable integrations with business software applications used by security and technology integrators. The new marketplace and connectors allow end-users and integrators to link System Surveyor's site survey and system design platform with ERP, CRM, estimation and project management systems to reduce dual data entry, synchronize critical data fields and streamline workflows across the project lifecycle. Initial integrations available at launch include the System Surveyor Connector for Oracle NetSuite and the System Surveyor Connector for HubSpot, with additional integrations planned.



Request more information: www.securityinfowatch.com/55359320

Sharlic Service Delivery Management Platform

A new software solution, Sharlic, has launched as a Service Delivery Management platform designed to make recurring revenue more manageable in the security channel. Sharlic offers distributors and integrators a single hub where every supplier, license and subscription is centralized, normalized, automated and connected to the right customer. The platform replaces multiple supplier portals, complex supplier invoices and large spreadsheets used to track license renewals. For manufacturers, Sharlic functions as a channel-aware license management engine. It is designed to help sell subscriptions and services efficiently while maintaining alignment with channel partners through built-in revenue sharing capabilities. The company describes the platform as "the missing infrastructure layer between great security products and scalable recurring revenue."

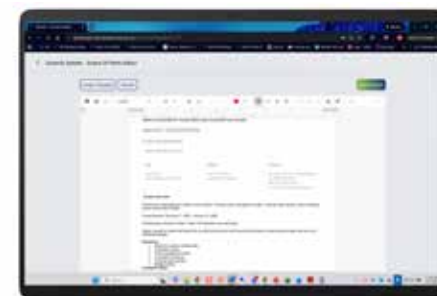


Request more information: www.securityinfowatch.com/55359624

WeSuite Selena AI Virtual Sales Assistant

WeSuite has introduced Selena AI, a virtual sales assistant integrated within its QuoteAnywhere sales management platform, a move the company says is designed to increase workflow automation and improve salesforce efficiency. According to the company, Selena AI differs from generic artificial intelligence tools by relying on each company's own sales activity, project details and historical data rather than canned assumptions and random sources. The assistant is intended to provide support throughout the lead-quote-close sales process. Current capabilities include scope-of-work creation, proposal cover letter writing and sophisticated sales data analysis that delivers actionable insights.

Request more information: www.securityinfowatch.com/55359116



WorkHorse 2.4 Alarm Business Management Software

The WorkHorse business management software platform now includes a native time-and-attendance module that enables companies to track when and where employees clock in and out, using geolocation data from each user's mobile device. It also includes multi-tenancy support, enabling organizations acquiring or managing multiple entities to operate them independently while accessing both through a single login. Finally, WorkHorse now supports Multiple Merchant Service Accounts. Alarm companies can direct recurring monthly revenue (RMR) to one bank account and all other transactions to another, offering control over how funds are distributed based on transaction type.

Request more information: www.securityinfowatch.com/55309203





The All-in-One Cloud Accounting and Operations Software for Security and Fire Installers.

Built specifically for security integrators, FieldHub manages everything from the first sales call to the closed work order: leads and proposals, projects and field service, inventory, recurring and deferred revenue, a full general ledger, and a mobile app for your techs.

fieldhub.com
info@fieldhub.com

Schedule a Demo Now



THE INDUSTRY'S FIRST 1/2" SURFACE MOUNT RIM STRIKE WITH PRELOAD



THE AWARD-WINNING 1299 SERIES

Camden Door Controls has introduced a 1/2" version of our award-winning surface mount RIM strike with preload. The **1299 Series** Grade 1 strike offers a 'Universal' design that delivers superior performance under the most demanding conditions.

The patented design of **1299 Series** RIM strikes will release with up to 15 lbs of preload pressure, caused by differences in air pressure, inexact installation, or misaligned doors (during or after installation).

- » UL 1034 & 294 Security Listings, ANSI/BHMA A156.31
- » 12/24V, AC/DC, Fail Safe/Fail Secure
- » Latch monitor included
- » 1/4" and 1/8" spacer plates included, to accommodate up to 3/4" Latch Projection
- » Metal Marking Jig Included
- » Exclusive 5 Year, No-Hassle Product Warranty

Visit us online at www.camdencontrols.com



CX-EPD1299L



CX-EPD1299L-BK



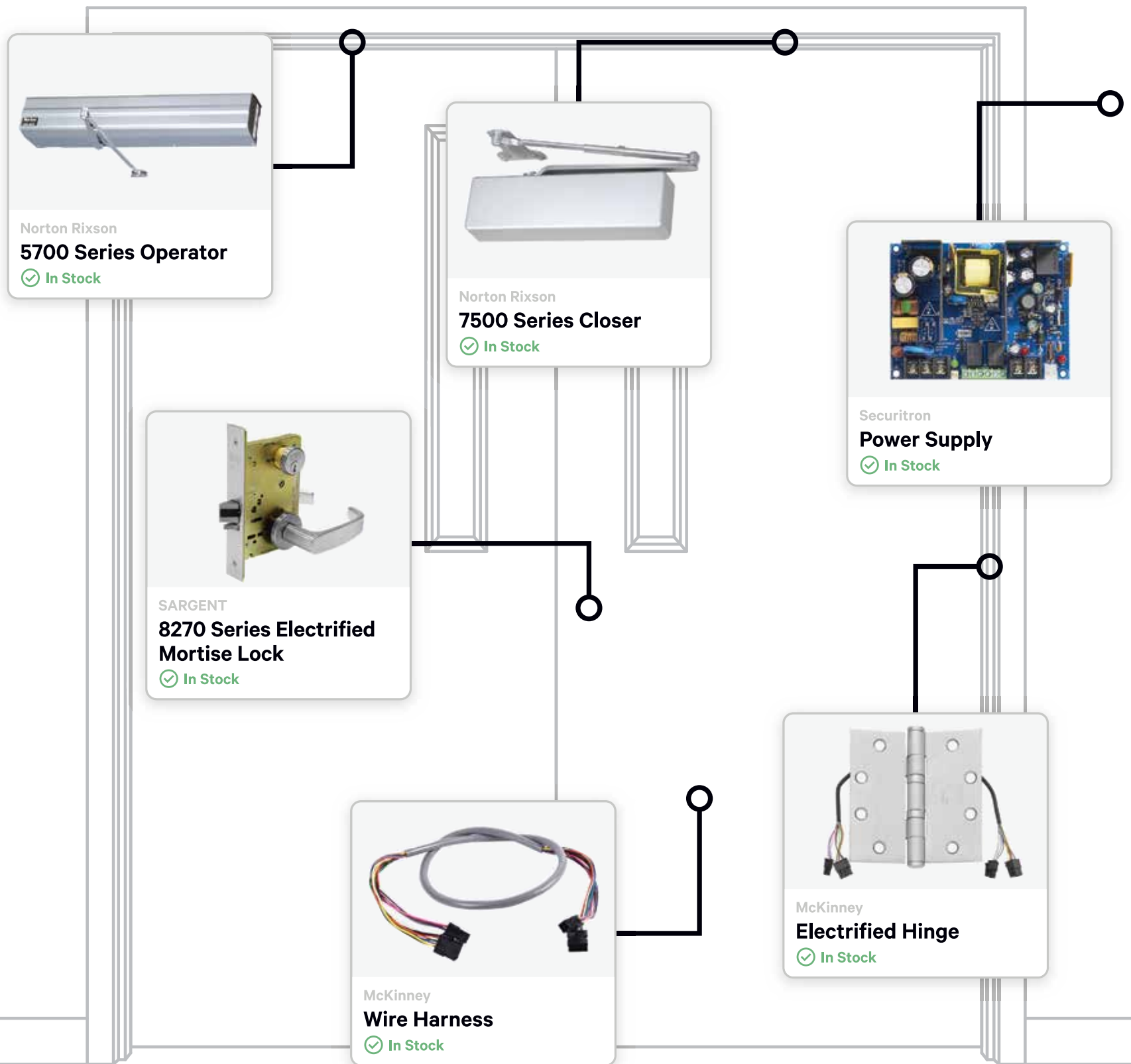
Scan this QR code for more information, including spec sheets, manuals, cross reference guides, and more!



LOCKING | **CONTROL** | **ACTIVATION** | **ACCESS**

www.camdencontrols.com | info@camdencontrols.com | US: 1-877-726-3367 | CAN: 1-877-226-3369





THE Source for Access Control and Security Hardware.

SECLOCK is the destination for all door hardware. Discover an extensive in-stock inventory from all leading manufacturers, work with our team of technical experts, and experience same-day shipping for any item you need.

SECLOCK is THE logical choice.

McKinney
ASSA ABLOY

SARGENT
ASSA ABLOY

NORTON
RIXSON
ASSA ABLOY

SECURITRON
ASSA ABLOY