

BIGBOOK

SECURITY
BUSINESS

SECURITY
EXECUTIVE

LOCKSMITH LEDGER
International

THE SECURITY INDUSTRY'S PRODUCT GUIDE • WINTER 2025

MVP Cloud Unified Access Ecosystem Integrating Napco Software & Hardware

NAPCO's MVP Cloud Platform gives security dealers and locksmiths the power of a true all-in-one access solution.

Available in on-premises, hybrid, or mobile-first app-only versions, it connects every element of access control into one seamless, easy-to-manage ecosystem. From MVP-Ready Access Panels covering 1-16 doors to Trilogy Network Electronic Locks and Marks Wireless Deadbolt Series, every product is natively integrated, engineered to install faster, configure easier, and deliver a consistent, professional-grade experience.

With MVP Cloud, system management, credential updates, and service expansion are just a tap away – whether from a phone, tablet, or desktop.

Users can mix Bluetooth, mobile, or MIFARE high-security credentials effortlessly while dealers gain new subscription-based RMR opportunities per door.

MVP Cloud delivers the intuitive simplicity today's customers expect with the profitability, flexibility and reliability professionals demand – a complete access control platform from curb to cloud.

For more information, visit the links below, contact your Alarm Lock, Continental, or Marks USA representative, or call 1.800.645.9445.



<https://napcoaccesspro.com/cloud-based-access-control>

Request more information: www.securityinfowatch.com/55238090



B150: Dual Voltage with Intelligence from LifeSafety Power

Turn single-voltage power systems into dual-voltage with remote management with LifeSafety Power's B150 Intelligent Step-Down Converter. Its intelligent design, remote management capabilities, and features make it a dependable choice for integrators seeking a flexible and efficient power conversion solution.

The B150 offers two output configurations: a fixed 12VDC output and a field-adjustable output ranging from 3 to 18VDC, both capable of delivering up to 6 amps of current. The LED display visually reports output voltage, current, and input power without additional tools. When installed with NetLink, power output and information on the LED display can also be remotely monitored, managed, and controlled.

Advanced protection features such as overcurrent, overvoltage, and thermal shut-down safeguards enhance system reliability and prevent potential damage to both the converter and connected components. The B150's compact design and cost-effective power conversion make it suitable for integration into space-constrained environments that require dual voltage systems. This Intelligent Step-Down Converter is uniquely equipped to support card readers, access control panels, video intercoms, CCTV cameras, IT modems/routers, low-voltage lighting, USB-powered equipment, and other electronics in commercial sectors.

www.lifesafetypower.com



2025 SIW SECURITY
INFOWATCH.COM®
READERS' CHOICE
AWARDS™
★ TOP PRODUCT ★



Request more information: www.securityinfowatch.com/55270192

Acoem ATD-300 Gun Detection Sensor

Acoem's ATD (Acoustic Threat Detection) System, recognized with an Honorable Mention in the Readers' Choice Awards, is redefining physical security by making advanced gunshot detection an affordable, practical addition to any security portfolio.

This single-sensor solution provides immediate, precise location alerts and instantly slews PTZ cameras toward the threat. This gives security teams real-time visual confirmation as a situation unfolds, boosting first responder situational awareness and capturing critical evidence.

Edge processing allows ATD sensors to be deployed anywhere, from fixed perimeters to temporary coverage zones on mobile trailers, and eliminates the need for remote servers or multi-sensor triangulation complexity. A single sensor covers a massive 500-foot radius – equal to 10 football fields – dramatically reducing deployment cost and complexity.

The technical foundation is Acoem's powerful edge-based AI neural network engineered to reject false positives like fireworks, car backfires, or construction noise.

The Acoem ATD-300 sensor just received its most advanced neural net update yet. Built on one of the world's largest acoustic libraries, the ATD AI engine is continually updated by Acoem's engineering team to ensure unmatched accuracy in complex environments. Acoem ATD answers security demands for both greater accuracy and greater deployment flexibility. Learn more and schedule a demo today!

<https://acoemATD.com>



Request more information: www.securityinfowatch.com/55274876



Camden's Universal RIM Strikes with Preload

Camden has introduced a new ½-inch version of its award-winning surface mount RIM strike with preload.

The new CX-EPD1299L Universal series RIM strike doesn't compromise on performance and will operate where other strikes fail. The patented low-profile design enables it to operate with up to 15lbs of preload pressure, preventing the most common cause of strike failure caused by differences in air pressure common in stairwell doors.

Camden's 1299L series strikes also include 1/8" and ¼" spacer plates to accommodate up to ¾" latch projections.

Also available is the sleek CX-EPD1289L Universal series that delivers unsurpassed application flexibility and includes UL security and Grade 1 fire rating. Installation is quick and easy, as a convenient metal mounting jig is also included.

Both strikes feature field configured latch monitoring, selectable fail-safe, fail-secure operation, non-handed left or right, and dual voltage, so there's no need to stock a range of RIM strike models. Both are available in heavy-duty stainless-steel or sleek black finish and are backed by Camden's exclusive no-hassle five-year warranty.

For more information please visit the links below.

[www.camdencontrols.com/
products/CX_EPD1299L](http://www.camdencontrols.com/products/CX_EPD1299L)



Request more information: www.securityinfowatch.com/55331719



CAMDEN IS ELECTRIC STRIKES



CX-EPD1289L

3/4" Preload
RIM, 3hr Fire,
Latch Monitor



CX-EPD1299L

1/2" Preload
RIM, Latch
Monitor

Trust Camden for Electric Strike Solutions!

Camden is continuing its 37-year history of offering the most innovative locking products in the industry. With features like Universal design, preload, latch monitoring, and full compliance with UL Security and ANSI Fire Rating Standards - Camden provides industry-leading product selection, features, warranty, and value.



CX-ED1959-MB

Outdoor Rated
Gate Strike with
Weld Box



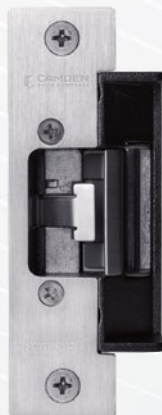
CX-ED1689L-4

Low Profile
Universal,
3hr Fire,
Latch Monitor



CX-ED1799L-8

Universal,
3hr Fire, Latch +
Bolt + Keeper
Monitor



CX-ED1079L

Universal,
3 Face Plate,
Grade 1



CX-ED2079

Universal,
3 Face Plate,
Grade 2



CX-ED1579L

Universal,
3hr Fire,
Bolt Monitor



CX-ED1410

90 min Fire,
ANSI Electric Strike



LOCKING | **CONTROL** | **ACTIVATION** | **ACCESS**

www.camdencontrols.com | info@camdencontrols.com | CAN: 1-877-226-3369 | USA: 1-833-726-3367

BIGGER INVENTORY SAME DAY SHIPPING

**AMERICA'S MOST TRUSTED DOOR HARDWARE
DISTRIBUTOR SINCE 1975.**

Now with more inventory than ever, you can get the trusted Locknetics products you rely on, faster. Count on Top Notch to supply dependable electronic access control solutions. Shop our expanded inventory of:

- ✓ **Electric Strikes:** CS Series low profile cylindrical electric strikes are designed for metal and wood door frames.
- ✓ **Door Cords:** Protect your electrical wires with door loops, now stocked in a variety of lengths to meet your project specs.
- ✓ **Accessories:** From touchless wave switches to illuminated pushbuttons, Top Notch stocks the right electronic access control accessories to complete your job on time and on budget.

LOCKNETICS®

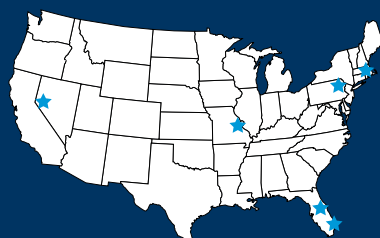


**SECURE YOUR JOBS WITH CONFIDENCE. GET SAME DAY SHIPPING OF IN STOCK PRODUCTS.
ACCURACY GUARANTEED. ORDER TODAY!**



TOP NOTCH™ DISTRIBUTORS

🖥️ **TOPNOTCHINC.COM**
☎️ **800-233-4210**
✉️ **SALES@TOPNOTCHINC.COM**



**NATIONWIDE
DISTRIBUTION CENTERS**
FL • MA • MO • NV • PA

BIGBOOK

THE SECURITY INDUSTRY'S PRODUCT GUIDE



TABLE OF CONTENTS

B6 2025 **SIW** SECURITY
READERS' CHOICE
AWARDS™
INFOWATCH.COM®



B20 Access Control & Door Hardware



B24 Smart Home



B26 Power Supplies



B26 Key Control



B28 Threat Detection



B28 Communications



B30 Video Surveillance

WINTER 2025

Advertiser Name	Page
ACOEM	B13
Alarm.com	B15
Altronix Corporation	B29
Camden Door Controls	B2
Control iD	B26
Corbin Russwin Arch. Hardware	B7
Digital Monitoring Products	B9
DoorKing	B17
HID Global Corporation	B30
IDN, Inc.	B23
Inovonics Wireless Corp	B5
Mercury Security / HID	B4
NAPCO Security Technologies	B21
Salto Systems	B27
SDC-Security Door Controls	B19
SECLOCK	B32
Suprema America LLC	B11
Top Notch Distributors - East HQ	B3
Viking Electronics	B31
Wolflok	B25

This index is supplied as a service to our readers. The publisher assumes no liability for omissions or errors.

*All Showcase Products in this publication are paid advertisements, as are a limited number of regular product listings.



PUBLISHED BY

30 Burton Hills Blvd., Suite 185
Nashville, TN 37215

THE BIG BOOK

is a supplement to *Locksmith Ledger*,
Security Business and
Security Executive magazines.

EDITORIAL

Editor, *The Big Book* | Paul Rothman
(847) 454-2731
prothman@securitybusinessmag.com

Editorial Director | Steve Lasky
(847) 454-2719
steve@securityinfowatch.com

Editor, *Locksmith Ledger* | Paul Ragusa

Editor, *Security Business* | Paul Rothman

Editor, *Security Executive* | Steve Lasky

SALES

**VP/Market Leader - Public Safety, Security and
Vending Group** | Bill MacRae
(732) 804-1732; bmacrae@endeavorb2b2.com

Director of Business Development

Jolene Gulley-Bolton
(480) 524-1119; jgulley@endeavorb2b2.com

Northeast US & East Canada

Security Business, SecExec, SIW | Sarah Flanagan
(207) 319-6967; sflanagan@endeavorb2b.com

Western US & Western Canada

Security Business, SecExec, SIW | Kevin Freel
(920) 212-2241; kfreel@endeavorb2b.com

Sales, *Locksmith Ledger* | Travis Gipson
(205) 409-0843; tgipson@endeavorb2b.com

PRODUCTION

Production Manager | Jane Pothlanski
jpothlanski@endeavorb2b.com

Ad Services Manager | Deanna O'Byrne
dobyrne@endeavorb2b.com

Audience Development Manager | Delicia Poole
dpoole@endeavorb2b.com

Art Director | Kermit Mulkins

ENDEAVOR BUSINESS MEDIA, LLC

CEO | Chris Ferrell

COO | Patrick Rains

CDO | Jacquie Niemiec

CALO | Tracy Kane

CMO | Amanda Landsaw

**EVP Infrastructure
& Public Sector Group** | Kylie Hirko

**VP of Content Strategy, Infrastructure & Public Sector
Group** | Michelle Kopier

Subscription Customer Service
PO Box 3257, Northbrook, IL 60065-3257
Toll-Free 877-382-9187; Local 847-559-7598
Circ.SecDealer@omeda.com

Article Reprints

To purchase article reprints, please email
Director of Business Development, Jolene Gulley-Bolton:
jgulley@endeavorb2b.com

Printed in the USA. Copyright 2025 Endeavor Business Media, LLC.
All rights reserved. No part of this publication may be reproduced or
transmitted in any form or by any means, electronic or mechanical,
including photocopy, recordings or any information storage or retrieval
system, without permission from the publisher.

Endeavor Business Media, LLC does not assume and hereby disclaims
any liability to any person or company for any loss or damage caused
by errors or omissions in the material herein, regardless of whether
such errors result from negligence, accident or any other cause
whatsoever. The views and opinions in the articles herein are not to
be taken as official expressions of the publishers, unless so stated. The
publishers do not warrant, either expressly or by implication, the factual
accuracy of the articles herein, nor do they so warrant any views or
opinions offered by the authors of said articles.

INNOVATION IS NOT A SPECTATOR SPORT

Let's revolutionize access
control, together. Are you in?

mercury-security.com



Mercury | All Aboard

Stay Connected.



Intrusion and Life Safety Wireless Solutions

are designed with one specific purpose in mind – to help ensure that your intrusion and life safety systems are always connected when you need them most.

That's why our ecosystem of wireless products continues to set new benchmarks in extended range, signal integrity, and virtually interference-free transmission.

And why Inovonics wireless systems are currently protecting many of the world's most prominent and sensitive venues.

It's the proven wireless performance and reliability you can trust to keep your systems connected.

Only from Inovonics.



inovonics.com

The SecurityInfoWatch Readers' Choice Awards program recognizes the most impactful products introduced in the physical security industry over the past year (April 2024 through June 2025) in 20 different product categories. The program is the most democratic product awards program in the industry – judged and decided by the very people who use and install these products every day. Voting was open to any SecurityInfoWatch reader (one vote per IP address) during August and September. In all, nearly 2,300 security professionals participated in the voting.

Once the vendor submission period ended, voting was opened. Simply put, the product garnering the most votes in a particular category was named the winner. Honorable mention products received the next-most votes in a category (multiple honorable mentions were chosen in the larger or closely contested categories).



Here are the winning Readers' Choice Products of 2025:

CATEGORY: Access Control Hardware

FEATURED PRODUCT

BioEntry W3 from Suprema

BioEntry W3 is an innovative facial authentication access control device powered by Suprema's advanced AI technology. Its AI processor, optimized with deep learning (NPU), ensures high accuracy and lightning-fast facial processing speeds. Designed to withstand external impacts and extreme conditions in a slim and compact profile, its template on Mobile (ToM) enables mobile access.

Request more information: www.securityinfowatch.com/55269550

2025 SIW SECURITY INFOWATCH.COM
READERS' CHOICE AWARDS
HONORABLE MENTION

acre Smart Controller

The acre Smart Controller supports two doors with Wiegand or four with OSDP, managing up to eight readers for entry and exit control. Ideal for small or expanding operations, it provides robust encryption. Pairing it with the acre Access Control platform creates a secure, cloud-native system.

Request more information: www.securityinfowatch.com/55307643



FEATURED PRODUCT

iDFace Max Facial Recognition from Control iD

With a modern design and elegant finish, iDFace Max by Control iD is ideal for monitoring and controlling the entry and exit of people using facial identification technology. Its advanced algorithm and cameras allow the identification of up to 100,000 faces (1:N) with face liveness detection and identification, with and without a mask.

Request more information: www.securityinfowatch.com/55286479

CATEGORY: Alarm Systems

2025 SIW SECURITY INFOWATCH.COM
READERS' CHOICE AWARDS
★ TOP PRODUCT ★

JamAlert from DMP

JamAlert by DMP detects cellular signal jamming, a growing problem, particularly for high-end retail businesses and financial institutions. Cellular jammers are used to defeat alarm system communications, disrupting cellular alarm signal transmission. Universally compatible with DMP and non-DMP panels, it addresses a critical security gap and offers a unique, easy-to-sell upgrade across a wide customer base.

Request more information: www.securityinfowatch.com/55270528



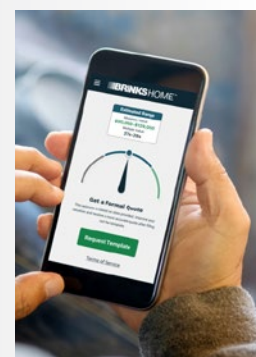
CATEGORY: Business Management Software & Solutions

2025 SIW SECURITY INFOWATCH.COM
READERS' CHOICE AWARDS
★ TOP PRODUCT ★

Brinks Home Account Value Calculator (AVC)

The Brinks Home Account Value Calculator (AVC) is an AI-powered tool that provides home security business owners with a transparent and confidential method to value their alarm account portfolios instantly, facilitating both small and large transactions while enabling rapid access to liquidity. It also offers support for divesting additional assets.

Request more information: www.securityinfowatch.com/55239087





IN100 SERIES

Security Without Complexity

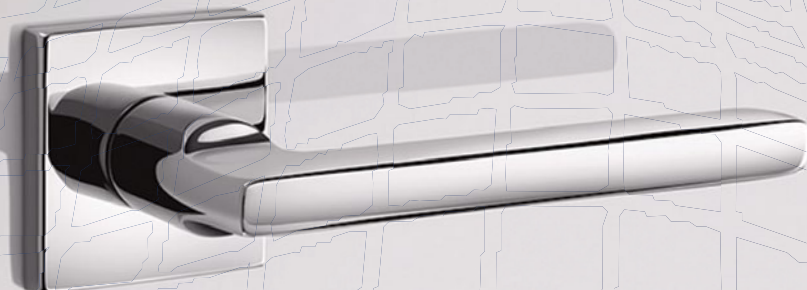
The IN100 Series with Aperio® technology combines the convenience and flexibility of wireless with the security of real-time access control. Ideal for classrooms, lecture halls, offices, and more; the IN100 Series makes expanding security smarter, faster, and more affordable.



Scan to learn more

sargentlock.com

SARGENT
ASSA ABLOY



Experience a safer
and more open world

CATEGORY: Access Control Software

2025 SIW SECURITY
INFOWATCH.COM®
READERS' CHOICE
AWARDS™
★ TOP PRODUCT ★

FEATURED
PRODUCT



Suprema BioStar Air

The cloud-based BioStar Air access control platform features true zero-on-premise architecture for SMBs, multi-branch companies, and mixed-use buildings. Smart readers with built-in controllers connect directly to the network, with native biometric support by processing biometric data at the edge. It supports a range of credentials, including facial authentication, RFID cards, mobile access, and QR codes.

Request more information: www.securityinfowatch.com/55289045

2025 SIW SECURITY
INFOWATCH.COM®
READERS' CHOICE
AWARDS™
HONORABLE MENTION

RightCrowd SmartAccess PIAM

RightCrowd SmartAccess Physical Identity and Access Management

(PIAM) technology combines the benefits of cloud native technology, AI-powered assistance, and built-in best practice modules for rapid deployment. Built on Microsoft Azure Kubernetes Services, it delivers enterprise-grade scalability, performance, and resilience without the burden of on-premises infrastructure. Featuring unlimited scalability, it dynamically adjusts to meet real-time demands.

Request more information: www.securityinfowatch.com/55134088




2025 SIW SECURITY
INFOWATCH.COM®
READERS' CHOICE
AWARDS™
HONORABLE MENTION

Mercury Security Embedded Application Environment

The Mercury embedded application environment is an open platform that enables technology partners and OEMs to develop and deploy custom applications directly on Mercury MP Controllers. Unlike traditional access controllers that rely on server-based logic and are limited in upstream system connections, the platform brings real-time logic processing to the edge, reducing latency.

Request more information: www.securityinfowatch.com/55267369



CATEGORY: Door Hardware & Locks

2025 SIW SECURITY
INFOWATCH.COM®
READERS' CHOICE
AWARDS™
★ TOP PRODUCT ★



dormakaba Quantum Pixel+

dormakaba's Quantum Pixel+ hotel electronic locking solution features a minimalist design with the entry hardware hidden in the body of the door. The easy-to-use, secure, and flexible solution supports NFC, RFID, and Bluetooth Low Energy (BLE) technology and digital wallets, so guests can access their rooms using traditional cards or mobile keys.

Request more information: www.securityinfowatch.com/55308671

2025 SIW SECURITY
INFOWATCH.COM®
READERS' CHOICE
AWARDS™
HONORABLE MENTION

FEATURED
PRODUCT



Sargent IN100 Series with Keypad

The SARGENT IN100 Series with Keypad Option brings advanced security and streamlined access control together in a single, versatile solution. Built on Aperio wireless technology, it enables facilities to expand their electronic access control systems without the cost and complexity of wiring at the door. It supports a wide range of credential types and technologies.


Request more information: www.securityinfowatch.com/55308647

2025 SIW SECURITY
INFOWATCH.COM®
READERS' CHOICE
AWARDS™
HONORABLE MENTION

Kwikset Halifax LED Lever

Kwikset's Halifax LED Lever blends cutting-edge technology with sleek, contemporary design. It features an integrated LED light that illuminates the handle when motion is detected. A built-in motion sensor activates the light when movement is detected within 10 feet. A sleek square rosette adds a contemporary touch to interiors.

Request more information: www.securityinfowatch.com/55252801



CELL JAMMERS ARE HERE.

JamAlert IS READY FOR THEM.



Tech-savvy criminals are using illegal cellular jammers to attack alarm systems, targeting high stakes locations such as jewelry stores, financial institutions and residences.

The big problem? Cell jammers have been difficult to detect — until now.

JamAlert™ is a revolutionary new device that alerts when it detects a jamming attempt, and it works with any brand of control panel.

It's a security system for your security system.

**PROTECT YOUR CUSTOMERS BY
STAYING AHEAD OF THE THREAT.**



Visit us at DMP.com/JamAlert-WB
to learn how to stay ahead of the threat.



CATEGORY: Cybersecurity Hardware & Software


2025 **SIW** SECURITY
INFOWATCH.COM®
READERS' CHOICE
AWARDS™
★ TOP PRODUCT ★

HID Global OMNIKEY SE Plug Reader

HID's OMNIKEY SE Plug Reader is an ultra-compact and cable-free RFID reader for mobile use cases. Ideal for remote workers and field workforces to securely access business systems, applications, and networks, it offers multi-device compatibility – working with laptops, tablets, and smartphones using a USB-C interface and multi-factor authentication (MFA) for enhanced security against phishing and credential theft.

Request more information: www.securityinfowatch.com/55307697

FEATURED PRODUCT



CATEGORY: Emergency Communications & Mass Notification

2025 **SIW** SECURITY
INFOWATCH.COM®
READERS' CHOICE
AWARDS™
★ TOP PRODUCT ★



AXIS C1710 Network Display Speakers

The AXIS C1710 Network Display Speaker is suited for general public address as well as urgent messaging. Built on open standards, it integrates with third-party mass notification systems for effective communication. The display and strobe are customizable, offering a variety of available colors and text animations for different scenarios.

Request more information: www.securityinfowatch.com/55296517

2025 **SIW** SECURITY
INFOWATCH.COM®
READERS' CHOICE
AWARDS™
HONORABLE MENTION



Hanwha Vision SPS-A100M Audio Beacon

Hanwha Vision's SPS-A100M Audio Beacon transforms surveillance systems into AI-powered tools for situational awareness, incident response, and deterrence. It supports two-way audio, capturing sound clips and triggering alerts without compromising personal privacy in sensitive environments. It uses AI to identify and categorize sounds such as breaking glass, screams, or extreme decibel events.

Request more information: www.securityinfowatch.com/55308693

2025 **SIW** SECURITY
INFOWATCH.COM®
READERS' CHOICE
AWARDS™
HONORABLE MENTION

AthenaVision AR Alert Glasses from Athena Security

AthenaVision AR Alert Glasses give security teams a hands-free way to stay informed and respond to threats. Connected to Athena's AI detection platform, they display real-time alerts and visual cues directly in the wearer's field of view. Designed for environments like hospitals, schools, and large venues, it improves situational awareness and team communication.

Request more information: www.securityinfowatch.com/55308688



CATEGORY: Installation Tools

2025 **SIW** SECURITY
INFOWATCH.COM®
READERS' CHOICE
AWARDS™
★ TOP PRODUCT ★

FEATURED PRODUCT



LifeSafety Power ProWire LED Light Kit

LifeSafety Power's ProWire LED Light Kits are magnetic, LED light strips that come with the company's E6, E8, and E12 products to bring instant illumination to enclosures to assist with installing, managing, and servicing in dark or remote environments, like IT closets, compact data centers, or other locations where space and light are at a minimum.

Request more information: www.securityinfowatch.com/55139424

2025 **SIW** SECURITY
INFOWATCH.COM®
READERS' CHOICE
AWARDS™
HONORABLE MENTION

OSDP Cable Test Tool from Cypress Integration Solutions

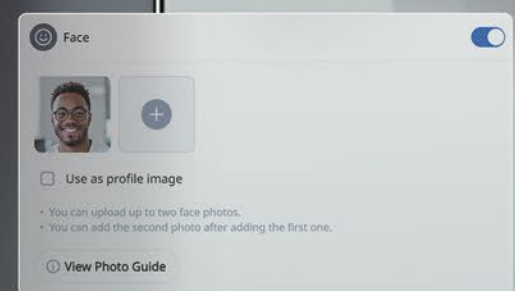
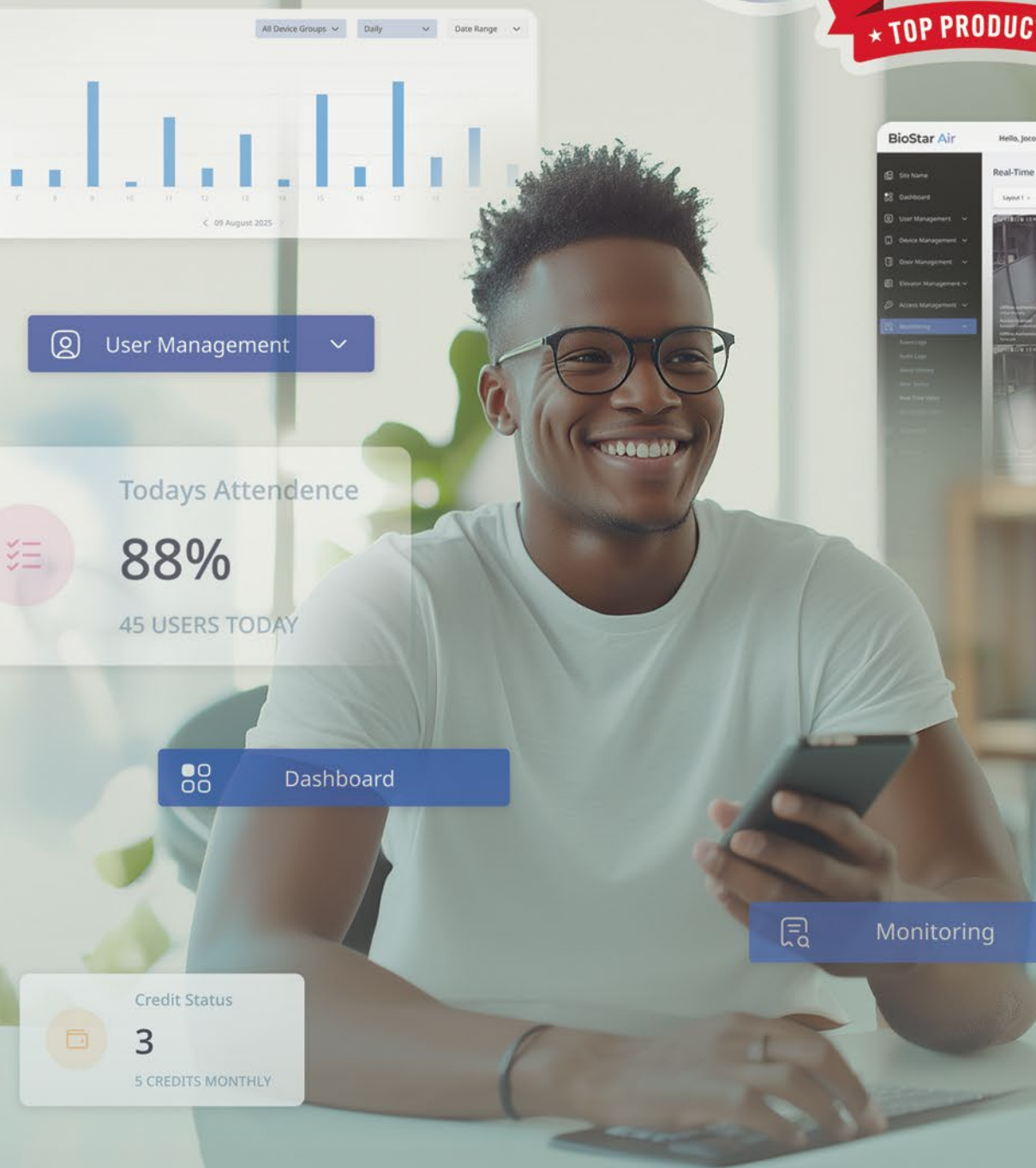
The OSDP Cable Test Tool (OTT-2100-2) from Cypress Integration Solutions determines if OSDP will work on a cable. The tool, which consists of a pair of compact units that connect to the reader cabling, enables integrators to verify that the cable they just pulled was installed correctly or check if it supports OSDP.

Request more information: www.securityinfowatch.com/55291845



Zero on-prem. Biometrics on cloud.

BioStar Air x BioEntry W3



No controllers. No servers. No limits.

BioStar Air connects Suprema's biometric readers straight to the cloud with a single cable.

Suprema
SECURITY & BIOMETRICS

Suprema America

250 International Parkway, Suite 134 Lake Mary, Florida 32746

T 800 490 6971 **E** sales_na@supremainc.com **W** www.supremainc.com

CATEGORY: Fire & Life Safety



Johnson Controls Simplex Incident Manager

Johnson Controls' Simplex Incident Manager is a web-based fire alarm management workstation for campuses and large facilities. It allows users to control and supervise up to 687 fire alarm control units and 250,000 devices from any HTML-5-capable device. A centralized dashboard and a color-coded building map help teams act when incidents occur.

Request more information: www.securityinfowatch.com/55298163



CATEGORY: Intercoms & Visitor Management



Aiphone IX / IXG Series IP Video Intercom

Aiphone's IX | IXG Series combines its IX Series commercial video intercom with the capabilities of its IXG Series multi-tenant video intercom. The firmware update consolidates the products into a single, unified solution for commercial, multi-tenant, and mixed-use properties. It includes ADA-compliant rescue assistance towers, wall boxes, intercoms, commercial access entry systems, and multi-family dwelling products.

Request more information: www.securityinfowatch.com/55309230



Zenitel ZDD-1 Display Door Intercom

The Zenitel Display Door intercom (ZDD-1) features a speaker and microphone array to deliver an immersive sound experience, while high sound pressure levels make it ideal for high-noise environments. The bi-directional video communication enables face-to-face interaction, and it features an intuitive touch display with an easy-to-use UI/UX.

Request more information: www.securityinfowatch.com/55284539



Salto XS4 Com Smart Door Intercom

The Salto XS4 Com is a cloud-based door intercom solution that integrates video intercom capabilities with advanced access control technology. The hardware-free solution leverages the user's own smartphone in combination with QR code and NFC technology to provide visitor access without complex installations or wiring. Remote door unlocking capabilities are included.

Request more information: www.securityinfowatch.com/55264893

CATEGORY: IT Networking & Cabling Products



TRENDnet PoE++ Switch

TRENDnet's 9-Port 2.5G GaN Power PoE++ Switch with 10G SFP+ Port (TPE-BG5091) features gallium-nitride (GaN) technology to deliver power with increased efficiency and a smaller carbon footprint. It delivers up to 95 watts of PoE power per port for power-hungry PoE devices, such as security cameras, high-power access points, digital signage, and access controls.

Request more information: www.securityinfowatch.com/55267373



Comnet 720W Industrial PoE Switch

Designed for bandwidth-intensive applications, the Comnet CNGE10FX2TX8MSBT switch's SFP ports support up to 2.5 Gbps for fast fiber connectivity. Advanced redundancy protocols guard against network disruptions by automatically rerouting data paths, keeping user systems online. For added security, Comnet's exclusive Port Guardian actively monitors connections and instantly locks down ports if tampering is detected.

Request more information: www.securityinfowatch.com/55309249





Modern gunshot detection; a security essential.

Acoem's ATD (Acoustic Threat Detection) system is key to implementing a modern, layered physical security strategy with immediate threat confirmation.

The single-sensor, edge-based design provides immediate location alerts and instantly slews PTZ cameras for real-time visual confirmation.

Edge processing enables decentralized intelligence and flexible deployment across all environments. A single sensor covers a 500-foot radius (10+ football fields), reducing deployment cost and complexity.

Instant Visual Confirmation

Automated slewing of PTZ cameras upon alert for immediate visual data, boosting first responder situational awareness.

Decentralized Intelligence

Edge processing eliminates the need for multi-sensor triangulation, servers or complex infrastructure.

Widespread Coverage

One sensor covers a 500-foot radius (10+ football fields), minimizing hardware and deployment costs.

Flexible Deployment

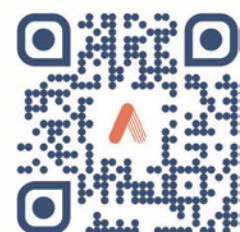
Portable, Edge processing and scalability allows us to deploy on portable trailers, or temporary applications to ensure coverage, when and where you need it.

**Real-time threat awareness.
Where you need it.**



2025 **SIW** SECURITY
INFOWATCH.COM®
READERS' CHOICE
AWARDS™
HONORABLE MENTION

Request a demo now.
acoematd.com



CATEGORY: Monitoring Solutions

2025 SIW SECURITY
INFOWATCH.COM®
READERS' CHOICE
AWARDS™
★ TOP PRODUCT ★



Sentinel Alarm Monitoring from Monitor Computer Systems

Monitor Computer Systems' Sentinel offers advanced alarm monitoring compliant with stringent standards like BS 50136 and EN 50518. Designed for engineers, security guards, premises owners, and regional managers, it provides an intuitive interface for comprehensive system management. Users can run fire tests, check alarm status, view signaling history, and access live video feeds.

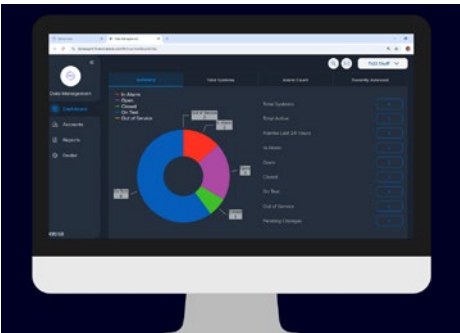
Request more information: www.securityinfowatch.com/55269589

NexusCorp Alarm Monitoring Software from NMC

NMC's NexusCorp platform empowers integrators to manage complex, multi-location commercial accounts from a single dashboard, including monitoring for alarm activity and testing systems, monitoring dispatches, and identification of unrestored zones. It includes a zone testing chart, which significantly improves the efficiency of testing fire systems and bank robbery alarms.

Request more information: www.securityinfowatch.com/55309270

2025 SIW SECURITY
INFOWATCH.COM®
READERS' CHOICE
AWARDS™
HONORABLE MENTION



CATEGORY: Power Supplies

2025 SIW SECURITY
INFOWATCH.COM®
READERS' CHOICE
AWARDS™
★ TOP PRODUCT ★



LifeSafety Power B150 Intelligent Step-Down Converter

LifeSafety Power's B150 Intelligent Step-Down Converter provides economical remote power management, monitoring, and control of enterprise power solutions. Its dual-voltage conversion modules offer an additional voltage range between 3-18VDC at 6 amps maximum current. NetLink managed power technology provides notifications of power faults or voltage drops and can also enable remote power cycling and programming.

Request more information: www.securityinfowatch.com/55270192

CATEGORY: Sensors

2025 SIW SECURITY
INFOWATCH.COM®
READERS' CHOICE
AWARDS™
★ TOP PRODUCT ★




Eagle Eye Indoor Air Quality Vape Sensor

Eagle Eye Sensors detect and automatically alert when vaping, air quality changes, temperature shifts, water presence, and other environmental events occur, empowering schools and businesses to take immediate action to ensure building safety, efficiency, regulatory compliance, and healthy work and learning environments. The sensors are integrated into the Eagle Eye Cloud VMS.

Request more information: www.securityinfowatch.com/55277097

CATEGORY: Smart Home

2025 SIW SECURITY
INFOWATCH.COM®
READERS' CHOICE
AWARDS™
★ TOP PRODUCT ★

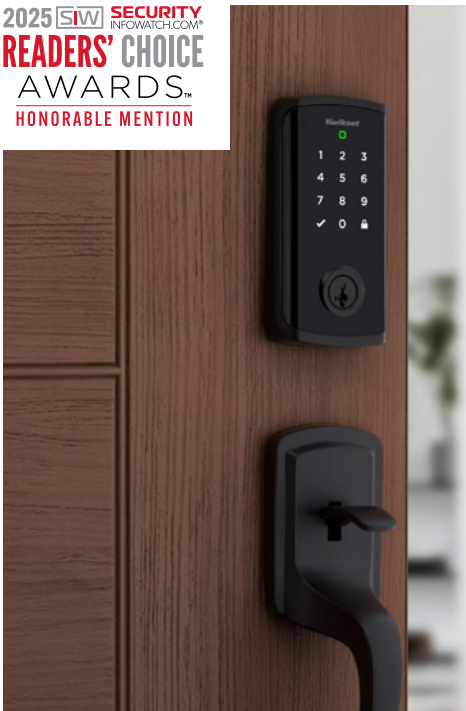


Alarm.com ADC-T25 Smart Thermostat

Alarm.com's ADC-T25 smart thermostat is compatible with most common HVAC systems, offering easy installation, a streamlined design, and advanced sensing capabilities. Fully integrated into the Alarm.com platform, it features flexible wiring options that allow it to operate on battery power if no C-wire is present, eliminating wire runs or a retrofit kit.

Request more information: www.securityinfowatch.com/55304892

2025 SIW SECURITY
INFOWATCH.COM®
READERS' CHOICE
AWARDS™
HONORABLE MENTION



Kwikset Halo Select Smart Lock

Kwikset Halo Select is a smart door lock offering both Wi-Fi and Matter built in for homeowners to control their front door from anywhere, enabling lock, unlock, and even granting access to guests, all without traditional keys. The lock also integrates geofence technology to intelligently unlock as the user approaches the home.

Request more information: www.securityinfowatch.com/55262071

"It saved
everything
that day."

Ryan | Lexington, KY



ALARM.COM[®]

Serious Security



See Ryan's
story here

CATEGORY: Threat Detection

2025 **SIW** SECURITY
INFOWATCH.COM®
READERS' CHOICE
AWARDS™
★ TOP PRODUCT ★

SDS Perimeter Outdoor Gunshot Detection Sensor

The Shooter Detection Systems (SDS) Perimeter Outdoor Gunshot Detection Sensor uses the same dual-factor acoustic and infrared technologies found in its Indoor Gunshot Detection System. A standalone, single, or multiple outdoor sensor system with a 99.9% detection accuracy rate, alerts occur in less than 3 seconds, and can distinguish between a handgun and long gun.

Request more information:
www.securityinfowatch.com/55133862



2025 **SIW** SECURITY
INFOWATCH.COM®
READERS' CHOICE
AWARDS™
HONORABLE MENTION

Acoem ATD-300 Gun Detection Sensor

Acoem's ATD Gunshot Detection system is powered by edge-based AI and built on decades of battlefield-proven acoustic intelligence to detect and locate gunfire in under three seconds with no triangulation or server processing. Integrating with a range of VMS, the system instantly slews PTZ cameras to the threat for real-time visual confirmation.

Request more information: www.securityinfowatch.com/55274876



**FEATURED
PRODUCT**

2025 **SIW** SECURITY
INFOWATCH.COM®
READERS' CHOICE
AWARDS™
HONORABLE MENTION

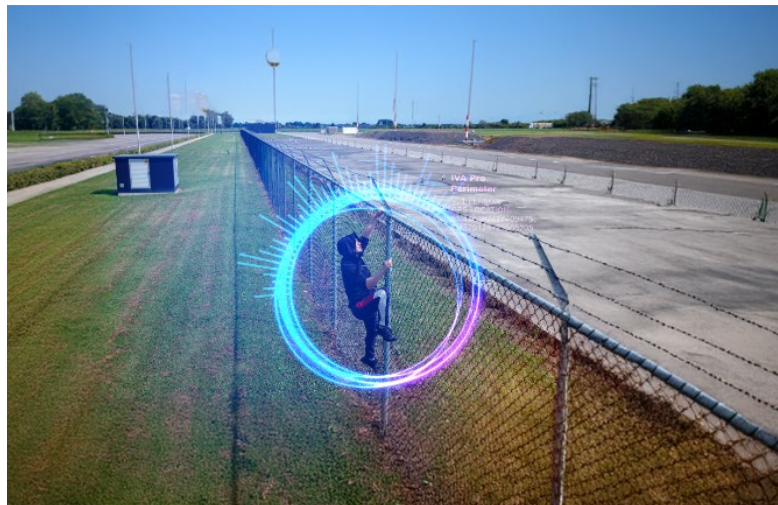
Evolv eXpedite Bag Scanning System

The Evolv eXpedite bag scanning solution is purpose-built for fast-paced, high-throughput environments to automatically detect potential threats carried in bags, using the latest advancements in AI and X-ray imaging. Able to handle more than 2,000 bags per hour, it provides an autonomous, visitor-friendly experience without the need for human intervention, while ensuring security.

Request more information: www.securityinfowatch.com/55270305



CATEGORY: Video Analytics & AI Software



2025 **SIW** SECURITY
INFOWATCH.COM®
READERS' CHOICE
AWARDS™
★ TOP PRODUCT ★

IVA Pro Perimeter from Bosch Video Systems

IVA Pro Perimeter layers multiple technologies to provide detection of intruders alongside perimeters of buildings and critical sites, at long distances and in challenging environmental and lighting conditions, including low-contrast scenes, while minimizing false positives. False positive triggers, such as dust particles, vehicle headlights, and more are ignored.

Request more information: www.securityinfowatch.com/55309346

2025 **SIW** SECURITY
INFOWATCH.COM®
READERS' CHOICE
AWARDS™
HONORABLE MENTION

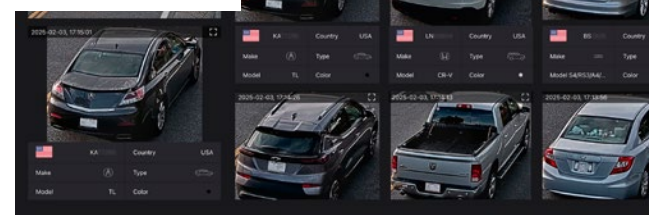


i-PRO Active Guard Intelligent Search Application

i-PRO's Active Guard intelligent search application ensures that the wealth of metadata describing the unique attributes of humans and vehicles captured by i-PRO cameras is easily delivered to popular Video Management Systems (VMS) from Milestone, Genetec, and others. This enables deep forensic search as well as real-time notifications for operators.

Request more information:
www.securityinfowatch.com/55141121

2025 **SIW** SECURITY
INFOWATCH.COM®
READERS' CHOICE
AWARDS™
HONORABLE MENTION

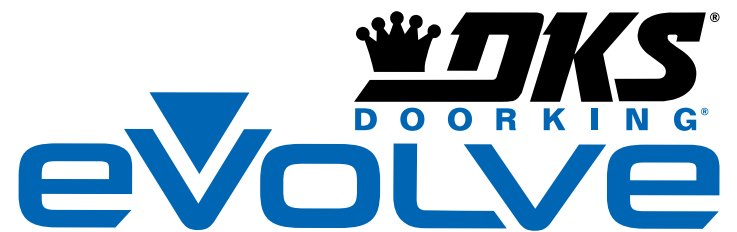


CAMMRA AI LPR solution from FF Group

CAMMRA AI brings next-level vehicle and license plate recognition (LPR) by leveraging advanced AI technology onboard a camera. Powered by five Convolutional Neural

Networks (CNNs) seamlessly embedded in Axis cameras, it delivers accuracy in any weather condition, while providing insights for traffic management, security, and more.

Request more information: www.securityinfowatch.com/55270327



THE NEXT GENERATION
OF ACCESS CONTROL

Coming 2026



NEW 2137
eVolve Video
Entry System



NEW 2170 eVolve Slide
Gate Operator

Parking and
Crash Barriers



NEW 2160 eVolve
Swing Gate
Operator

Access
Control



Member: AFA, DASMA,
NAA, IDA, NOMMA,
NPA, SIA, SSA, CANASA

Telephone
Entry

Gate
Operators

Access
Control

Traffic
Control

MADE IN USA

800-673-3299

info@doorking.com

For more information:

doorking.com/evolve

CATEGORY: Video Surveillance & Data Storage, Playback & Transmission



OpenEye OE-MB Recorder

The OE-MB is OpenEye's analog-capable hybrid appliance that supports both standard and HD analog video. Ideal for retrofits, it features 16 analog channels, additional IP camera support, and full integration with OpenEye Web Services (OWS). Supported HD formats include HD-TVI, AHD, and HD-CVI, and the units include alarm I/O and a dedicated camera NIC.

Request more information: www.securityinfowatch.com/55303416



CATEGORY: Video Surveillance Cameras



AXIS Q1809-LE Bullet Camera

AXIS Q1809-LE Bullet Camera is an all-in-one, outdoor-ready camera that delivers 41 MP images with exceptional light sensitivity. Available with a wide lens for open areas or a tele lens for surveillance from a distance, it features electronic image stabilization (EIS) to ensure smooth video in situations where the camera is subject to vibrations.

Request more information: www.securityinfowatch.com/55309369



Dallmeier Panomera S4 Perimeter Multi-Sensor Camera

Dallmeier's Panomera S4 Perimeter camera combines four sensors in one optical unit. This provides 200 effective MP per camera. Features include an AI object classification system specially trained for perimeter requirements and AI tamper detection. A neural network specially trained for perimeter protection recognizes people with unusual body postures or wearing camouflage, for example.

Request more information: www.securityinfowatch.com/55309375



OpenEye Cloud Cameras

OpenEye's cloud cameras deliver an all-in-one video solution with onboard recording and advanced analytics processing, providing the benefits of OpenEye Web Services (OWS) in a flexible serverless architecture. They allow infinite scalability with no limitations on channel count or system resources, with every camera bringing its own storage and processing power.

Request more information: www.securityinfowatch.com/53096867



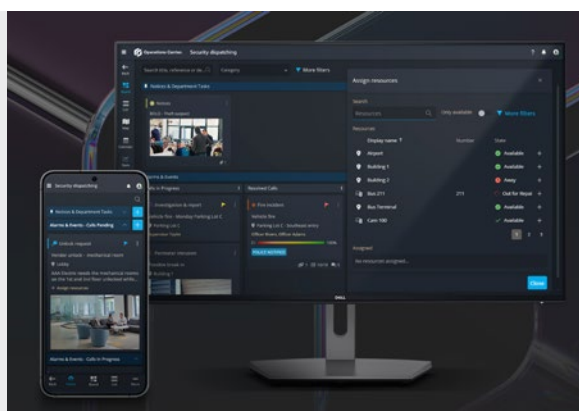
CATEGORY: VMS & Enterprise Security Management Software



Genetec Operations Center

Genetec Operations Center is a cloud-based work management solution for physical security operations. Available as part of Security Center SaaS or standalone, it addresses operational challenges faced by Security Operations teams. It guides officers in the field to their next tasks while automatically letting supervisors know about their progress, status, and location.

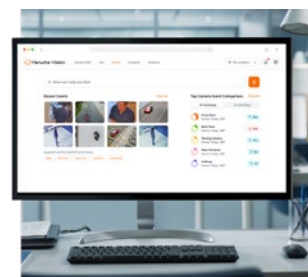
Request more information: www.securityinfowatch.com/55238131



OnCloud VSaaS from Hanwha Vision

Hanwha Vision's OnCloud is a direct-to-cloud Video Management Software as a Service (VSaaS) platform. Its non-proprietary, hardware-agnostic architecture integrates with existing infrastructures and offers recorded video, searchable clips, event notifications, and more. Users can add cameras, locations, and users through its web interface while monitoring and receiving alerts via mobile app.

Request more information: www.securityinfowatch.com/55289062



Milestone Systems XProtect 2025 R2

Milestone Systems XProtect 2025 R2 integrates access control directly onto XProtect Smart Map, enabling operators to view doors, card readers, entry gates, and turnstiles alongside cameras in a unified interface. When access-related events occur, door icons on the map automatically update, enabling immediate issue identification. Teams can also control doors directly from the map.

Request more information: www.securityinfowatch.com/55309405



SAFETY & SECURITY FOR HAZARDOUS LOCATIONS

Electromagnetic Locks and Components for Spark Prevention



Eliminate Spark and Arc Explosions

SDC's **Explosion Proof Collection** is a series of **door access & egress components** all specially designed and explosion proof rated to **National Fire Protection Association (NFPA)** standards. Additionally, these **Explosion Proof Collection** products also meet the temperature requirements of the specific application in which they are to be installed, per **National Electric Code (NEC®)** standards.

They provide **safety, security and risk management** in potentially hazardous location plants and facilities for the following industries:

- Agriculture
- Beverage
- Chemical
- Energy & Utilities
- Food Processing
- Manufacturing
- Mining
- Nuclear Power
- Oil & Gas Refining
- Pharmaceutical
- Printing

EP17624 Series Electromagnetic Locks



- Hazardous location design
- Explosion proof epoxy sealed
- Corrosion resistant

EP499 Series Mushroom Button Exit Switches



- Hazardous location design
- Impact resistant
- Corrosion proof with F1 UV protection

EP493 Emergency Release Stations



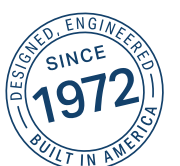
- Hazardous location design
- High strength metal die-cast alloy
- Terminal block connection



the lock behind the system

sdccsecurity.com ■ 800.413.8783

www.sdccsec.com/hazardous





ACCESS CONTROL & DOOR HARDWARE

MVP Cloud Unified Access Ecosystem Integrating Napco Software & Hardware

NAPCO's MVP Cloud Platform gives security dealers and locksmiths the power of a true all-in-one access solution.

Available in on-premises, hybrid, or mobile-first app-only versions, it connects every element of access control into one seamless, easy-to-manage ecosystem. From MVP-Ready Access Panels covering 1-16 doors to Trilogy Network Electronic Locks and Marks Wireless Deadbolt Series, every product is natively integrated, engineered to install faster, configure easier, and deliver a consistent, professional-grade experience.

With MVP Cloud, system management, credential updates, and service expansion are just a tap away – whether from a phone, tablet, or desktop.

Users can mix Bluetooth, mobile, or MIFARE high-security credentials effortlessly while dealers gain new subscription-based RMR opportunities per door.

MVP Cloud delivers the intuitive simplicity today's customers expect with the profitability, flexibility and reliability professionals demand – a complete access control platform from curb to cloud.

For more information, visit the links below, contact your Alarm Lock, Continental, or Marks USA representative, or call 1.800.645.9445.



<https://napcoaccesspro.com/cloud-based-access-control>



Request more information: www.securityinfowatch.com/55238090

IN100 Series Wireless Locks with Keypad from SARGENT and Corbin Russwin

The IN100 Series real-time wireless locks with Aperio technology from ASSA ABLOY brands SARGENT and Corbin Russwin deliver a flexible, reliable solution for extending access control deeper into any facility. Utilizing local wireless communication between each lock and a hub, it leverages existing access control and IT infrastructure to eliminate the cost and disruption of wiring at the door – providing a streamlined path to comprehensive security vs. traditional wired access control systems.

2025 **SIW** SECURITY INFOWATCH.COM
READERS' CHOICE
AWARDS.
HONORABLE MENTION

With real-time communication and remote control capabilities, openings can be locked or unlocked in under 10 seconds. A built-in privacy button enables local lockdowns, while HID OMNIKEY SE technology supports multiple credential types – including mobile. A keypad option allows for multi-factor authentication using PIN codes for added protection.

The IN100 features Smart Credential Cache technology, allowing previously authorized credentials to maintain access during network outages. Designed for durability and versatility, the locks integrate with ANSI/BHMA Grade 1 mechanical hardware and are available in cylindrical lock, mortise lock, multi-point lock, and exit device configurations – combining strength and reliability with modern convenience.

www.sargentlock.com/en/standalone/IN100-Series-Aperio-Real-Time-Wireless-Locks

www.corbinrusswin.com/en/standalone/IN100-Series-AperioReal-Time-Wireless-Locks



Request more information: www.securityinfowatch.com/55308647

BioEntry W3 Facial Authentication Device from Suprema

Suprema's BioEntry W3 is an innovative facial authentication access control device powered by Suprema's advanced AI technology. Its slim mullion-style form factor delivers strong authentication performance and durability for both indoor and outdoor use.

Its deep learning-optimized Neural Processing Unit (NPU) enables fast, accurate face matching in approximately 0.2 seconds at the edge, reducing latency and removing dependence on network connectivity.

The device is engineered for challenging environments, offering IK08 impact resistance to withstand physical force and IP67 protection against water and dust.



This combination of rugged construction and edge processing makes the BioEntry W3 well-suited for high-traffic, high-security locations.

BioEntry W3 addresses data privacy concerns in biometric devices with its innovative security feature. Template on Mobile (ToM) lets users authenticate access through their mobile devices, ensuring

that facial templates are never stored on any external systems.

The device holds key certifications, including ISO/IEC 27001, ISO/IEC 27701, which confirm its top-tier data protection.

www.supremainc.com/en/main.asp



2025 **SIW** SECURITY INFOWATCH.COM
READERS' CHOICE
AWARDS.
★ TOP PRODUCT ★

Request more information: www.securityinfowatch.com/55269550

2112 eVolve Video Telephone Entry System from DoorKing

The 2112 eVolve is DoorKing's most advanced and versatile residential video entry system, allowing users to program and control their system from virtually anywhere.

The 2112 control dashboard is browser-based, so all that's needed is an internet connection and a laptop, tablet, or smartphone to access the system settings.

With the DKS 2112 resident app (required for video calling), the system can be controlled right from a smartphone, enabling users to grant entry to guests even from thousands of miles away.

The 2112 features broadcast calling, which allows up to four phones to ring simultaneously when the call button is pushed. The 2112 can control up to three entry points and operates with either an internet (VoIP) or cellular connection.

www.doorking.com/entry-system/2112-evolve-video-entry



Request more information: www.securityinfowatch.com/21125136



ACCESS CONTROL & DOOR HARDWARE



Securitron: Standard Solutions for Non-Standard Openings

Securing non-traditional openings comes with unique demands. Securitron's solutions for specialty applications meet those challenges with the strength, reliability, and seamless integration trusted to secure even the most unconventional spaces. From securing gates and roll-up doors to sliding entries and cabinets, Securitron delivers the strength and flexibility to protect unconventional openings. Whether you're working on a retrofit or a new install, our maglocks, cabinet locks, and gate locks are built to perform, easy to adapt, and backed by our trusted MagnaCare lifetime warranty. When the application is anything but ordinary, trust Securitron to help you get it done right. Visit the links below to learn more or follow Securitron on LinkedIn and Facebook.



www.securitron.com

Request more information: www.securityinfowatch.com/10214963

TSL Multi-Technology Reader from ICT

Engineered for today's evolving security needs, the TSL Multi-Technology Reader combines convenience, performance, and durability in one sleek design. Whether securing a high-rise residence, corporate office, or healthcare facility, there's a TSL model built to fit your environment. This next-generation reader offers effortless installation, customizable aesthetics, dynamic visual feedback, flexible credential support, and future-proof reliability with over-the-network firmware updates. Designed to deliver both powerful protection and modern style. Learn more at the links below.

www.ict.co

Request more information:

www.securityinfowatch.com/55267081



Adams Rite: The Trusted Fit for Aluminum & Glass Openings

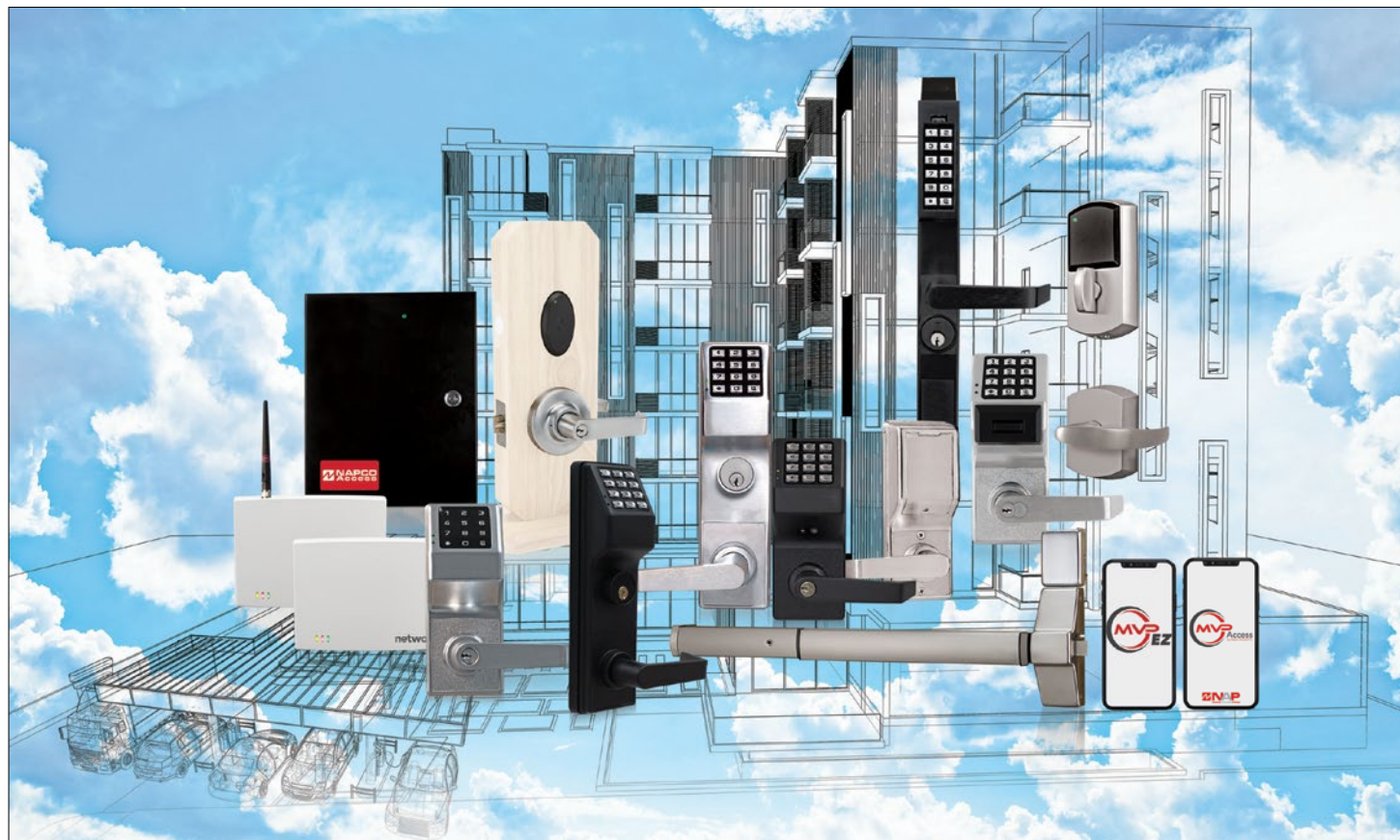
Adams Rite is the Aluminum Hardware Authority, specializing in door and door hardware solutions for narrow stile aluminum applications. From electromechanical deadlocks and deadlatches to preload capable electric strikes, and electrified exit devices and trim, Adams Rite offers practical and quality code-compliant solutions for retrofitting and upgrading interior and exterior aluminum and glass openings, adding access control to improve the safety and security of your business. Our products are available in multiple finish options to match almost any frame creating a sleek, aesthetic look. Follow Adams Rite on Facebook, LinkedIn, and Twitter or visit the links below.

www.adamsrite.com/solutions

Request more information:

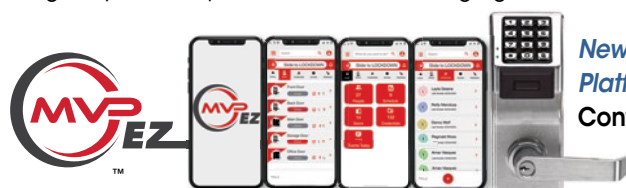
www.securityinfowatch.com/10212663

www.LocksmithLedger.com



From the Curb to the Cloud: Integrated Access Solutions from a Single Source

- **Control a Few Doors to Many - Using Unified Software, Locks & Panels, All Built & Integrated by Napco -** Start as simply as using top-rated, low maintenance Trilogy or wireless networked Trilogy PIN/Prox Networkx locks on any door- Now All Weatherproof. Then scale from there- Any number of doors, users & credential tech - ALL on choice of numerous platforms, standalone, cloud or App.
- **Every door, everywhere- Trilogy & Trilogy Networkx Networked & Designer ArchiTech** cylindrical, mortise, exit & narrow-stile locks, are available for every door & application integrated with advanced Napco Controllers & supporting multiple credentials: Mobile, NFC, BLE, MiFare, Prox, iClass.
- **Know one, know all. Less to Train/Learn, Trilogy & wireless networked Networkx models feature common familiar operation, programming, & footprint** (most) for every door, user, building & application inside & out - *Easy upgrades- No costly "rip-out & replacements"*
- **More Savings from Operating Expenses:** Trilogy is award-winning for its long-battery life, low-maintenance & lowering operational costs + wireless Networkx eliminates door-to-door labor for audits & program updates.
- **More Remote Account Management Options:** Affordable, flat by-door fees, easy security user-, schedule- & door-management services for school, business, campus and more. Smartphone options for real-time emergency or occupant alerts &/or managing access events, lockdown and mustering badgeholders in.



New! MVP EZ Access App-Only, Remote Cloud-Hosted Platform for All Trilogy Networkx Locks & NA-Panels:
Configure, Command & Control All from a Smartphone.

NAPCO Access 1.800.645.9445
Alarm Lock | Continental | Marks

Trilogy, Networkx, ArchiTech MVP & MVP EZ/Access are trademarks of NAPCO.



Get Started



ACCESS CONTROL & DOOR HARDWARE

HID's OMNIKEY SE Plug: A Reader as Mobile as You Are



The OMNIKEY SE Plug is an ultra-compact USB-C credential reader designed for professionals on the move. It ensures seamless access to workplace systems and resources from any location – whether working remotely, traveling, or in the field.



With its cable-free, plug-and-play design, the OMNIKEY SE Plug offers hassle-free deployment and multi-device compatibility. No drivers required – just plug it in and start working securely. Compatible with smartphones, tablets, and laptops, this reader supports multiple operating systems, as well as passkeys, and advanced multi-factor

authentication (MFA) for strong, passwordless authentication.

OMNIKEY SE Plug supports field workforces across diverse industries, including healthcare, law enforcement, first response, retail, and logistics – making it ideal for organizations with mobile teams. OMNIKEY SE Plug offers multiple benefits:

- **Portable and Convenient:** Lightweight, pocket-sized design for secure on-the-go authentication.
- **Flexible for Any Environment:** Perfect for remote work and travel.
- **FIDO2 and MFA Support:** Secure, passwordless authentication leveraging public key cryptography to prevent phishing and credential theft.
- **Plug-and-Play:** Quick setup with no drivers needed.
- **Mobility-Friendly:** Cable-free design optimized for mobile devices.
- **Smart Connector Design:** Asymmetric USB-C positioning allows 180° rotation to keep other ports accessible.

www.hidglobal.com/products/omnikey-se-plug



Request more information: www.securityinfowatch.com/55307697

Camden's Universal RIM Strikes with Preload

Camden has introduced a new ½-inch version of its award-winning surface mount RIM strike with preload.

The new CX-EPD1299L Universal series RIM strike doesn't compromise on performance and will operate where other strikes fail. The patented low-profile design enables it to operate with up to 15lbs of preload pressure, preventing the most common cause of strike failure caused by differences in air pressure common in stairwell doors.

Camden's 1299L series strikes also include 1/8" and 1/4" spacer plates to accommodate up to 3/4" latch projections.

Also available is the sleek CX-EPD1289L Universal series that delivers application flexibility and includes UL security and Grade 1 fire rating. Installation is quick and easy, as a convenient metal mounting jig is also included.

Both strikes feature field configured latch monitoring, selectable fail-safe, fail-secure operation, non-handed left or right, and dual voltage, so there's no need to stock a range of RIM strike models. Both are available in heavy-duty stainless-steel or sleek black finish and are backed by Camden's exclusive no-hassle five-year warranty.

For more information, please visit the links below.

www.camdencontrols.com/products/CX_EPD1299L



Request more information: www.securityinfowatch.com/55331719

Marks USA Wireless Deadbolt Series: Ideal for Multifamily Access Control

The Marks Wireless Deadbolt Series combines the strength of a traditional deadbolt with advanced electronic access technology for today's multifamily, student housing, and mixed-use properties.

Designed for quick installation and code compliance, these locks provide both the durability property owners expect and the convenience residents demand.

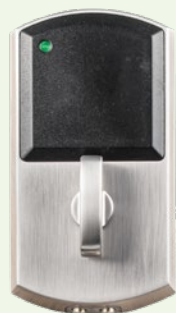
Available as standalone or networked interconnected models, the series offers flexibility for any application. Systems can be managed through the mobile-friendly MVP EZ App or integrated with the MVP Access Cloud for centralized administration across multiple sites.

Installation is simple, requiring minimal door prep, making it ideal for new construction or retrofit projects.

Property managers can select from Bluetooth, mobile, proximity, or MIFARE high-security credentials to meet the desired balance of security and convenience. With a wide selection of hundreds of Marks architectural trims, finishes, and lever styles, the Marks Wireless Deadbolt Series delivers professional-grade protection and an enhanced user experience while providing locksmiths and dealers with an efficient, profitable solution for this fast-growing market.

For more information, visit the links below, contact your Marks USA sales representative or local distributor, or call 1.800.645.9445.

<https://marksusa.com>



Request more information: www.securityinfowatch.com/55329904



Gunnebo GyroSec Revolving Door System

The Gunnebo GyroSec offers a choice of security levels to prevent tailgating and piggybacking that ensures no unauthorized people can enter a facility. It is aesthetically pleasing and offers simultaneous bi-directional passage and two-person detection in both a three-wing and a four-wing version, ideal for offices, data centers, and other high-security sites. It offers an elegant design able to maintain visibility of the existing finished floor with various finishes, door sizes, breakout wings, external night shutters, glass upgrades, status light

pictograms, floor carpet, and more.

Request more information: www.securityinfowatch.com/55313462

Wavelynx APEX Readers

The APEX Reader comes in four versatile form factors, including a Mullion Keypad option, features flexible installation options, and has increased durability with IP65+ weather resistance. Its universal credential compatibility supports everything from legacy Prox cards to modern solutions like LEAF or mobile wallet credentials. Its modular firmware evolves with emerging technologies, while OSDP V2.2 verification and patented OSDP Autodetect provide cost-effective legacy-to-modern migration without costly rewiring. Premium aesthetics with sleek design transform utilitarian hardware into professional installations.

Request more information: www.securityinfowatch.com/55295413



XE360™ Series

Wireless Tubular Lock



Exit device sold separately



The XE360™ Series is the newest wireless lock family from Schlage. The XE360 tubular lock is designed with the options, features and style most desired by multifamily properties, at an attractive price point.

- XE360 currently works within No-Tour or offline access control systems and supports the latest credential technologies.
- The XE360 Series is also available as mortise, mortise deadbolt and exit trim and suites with other Schlage families.

Contact your local IDN to place an order or for a quote



WE MAKE SECURITY SIMPLE

www.idn-inc.com
OVER 50 LOCATIONS IN THE U.S. AND CANADA



ACCESS CONTROL & DOOR HARDWARE



Alarm Controls: Everyday Access Control, Simplified

When access control needs to be reliable, straightforward, and built for daily use, start with Alarm Controls. From maglocks to push buttons and no-touch sensors, Alarm Controls delivers dependable access solutions for high-traffic commercial environments. Whether securing perimeter or interior openings, our full line of products ensures seamless integration for any need. Designed for quick installation and consistent performance, Alarm Controls delivers everyday access control – made simple. Visit the links below to learn more or follow Alarm Controls on LinkedIn and Facebook.

www.alarmcontrols.com

Request more information: www.securityinfowatch.com/10212738



Alvarado Argus V60 Optical Turnstile from dormakaba

With a housing footprint of 9.5" x 7", the compact Argus V60 can fit in the smallest of spaces, especially in areas such as foyers or inside office buildings. With its compact dimensions and a wide range of finish options, the optical turnstile adapts to modern

interior design. A choice between uni- and bi-directional separation enables the passages to be monitored using the new dormakaba sensor technology in both the entry and exit directions. The door leaves can be raised to be visually compatible with the top edge of the turnstile's side cabinets. Card readers can be surface-mounted or concealed under a glass cover with illuminated RFID icon.

Request more information: www.securityinfowatch.com/21296089



HES: Every Lockset. Every Application.

From faster installs to full system integration, HES electric strikes are engineered for more. Built-in intelligence, flexible options, and proven reliability make them easier to install, reliable under pressure, and ready for any opening, from simple retrofits and upgrades to more complex deployments. Wherever security takes you, HES delivers the performance and flexibility you need to keep every access point covered. Visit the links below to learn more or follow HES on LinkedIn and Facebook.

<http://hesinnovations.com>

Request more information: www.securityinfowatch.com/10213861



Delta Scientific DSC50 "S" Barrier

Delta Scientific's DSC50 "S" Barrier is a light-weight, crash-rated security solution tailored for temporary deployment across high-traffic urban environments. The barrier is designed to provide

rapid, visually cohesive, and budget-sensitive protection for municipalities, venue operators, and security leaders. With a sleek profile, modular design, patented anti-ram technology, and requiring no permanent infrastructure, it is ideal for events, parades, and civic celebrations, emergency crowd control, short-term construction and traffic redirection zones, and more.

Request more information: www.securityinfowatch.com/55308378



SMART HOME

Alarm.com ADC-T25 Smart Thermostat

The ADC-T25 Smart Thermostat from Alarm.com sets a new standard in easy-to-install, professionally graded energy management. Designed for rapid installs and wide system compatibility, it empowers dealers to complete more jobs – no C-wire or retrofit kit required – thanks to its battery-powered option and auto-detection technology.

Featuring Alarm.com platform integration, the unit lets users control temperature, scheduling, and automation straight from their app. Monthly reports deliver actionable system metrics and efficiency tips, while proactive health alerts keep owners one step ahead of potential HVAC issues.

It supports Pro HVAC Monitoring that connects customers and service providers instantly if anomalies are detected, with service appointments scheduled right through the Alarm.com app. Dealers also get a boost in recurring revenue opportunities and simplified support.

Expand your offering with Demand Response program support, allowing customers to earn incentives by saving energy during peak periods. Modern styling and reliable performance mean the T25 fits any home or business. Other features:

- No C-wire or retrofit kit needed
- Smart auto-configuration
- Remote control and automation via Alarm.com app
- Proactive system health notifications
- Demand Response support
- Pro HVAC Monitoring integration

<https://alarm.com>



Request more information: www.securityinfowatch.com/55304892

ADT+ Yale Assure Lock 2 Touch with Z-Wave

The Yale Assure Lock 2 Touch with Z-Wave for ADT+ offers fingerprint control and leverages the newly introduced Z-Wave User Credential Command Class. This allows users to unlock and disarm their ADT+ security system using just their fingerprint. By directly integrating with the ADT+ Base, the lock uniquely enables users to arm and disarm their security system from the lock itself, creating a streamlined security experience. In addition, ADT is rolling out a major update to the ADT+ app, introducing Home/Away functionality, which leverages geofencing to provide real-time household awareness and automate security settings based on user presence.

Request more information: www.securityinfowatch.com/55287059



Aqara Smart Lock U200 Lite

Aqara's Smart Lock U200 Lite features a retrofit design compatible with most Euro mortise locks. It also supports Matter over Thread to ensure compatibility with a wide range of connected devices and seamless integration into users' existing smart home setups. Built on the Thread protocol, which is purposely developed for IoT devices, it integrates with major platforms, including Alexa, Apple Home, Google Home, Home Assistant, and SmartThings, without the need for a proprietary hub. It can also be integrated with a variety of smart devices, from video doorbells and surveillance cameras to smart sensors.

Request more information: www.securityinfowatch.com/55297862





Your Customers deserve a Wolflok Because why trust anything less?

Independently tested and security-certified, Wolflok delivers reliable, high-security solutions for granting access without being on-site.

Engineered to withstand both brute-force and covert attacks, Wolflok simplifies access, strengthens security, and keeps operations running smoothly.

Featuring a patented multi-push keypad with up to 9.7 million possible combinations, advanced security features, and illuminated buttons for easy use in any environment, Wolflok is built for the real world - taking reliability and protection to the next level and redefining secure key control.

Upgrade your access management today.



Officially the highest security rating in its class



Heavy duty build, designed for real world attacks



Patented multi-push keypad giving 9.7 million code combinations



Illuminated buttons and internal vault



Anti-Saw, Anti-Drill and Anti-Pick mechanisms



Same digit can be used up to 4 times in a code



Go Pro

Need an even higher level of protection? Meet **Wolflok Pro**.

Built for the most rigorous threats, Wolflok Pro adds an internal **steel vault** and extra **nitride security pins** for a deeper layer of defence - ideal for high-risk sites and critical access points.



W10

Watch Wolflok in action

Scan the QR for the attack-testing video.





B150: Dual Voltage with Intelligence from LifeSafety Power

Turn single-voltage power systems into dual-voltage with remote management with LifeSafety Power's B150 Intelligent Step-Down Converter. Its intelligent design, remote management capabilities, and features make it a dependable choice for integrators seeking a flexible and efficient power conversion solution.

The B150 offers two output configurations: a fixed 12VDC output and a field-adjustable output ranging from 3 to 18VDC, both capable of delivering up to 6 amps of current. The LED display visually reports output voltage, current, and input power without additional tools. When installed with NetLink, power output and information on the LED display can also be remotely monitored, managed, and controlled.

Advanced protection features such as overcurrent, overvoltage, and thermal shutdown safeguards enhance system reliability and prevent potential damage to both the converter and connected components. The B150's compact design and cost-effective power conversion make it suitable for integration into space-constrained environments that require dual voltage systems. This Intelligent Step-Down Converter is uniquely equipped to support card readers, access control panels, video intercoms, CCTV cameras, IT modems/routers, low-voltage lighting, USB-powered equipment, and other electronics in commercial sectors.

www.lifesafetypower.com



2025 **SIW** SECURITY INFOWATCH.COM
READERS' CHOICE
AWARDS
★ TOP PRODUCT ★



Request more information: www.securityinfowatch.com/55270192

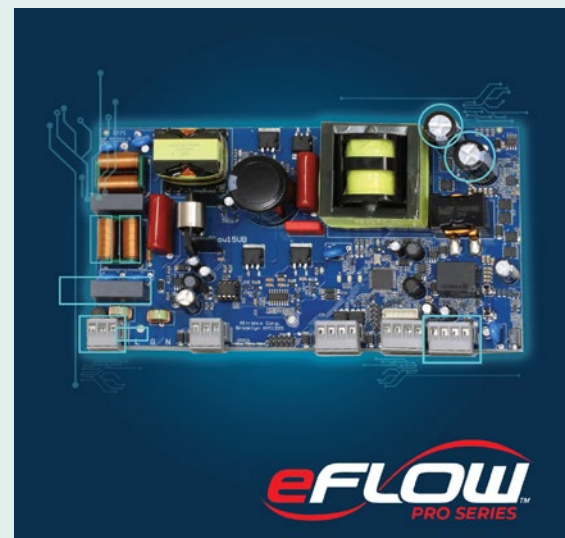
Altronix eFlow15UB Universal Power Supply/Charger

The eFlow Pro Series is the latest in power innovations from Altronix. The eFlow15UB auto-ranging power supply with LiFePO4 charging is a new universal power supply/charger that converts 90-256VAC input into a selectable 12VDC output providing up to 14A, or a 24VDC output providing up to 10A – with a built-in charger for SLA or LiFePO4 batteries.

Advanced features include: Removable AC terminal blocks, overvoltage protection, fire alarm disconnect, and low battery shutdown to prevent deep discharge. Built-in LINQ2 interface enables the option for remote monitoring, control, and reporting of power diagnostics over the network.

eFlow15UB is the ideal power solution for access control and security applications anywhere – backed by Altronix's lifetime warranty.

www.altronix.com/products/eFlow15UB



Request more information: www.securityinfowatch.com/55313294



KEY CONTROL

ValidiKey Pro from CyberLock

Cyberlock's ValidiKey Pro mechanical key management system features a large, five-inch touchscreen display and an advanced reader supporting five credential options: RFID cards, infrared-compatible CyberKey smart keys, mission numbers, Bluetooth, and NFC. The unit supports encrypted RFID cards, enhancing compatibility with third-party systems. The larger display enhances detail and functionality, featuring larger icons for key statuses. With the larger screen size, users can conveniently select from a list of missions, simplifying the key checkout process. ValidiKey Rings can also be issued by the ValidiKey Pro to audit attached mechanical keys.

Request more information: www.securityinfowatch.com/55270673



Control iD CREATING ACCESS FOR THE FUTURE

Smarter security. Effortless control. All at a glance.

Intelligent facial identification technology that blends leading-edge security with everyday ease. Integrated solutions empower you to protect every corner of your facility while keeping access simple, intuitive, and efficient.



iDFace Max & iDFace Pro



Learn more at:
intelligentopenings.com/ControlID

ASSA ABLOY

Wolflok Key Lock Boxes

Wolflok key lock boxes deliver maximum security key storage and access control for professionals who demand absolute reliability.

Built with a patented multi-push keypad, each digit can be used up to four times in a code, allowing 9.7 million possible code combinations.

Independently tested and security-certified, Wolflok is engineered for real-world threats. It is designed to resist both brute-force and stealth attacks, with a patented anti-picking mechanism and enhanced features such as anti-saw nitride pins, coned anti-drill hinge pins, and heavy-duty zinc alloy construction. The result: robust, long-lasting, and reliable defense unlike anything else on the market.

Wolflok offers a seamless, secure way to manage property access – whether for real estate teams, facility managers, service providers, or homeowners. With Wolflok, sharing keys becomes effortless, access stays protected, and operations run smoothly.

Why choose anything less? Your customers deserve a Wolflok.

www.wolflok.com



Request more information: www.securityinfowatch.com/55329907

SALTO **W**ECOSYSTEM



Smart building management solutions.

Salto delivers the most advanced, flexible, and secure access control solutions for all types of industry applications.

salto 
INSPIRED ACCESS

25
YEARS

salto.us



THREAT DETECTION

Acoem ATD-300 Gun Detection Sensor

Acoem's ATD (Acoustic Threat Detection) System, recognized with an Honorable Mention in the Readers' Choice Awards, is redefining physical security by making advanced gunshot detection an affordable, practical addition to any security portfolio.



2025 SIW SECURITY INFOWATCH.COM
READERS' CHOICE AWARDS
HONORABLE MENTION

This single-sensor solution provides immediate, precise location alerts and instantly slews PTZ cameras toward the threat. This gives security teams real-time visual confirmation as a situation unfolds, boosting situational awareness and capturing critical evidence. Edge processing allows ATD sensors to be deployed anywhere, from fixed perimeters to temporary coverage zones on mobile trailers, and eliminates the need for remote servers or multi-sensor triangulation complexity. A single sensor covers a massive 500-foot radius – equal to 10 football fields – dramatically reducing deployment cost and complexity.

The technical foundation is Acoem's powerful edge-based AI neural network engineered to reject false positives like fireworks, car backfires, or construction noise. The Acoem ATD-300 sensor just received its most advanced neural net update yet. Built on one of the world's largest acoustic libraries, the ATD AI engine is continually updated by Acoem's engineering team to ensure unmatched accuracy in complex environments. Acoem ATD answers security demands for both greater accuracy and greater deployment flexibility. Learn more and schedule a demo today!



<https://acoemATD.com>

Request more information: www.securityinfowatch.com/55274876

MailSecur MS400 T-ray Screening System from RaySecur



RaySecur's MailSecur MS400 T-ray security screening system is designed to combat the evolving threats posed by smaller, dangerous, and difficult-to-detect substances being sent through physical mail to government agencies, corporations, and high-profile individuals. The unit is a commercial terahertz (T-ray) security imaging system operating at 400 GHz, offering real-time 3-D video imaging with even higher resolution to detect the smallest threats, such as white powders, liquids, and chemically-laced papers that are sealed inside mail and often evade conventional detection. The system is sustainable and safe as it does not generate harmful radiation like X-ray machines.

Request more information: www.securityinfowatch.com/55139703

ShotPoint Gunshot Detection System from Databuoy



Databuoy's ShotPoint gunfire detection and localization system senses gunfire, isolates the source, and instantly transmits shooter location alerts. Through the proprietary "Know When It Counts" application, shot locations are displayed onto maps and also floor plans with pinpoint accuracy. Each shot report can be annotated with imagery and video from nearby cameras. ShotPoint can also instantly transmit reports to inform responders and warn the public. Capable of tracing rifle shots to their source, it can locate an elevated shooter, even if rifle shots come from outside the local coverage area, by tracing the bullet path.

Request more information: www.securityinfowatch.com/12431077



COMMUNICATIONS

Salto XS4 Com iGO Smart Door Intercom

The Salto XS4 Com is an innovative cloud-based door intercom solution that transforms building access and communication by integrating video intercom capabilities with advanced access control technology. This hardware-free solution leverages the user's own smartphone in combination with QR code and NFC technology to provide secure, convenient visitor access without complex installations or wiring. Key features include:

- Hassle-free installation and minimal setup and no complex wiring
- Real-time video/audio communication for visitors, tenants, or building staff
- Remote door unlocking capabilities from anywhere via smartphone
- Integration with Salto's access control platforms (Space, KS and Homelock)
- Geofencing technology for enhanced security

The XS4 Com iGO product line includes polycarbonate plates and stickers with QR code and NFC functionality. The system allows visitors to simply scan a QR code or tap their phone on the NFC plate to initiate an access request call, then tenants can verify visitors via secure video calls and grant access remotely through the XS4 Com app. Designed for versatility, XS4 Com is suitable for commercial buildings, multi-family, healthcare facilities, educational institutions, hospitality venues, and workspaces, enhancing security and streamlining access management across various environments.



2025 SIW SECURITY INFOWATCH.COM
READERS' CHOICE AWARDS
HONORABLE MENTION



<https://salto.us>

Request more information: www.securityinfowatch.com/55264893

Viking Electronics VoIP Emergency Phone Panic Button



The Viking PB-3-IP is a VoIP Emergency Phone Panic Button designed for discreet installation under a desk or countertop, providing a fast, reliable way to silently call for assistance. When activated, the called party can silently monitor the situation or press "#" to initiate two-way hands-free communication. Functioning as a SIP endpoint, the PB-3-IP connects with a single CAT 5/6 cable from a PoE switch and is easily programmed via PC on the same LAN or remotely using a static IP. The unit can dial up to five emergency numbers, deliver a digital voice message or DTMF location code, and features a bright red LED indicator that illuminates when an emergency call is active - delivering fast, reliable communication when it matters most.

<https://vikingelectronics.com/products/pb-3-ip>

Request more information: www.securityinfowatch.com/21121625



Talkaphone Emergency Phone + Autonomous Drone Integration

The Talkaphone Emergency Phone + Autonomous Drone Integration merges Blue Light Emergency Phones with Sunflower Lab's Beehive autonomous drone-in-a-box system. This integration creates a powerful, scalable platform that redefines situational awareness, emergency response, and deterrence, without the need for major infrastructure overhauls. When a user presses the emergency button on a Talkaphone Blue Light Phone, a fully autonomous "Bee" drone is immediately deployed from the "Hive" base station. Within five seconds, the drone begins streaming live video to security personnel, offering rapid situational awareness while also reassuring the caller. The Blue Light Phone continues to serve as a reliable, hands-free communication point.

Request more information: www.securityinfowatch.com/55308698



RACK MOUNT



HARDENED OUTDOOR



WALL MOUNT

ACCESS & POWER INTEGRATION... ...ENDLESS POSSIBILITIES

TROVE™ lets you design and deploy your preferred brand of access control with Altronix power solutions in virtually any environment.

- Simplifies board layout & wire management
- Reduces installation and labor cost
- Scalable for any size system
- Available as pre-configured and pre-wired kits

Streamline your access control deployments with **TROVE™**. Only from Altronix.

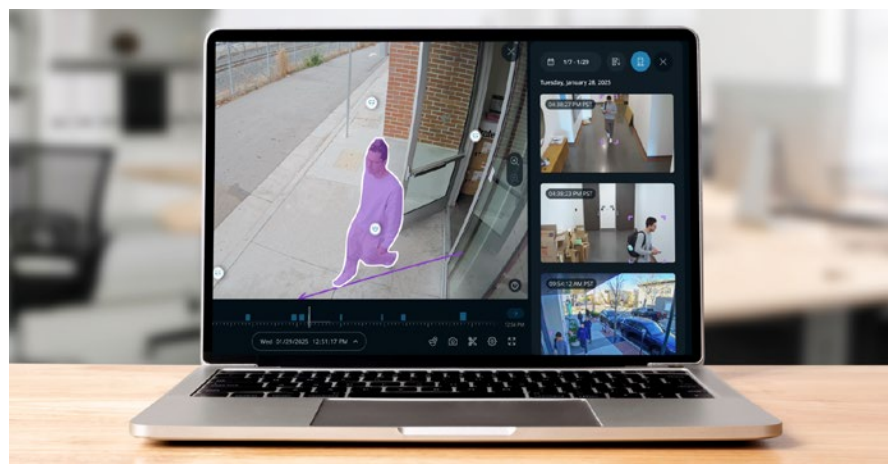
Run With It™



Cozaint ALICE1 Video Storage System

Cozaint's ALICE1 is a self-contained video surveillance recording and storage system that provides businesses with decades of secure, affordable video retention. By leveraging Linear Tape Open (LTO) technology with a cloud-based search platform, ALICE1 makes it possible for organizations to store unlimited video footage at a fraction of the cost of traditional hard-drive solutions. Each LTO8 tape costs under \$70 and can record petabytes of video, lasting up to 30 years. Businesses can record at the highest resolution and at full frame rate continuously without any additional compression. It enables multi-location businesses to record video locally, send tapes securely to a central archive, and quickly retrieve footage.

Request more information: www.securityinfowatch.com/55318369



Verkada History Player Search

With a single click, Verkada's History Player Search uses advanced computer vision analytics to generate a chronological playback of an individual or vehicle's movement across all cameras, making it easy to find key moments, jump to events, and share clips as part of a comprehensive Incident Report. Built on Verkada's cloud-based Command platform, History Player Search joins a suite of advanced tools, including face search, attribute search, and AI-powered search, to help teams find footage faster and act sooner. Whether securing a school, corporate campus, or retail store, teams can now conduct complex investigations in minutes.

Request more information: www.securityinfowatch.com/55309351

The Power of the Connected Workplace

HID® OMNIKEY® Readers and Modules facilitate best-in-class identity authentication that's secure, simple and smart, from physical access like doors and locks to digital systems like IT networks, EV charging, secure printing, cafeteria vending and more.



Learn more at
campaigns.hidglobal.com/rfid-enterprise

Powering **Trusted Identities**

©2025 HID Global Corporation/ASSA ABLOY AB. All rights reserved.
Part of ASSA ABLOY



HID

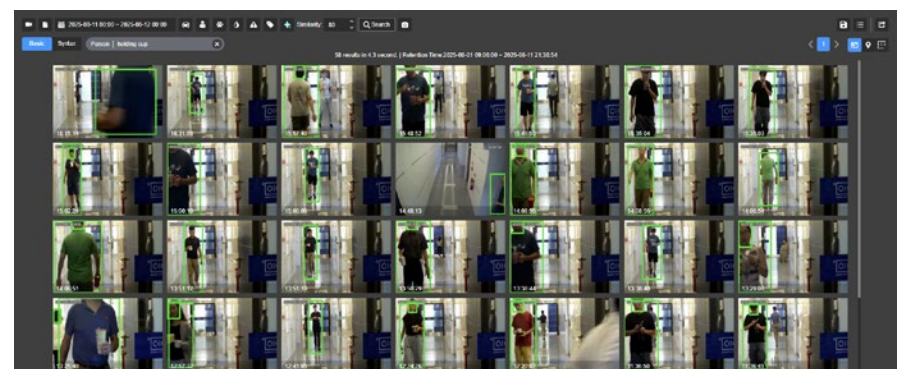


IDIS Edge AI Plus Cameras

The new IDIS Edge AI Plus camera range is powered by the upgraded IDLA Pro analytics engine, boosting the cameras' efficiency with powerful functions such as crowd detection, abandoned/ removed object alerts, and fall detection. An innovative

A-Cut feature speeds investigations by automatically cropping images and enabling intuitive attribute searches. Identify gender, age, eyewear, hats, masks, or carried bags with precision, and classify vehicle types and colors instantly. Built for reliability in any environment, Edge AI Plus empowers security teams to cut false alarms, accelerate response, and achieve next-level surveillance intelligence effortlessly.

Request more information: www.securityinfowatch.com/55313454



Vaidio 9.1 AI Video Platform

Vaidio 9.1 gives enterprises AI-driven insights from visual data to boost safety, security, and operational efficiency. With enhanced natural language video search, powered by next-generation language models, users can now ask complex questions in plain English. With real-time capacity estimation and preview capabilities, the system's auto-configuration enhancements ensure optimized deployments without exceeding resource limits. It can also track vehicles as they move between cameras without losing continuity. Built for smart cities and transit systems, this feature boosts situational awareness and strengthens public safety operations. Other new features include a redesigned interface, expanded external integrations, advanced dwell time analytics, and more.

Request more information: www.securityinfowatch.com/55313416



Ajax Hybrid Illumination Cameras

Ajax has introduced three hybrid light illumination cameras: the BulletCam HL, TurretCam HL, and DomeCam Mini HL. The cameras combine IR and white light illumination to deliver color footage even in low-light conditions, for better image quality, more precise object recognition, and visual intruder deterrence at residential and commercial sites. When motion or an object is detected, the devices switch from infrared (IR) to white light and deliver color footage instead of black-and-white. This helps identify vehicle details, clothing colors, and other visual cues that may be less distinct in the IR mode. The white light can also deter intruders, making it clear that they are exposed and being recorded.

Request more information:

www.securityinfowatch.com/55309893

It takes a Viking to...

PROTECT WHAT MATTERS



**KEEP THEM
SAFE & SECURE**

When it comes to safety and security, there is **no compromise**. You need solutions that are both strong and dependable.

Viking Entry Systems and Emergency Phones are designed for **long-lasting performance**, with optional Enhanced Weather Protection providing extra defense in tough outdoor conditions.

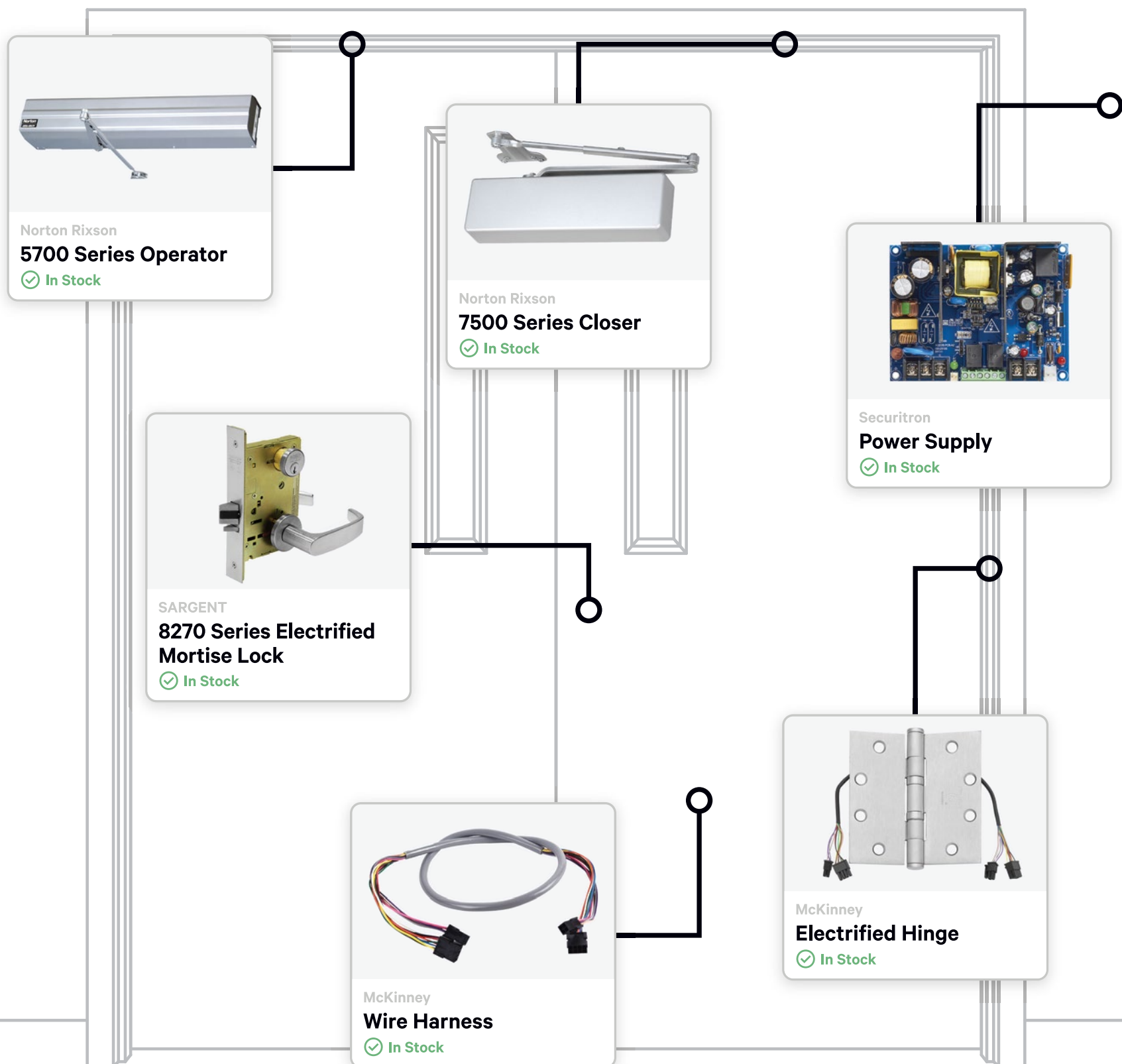
Say goodbye to unreliability, and hello to rugged durability... **YOU NEED A VIKING.**



 **DESIGNED
MANUFACTURED
& SUPPORTED**
USA

VIKING

715.386.8861
vikingelectronics.com



THE Source for Access Control and Security Hardware.

SECLOCK is the destination for all door hardware. Discover an extensive in-stock inventory from all leading manufacturers, work with our team of technical experts, and experience same-day shipping for any item you need.

SECLOCK is THE logical choice.

McKinney
ASSA ABLOY

SARGENT
ASSA ABLOY

NORTON
RIXSON
ASSA ABLOY

SECURITRON
ASSA ABLOY