

BIGBOOK

SECURITY
BUSINESS
The Path to Greater Profits for Security Integrators

SECURITY
TECHNOLOGY EXECUTIVE

LOCKSMITH LEDGER
International

THE SECURITY INDUSTRY'S PRODUCT GUIDE • WINTER 2022

Mullion Mount IP Video Door Station Helps to Reduce Germs at Entrances

Under seven inches tall, and a slim width under two inches, the new IX Series IX-DVM Mullion Mount IP Video Door Station has a small footprint with a BIG IMPACT.

Being UL Listed and TAA Compliant, this feature rich station opens doors to more job opportunities with its compact form and its various built-in benefits:

- WDR camera avoids sun glare and silhouettes regardless of the mounting angle.
- LED indicator lights meet ADA regulations with clear visual cues.
- Touchless call sensor reduces the spread of germs.
- Card slot for microSD™ simplifies on-board recording.
- Aluminum die cast withstands everyday use at busy entrances.
- Low-light LED provides illumination when conditions are too dark.

Whether installing new IX Series systems, or upgrading existing ones, the DVM will impress customers with its timeless style, expanded capabilities, and its amazing flexibility to be mounted in more compact locations.

www.aiphone.com/products/ix-dvm



AIPHONE

Request more information: www.securityinfowatch.com/21277603

Micron i400 microSD Card

Technology innovations like 5G, artificial intelligence (AI) and the Internet of Things (IoT) are driving growth in AI-enabled cameras in video security applications and data storage at the edge.

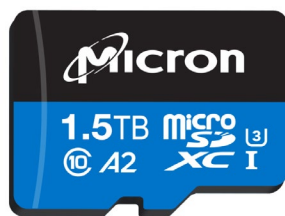
Micron's microSD card is specifically designed for handling continuous high-quality video recording and multiple AI capture events concurrently.

Adopting edge storage through the microSD card can enhance video security system performance by enabling flexibility and scalability, and by reducing network bandwidth requirements and lowering the total cost of ownership.

Unlike most memory cards on the market that are consumer-grade and have limited write capability, Micron's i400 microSD cards are designed for AI-enhanced video applications with features such as:

- High Endurance (32GB to 1.5TB): Supports up to 5 years of high-quality, continuous, 24/7 video recording and up to 4 months of storage (assumes a bit rate of 1 megabit per second) with the highest-capacity microSD card in the world.
- Outstanding Recording Performance: The optimized design delivers sustained performance for concurrent 4K video recording and up to 8 AI capture events every second.
- Industrial Quality: Reliable high quality provides a 2 million hour mean time to failure (MTTF) rating, plus 5-proof protection encompassing water, shock, x-ray, magnet and impact.
- Smart Management: Health monitoring tracks usage and card health, and the field firmware update provides a secure way for the card to be updated remotely when needed.

www.micron.com



Micron

Request more information: www.securityinfowatch.com/21278805

Special Purpose Doors for Military and Government Buildings

Krieger's special purpose doors are custom-manufactured to protect personnel and property while meeting specialized hybrid performance requirements in U.S. military and government buildings.

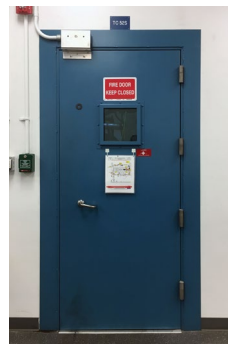
Blast and Pressure Resistance Doors – Krieger's blast-resistant doors meet UFC 4-010-01: DoD Minimum Anti-terrorism Standards for Buildings, Anti-Terrorism Force Protection (ATFP), and industrial PIP standards to protect personnel and property from explosions and explosion-borne projectiles.

Doors with UL 752 Bullet Resistance – Krieger's bullet-resistant doors protect personnel and property from small arms fire by meeting UL 752 Levels 1-10 and N.I.J. Levels I, IIA, II, IIIA, III, and IV. Ballistic standards comply with MIL-SAMIT Parts 1 and 2. All Krieger door assemblies are available in manual or power-operated as needed.

New! Radio Frequency/Acoustical Hybrid Door – Krieger now offers a unique hybrid door with 40 dB radio frequency (RF) protection and an STC 51 acoustical rating—all in a standard 1 $\frac{3}{4}$ " thick door panel. The thinner design makes it an ideal choice for any new or existing construction where RF and acoustical ratings are required. Krieger has a long history of providing SCIF and RF door combinations for military and government installations, including the Pentagon. SCIF door assemblies are rated up to STC 55 and RF shielding meets TEMPEST and IEEE 299 standards.

www.KriegerProducts.com

KRIEGER
SPECIALTY PRODUCTS



Request more information: www.securityinfowatch.com/21246788

Schlage Electronic Locks with HID Credential Support

At Schlage, we understand that customers value solutions that are open, interoperable and flexible. We offer three series of electronic locks that allow for expansion of access control deeper into the building while utilizing existing HID® credentials. The Si option on Schlage AD Series, NDE and LE electronic locks provide full support for the secure application area of HID iCLASS®, iCLASS SE®, Seos® and NFC mobile credentials as well as Schlage MIFARE® smart and mobile credentials. This interoperability gives our customers the freedom of choice when it comes to credential technologies.

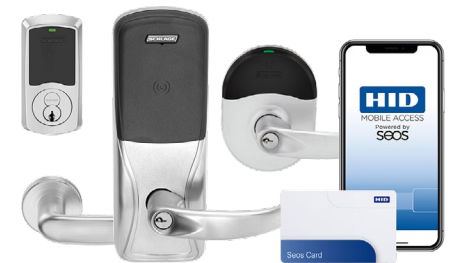
Locks available with the Si option:

- NDEBSi mobile enabled wireless locks for cylindrical applications
- LEBSi mobile enabled wireless locks for mortise applications
- AD Series with Si or SiK reader for cylindrical, mortise or exit device applications

Electronic locks can be customized with a variety of lever designs, finishes and function to meet the needs of the opening. Schlage electronic locks have been integrated into leading physical access control systems through our PACS alliance program; features and capabilities will vary by provider.

<https://commercial.schlage.com>

SCHLAGE



Request more information: www.securityinfowatch.com/21287203

RIM PANIC ELECTRIC STRIKES THAT DO MORE...

THE ENHANCED 4850



REPLACES
9400 & 9600
IN ONE BOX

THE SUPERIOR 4800F



REPLACES
9500 & 9600
IN ONE BOX

The 4850 1/2" strike is an incredibly flexible rim panic strike. It comes with 3 spacers and an open latch cavity to accept up to a 1" throw and installation situations. Being PoE friendly means it uses less amps and is easier to use without additional power supplies.

The 4800F 3/4" strike is a heavy-duty rim panic with a simple 1 piece locking mechanism that will outlast the competition. It's 3 hour fire rated with no upcharge (like a 9500) and can be used in everyday installations whether it's needed or not. Always be prepared!

INNOVATIVE DESIGNS - SUPERIOR PRODUCTS

Request information: www.SecurityInfoWatch.com/10215438

TRINE
ACCESS TECHNOLOGY®

SEARCH "4850 ITL" FOR THE BEST INSTALLATION TOOL



Built in America, Based in America, Buy America



INTERNET OR CELLULAR SYSTEMS

DKS Telephone Access Systems can be connected with an internet or cellular connection. Both include the DKS Cloud that allows administrators to program the system from any internet connected device; laptop, tablet or smartphone! Team this with DKS' 900 MHz wireless access expansion to control access for up to 24 entry points.



PROXPLUS™ SECURE CARD READERS

For those applications that require a higher level of security than standard Proximity Card Readers and cards can offer. ProxPlus cards are programmed with a unique identifier, making them extremely secure and difficult to duplicate. And, since the DoorKing Card Reader outputs the card code in a 26-bit Wiegand format, they are compatible with almost any Access Control System on the market.



Telephone Entry

Gate Operators

Access Control

Traffic Control

doorking.com • 800-673-3299 • info@doorking.com


MADE IN USA

Member: AFA, DASMA, NAA, IDA,
NPA, SIA, SSA, CANASA, NOMMA



TRAFFIC CONTROL

DKS' latest innovations increases safety and lessens risks of damage. Developing its Pedestrian Protection System, and lighted barrier arms for better visibility – DKS has also released a Break-away arm system to help avoid damage to vehicles and the operator / arm. Available as new systems, and also to retrofit existing 1601 DKS Barrier Gate systems.

DC OPERATORS

When it comes to securing a high traffic gate in any location, or with unreliable power, DKS manufactures a full-size DC Gate Operator. With the ability to switch from AC to DC seamlessly and pull a full-size gate for hundreds of cycles from backup batteries, DC also means the operator can be completely off the grid with a solar power supply.



TABLE OF CONTENTS



B6 Special Section: The 2022 SecurityInfoWatch Readers' Choice Award Winners



B16 Access Control & Door Hardware



B22 Perimeter Security



B24 ID Cards, Badges & Printers



B25 Power Supplies



B26 Installation Tools



B27 Keys & Automotive



B28 Video Storage & Playback



B29 Video Surveillance Cameras & Software



B30 Communications



B32 Fire & Life Safety



B32 Residential & Smart Home



B34 Networking, IT & Cybersecurity

BIGBOOK

THE SECURITY INDUSTRY'S PRODUCT GUIDE ■ WINTER 2022

Advertiser Name	Page	WebSite URL
Access Hardware Supply	B34	www.securityinfowatch.com/10722906
Adams Rite Manufacturing Co.	B21	www.securityinfowatch.com/10212663
Allegion	B24	www.securityinfowatch.com/11248017
Altronix Corporation	B23	www.securityinfowatch.com/10212790
Ambient.ai	B24	www.securityinfowatch.com/21262217
Banner Solutions	B11	www.securityinfowatch.com/12071932
Camden Door Controls	B19	www.securityinfowatch.com/10213140
Command Access Technologies	B31	www.securityinfowatch.com/12140374
D&D Technologies	B33	www.securityinfowatch.com/10929523
Detex Corporation	B4	www.securityinfowatch.com/10213445
DKS DoorKing Systems	B3	www.securityinfowatch.com/10213482
IDN Inc.	B7	www.securityinfowatch.com/11291392
Micron Technology	B29	www.securityinfowatch.com/12355256
NAPCO Security Technologies	B17	www.securityinfowatch.com/10215125
SALTO Systems Inc.	B5	www.securityinfowatch.com/10225529
SDC-Security Door Controls	B35	www.securityinfowatch.com/10214991
Seclock	B36	www.securityinfowatch.com/10215009
Snap One	B13	www.securityinfowatch.com/21090092
STid	B25	www.securityinfowatch.com/12266353
STRATTEC Security Corp.	B27	www.locksmithledger.com/10173503
Teledyne FLIR	B28	www.securityinfowatch.com/10213696
Top Notch	B15	www.securityinfowatch.com/12129499
Trine Access	B2	www.securityinfowatch.com/10215438
Viking Electronics	B9	www.securityinfowatch.com/10556843

This index is supplied as a service to our readers. The publisher assumes no liability for omissions or errors.

PUBLISHED BY



1233 Janesville Ave
Fort Atkinson WI 53538
800-547-7377

THE BIG BOOK

is a supplement to *Locksmith Ledger*, *Security Business* and *Security Technology Executive* magazines.

EDITORIAL

Editor, The Big Book | Paul Rothman
1233 Janesville Avenue
Fort Atkinson, WI 53538
(847) 454-2731
prothman@securitybusinessmag.com

Editorial Director | Steve Lasky
(847) 454-2719
steveo@securityinfowatch.com

Editor, Locksmith Ledger | Will Christensen
Editor, Security Business | Paul Rothman
Editor, Security Technology Executive | Steve Lasky
Editor, SecurityInfoWatch.com | John Dobberstein

SALES

Group Publisher | Jolene Gulley-Bolton
(480) 524-1119
jgulley@endeavorb2b.com

Northeast US & East Canada
SecBusiness, STE, SecurityInfoWatch | Janice Welch
(224) 324-8508
janice@securityinfowatch.com

Midwest
Locksmith Ledger, SecBusiness, STE, SecurityInfoWatch | Brian Lowy
(847) 454-2724
brlowy@endeavorb2b.com

Western US & Western Canada
SecBusiness, STE, SecurityInfoWatch | Bobbie Ferraro
310-800-5252
bobbie@securityinfowatch.com

Display/classified | Amy Stauffer
(920) 259-4311
astauffer@endeavorb2b.com

PRODUCTION

Production Manager | Jane Pothlanski
jpothlanski@endeavorb2b.com

Ad Services Manager | Carmen Seeber
cseeber@endeavorb2b.com

Audience Development Manager | Delicia Poole
cwehal@endeavorb2b.com

Art Director | Eric Van Egeren
evanegeren@endeavorb2b.com

ENDEAVOR BUSINESS MEDIA, LLC

Chief Executive Officer | Chris Ferrell
Chief Revenue Officer/CMO | June Griffin
Chief Operations Officer | Patrick Raines
Chief Administrative and Legal Officer | Tracy Kane
EVP/Group Publisher | Lester Craft
EVP Special Projects | Kristine Russell
EVP Marketing Solutions | Jacquie Niemiec
VP Accounting | Angela Mitchell
VP Content | Travis Hessman
VP Digital Business Development | Monique Leija
VP Finance | Jessica Klug
VP Production Operations | Curt Pordes
VP Technology | Glenn Scheithauer

Subscription Customer Service
Toll-Free 877-382-9187; Local 847-559-7598
Circ.SecDealer@omeda.com

Article Reprints: reprints@endeavorb2b.com

Printed in the USA. Copyright 2022 Endeavor Business Media, LLC. All rights reserved. No part of this publication may be reproduced or transmitted in any form or by any means, electronic or mechanical, including photocopy, recordings or any information storage or retrieval system, without permission from the publisher.

Endeavor Business Media, LLC does not assume and hereby disclaims any liability to any person or company for any loss or damage caused by errors or omissions in the material herein, regardless of whether such errors result from negligence, accident or any other cause whatsoever. The views and opinions in the articles herein are not to be taken as official expressions of the publishers, unless so stated. The publishers do not warrant, either expressly or by implication, the factual accuracy of the articles herein, nor do they so warrant any views or opinions offered by the authors of said articles.

ALL YOU NEED TO BECOME AN EXPERT.



SIGN UP FOR TRAINING

Visit detex.com/train43
or call 800-729-3839.



Hands-on Training from Detex

Grab your screwdriver and get into some of the industry's most innovative safety and security hardware at a Detex training session.

Benefit from learning experiences that'll make you an expert in our advanced products and see for yourself how easy it is to make facilities more secure.



Request information: www.SecurityInfoWatch.com/10213445

The Most Advanced Electronic Lock. Ever.

The XS4 Original+ is the next generation of SALTO's most trusted and widely used electronic locks—now including Hardware Secure Element (HSE) technology.

Get the latest security features and advanced capabilities with shorter product delivery lead times.

Learn more at salto.us or call (866) GO SALTO

SALTO
inspired access

Request information: www.SecurityInfoWatch.com/10225529



In July, SecurityInfoWatch.com unveiled the security industry's first-ever Readers' Choice Awards program that is 100% decided by the very people who use, install – and even compete against – these products every day. More than 100 security industry manufacturers and software developers submitted products introduced in the physical security industry over the 12-month span of June 2021 through June 2022 for voting.

Once the vendor submission period ended, voting was open through the full month of September to any SecurityInfoWatch reader (one vote per IP address) in 13 different product categories, where we received more than 1,650 unique votes. Simply put, the product garnering the most votes in a particular category was named the winner. Honorable mention products received the second- or third-most votes in the category (two honorable mentions were chosen in the larger categories).

"SecurityInfoWatch congratulates all of the award winners in the first-ever Reader's Choice Awards," said SecurityInfoWatch Editorial Director Steve Lasky. "These products represent the best of the best among new technologies that are helping to secure people and property. We were truly overwhelmed by the number of responses during year one and look forward to seeing even greater participation in the years to come."

Without further ado, here are your Readers' Choice Products for 2022:



CATEGORY: Locks and Door Hardware

2022 SIW SECURITY INFOWATCH.COM
READERS' CHOICE AWARDS
★ TOP PRODUCT ★

Allegion's Schlage NDE and LE Locks with Si option

Schlage NDE and LE mobile-enabled wireless locks with Si option support the secure application area of HID smart and NFC mobile credentials. The interoperable locks are ideal for institutions already using HID iCLASS, iCLASS SE, or Seos credentials that want to extend access control further into their buildings using Schlage wireless locks. This option gives customers the flexibility to choose the solution that fits the needs of their facility and leverages existing credential investments.

Learn more about this product at <https://commercial.schlage.com>

FEATURED PRODUCT

SCHLAGE

2022 SIW SECURITY INFOWATCH.COM
READERS' CHOICE AWARDS
HONORABLE MENTION

Adams Rite by ASSA ABLOY DL100 Wireless Deadlatch

The DL100 combines electrified locking hardware to connect wirelessly to any new or existing access control system for aluminum-style doors, extending real-time security cost-effectively to more openings. It uses low-energy motorized EcoLatch technology for silent operation and supports HID multiclass SE and NFC/BLE mobile access card technologies.

Learn more about this product at www.adamsrite.com/en/products/deadlatches/dl100-wireless-deadlatch

FEATURED PRODUCT

Adams Rite
ASSA ABLOY

CATEGORY: Access Control Hardware

2022 SIW SECURITY INFOWATCH.COM
READERS' CHOICE AWARDS
★ TOP PRODUCT ★

Invixium IXM TFACE Dual-Biometric Reader

IXM TFACE is a dual-biometric reader built for access control or workforce management applications. Enclosed in a slim, mullion-mount design, it performs fast and accurate face recognition for masked or maskless individuals with liveness detection along with fingerprint, RFID, PIN or QR code authentication in seconds. It also features a Corning Gorilla Glass-protected LCD touchscreen, PoE+, Wi-Fi, IP65 and IK08 ratings.

Read more about the product and request more info at www.securityinfowatch.com/21253521



2022 SIW SECURITY INFOWATCH.COM
READERS' CHOICE AWARDS
HONORABLE MENTION

STid Spectre nano Reader

The SPECTRE nano reader helps expedite entry and exit from parking facilities using contactless technologies that can recognize either a driver, vehicle or both by using UHF windshield tags, a badge or even the driver's Bluetooth smartphone with integration of the STid Mobile ID ecosystem.

Learn more about this product at <https://stid-security.com/en/products/spectre-nano-uhf-bluetooth-multi-technology-reader>

FEATURED PRODUCT

2022 SIW SECURITY INFOWATCH.COM
READERS' CHOICE AWARDS
HONORABLE MENTION

Alarm.com Access Control Readers and Mobile Credentials

Alarm.com for Business customers can leverage these readers that support encrypted and mobile access credentials. Available in mullion, single gang, and keypad form factors, users can leverage smartphones to unlock doors instead of a separate badge or key fob.

Read more about the product and request more info at www.securityinfowatch.com/21265086

TRUSTED DURABILITY PROVEN PERFORMANCE

BEST 
dormakaba Group



The BEST 9K Series is easy to the core.

- *Easy Installation*
- *Proven Quality*
- *Reliable Performance*

It doesn't get better than BEST
www.bestaccess.com

Contact your local IDN to place an order or for a quote



WE MAKE SECURITY SIMPLE

www.idn-inc.com

OVER 50 LOCATIONS IN THE U.S. AND CANADA

Request information: www.SecurityInfoWatch.com/11291392

CATEGORY: Access Control Software

2022 **SIW SECURITY**
INFOWATCH.COM®
READERS' CHOICE
AWARDS™
★ TOP PRODUCT ★

Axis Communications
AXIS Camera Station
Secure Entry

Preloaded on Axis recorders and included in all AXIS Camera Station licenses, AXIS Camera Station Secure Entry provides access control management that gives operators complete insight into everything happening at a location. From retail stores to educational facilities and commercial buildings, the solution enables management of a single site and is designed with cybersecurity in mind, featuring encrypted communication to ensure user data is always protected.



Read more about the product and request more info at www.securityinfowatch.com/21223686

2022 **SIW SECURITY**
INFOWATCH.COM®
READERS' CHOICE
AWARDS™
HONORABLE MENTION

ACRE's Feenics One
Mobile App

The Feenics One Mobile App enables the management of an employee's digital identity. Mobile credentials can be managed and customers can enable two-factor authentication for access authorization at doors. It allows for password-less login capabilities to Feenics' access control and visitor management applications.



Read more about the product and request more info at www.securityinfowatch.com/21278720

CATEGORY: Video Surveillance Cameras

2022 **SIW SECURITY**
INFOWATCH.COM®
READERS' CHOICE
AWARDS™
★ TOP PRODUCT ★



Hanwha Techwin PNM-C12083RVD
Dual-Channel Multi-Directional Camera

The PNM-C12083RVD brings the power of AI to a multi-directional camera. The camera generates metadata tags for any person, face, vehicle, or license plate detected, which can be used for forensic search or for real-time notifications via compatible VMS. The camera also generates a DetectionShot (a frame of the scene when an object is detected), which can be displayed during a forensic search.

Read more about the product and request more info at www.securityinfowatch.com/21260432

2022 **SIW SECURITY**
INFOWATCH.COM®
READERS' CHOICE
AWARDS™
HONORABLE MENTION

Teledyne FLIR's
FLIR FH-Series
ID camera

FEATURED
PRODUCT

FLIR FH-Series ID are ruggedized, multi-spectral fixed cameras that integrate thermal imaging with 4K visible imaging for perimeter intruder detection. Built-in convolutional neural network (CNN) analytics detect and classify human and vehicle threats moving at high or low speeds, minimizing false alarms and operations costs.



Learn more about this product at www.flir.com/products/fh-series-id



2022 **SIW SECURITY**
INFOWATCH.COM®
READERS' CHOICE
AWARDS™
HONORABLE MENTION

i-PRO S-Series Multi-
Sensor AI Cameras

S-Series multi-sensor cameras come preloaded with four AI analytics applications packaged in the thinnest outdoor vandal and weather-resistant configurations available. Full AI support enables real-time alerts and detailed forensic search. Read more about the product and request more info at www.securityinfowatch.com/21266779



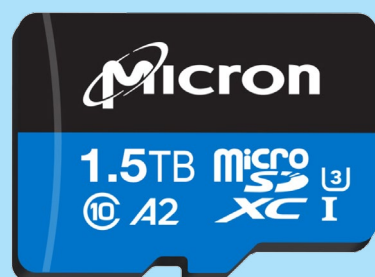
CATEGORY: Video Surveillance Storage & Playback

2022 **SIW SECURITY**
INFOWATCH.COM®
READERS' CHOICE
AWARDS™
★ TOP PRODUCT ★

Micron i400
microSD Card

Micron's i400 1.5TB microSD card delivers industrial storage for AI-enhanced video security and is ideally suited for video storage at the edge and for hybrid VSaaS deployments. Its 1.5TB density can store up to four months or 120 days of video security media locally, enabling users to optimize what data is stored in the cloud. This capacity eliminates the need to continuously upload data to the cloud for primary storage, which consumes network bandwidth and operational expenses.

Learn more about this product at www.micron.com/solutions/video-surveillance



FEATURED
PRODUCT

2022 **SIW SECURITY**
INFOWATCH.COM®
READERS' CHOICE
AWARDS™
HONORABLE MENTION



Salient Systems PowerPlatinum NVR

PowerPlatinum is a 2U rack-mount NVR designed to handle demanding IP video surveillance requirements. It meets enterprise video requirements with the offering of high-performance CPU power, 96GB memory, hot-swappable hard drives, and dual redundant hot-plug power supplies.

Read more about the product and request more info at www.securityinfowatch.com/21278806

TOUCH-FREE CALLING



E-30TF-IP



E-32TF-IP



E-20TF-IP

Goodbye germs, hello hands-free!

These Touch-Free VoIP Entry Phones are equipped with Viking's touchless motion sensor. A simple wave over the sensor will activate a call. Touch-free calling eliminates the exposure to germs and bacteria from typical push button switches.

The phones provide quick and reliable handsfree communication for SIP VoIP phone systems with PoE. They can be programmed from any touch tone phone, PC, or remotely using a static IP address.



Learn more about
**TOUCH-FREE
CALLING**

VIKING

 DESIGNED
MANUFACTURED
& SUPPORTED
USA

Start planning your installation!

715.386.8861

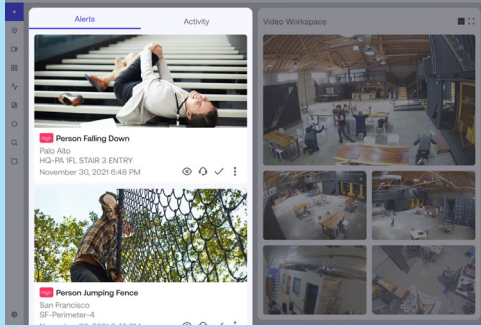
vikingelectronics.com

CATEGORY: Video Surveillance Software


2022 **SIW SECURITY** INFOWATCH.COM®
READERS' CHOICE AWARDS™
★ **TOP PRODUCT** ★

The Ambient.ai Platform

The Ambient.ai Platform uses computer vision intelligence to deliver near-human perception of surveillance video feeds at scale – automating threat detection and access control alert verification and enabling faster response. With real-time alerts, mobile dispatch, graph-based forensic search, and operational dashboards, security teams are able to respond to incidents up to 10-times faster.



FEATURED PRODUCT



Learn more about this product at <https://ambient.ai/product>

2022 **SIW SECURITY** INFOWATCH.COM®
READERS' CHOICE AWARDS™
HONORABLE MENTION



Alarm.com Business Activity Analytics (BAA)

Included with Alarm.com Pro Series business security cameras, Business Activity Analytics (BAA) provides commercial managers with insights on key performance indicators and real-time alerts to help ensure customer and employee safety. Analytics include occupancy tracking, people counting, heat mapping, crowd gathering detection, and queue monitoring.

Read more about the product and request more info at www.securityinfowatch.com/21278724

CATEGORY: Intrusion Detection & Perimeter Security

2022 **SIW SECURITY** INFOWATCH.COM®
READERS' CHOICE AWARDS™
★ **TOP PRODUCT** ★

Bosch Security Manager Mobile App

Designed to enhance working with Bosch intrusion control panels, the app features a simple, modern interface that allows users to control and manage their alarm systems, including arming and disarming, adding and deleting passcodes, reviewing event history, and managing push notifications. It uses Bosch's Remote Connect cloud service, which provides a secure, reliable IP or cellular connection without requiring special settings in the customers' network.



Read more about the product and request more info at www.securityinfowatch.com/21278799

2022 **SIW SECURITY** INFOWATCH.COM®
READERS' CHOICE AWARDS™
HONORABLE MENTION



Magos Systems SR-150 Radar

The SR-150 is a short-range, ground-based radar detection system that provides 150 meters of coverage, including up to 30 degrees of elevation coverage and 120 degrees of azimuth coverage. Using C-band frequency, the radar consumes less power than many other technologies.

Read more about the product and request more info at www.securityinfowatch.com/21272150

CATEGORY: Emergency Communications

2022 **SIW SECURITY** INFOWATCH.COM®
READERS' CHOICE AWARDS™
★ **TOP PRODUCT** ★

AtlasIED IP-APX Loudspeaker

The IP-APX constant directivity, PoE+-enabled loudspeaker features a high-output horn for clear, intelligible sound in any indoor or outdoor environment. The weather-resistant unit provides coverage in outdoor spaces where day-to-day communications and critical emergency notifications must be delivered with highly intelligible audio quality and coverage.



Read more about the product and request more info at www.securityinfowatch.com/21278755

2022 **SIW SECURITY** INFOWATCH.COM®
READERS' CHOICE AWARDS™
HONORABLE MENTION



IPVideo Corp.'s HALO IoT Smart Sensor 3C

The HALO IoT Smart Sensor 3C provides building health monitoring, indoor air quality monitoring, vape and THC detection, gunshot detection, emergency keyword and panic button alerting, two-way audio, motion detection, occupancy alerting, chemical alerting, VOC alerting, tamper alerting and more.

Read more about the product and request more info at www.securityinfowatch.com/21257613



Make it easy
for my team
to manage
projects



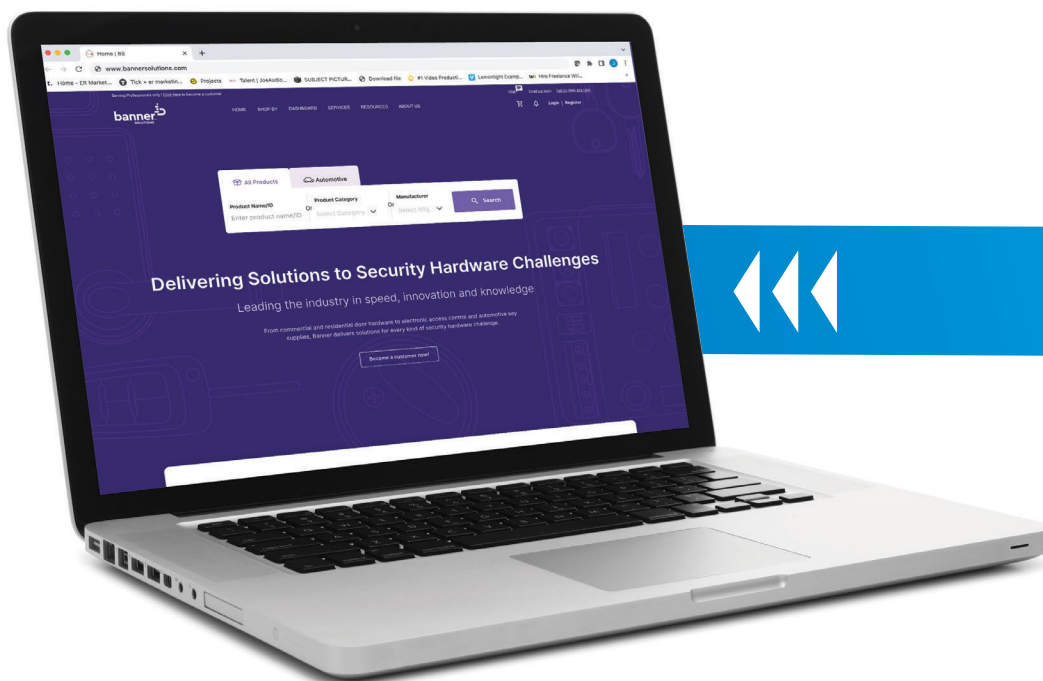
WE HEARD YOU

NEW

BANNERSOLUTIONS.COM

Find and compare products quickly, collaborate on projects effortlessly, and manage orders and invoices intuitively on our interactive dashboard.

WORKFLOW SIMPLIFIED



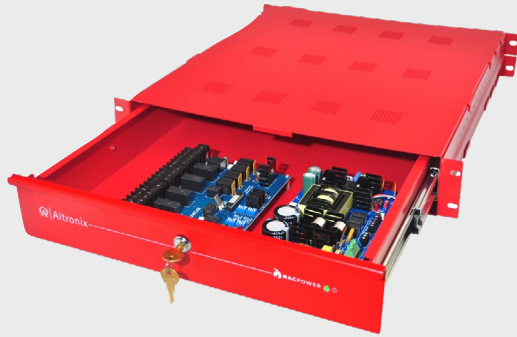
bannerTM
SOLUTIONS

Scan to visit our
new website



CATEGORY: Fire & Life Safety

2022 **SIW SECURITY**
INFOWATCH.COM®
READERS' CHOICE
AWARDS™
★ TOP PRODUCT ★



**Altronix
R1042ULADA
Rack-Mount NAC Power Extender**

Ideal for installations where wall space is limited or not an option, the rack-mount NAC Power Extenders provide system designers more flexibility when specifying fire alarm systems. A unique rack drawer increases capacity. It offers up to 4-Class A or 4-Class B NAC outputs and provides 24VDC at 10A and interface with virtually any fire alarm control panel (FACP) and synchronizes with Potter/Amseco, Gentex, System Sensor and CooperWheelock notification appliances.

Read more about the product and request more info at www.securityinfowatch.com/21278771

2022 **SIW SECURITY**
INFOWATCH.COM®
READERS' CHOICE
AWARDS™
HONORABLE MENTION

Telguard TG-7FE Fire Alarm Communicator

The TG-7FE is a dual-path internet and 5G LTE-M commercial fire communicator, fully compliant with all applicable UL and ULC standards in the U.S. and Canada. It operates on panel power (12/24V) or via plug-in transformer, and is available in AT&T or Verizon models.



Read more about the product and request more info at www.securityinfowatch.com/21278775

CATEGORY: Residential Security & Smart Home

2022 **SIW SECURITY**
INFOWATCH.COM®
READERS' CHOICE
AWARDS™
★ TOP PRODUCT ★



**Johnson Controls
IQ Panel 4**

The IQ Panel 4 delivers improved connectivity and reliability on LTE, Wi-Fi, Z Wave, Bluetooth, PowerG, and legacy security wireless. It also includes an integrated IoT processor from Qualcomm. The 7-inch HD touchscreen has an upgraded 8MP camera with flex-tilt to adjust camera angle for disarm photos, peek in, and alarm videos. Dual SRF featuring PowerG provides long range secure encrypted wireless.

Read more about the product and request more info at www.securityinfowatch.com/21231661

2022 **SIW SECURITY**
INFOWATCH.COM®
READERS' CHOICE
AWARDS™
HONORABLE MENTION

Amazon's Blink Video Doorbell

Amazon's Blink Video Doorbell features a 640x360 HD resolution camera and a wide field of view to see who's at the front door. Customers can view and record 1080p HD video during the day and infrared HD vision at night, all with a two-year battery life.



Read more about the product and request more info at www.securityinfowatch.com/21278794

2022 **SIW SECURITY**
INFOWATCH.COM®
READERS' CHOICE
AWARDS™
HONORABLE MENTION

Resideo ProSeries Smart Home Platform

Resideo's ProSeries platform is an integrated security system for residential and small business applications featuring Amazon Alexa built-in, smart home control from a single app, and easy expansion. Users can optionally arm and disarm the system from in-wall Brilliant Smart Home Control or via the Brilliant app.



Read more about the product and request more info at www.securityinfowatch.com/21261495

CATEGORY: Central Station Monitoring

2022 **SIW SECURITY**
INFOWATCH.COM®
READERS' CHOICE
AWARDS™
★ TOP PRODUCT ★



RGB Spectrum's Zio Mobile App

Deployed on any mobile device, Zio allows data to be pushed or pulled from an encoder, media server, video wall or desktop display and shared on a smartphone. Anyone can share relevant video and data with those out in the mobile workforce with one click. The mobile app is ideal for security operations centers, emergency communications centers, mobile dispatch, government agencies, public safety and more.

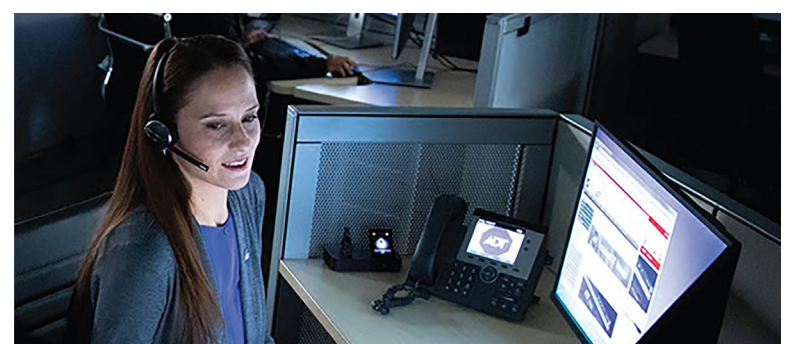
Read more about the product and request more info at www.securityinfowatch.com/21278765

2022 **SIW SECURITY**
INFOWATCH.COM®
READERS' CHOICE
AWARDS™
HONORABLE MENTION

ADT SMART Monitoring

To help better prioritize and reduce false alarms, ADT SMART (System Monitoring and Response Technology) Monitoring communicates more alarm details and thus helps dispatchers determine which type of support the customer needs. With SMART, alarms reach first responders eight times faster with a 52% reduction in false alarms.

Read more about the product and request more info at www.securityinfowatch.com/21278733



The Partner Pros Trust

Snap One is the one-stop shop for all your needs, combining pro feedback and expertise with high-quality products and reliable technical support to deliver exceptional smart solutions.

Price-Protected

We only sell to pros like you, which means you'll never get shopped by your customers.

Free Same Day Shipping

All orders over \$1,000 ship free, and Partner Rewards members get free shipping on every order.

Shop Locally

Visit one of our 35 stores across the U.S. for same-day products, demos, and in-person training opportunities.

High-Quality Products

Bringing you trusted brands in technology categories like audio, video, surveillance, control, networking, conferencing, and remote management.

Superior Service & Support

Reduce time in the field looking for answers with our library of support materials and trained technicians ready to take your call.

Brands You Trust

We manufacture and distribute preferred brands including:



Ready to become a Snap One Partner?
Visit snapav.com/security to learn more.



Request information: www.SecurityInfoWatch.com/21090092

CATEGORY: COVID-19 Mitigation

2022 **SIW SECURITY**
INFOWATCH.COM®
READERS' CHOICE
AWARDS™
★ **TOP PRODUCT** ★

Aiphone IX-DVM Video Intercom

The IX-DVM mullion-mount IP video door station is weather- and vandal-resistant and features a touchless sensor for gesture-activated calling. The "Hand Wave" touchless sensor provides a method to call inside a facility without needing to touch the exterior intercom. Mounting in spaces as thin as two inches, the station is equipped with a 720p HD wide dynamic range camera and programmable to call up to 20 different stations with three different call levels.

Read more about the product and request more info at www.securityinfowatch.com/21277603

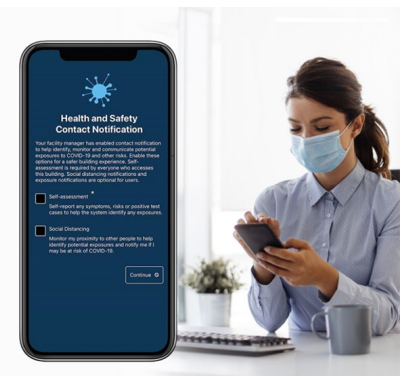


2022 **SIW SECURITY**
INFOWATCH.COM®
READERS' CHOICE
AWARDS™
HONORABLE MENTION

LenelS2 COVID-19 Contact Notification Service

The COVID-19 Contact Notification Service for organizations using LenelS2's OnGuard or NetBox access control security systems and BlueDiamond mobile credential app enables users to receive real-time social distancing reminders and anonymized notifications if they have recently come into contact with a user who self-assessed as being COVID-positive.

Read more about the product and request more info at www.securityinfowatch.com/21218363



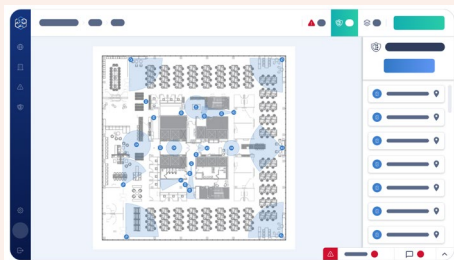
CATEGORY: Business Management Software & Solutions

2022 **SIW SECURITY**
INFOWATCH.COM®
READERS' CHOICE
AWARDS™
★ **TOP PRODUCT** ★

HiveWatch Security Fusion Platform

HiveWatch is a "Security Fusion Platform" that brings together data from disparate security systems and provides an intelligent, holistic, and actionable view. It consists of an intelligent operating system for an organization's physical security programs, which gives security leaders a central place to understand the performance of their security staff, technology, and customers, where they can execute quick reactions to incidents, resolve noisy events, and detect new threats.

Read more about the product and request more info at www.securityinfowatch.com/21278618

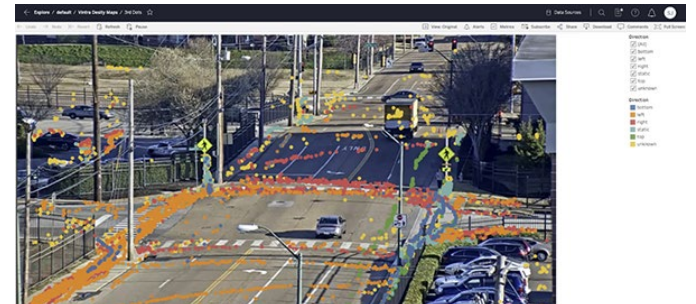


2022 **SIW SECURITY**
INFOWATCH.COM®
READERS' CHOICE
AWARDS™
HONORABLE MENTION

Vintra BI (Business Intelligence)

The Vintra BI module enables security leaders to leverage machine learning on video analytics metadata, resulting in valuable insights regarding such things as employee occupancy and usage, office traffic flows, employee safety and more.

Read more about the product and request more info at www.securityinfowatch.com/21277557



Be sure to bookmark

www.securityinfowatch.com/readerschoice

for updates regarding vendor submissions and reader voting for the 2023 SecurityInfoWatch Readers' Choice Awards.





Family owned since 1975

Full-service provider of residential, commercial, and multifamily architectural door hardware

One Source. One Order. One Solution.

Call **800-233-4210** or visit **www.topnotchinc.com** for all of your door hardware needs!



Top Notch checks all the boxes

- ✓ More Than 100 Top Brands In Stock and Ready To Ship
- ✓ Distribution Across The United States
- ✓ 99% Same-Day Shipping
- ✓ Best-In-Class Customer Service
- ✓ Full-Service Keying Department
- ✓ Project Estimating Team

Order Online at www.topnotchinc.com

Become an Online TND Customer

Have access to our entire inventory. View, renew, and edit past orders. Stay up to date with TND promos!

- Place Orders Online 24/7
- Check Available Inventory
- Track Order Status
- View Current Promotions
- Manage Your Account
- ♥ Favorite Your Frequently Purchased Products
- Process returns



Top Notch is a proud partner of:



Request information: www.SecurityInfoWatch.com/12129499



SPECTRE nano Reader from STid

SPECTRE nano is the most compact UHF and Bluetooth® reader on the market for vehicle and driver identification. Nano uses contactless technologies to expedite entry and exit from parking garages, fleet lots, or corporate campuses.

It can recognize either the driver, the vehicle, or both by using UHF windshield tags, a badge, or even the driver's Bluetooth smartphone with integration of the STid Mobile ID® ecosystem. These capabilities allow organizations to differentiate access control for vehicles and drivers with multiple profiles (e.g., visitors, employees, tenants). In addition, SPECTRE nano is housed in a durable, anti-vandal shell that is resistant to shock, heavy precipitation, vibration, dust, and even sea water. Maintenance is minimal, and no batteries are required.

SPECTRE nano offers the highest levels of security, using encryption methods recommended by independent security organizations such as ANSSI and FIPS. In addition, OSDP™ and SSCP® protocols provide secure end-to-end, bi-directional communication. Key storage is certified EAL5+. Encrypted and signed credentials prevent cloning, and managers have the capability to quickly erase security keys.

SPECTRE nano is easy to install, easy to use, and can interface with most existing access controllers. The shell can be customized with any branding. Simplify your security management and keep traffic moving.

<https://stid-security.com>

2022 **SIW** SECURITY INFOWATCH.COM®
READERS' CHOICE AWARDS™
HONORABLE MENTION



Request more information: www.securityinfowatch.com/21239240

Schlage Electronic Locks with HID Credential Support

At Schlage, we understand that customers value solutions that are open, interoperable and flexible. We offer three series of electronic locks that allow for expansion of access control deeper into the building while utilizing existing HID® credentials. The Si option on Schlage AD Series, NDE and LE electronic locks provide full support for the secure application area of HID iCLASS®, iCLASS SE®, Seos® and NFC mobile credentials as well as Schlage MIFARE® smart and mobile credentials. This interoperability gives our customers the freedom of choice when it comes to credential technologies.

Locks available with the Si option:

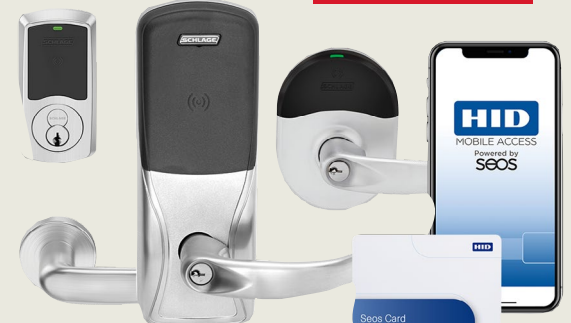
- NDEBSi mobile enabled wireless locks for cylindrical applications
- LEBSi mobile enabled wireless locks for mortise applications
- AD Series with Si or SiK reader for cylindrical, mortise or exit device applications

Electronic locks can be customized with a variety of lever designs, finishes and function to meet the needs of the opening. Schlage electronic locks have been integrated into leading physical access control systems through our PACS alliance program; features and capabilities will vary by provider.

<https://commercial.schlage.com>



2022 **SIW** SECURITY INFOWATCH.COM®
READERS' CHOICE AWARDS™
★ TOP PRODUCT ★



Request more information: www.securityinfowatch.com/21287203



Introducing the SALTO XS4 Original+

The XS4 Original+ is a universally compatible advanced smart locking system delivering next-generation access control technology in a market proven solution.

Featuring a sleek design, the XS4 Original+ is based on the same proven housing and mechanical mechanisms of the XS4 Original.

It can integrate all your physical security needs through wireless networked, easy to install, stand-alone locks giving you real-time access control for virtually all the doors in your building.

The XS4 Original+ solution is suitable for a wide range of customer applications. The broad range of different models and functions provide comprehensive electronic access control to virtually any door.

SALTO BLUEnet real-time functionality and SVN-Flex capability are pre-embedded, enabling SALTO stand-alone smart XS4 Original+ locks to update user credentials directly at the door.

It is compatible with the wide array of SALTO platform solutions, including SALTO Space data-on-card, SALTO KS Keys as a Service cloud-based access solution, and SALTO's Justin Mobile technology for digital keys. The XS4 Original+ also includes RFID Mifare DESFire, Bluetooth LE, and NFC technology functionality.

www.SALTO.us



Request more information: www.securityinfowatch.com/21245612

Retrofit Exit Devices from SDC

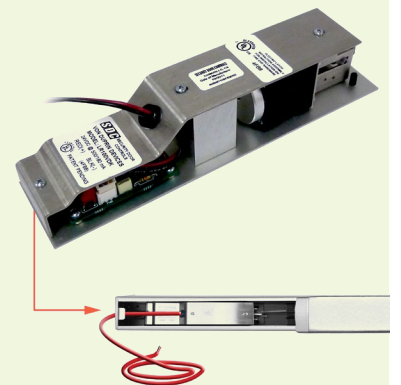
SDC's Quiet DUO™ LR 100 Electric Latch Retraction Kit enables electric access control and dogging of mechanical exit devices. When energized, the motor retracts the exit device latch and pulls the pushpad on most devices into the dogged (depressed) position, enabling momentary or sustained push and pull operation of the door.

It retrofits most major brands of mechanical exit devices, including: Adams Rite, Arrow, Best, Cal-Royal, Corbin Russwin, Design Hardware, Detex, Dorma, Dor-O-Matic, Falcon, Hager, IDC, K2, Jackson, Marks, Marshall Best, PDQ, PHI, Precision, Sargent, Schlage, SDC, Tell, Town Steel, Von Duprin and Yale. Retrofit exit devices with our proven concealed solution.

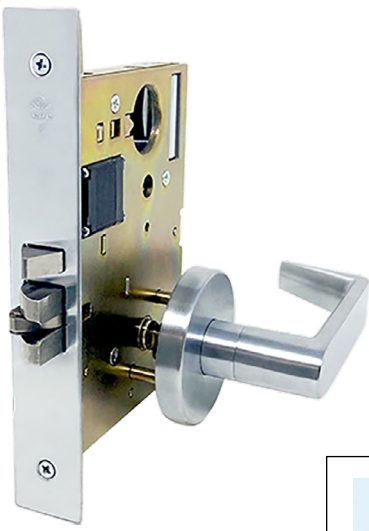
- Motorized Electric Latch Retraction & Dogging for Fire Rated & Non-Fire Rated Devices
- Retrofits select exit device brands without removing device from door
- Only Latch head cover and end cover plate removable required for most other brands
- Low 700mA Inrush, 200 mA Continuous @ 24VDC
- Quiet Mechanical and Electric Operation
- Eliminates need for costly replacement of existing exit device
- Significantly less labor and costs compared to competitive retrofit kits
- Eliminates need for costly power supplies with high inrush circuitry
- Compatible with UL Listed Access Control Power Supply
- Only 1 Amp SDC brand power supply required for up to 2 exit devices
- Low current enables longer wire runs with smaller gauge wire
- No door sequencers required for pairs of manual doors

For more information, call 1-800-413-8783 or visit the links below.

www.sdcsecurity.com/LR100-Kit



Request more information: www.securityinfowatch.com/10247238



Command Access LPM190 Motorized Latch Retraction Mortise Lock

The Command Access LPM190 series motorized latch retraction mortise lock utilizes a high-quality Grade 1 chassis built on the same footprint as the Schlage L9000 series and uses standard 'type 86' door prep. This remarkable modification opens the door to new possibilities on what can be achieved with a mortise lock, previously only possible with exit devices. It uses a CAT-designed custom motor assembly to maximize the pulling force and low surge, allowing long wire runs and a centralized power supply. It is the perfect solution for push-pull conditions, as well as handicap access where panic devices are unnecessary. Another industry first was our ability to add independent lever control for specialty applications like single-occupancy restrooms.

www.commandaccess.com
Request more information:
www.securityinfowatch.com/21287224

Cyberlock Blue Padlock



The CyberLock Blue padlock is a keyless security solution designed specifically for water, power, telecom and data center industries. The modern padlock design facilitates access control through Bluetooth-enabled devices, fobs or CyberKey smart keys. Users are granted scheduled or temporary access to the padlock via the Cyber Access app, available for Apple iOS and Google Android. The stainless steel and brass padlock is IP68-rated, which gives it the durability to work effectively in remote locations that experience severe environmental conditions.

Request more information:
www.securityinfowatch.com/21287296

HES Electric Strikes

HES is the leading manufacturer of electric strikes, electric strike accessories and cabinet locks. Known for quality and service, we develop innovative access control solutions and work to earn long-term relationships with distributors and installers, all based on the goal of delighting our valued customers. We have Versatile and durable electric strikes for cylindrical and mortise locks, and rim exits for every type of lockset, including outdoor rated products for perimeter doors that are UL 1034 listed, suitable for outdoor use.

<http://hesinnovations.com>
Request more information: www.securityinfowatch.com/10213861



Let Us Help You Secure the School Better
We've Been Creating Proven School Security Technology Solutions for Decades



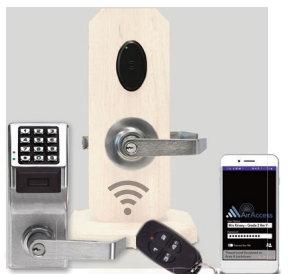
CLASSROOM LOCKS & LOCK-DOWN



DOOR-PROPPING ALARMS & MONITORING



SECURITY & FIRE ALARMS & REPORTING



WIRELESS NETWORKED ACCESS CONTROL



EMBEDDED & ENTERPRISE SYSTEMS W/ VISITOR MGT



ACTIVE SHOOTER DETECTION VIDEO & AUDIO



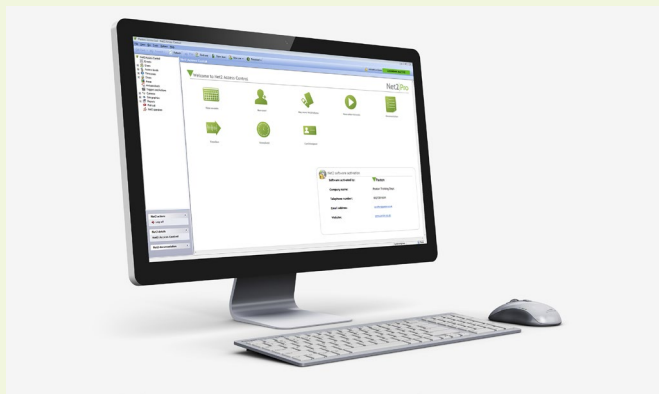
PASS K-12-Certified School Security Trainings Now Available from Napco



1.800.645.9445 | salesinfo@napcosecurity.com
www.savischool.com



Request Information: www.SecurityInfoWatch.com/10215125



Paxton Net2 Access Control Management System

Net2 is Paxton's user-friendly and flexible networked access control and video intercom system. The system is administered using one or more PCs and can be monitored and managed from a central location. Our door controllers come as IP, wireless or battery powered. Net2 access control is easy to install and designed to make the management of any building very simple. It offers various IP, battery powered, video intercom, and wireless or wired door controllers to suit any site requirement, ensuring your building runs smoothly and remains secure. Net2 is designed to be easily scalable, you can build your system one door at a time.

Apps for Net2

Paxton Connect for Net2 simplifies remote site management. The app combines a variety of features in one smart platform enabling you and your customers to manage multiple sites remotely from a smartphone, tablet or browser.



www.paxton-access.com/us/systems/net2

Request more information: www.securityinfowatch.com/21151316

STid Architect Multi-Technology Readers

STid's flagship Architect® series is the most-awarded range of access control readers. Intuitive and dynamic, the Architect series is made up of three interchangeable modules, three facades, and one arc (for tight spaces) that easily connect to an intelligent RFID core (Bluetooth® optional).



It offers the perfect blend of high security and upgradeability. The OSDP-certified readers use the latest MIFARE® DESFire® EV2 & EV3 contactless chips and public encryption algorithms (3DES, AES, RSA, SHA, and more), which are recommended by official data security agencies. Architect security readers are compatible with all access control cards, including 125 kHz, 13.56 MHz, NFC, and Bluetooth®.

The modular nature of Architect allows you to manage the security of your access points autonomously, reduces the number of parts needed by 40%, and facilitates future technological extensions, upgrades, and migrations.

Architect provides best-in-market data protection due to the patented, anti-tearing motion-sensor system and the ability to delete authentication keys. Data is encrypted with an EAL5+ certified crypto processor.

Unlike competing solutions, the reliability of the accelerometer-based technology prevents it from being outsmarted. The vandal-proof readers are designed to withstand harsh environments and can be personalized with your brand identity.



<https://stid-security.com/en/solutions-2/architect>

Request more information: www.securityinfowatch.com/21223727

Krieger Special Purpose Doors for Military and Government Buildings

Krieger's special purpose doors are custom-manufactured to protect personnel and property while meeting specialized hybrid performance requirements in U.S. military and government buildings.



Blast and Pressure Resistance Doors –

Krieger's blast-resistant doors meet UFC 4-010-01: DoD Minimum Antiterrorism Standards for Buildings, Anti-Terrorism Force Protection (ATFP), and industrial PIP standards to protect personnel and property from explosions and explosion-borne projectiles.

Doors with UL 752 Bullet Resistance –

Krieger's bullet-resistant doors protect personnel and property from small arms fire by meeting UL 752 Levels 1-10 and N.I.J. Levels I, IIA, II, IIIA, III, and IV. Ballistic standards comply with MIL-SAMIT Parts 1 and 2. All Krieger door assemblies are available in manual or power-operated as needed.

New! Radio Frequency/Acoustical Hybrid Door –

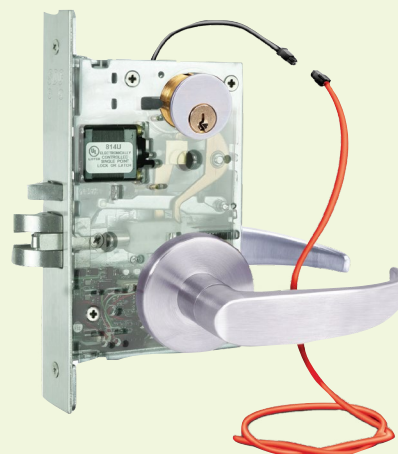
Krieger now offers a unique hybrid door with 40 dB radio frequency (RF) protection and an STC 51 acoustical rating—all in a standard 1 1/4" thick door panel. The thinner design makes it an ideal choice for any new or existing construction where RF and acoustical ratings are required. Krieger has a long history of providing SCIF and RF door combinations for military and government installations, including the Pentagon. SCIF door assemblies are rated up to STC 55 and RF shielding meets TEMPEST and IEEE 299 standards.

www.KriegerProducts.com



Request more information: www.securityinfowatch.com/21246788

MLR Z7600 Motorized Latch Retraction Mortise Locksets from SDC



SDC's MLR Z7600 Series Mortise Locksets are designed for the access control of openings in commercial, industrial and institutional facilities where code compliance, dependable operation and resistance to physical abuse is required. Ideal for automatic door operator applications, they replace most major brand mechanical locks in new or retrofit applications. MLR Mortise Locksets ensure the door stays latched even when unlocked, perfect for use on fire rated doors to maintain code compliance.

FEATURES

- Motorized low current operation 620mA inrush, 160 mA holding force @ 24VDC
- SDC Fully Featured Lockset with Complete Application Flexibility for New Construction or Retrofit of Major Brand Mechanical Locks
- New or Retrofit Application, Replaces Most Mechanical Locks
- Field Selectable Handing
- Order with SDC Trim or Less Trim. Compatible with Schlage Trim Provided by Others
- Key Cylinder Latch Retraction
- Full Monitoring Capability (Optional)
- Request-to-Exit, SPDT
- MC-4 Door Contact
- Latchbolt Status, SPDT

Visit the links below or call 1-800-413-8783.

www.sdcsecurity.com/Z7600



Request more information: www.securityinfowatch.com/12400315



YD30S Pedestrian Door Lock from BQT Solutions

The YD30S from BQT Solutions, also known as the Cobalt Single, is an advanced low-voltage, motor-driven door lock for pedestrian doors. Designed to secure single-acting doors, it resolves the two biggest issues in door lock-

ing: the ability to align a misaligned door and the ability to release when requested, even with pre-load load on the door.

The unit seamlessly integrates into access control systems and can be mortice- or surface-mounted, making it ideal for use on glass doors. Made to exacting standards with full monitoring.

Request more information:

www.securityinfowatch.com/21277438



Suprema BioStation 3 Contactless Access Control Terminal

Suprema BioStation 3 is a contactless access control terminal specialized for facial recognition in the post-COVID era. In addition to facial recognition, various other contactless credential options are offered to enhance user convenience, including QR codes, barcodes, mobile access cards and RFID cards. It features a compact, slim body that is reduced in size by 47% compared to its predecessor, FaceStation F2, allowing for easy installation on any door, from small offices to enterprise environments. A Neural Processing Unit (NPU) enhances facial authentication performance.

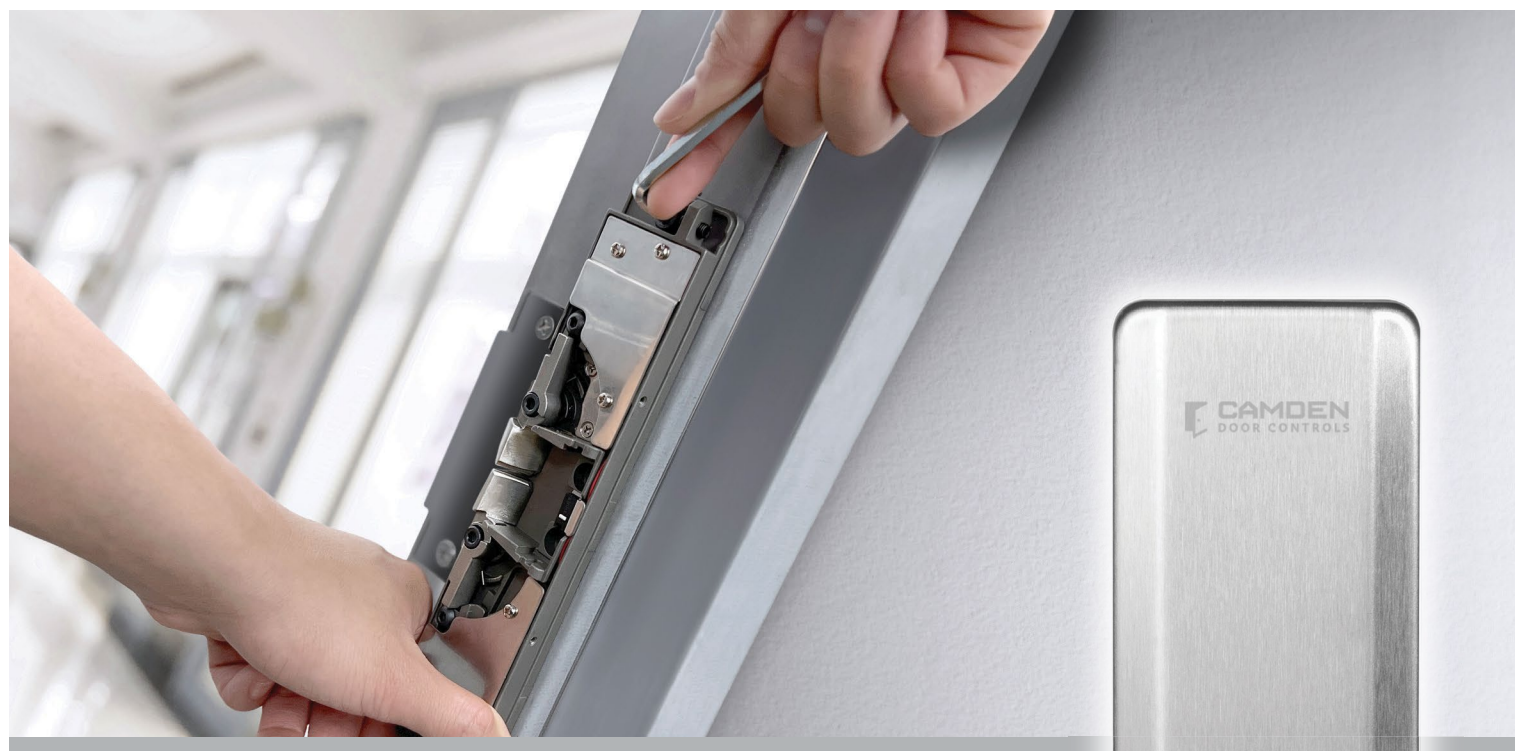
Request more information:

www.securityinfowatch.com/21285833

Adams Rite Provides Versatile Solutions for Narrow Stile Aluminum Openings

Adams Rite is the Aluminum Hardware Authority, specializing in door and door hardware solutions for narrow stile aluminum applications. From electromechanical deadlocks and dead-latches to preload capable electric strikes and electrified exit devices and trim, Adams Rite offers practical and quality code-compliant solutions for retrofitting and upgrading interior and exterior aluminum and glass openings, adding access control to improve the safety and security of your business. Our products are available in multiple finish options to match almost any frame creating a sleek, aesthetic look. Find solutions for narrow stile aluminum openings on our website or follow Adams Rite on LinkedIn and Facebook.

www.adamsrite.com Request more information: www.securityinfowatch.com/10212663



FINALLY, A RIM STRIKE DESIGNED FOR EVERY INSTALLER!

Whether you've installed a hundred RIM strikes or just one, Camden's remarkable preload strike is designed to get you off the job faster and can even avoid future service calls!

The patented design of CX-EPD1289L RIM strikes will release with up to 15lbs. of preload pressure, caused by differences in air pressure, inexact installation, or misaligned doors (during or after installation).

Features:

- Patented Preload Feature, up to 15lbs.
- UL Security and 3Hr. UL Fire Listings
- 3/4" Latch Projection
- Grade 1 'Universal' 12/24V, AC/DC, Fail Safe/Fail Secure
- Included Latch Monitor
- Metal Marking Jig Included

Contact us for more information or to request a product demonstration today!



Opening New Doors to Innovation, Quality and Support!
1.877.226.3369 / 905.366.3377 | camdencontrols.com

Request information: www.SecurityInfoWatch.com/10213140



CX-EPD1289L



School Security Solutions from NAPCO Security Technologies

Napco Security Technologies has been creating proven school security and access control technology solutions for decades, helping protect some of the country's largest K-12 school systems, and the best-known, most prestigious higher-education institutions.



As a security-dedicated manufacturer, we offer a full range of solutions for every application and budget, used alone or integrated campus-wide: From easy-retrofit classroom locks that lock-down with a key from safely inside a room, to advanced PIN/ID electronic access locks that lock-down using remote staff keyfobs or across campus in seconds using a wireless network activated from any one lock, mobile phone or the main server.

NAPCO also offers cloud-/cell-/web-browser-based access systems, or full security management and enterprise solutions, integrating locks, video, alarms, mobile/BT credentials, cell/IP communications, access control, threat-level and visitor management, scalable from a few doors to thousands, spanning multiple buildings or sites.

Napco is an ISO9001:2000 certified manufacturer of quality products engineered to exceed industry standards; to be long lived and feature the lowest total cost of ownership and the industry's longest warranties.

As part of its campus security initiative, Napco is a PASS Partner (Partner Alliance for Safer Schools), offering comprehensive school security guideline trainings, and creator of SAVI™ (School Access-Control Vulnerability Index™) an objective self-audit tool to assess current security and identify vulnerabilities for phased improvement. For more, see NAPCO's solutions microsite at the link below.

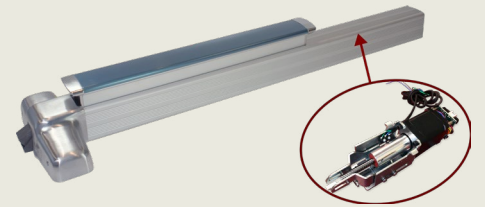
www.savischool.com



Request more information: www.securityinfowatch.com/21287181

Motorized Latch Retraction Kits (MLRK1) from Command Access

Instead of going for the one-size-fits-all approach, Command Access worked on designing its Motorized Latch Retraction Kits (MLRK1) to work specifically with a particular manufacturer's exit device to maximize pull force and longevity.



It enables true electronic dogging, meaning the push pad is retracted along with the latch/latches. They are rated for continuous duty and are backed by our no-hassle warranty.

Our motor modules (MMS) are standardized across the line, from the specs to the troubleshooting, making it much easier for installers who work with multiple manufacturers' products. They are equipped with built-in audible diagnostics and push-to-set technology for easy post-installation adjustment of the latch/latches without disassembling the exit device.

Lower in-rush and long wire runs enable the installer to place the locking hardware power supply in a centralized location. Along with electronic dogging, an anti-tampering function notifies if the push pad is pulled from the dogged position.

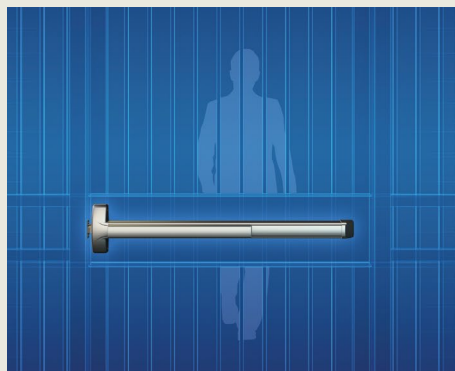
We have built an extensive library of installation videos that walk you through each kit's installation, capped off with a celebratory dance move. All our kits are blessed by UL as an add-on accessory, meaning any device it is installed into will maintain all their listings. Next time you encounter an exit device that needs an upgrade, think Command Access MLRK1.

www.commandaccess.com



Request more information: www.securityinfowatch.com/21125167

Weatherized Latch Retraction Exit Device from Detex



The Detex Advantex Latch Retraction Exit device (ER EX) is now available in a weatherized option. The weatherized latch retraction (ER EX W) exit device is a great option for outdoor access control application where a panic exit device is required.

Perfect for outdoor gates in amusement parks, garden centers, lumber yards, courtyards, and other exterior applications as well as interior applications that get wet, the Advantex Latch Retraction can be configured for single and pairs of doors. Detex also offers gate plates with adjustable strike locators, allowing exit devices to be custom fit to just about any gate application. Detex's Advantex weatherized latch retraction exit device is just the newest addition to the proven list of Detex weatherized door alarms, weatherized exit control locks, weatherized exit devices, weatherized delayed egress and weatherized guard tour products.

For more than a century, Detex has earned the trust of architects and owners who rely on Detex products for the life safety and security of people and property. A USA company, Detex designs, manufactures, markets and ships products from New Braunfels, Texas. Detex Corporation is known internationally for life safety and security door hardware, loss prevention and architectural hardware, integrated door security systems, and guard tour verification.

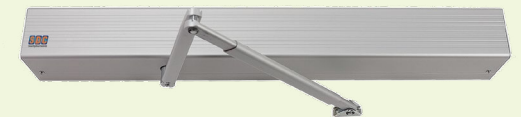
www.detex.com



Request more information: www.securityinfowatch.com/21265068

SDC Auto EntryControl Low Energy Swing Door Operator

SDC's Auto EntryControl™ Low Energy Swing Door Operator features a powerful, 1-Amp+, 24VDC internal power supply for true plug-and-play integration



with popular access and egress control system components. It provides hands-free, low-power point of entry door control to help meet all U.S. and Canadian ADA requirements for door installations in retail storefronts, office buildings, campuses and healthcare facilities.

The state-of-the-art microprocessor-based unit is self-tuning and self-learning while offering non-handed operation, full mechanical stops and a variety of interface options for sensors, push-plates, fire alarms and electrified locks.

Now you can integrate a Low Energy Swing Door operator with electric latch retraction exit devices, electric strikes and other electric locking systems without adding an extra power supply.

- Meets ANSI standard for ADA Compliance
- 1-Amp+ Accessory/Lock Power Supply
- Knowing act to activate
- 120v, low energy, Quiet!
- Specify push or pull arm
- Spindle included
- Slotted back-plate for easy mounting
- One button programming
- Auto-senses degree of door swing
- Hard stops adjustable (if needed)
- On-board 24v output & sequencer for mags/strikes
- Auto IR, presence sensor (not activation)
- Easy add power for wireless controls
- Order with SDC brand ADA switches & bollards



Find out more at the links below or call 1-800-413-8783.

www.sdcsec.com/AutoOperator

Request more information: www.securityinfowatch.com/12303863



Securitron: Premier Supplier of Electromagnetic Locking Solutions

From durable and intelligent to delayed egress and specialty magnets, when you choose a Securitron Magnalock® you get quality solutions for high traffic and high security applications plus our industry leading MagnaCare® lifetime replacement, no-fault, no-questions asked warranty. The intelligent and sustainable Magnalocks combine security, style, and convenience with up to 80% energy reduction. Delayed Egress Magnalocks are for applications meant to prevent peril or property loss to persons and businesses. Follow Securitron on LinkedIn and Facebook.

www.securitron.com Request more information: www.securityinfowatch.com/10214963



Alarm Controls: Opening the Door to Affordable Access Control

Alarm Controls is your one-stop-shop for access control solutions at an exceptional value. Our offering of electromechanical products range from maglocks and accessories to push buttons and request to exit stations to specialty products for securing hazardous locations and supporting emergency panic stations. Our custom solutions program specializes in creating unique and versatile designs to meet your specific needs. From the perimeter of your property to the interior openings, Alarm Controls offers a full line of affordable access control products to fit every need and secure and control your opening, while maintaining a high level of customer service, quality and short lead times. From front gate to front desk, we have your solution. Visit us online or follow us on LinkedIn and Facebook.

www.alarmscontrols.com

Request more information:

www.securityinfowatch.com/10212738



Single Door Access Controller from Gallagher

Gallagher's C7000 Single Door Controllers support a distributed access control architecture and combine the localized assurance of a door access decision with the ability to scale in numbers to support the largest enterprise systems. The door controller can use existing structured cabling and network Power over Ethernet (PoE)+ powering and UPS backup, lowering cost on security system installation. The device removes the need for power supplies, batteries, cabinets, and long expensive cable runs. It is designed to simply plug into the ethernet and sit discretely on the wall above the door or in the ceiling space.

Request more information:

www.securityinfowatch.com/21285670

REVOLUTION

ADAMS RITE
ASSA ABLOY

ADAMS RITE
ASSA ABLOY

- RETROFIT COMPATIBILITY with MS® prepped doors
- BATTERY OPERATED No power transfers or wiring required
- FLEXIBLE WIRELESS connectivity with existing access control systems
- LOW ENERGY Motorized EcoLatch® Technology

ADAMS RITE DL100

The DL100 Wireless Deadlatch with Aperio® technology is the most affordable retrofit solution for any aluminum stile door with an existing MS® door prep. DL100 uses low energy motorized EcoLatch® technology for silent operation and supports HID multiCLASS SE and NFC/BLE mobile access card technologies.

adamsrite.com

Request information: www.SecurityInfoWatch.com/10212663

2022 **SW SECURITY** READERS' CHOICE AWARDS. HONORABLE MENTION

Adams Rite
ASSA ABLOY

Experience a safer and more open world

DoorKing Model 1620 Lane Barrier System

The DoorKing Model 1620 Lane Barrier System is ideal in applications where a higher degree of vehicle traffic control is desired, but without the expense of deep excavation that is typically required for the installation of bollards, wedges or crash beams.

The 1620 can be surface mounted, making it an ideal choice for installation in multi-level parking garages, apartment communities, gated condominiums, parking lots and toll booths. The lane barrier uses a simple counter-balanced mechanical linkage to the companion 1603-580 operator. This counter-balanced system eliminates the need for hydraulics making the system environmentally friendly.

The system is fast acting, raising the steel barrier in approximately 2.5 seconds. LEDs and a signal light remain red until the steel barrier is in the full down position and the signal arm is in the full up position, at which time the LEDs turn to green for safe passage.

The barrier system consists of heavy-duty steel anchorages mounted on each side of the traffic lane and a steel barrier with a nylon strap rated at 22,000 lbs. holding force imbedded within it.

This Lane Barrier System is not crash rated. It is intended to provide a formidable barrier to help prevent passenger vehicles and light-duty trucks from driving through a controlled traffic lane at speeds up to 20 mph.

www.doorking.com/traffic-control/1620-lane-barrier



Request more information: www.securityinfowatch.com/21265080

FLIR FH-Series ID Multi-Spectral Camera

2022 SIW SECURITY INFOWATCH.COM®
READERS' CHOICE AWARDS™
HONORABLE MENTION

The FLIR FH-Series ID combines a full resolution thermal sensor with <30 mK sensitivity and a 4K optical imager into a single camera, enabling critical infrastructure users to get an assessment of threats at the same time as detection.

Bringing both sensors under one housing simplifies installation and reduces infrastructure and project expenses, as only one IP address and cable connection are needed, making the FH-Series ID an attractive option for system integrators.

A key pain point for customers deploying perimeter security cameras is false alarms. Unlike motion-based alarms, which are more susceptible to nuisance alerts, the FH-Series ID addresses this challenge by incorporating FLIR Virtual Barrier video analytics that are based on convolutional neural networks (CNN analytics).

AI-driven with built-in Virtual Barrier Analytics, the FH-Series ID accurately detects and classifies human and vehicle threats moving at high or low speeds, minimizing false alarms and daily operations costs. Custom scheduling enables security operators to set intrusion analytics to run on visible streams during the day and thermal streams throughout the night, optimizing coverage for any lighting.

These analytics have been shown to reduce false alarms by 60% in a sample of 100 unique scenarios, including noise motion from shaking trees, animals that trigger as humans or vehicles, rapid changes in the cameras AGC, flat field correction events, as well as a shaking camera.

www.flir.com/products/fh-series-id



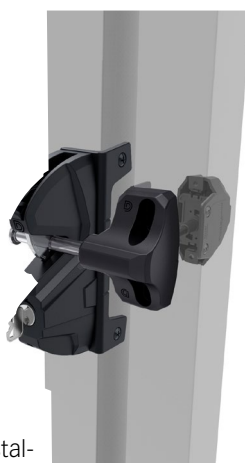
Request more information: www.securityinfowatch.com/21287250

LokkLatch DELUXE Series 3 Gate Latch from D&D

The new LokkLatch® DELUXE Series 3 is a premium privacy and security gate latch with external access that operates and locks from both sides of the gate. The innovative, patent-pending mounting bracket acts as a drill template for simple and quick installation. A revolutionary, snap-fit connector rod provides a quick and secure connection to the external access button for an easy installation. Constructed of industrial-strength polymer and stainless steel components it is durable and will not rust or corrode. Vertically and horizontally adjustable during and after installation for gate movement. Manufactured by D&D Technologies, the world's most trusted gate hardware.

<https://us.ddtech.com>

Request more information: www.securityinfowatch.com/21287230



Boon Edam Turnlock Full-Height Turnstiles

BE Secure is an overhead detection system that prevents piggybacking when using Boon Edam Turnlock Full Height Turnstiles. Using Time-of-Flight measurement principles (TOF) combined with artificial intelligence (AI) algorithms, BE Secure enhances the safety and security of any facility that is using full height turnstiles. BE Secure is available in several finishes to complement your new or existing equipment and is available as a factory supplied option or a field retrofit kit for the Turnlock 100 and the Turnlock 150, or as a factory "special request" on new Turnlock 200 models.

Request more information: www.securityinfowatch.com/21277555



HySecurity StrongSlide Crash-Rated Slide Gate

The StrongSlide M30 Hostile Vehicle Mitigation (HVM) Gate is an all-in-one steel frame, bottom-track cantilever crash-rated gate plus operator and barrier solution that includes streamlined installation and accessible servicing. The lightweight arrestor design keeps weight off the gate to reduce wear and improve reliability and service life. A unified mounting template locates and aligns gate rollers, support posts and arrestor catch bollards for more efficient installation. The gate achieved an M30 P1 rating and has a 24-foot clear opening.

Request more information: www.securityinfowatch.com/21280593



Magnasphere MACS-S3H Fence Climb Detection Sensor

Magnasphere's MACS-S3H fence climb detection sensor for rigid, semi-rigid and chain-link fences is housed in a polymer case with fiberglass, creating a compact and stylish design that blends in aesthetically. Its special design enables quick installation with a single central screw and fixing plate on various types of fences. The sensors are pre-wired and completely potted in the factory, guaranteeing IP68 protection and minimal installation times. The special internal design of the sensor casing offers optimal resistance to cable strain, while affording strength and reliability of the system itself. The system is compatible with two sensor buses each, for a maximum of 120 sensors.

Request more information: www.securityinfowatch.com/21282379



MAKE ROOM!

NOW... MORE CHANNELS OF POWER DISTRIBUTION – by ALTRONIX



Introducing **ACMS12(CB)** 12-Output Access Power Controllers with Fire Alarm Interface, and **PDS16(CB)** 16-Output Power Distribution Modules.

These new stackable sub-assemblies further increase access control capacity when integrated with Altronix Trove Series or virtually any wall/rack mount application - reducing overall equipment and installation costs.

Both feature dual inputs providing selectable 12 or 24VDC from any output with bi-color voltage LEDs for visual identification.



YOUR LEADER IN POWER | BACKED BY A LIFETIME WARRANTY

Request information: www.SecurityInfoWatch.com/10212790



STid Mobile ID Mobile Access Control Solution

STid Mobile ID® enables the issuance of virtual access cards onto users' mobile devices. Secure by design, Mobile ID is built for organizations with the highest of security needs. STid uses public RGS-compliant algorithms to encrypt and authenticate data in the application with unique user keys that are not stored in the application.

STid Mobile ID significantly reduces costs by enabling companies to create, deliver, and revoke virtual cards with just one click. Virtual cards can be customized with any brand identity. The solution can

run on a business's private network and integrates with existing systems via API. All protocols are supported, including SSCP®, OSDPTM, TTL Data Clock and Wiegand. Configuring STid Mobile ID is fast and does not require on-site software. No additional programming is required.

One reader can be configured to three different security levels:

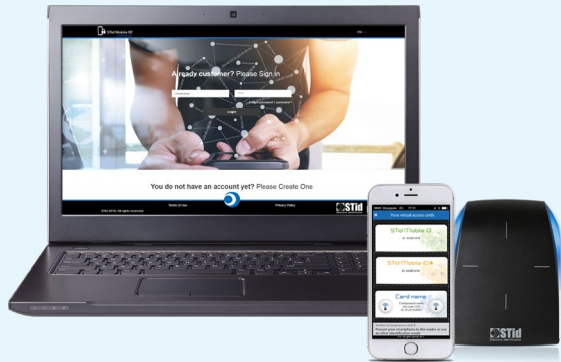
- What I have – a badge on a locked smartphone
- What I know – a badge on a smartphone unlocked with a PIN or other code
- Who I am – a badge on a smartphone unlocked with biometrics

Virtual cards can be issued in combination with conventional cards since the majority of card technologies are supported, including MIFARE® Classic, DESFire®, and most proximity cards (125 kHz). The STid Mobile ID app is available in the Apple Store and Google Play Store free of charge and can operate on Apple Watch.



<https://stid-security.com/en/solutions-2/stid-mobile-id>

Request more information: www.securityinfowatch.com/12266354



Crescendo C2300 Cards from HID Global

Crescendo C2300 from HID Global provides organizations with seamless and secure employee authentication, ensuring that only authorized people can access sensitive information. Enabling organizations to implement Zero Trust security architecture, it can be used as a corporate badge that protects access to facilities as well as a means to protect access to digital enterprise resources. It is designed to be easy and fast to deploy while adapting to continuously evolving security needs thanks to proven standards such as FIDO2 and PKI, data encryption allows only authorized users to access sensitive information.

Request more information: www.securityinfowatch.com/21268566

Retransfer Card Printer from IDP Americas

The IDP SMART-81 is a new generation Retransfer Card Printer that features innovative retransfer heating technology: Rapid Retransfer Printing (RRP), providing the fastest "Ready to Print" metric. No more waiting for several minutes for a retransfer printer to heat up. RRP technology offers "Power On" and "Ready to Print" in only seconds. The printer produces high-quality, sharp-looking images and meets the requirements of high-security applications such as instant bank card issuance. The input card hopper holds 200 cards, and a physical security locking features allow the user to easily secure the printer, supplies, and ejected cards.



Request more information: www.securityinfowatch.com/21277571



Freedom of choice

Schlage electronic locks with the Si option deliver interoperability with full support of HID iCLASS®, iCLASS SE®, Seos® and NFC mobile as well as Schlage MIFARE® smart and mobile.

commercial.schlage.com

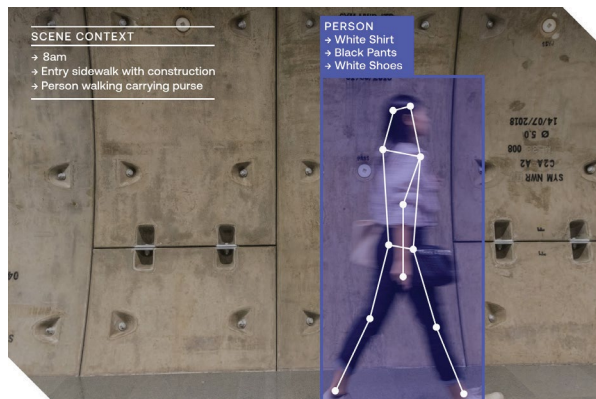
© 2022 Allegion PLC



Request information: www.SecurityInfoWatch.com/11248017



Transforming Physical Security with AI and Computer Vision



See how you can move from reactive to proactive. Visit www.ambient.ai

Request information: www.SecurityInfoWatch.com/21262217



Brivo Unified Credential

Brivo Unified Credential is a cross-platform smart credential compatible with select wireless locks and Brivo Smart Readers to improve security while leveraging existing door locks and devices. It enables property owners and managers to issue a single keycard or fob that operates with Brivo Smart Readers, select Schlage locks, and battery-powered Aperio locks from ASSA ABLOY. Putting an end to insecure proximity cards, property managers and owners can use the credential when they also need the flexibility and convenience to leverage existing credentialed door locks and devices.

Request more information: www.securityinfowatch.com/21266784



WattBox Power Supplies from Snap One

WattBox is designed to revolutionize the way you think about power solutions. WattBox delivers every form factor you can imagine, featuring a robust lineup of IP and traditional power conditioners, surge protection devices, uninterruptible power supplies, and a suite of accessories to help you complete the job. WattBox is built on a hardware platform of professional-grade surge protection and the OvrC remote management platform. Using OvrC, WattBox allows integrators to remotely reboot devices, modify configurations, and update firmware without rolling a truck. It even notifies you if a WattBox goes offline or its voltage falls outside a safe range. Every job needs power, so every install needs WattBox.

www.snapav.com/shop/en/snapav/wattbox

Request more information: www.securityinfowatch.com/21090093



PowerPipe Distribution Cables from Reme Wire

Suitable for indoor and outdoor digital electricity applications such as PoE, LED lighting systems and security cameras, Reme Wire & Cable's new Activate line of PowerPipe copper multipair and hybrid copper/fiber Distribution Cables provide a Class 4 fault-managed power solution for distributed electronics requiring long distance runs. The cables were designed to meet the new NEC Class 4 classification standard for fault-managed power systems. They combine the convenience and safety of low-voltage cables with the power and distance capabilities of traditional AC distribution. It delivers nearly 20 times the power of PoE over hundreds of meters, while using low-voltage pathways and wiring practices.

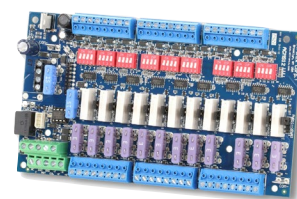
Request more information: www.securityinfowatch.com/21275341

Access Control and Power Distribution Sub-Assemblies from Altronix

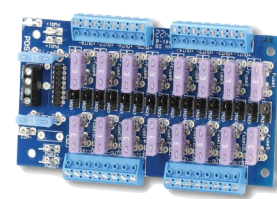
Altronix ACMS12 Access Power Controllers and PDS16 Power Distribution

Modules accommodate exponentially larger systems incorporating more doors and devices with a more compact footprint. The ACMS12 features dual inputs allowing power to be steered from two independent 5 to 24VDC power sources distributed over 12 independently selectable Fail-safe/Fail-secure power outputs. Fire alarm disconnect is selectable by output. The PDS16 also features dual inputs and is designed to steer AC or DC over 16 power outputs. Both models feature bi-color LEDs which indicate the voltage each output is providing and can be ordered with fused or PTC protected outputs. Altronix products are NDAA and TAA compliant and carry a lifetime warranty.

www.altronix.com Request more information: www.securityinfowatch.com/21276090



ACMS12



PDS16

WHAT !F

SMART SECURITY

gave you more freedom

to focus on what

matters most!?



BOBBY MCGRILL
CSO (CHIEF SUPERGRILL OFFICER)

Born from an ambition to create the ultimate user experience, STid combines best-in-class identification technology with human ingenuity.



ARCHITECT®

The world's most awarded range of OSDPT™-verified access control readers.



STID MOBILE ID®

Virtual access cards on smartphones for simplified security.



SPECTRE AND SPECTRE NANO

Automobile security readers that can identify by vehicle, driver, or both.

Find out more
www.stid-security.com

Request information: www.SecurityInfoWatch.com/12266353



SMARTER SECURITY ANSWERS

Trine's 4850ITL Electric Strike Installation Tool

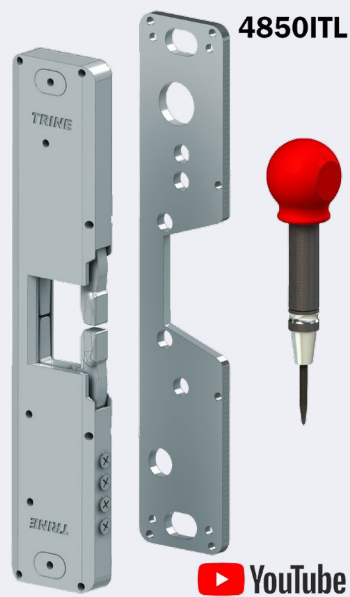
Trine Access Technology has developed the ultimate tool for installing electric strikes used with rim panic devices. As with all Axion strikes from Trine, this tool was designed to install the entire 4800 series line of strikes quickly and accurately the first time making the best installation available today.

The 4850ITL is not just a template, it is made from actual production parts, giving the installer the ability to adjust for common door issues such as sagging and misalignment. By placing the ITL on the frame, it allows the installer to "feel" the strike working with the door and panic device allowing for fine adjustments before holes are drilled.

The flexibility and therefore accuracy of the 4850-ITL is derived from our patent pending magnetic holding system built into the body of the tool.

Combine this with a custom center punch that is included with every 4850-ITL used to make perfectly centered marks on the frame, this tool is a must for every installer of electric strikes. See the video by searching "4850ITL" on YouTube!

www.trineonline.com



Request more information: www.securityinfowatch.com/11416079

ANSI-ITL for the Best and Easiest Installation of Trine Electric Strikes

Trine's ANSI-ITL is the best way to install both 4-7/8" and 2-3/4" Trine Electric Strikes. Lean and efficient, it utilizes only two pieces each (screwed together) for the 4-7/8" and 2-3/4" cutouts, which means fewer lost parts.

The Installation tool can be used with the 4100, 4100DBDL, 4200, EN400, EN435, EN430 electric strikes as well as 478, 478X, 234, and 234X installations on the 3000 series.

Adjustments on the installation tool allow for installation even on the

lower cutout of the Schlage L series – for use with the 4100 and 4100 DBDL. Additionally, the

tool includes a scribe pen for accurately marking the cut-out lines on the frame. Two mounting screws for the tool is also included.

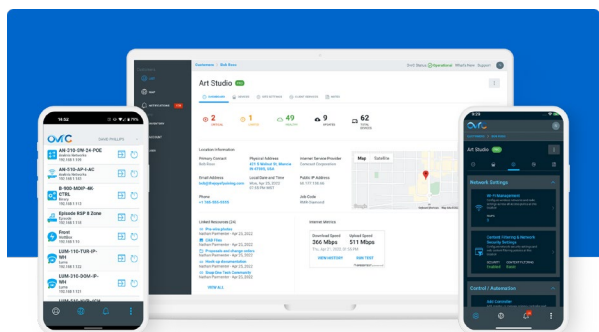
Please note the ANSI-ITL replaces the older 478-ANSI-ITL model number.

The ANSI-ITL is fast, easy, and accurate.

Ask your distributor how you can get yours today.

www.trineonline.com

Request more information: www.securityinfowatch.com/12385102ww



OvrC Remote Management and Monitoring Platform from Snap One

OvrC is a free, cloud-based remote management platform available exclusively to Snap One Partners. OvrC empowers you to troubleshoot and update devices remotely, helping you deliver support and generate recurring revenues. This tool is available on desktop and mobile, allowing you to access your clients' sites in the office or on the go. With OvrC, you can set up real-time notifications and troubleshoot common issues before your clients realize there's a problem. Many troubleshooting calls are resolved with a simple power cycle, so save yourself a truck roll and use OvrC to remotely reboot compatible devices. Get your free OvrC account with Snap One and you can deploy a proactive approach, providing world-class customer service and technical support without rolling a truck.

www.snapav.com/shop/en/snapav/ovrc

Request more information:

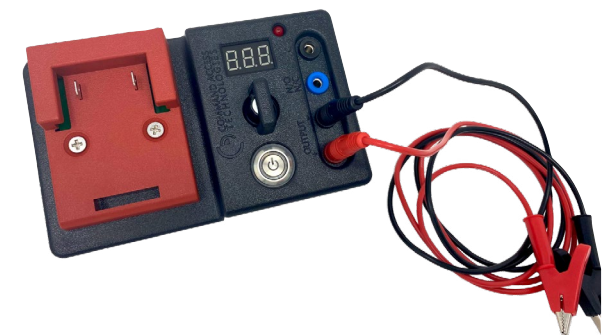
www.securityinfowatch.com/21139063

Platinum Tools Digital Tone and Probe Kit

The TDG310K1C Digital Tone and Probe Kit from Platinum Tools allows tracing and locating of single or bundled cables that are connected to unpowered or active networks such as phone lines, network cables or coax cables. Its built-in test functions can verify proper termination of network cables or test for shorts in the single-ended test mode. Other features include: Audible and visual signal strength indicators; built-in testing of RJ45 terminations; and built-in high-intensity flashlight.

Request more information:

www.securityinfowatch.com/21281590



CAT Field Tester from Command Access

The CAT Field Tester from Command Access is a light-weight, portable power source for field-testing mortise and cylindrical locks, motorized and solenoid-driven exit devices, electric strikes, etc., that require 12-24VDC voltage. It uses a cordless drill battery (DeWalt, Milwaukee, Makita) as its power source and comes equipped with a voltage adjustment dial to crank up or down the voltage to match your needs. It also includes a continuity tester and LED for testing switches and power transfers. It is the perfect tool for installers working on electrified hardware who must confirm if it works correctly after installation; or, a great way to troubleshoot when hardware is not working correctly by diagnosing product, power supply, or access control issues quickly.

www.commandaccess.com/power-supplies/cat-field-tester

Request more information:

www.securityinfowatch.com/21287221



Emergency Keys from STRATTEC

New for 2023, STRATTEC is introducing five new emergency keys to our existing offering. Now available through our distribution network, the back-up keys include two new GM offerings and three new offerings for Chrysler/Dodge/Jeep keys. To see the specific applications and download the brochure for these back-up keys, visit the links below, and don't forget to use our new and improved Vehicle Match function.

<http://aftermarket.strattec.com>

Request more information: www.locksmithledger.com/21287243



Traka Touch Pro Key Cabinets

Traka's new Touch Pro series of intelligent key cabinets, available for purchase January 2023, will come in four sizes to suit customer demand and builds upon the strong foundations of its predecessor, Traka Touch. New mechanical design elements enhance the security, durability and life of the product. More storage capacity ensures larger key sets can be accommodated across all systems, and its sleek, modern and modular design blends with most environments, which makes it easier to install, service and decommission, thus minimizing disruption and maximizing time in service. Additionally, the cabinets use sustainable, 100% recyclable materials and manufacturing techniques to reduce the environmental impact and carbon footprint.

Request more information: www.securityinfowatch.com/21280394

GM Proximity and Remote Keyless Entry Fobs from STRATTEC

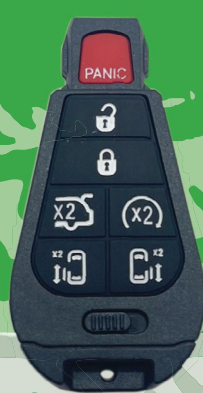
For 2023, STRATTEC is offering a total of 21 new GM proximity and RKE Fobs to our existing line. These products will be available in mid-December. They are all GM OE logos, including Chevy, GMC, Cadillac and Buick. To see the specific applications and download the brochure for these remote keyless entry fobs, visit the links below, and don't forget to use our new and improved Vehicle Match function for all your product needs.

<http://aftermarket.strattec.com>

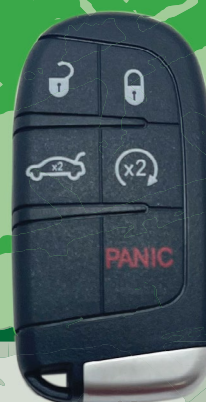
Request more information: www.locksmithledger.com/21287244



New Products For Chrysler, Dodge, Jeep



5944340



5944348



5944353



5944361

STRATTEC Quality Guaranteed

We've added 49 new Remote Keyless Entry Fobs and Remote Headed keys to our Aftermarket line for Chrysler, Dodge and Jeep Vehicles covering model years 2004-2021+



Visit **AFTERMARKET.STRATTEC.COM** to view all applications.



Micron i400 microSD Card

Technology innovations like 5G, artificial intelligence (AI) and the Internet of Things (IoT) are driving growth in AI-enabled cameras in video security applications and data storage at the edge.

Micron's microSD card is specifically designed for handling continuous high-quality video recording and multiple AI capture events concurrently.

Adopting edge storage through the microSD card can enhance video security system performance by enabling flexibility and scalability, and by reducing network bandwidth requirements and lowering the total cost of ownership.

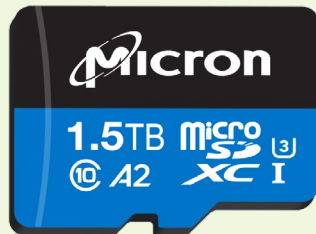
Unlike most memory cards on the market that are consumer-grade and have limited write capability, Micron's i400 microSD cards are designed for AI-enhanced video applications with features such as:

- High Endurance (32GB to 1.5TB): Supports up to 5 years of high-quality, continuous, 24/7 video recording and up to 4 months of storage (assumes a bit rate of 1 megabit per second) with the highest-capacity microSD card in the world.
- Outstanding Recording Performance: The optimized design delivers sustained performance for concurrent 4K video recording and up to 8 AI capture events every second.
- Industrial Quality: Reliable high quality provides a 2 million hour mean time to failure (MTTF) rating, plus 5-proof protection encompassing water, shock, x-ray, magnet and impact.
- Smart Management: Health monitoring tracks usage and card health, and the field firmware update provides a secure way for the card to be updated remotely when needed.

www.micron.com

Request more information: www.securityinfowatch.com/21278805

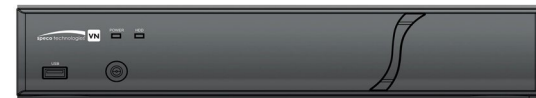
2022 **SIW** SECURITY INFOWATCH.COM®
READERS' CHOICE AWARDS.
★ TOP PRODUCT ★



Speco D16VN 16-Channel HD-TVI DVR

The NDA-compliant D16VN from Speco Technologies is a 16-channel HD-TVI Digital Video Recorder with storage capacities ranging from 2 terabytes to 10 terabytes. It can record up to 4 megapixels as well as UTC function allowing for both zoom and focus as well as OSD control over coax. Equipped with 2-way audio communication, it is also compatible with Speco's patented Digital Deterrent technology, which focuses on stopping crime before it occurs. The DVR is equipped with EZ Search technology, which allows users to easily comb through a day's worth of recordings in seconds.

Request more information: www.securityinfowatch.com/21287307



Seagate SkyHawk 20TB HDD

Designed for NVRs enabled with AI for edge security applications, Seagate's SkyHawk AI 20TB Hard Disk Drive (HDD) intelligently adapts to the scale of the users' AI environment, supporting up to 64 HD video streams and 32 AI streams. With the capability to support scalable AI workloads, the drive meets the needs of advanced VIA systems to analyze and record video footage while simultaneously supporting GPU analytics. It features high reliability with two million hours mean time between failures (MTBF) and a 550TB/year workload rate.

Request more information: www.securityinfowatch.com/21287303



Enterprise Recording Server from BCDVideo

Accelerate video application performance while providing room for future growth with the BCDT08-EVS enterprise 8-bay tower video recording server from BCDVideo. Dual M.2 operating system solid state drives and bi-directional SAS drives provide high performance and up to 128TB of dense storage in a space-conscious tower form factor. The latest Intel Xeon E-2236 processor, paired with up to 64GB of DDR4 memory allow for video-optimized throughput.

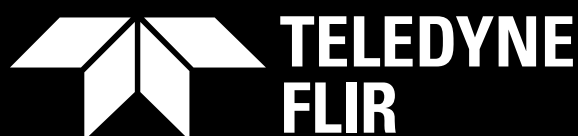
Request more information: www.securityinfowatch.com/21287309



64-Channel NVR from IDIS

The IDIS DR-8564 enterprise-class, 64-channel network video recorder is NDA-compliant and delivers outstanding transmission speed and quality using the latest Intel chipset technology. Boasting an incoming throughput of 540Mbps and up to 1920ips UHD real-time recording, it utilizes Intelligent Codec to reduce bandwidth and storage requirements. It also gives users the assurance of RAID 1, 5, and 10, as well as redundant power. Ideal for a range of mid-to-large sized applications, it benefits from simple plug-and-play installation and rapid one-click configuration for multi-site deployments, as well as support for ONVIF third-party camera integration.

Request more information: www.securityinfowatch.com/21287301



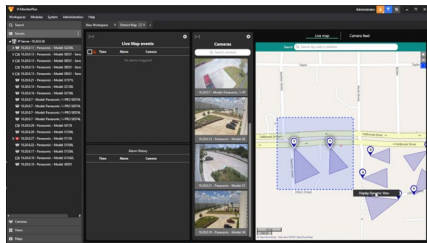
Multi-Layered Physical Security Solutions Experts

Meet the FLIR FH-Series ID



Learn more at www.teledyneflir.com/fh-series-id

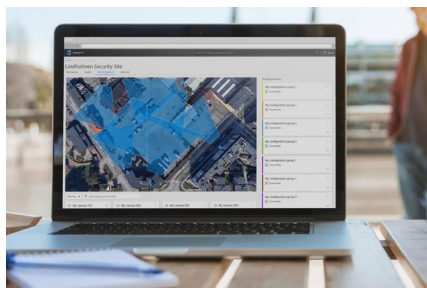
Request information: www.SecurityInfoWatch.com/10213696



Video Insight VMS 7.9.3 from i-PRO

The latest Video Insight (VI) VMS from i-PRO features live maps, enhanced Vaxtor LPR integration supporting vehicle make, model, and color (MMC), body-worn camera streaming, and third-party integrations. The dynamic Live Maps feature vastly improves situational awareness for security officers monitoring multiple cameras. The feature supports quick access to cameras of interest with an easy drag and draw selector tool creating view layouts on the fly for secondary monitor viewing. Additionally, the VMS further expands integrations with IP audio devices including Aiphone IP video intercoms, TOA intercoms and the TOA IP-A1SC15 IP-horn speaker.

Request more information:
www.securityinfowatch.com/21281539



Irisity IRIS+ Video Analytics Solution

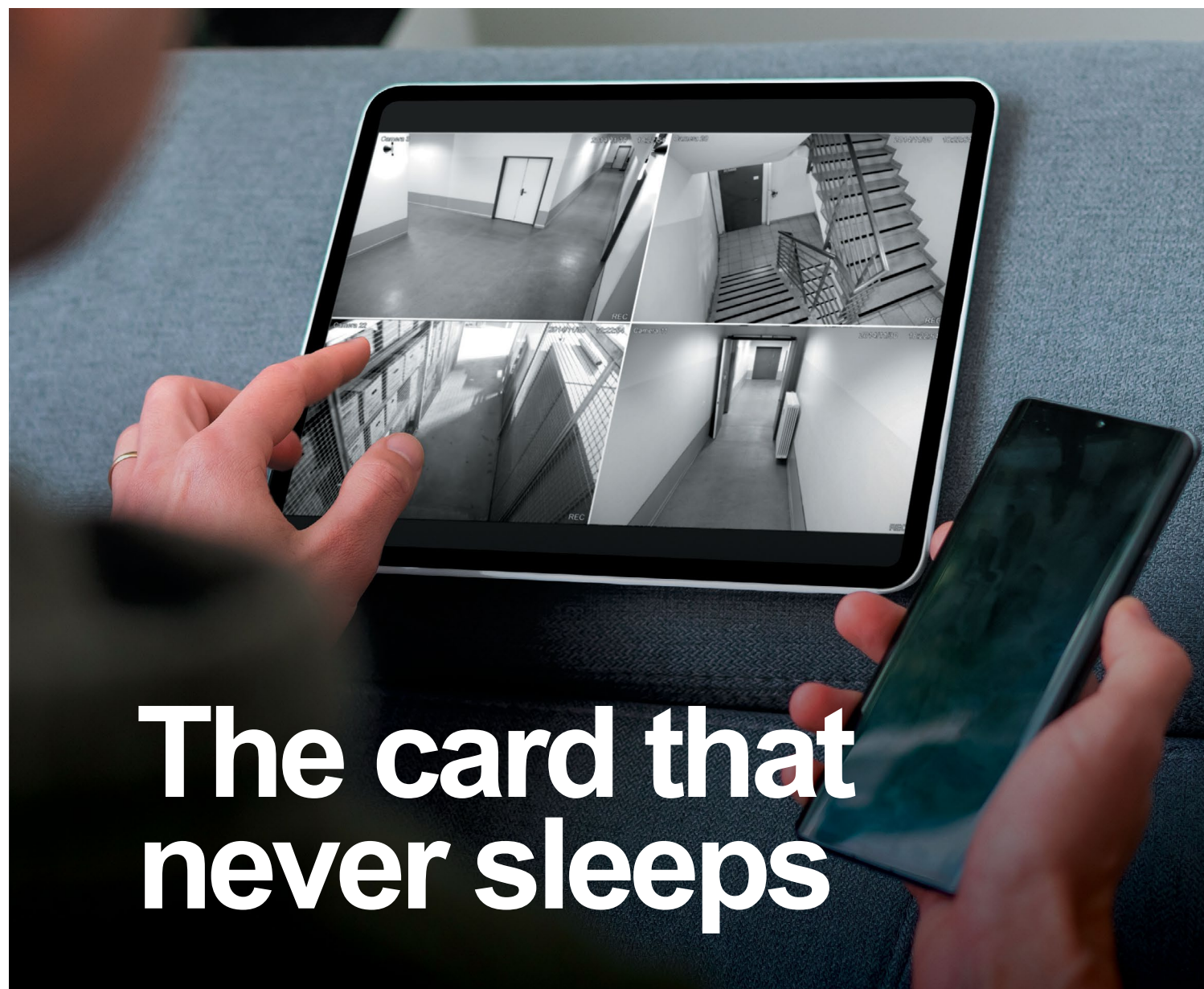
Irisity IRIS+ is an AI-powered video analytics solution that combines the capabilities of Agent Vi's innoVi and Irisity's Iris into one powerful analytics platform. The platform is designed to support customization and more advanced industry-specific vertical offerings. It enhances the already rich AI capabilities of both platforms with broad object classification for the highest accuracy levels in the most challenging environments. A flexible and scalable analytics solution incorporating advanced versions of commonly used analytics, it also offers a streamlined user experience and new statistics functionality. A new planning tool empowers integrators and end-users to outline their deployments based on specific need.

Request more information:
www.securityinfowatch.com/21280120

Ava Flex Camera from Motorola Solutions

Motorola Solutions' Ava Flex camera is an entry-point solution that brings intelligence and ease of use to any organization. The camera's Wi-Fi capability makes it easy to deploy for businesses with one or multiple locations. When used with the Ava Aware cloud video management system, it provides AI-based video and audio analytics, as well as features including proactive alerts, similarity search, occupancy counting, anomaly detection and more. Ideal for businesses with either single locations or multiple distributed sites looking for a lower barrier to entry for cloud-based, AI cameras, they are able to operate in low-light conditions with night vision.

Request more information: www.securityinfowatch.com/21282380



The card that never sleeps

Micron® Industrial microSD Cards 32GB-1.5TB



Optimized for 4K video
 + AI event recording
 Up to 5 years 24/7 recording

Up to 1920 TBW
 Health monitor and
 field firmware update



Edge storage for AI-enhanced video security

Request information: www.SecurityInfoWatch.com/12355256

© 2022 Micron Technology, Inc. All rights reserved. Micron, the Micron orbit logo, and Intelligence Accelerated™, and other Micron trademarks are the property of Micron Technology, Inc. All other trademarks are the property of their respective owners. The products are only warranted to datasheet specifications.





Aiphone Mullion Mount IP Video Door Station Helps to Reduce Germs at Entrances

Less than seven inches tall, and at a slim width under two inches, the new IX Series IX-DVM Mullion Mount IP Video Door Station from Aiphone has a small footprint with a BIG IMPACT.

Being UL Listed and TAA Compliant, this feature-rich station opens doors to more job opportunities with its compact

form and its various built-in benefits:

- WDR camera avoids sun glare and silhouettes regardless of the mounting angle.
- LED indicator lights meet ADA regulations with clear visual cues.
- Touchless call sensor reduces the spread of germs.
- Card slot for microSD™ simplifies on-board recording.
- Aluminum die cast withstands everyday use at busy entrances.
- Low-light LED provides illumination when conditions are too dark.

Whether installing new IX Series systems, or upgrading existing ones, the DVM will impress customers with its timeless style, expanded capabilities, and its amazing flexibility to be mounted in more compact locations.

www.aiphone.com/products/ix-dvm



Request more information: www.securityinfowatch.com/21277603

Viking Electronics Touch-Free VoIP Entry Phones

Viking's Touch-Free IP Entry Phones feature a built-in motion sensor. Simply wave your hand over the sensor to place a call. The no-contact operation eliminates exposure to germs and bacteria from typical pushbuttons, while providing quick and reliable communication for SIP VoIP phone systems with PoE. For visibility, the sensor LED lights blue when idle, flashes green while calling, and lights solid green when the call is answered. These entry phones dial up to five different numbers and can be programmed from any touch tone phone, PC, or remotely using a static IP address. On-board 2 Amp relay contacts are provided for activating door strikes or gate controllers. Flush and surface mount options are available, as well as Enhanced Weather Protection for outdoor installations.

<https://vikingelectronics.com/products/e-30tf-ip>

Request more information: www.securityinfowatch.com/21241961



Paging and Audio Distribution System from Bogen Communications

The Nyquist C4000 Paging and Audio Distribution System from Bogen Communications is a software-centric IP-based paging and intercom solution designed to meet the communication needs of commercial environments by providing a scalable and flexible software-based solution for paging and audio distribution. It leverages a state-of-the-art system controller with an easy-to-use web-based GUI that is accessible from any computer, tablet or mobile device. Designed to also support existing building infrastructure, it integrates with LAN, WAN and legacy speaker cabling and can be scaled to support a virtually unlimited number of audio sources, end-points and zones.

Request more information: www.securityinfowatch.com/21261167



SecurityInfoWatch On-Demand Webcasts

Roundtable: Is Gunshot Detection the New Frontier in Security Technology?

As active shooter and gun violence incidents continue to rise, emerging technologies are flooding the market in response. With the sea of choices security end-users can make, is gunshot detection better than the rest? This roundtable of security experts will zero in on gunshot detection technology, examining how it works, what customers are adopting it, and let the audience know if they think it can make a difference in active shooter response. Join the discussion!



www.SecurityInfoWatch.com/21287528

Earn
**CEU
Credits!**

More Archived Events:

• *COVID-19 Lessons Learned: How Security and Risk Have Been Reshaped*
(sponsors: Brivo, Dataminr, dormakaba)

• *Four Biometric Access Control Trends You Can't Ignore in 2023*
(sponsor: Alcatraz AI)

• *Measuring Cyber Resilience: How to Prove you are Ready for the Next Attack*
(sponsor: Immersive Labs)

• *New Tech in Physical Perimeter Protection*
(sponsors: CMOOR Group, National Monitoring Center)

• *Special Event and Sports Facility Security*
(sponsors: dormakaba, Everbridge, Evolv, Salient Systems)

Access them all (and more) at www.SecurityInfoWatch.com/webinars



IP Speaker Microphone from Louroe Electronics

The DigiFact 830 from Louroe Electronics is a two-way, ceiling-mounted 6.5-inch IP network speaker microphone. It harnesses the value of networked audio monitoring technologies which analyze and stream bi-directional audio. Integrating into the Louroe Microphone Application Platform (LMAP), the wide dynamic range audio device delivers broad frequency response and is sensitive enough to pick up low- and high-frequency audibles. Featuring a robust quad-core microprocessor selected to deliver "judicial" quality audio, the unit is capable of running an analytical application which detects and processes sounds of a threat.

Request more information:
www.securityinfowatch.com/21277579



Eagle Eye Networks 2-Way Audio

Eagle Eye Networks 2-Way Audio is a bi-directional audio capability that provides remote communication via the Eagle Eye Cloud VMS for secure, convenient communication to deliver active monitoring and response. The feature uses a standard IP speaker or horn connected to an Eagle Eye Bridge or CMVR to enable security professionals to instantly communicate warnings to intruders, deter security threats or manage crowds. Businesses can also use it to communicate in real time with staff, customers and visitors. It also includes mobile access via app on iOS or Android, as well as trespassing or loitering alerts using video analytics.

Request more information:
www.securityinfowatch.com/21285624

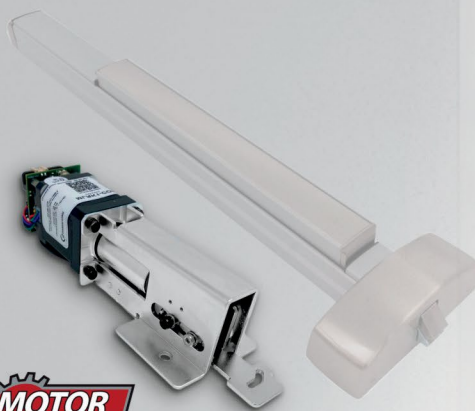
Zenitel's Turbine Mini Video Intercom

The Turbine Mini with Video (TMIV-1+) intercom from Zenitel provides video surveillance, two-way communications and remote-entry control, in a low-profile size (117 x 117 x 43.5 mm; 4.61 x 4.61 x 1.71 inches). It is perfect for use in indoor and outdoor environments, including buildings, universities, K12 schools, hospitals, and more. For video surveillance, it incorporates HD video up to 1080p resolution and a wide-angle lens that is also NDAA compliant. The ONVIF-conformant solution allows operators and users to see each other in all situations. It also incorporates high-definition voice technology, with a 10W speaker and amplifier and active-noise cancelling capabilities.

Request more information: www.securityinfowatch.com/21261018



THE SIMPLE SOLUTION FOR YOUR ELECTRIFIED LOCKING HARDWARE



MLRK1 SERIES

Motorized Latch retraction
Exit Device Kits



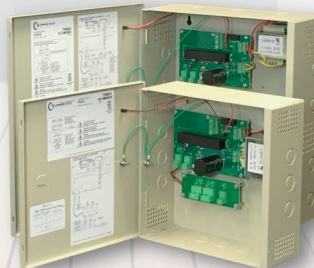
LPM190 SERIES

Motorized Latch retraction
Mortise Lock



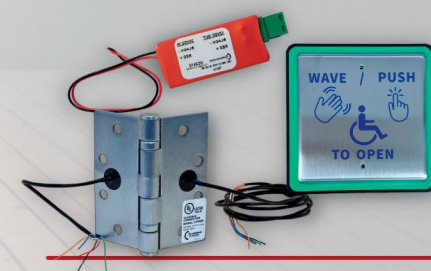
CAT FIELD TESTER

Portable Power Supply
Test & Troubleshoot



PS SERIES

Locking Hardware
Power Supplies



POWER TRANSFERS & ACCESSORIES

We are an electrified locking hardware manufacturer driven by a passion for helping our customers succeed! By manufacturing most of our products here in the US, we can promptly respond to custom or time-sensitive requests. So remember us on your next project because we're

"Always Here to Help!"

Request information: www.SecurityInfoWatch.com/12140374



ALWAYS HERE TO HELP

COMMANDACCESS.COM

888-622-2377



Commercial Fire Alarm Systems from NAPCO

NAPCO Security Technologies is manufacturer of an innovative, growing line of UL/NFPA code-compliant commercial fire alarm systems and devices for every region and AHJ, plus industry-leading fire alarm communications for fire system alarm monitoring and reporting.



Award-winning StarLink Fire Universal cell/IP communicators include new StarLink MAX Fire 5G LTE-M Communicators for maximum speed and next-level coverage on today's latest networks, plus the first models that support FirstNet® First Responders Network communications. StarLink communications technologies are proven to reliably work even where others cannot using patented dual switching antenna technology; and also, to save thousands on buildings' and facilities' budgets, they replace dual dedicated copper landlines that are increasingly scarce, costly and unreliably maintained.

Drawing on this expertise, Napco's award-winning, all-in-one FireLink FACPs feature built-in StarLink cellular and/or cell/IP communications, on-board LCD touch-pad annunciator, plus new cloud programming from any smart device. A 32-Zone conventional model comes preloaded with a sprinkler supervisory program. The new FireLink XL 255, designed for larger addressable applications, supports 128 to 255 points and features 7A power supply and dual path cell/IP communications.

NAPCO is an ISO9001:2000 certified manufacturer of quality products engineered to exceed industry standards; to be long lived and feature the lowest total cost of ownership and the industry's longest warranties.



<https://napcosecurity.com/products/fire-systems>

Request more information: www.securityinfowatch.com/21287192

UL-Approved Fire Warning Signals from E2S

E2S Warning Signals has released UL464 and UL1638 approved warning signals for use in fire and gas detection systems suitable for hazardous areas, industrial, marine and harsh environments. The D1XS2H is housed in a Type 4/4X, IP66 marine grade, corrosion proof aluminum enclosure and features sound output levels up to 127 dB(A) and 64 alarm tones, each of the 4 stage/channels can be remotely activated. The AlertAlarm horn sounder range is globally approved for fire, marine and general signaling applications and features 64 alarm tone frequencies and 4 remotely activated stages/channels. It is approved to UL464 and EN54-3.



Request more information: www.securityinfowatch.com/21287318

Wireless Siren with CO Annunciation from DMP



Integrators can provide added protection against the threat of carbon monoxide (CO) for a customer's wireless systems. With a new update, DMP's 1135 Wireless Siren can be programmed to annunciate CO alarms with a distinct Temporal 4 cadence to warn individuals on the premises of the potentially life-threatening situation. Fire alarms typically use Temporal 3 cadence, but in the event that a customer's carbon monoxide detector goes into alarm, the siren alerts occupants with a different annunciation pattern so they can more easily identify the emergency. This update brings the 1135 siren into compliance with changes to ANSI/UL 985 Household Fire Warning System.

Request more information: www.securityinfowatch.com/21257843



RESIDENTIAL & SMART HOME

ClareOne Smart Home Panel from Snap One



Bridge the gap between security and smart home integration with ClareOne.

ClareOne is an easy-to-use, all-in-one touchscreen panel that offers a unified experience for security, surveillance, and smart home capabilities. Whether your customers want to add a few smart devices to their system or build a fully connected home, ClareOne makes it simple. If you are interested in differentiating your services with a recurring monthly revenue model, ClareOne provides competitively priced self- or professional security monitoring and free smart home interactive services. For projects that require a hybrid smart home and security solution that won't break the bank, ClareOne will quickly become the most valuable asset in your portfolio.

www.snapav.com/shop/en/snapav/clare

Request more information: www.securityinfowatch.com/21231786



Johnson Controls IQ WiFi 6

IQ WiFi 6, a new mesh router solution for homes and businesses from Johnson Controls, is a Wi-Fi Alliance Certified router with Alarm.com management software built-in. When paired with an IQ Panel, it delivers a unified security and

Wi-Fi network throughout a site that can be managed and maintained by end-users and service providers through the panel's 7-inch touchscreen, iOS and Android mobile apps, and the Alarm.com website and Partner Portal. It has four network partitions, including a guest network and a network dedicated to the end-user's Wi-Fi devices, both of which automatically switch between 2.4 and 5 GHz to optimize range, speed, and performance.

Request more information: www.securityinfowatch.com/21260474

Alarm.com Smart Thermostat HD

Alarm.com's Smart Thermostat HD is fully integrated into its smart home security system and is Energy Star-Certified. The connected thermostat offers end users next-level comfort and control, plus the ability to monitor the health of the heating and cooling systems to optimize performance and avoid costly repairs. Featuring a sleek form factor and color touchscreen display, it is easy to install thanks to an on-display installation wizard, and homebuilders can take advantage of immediate energy savings prior to account setup. Other features include in-app diagnostic alerts, monthly HVAC health reports, motion sensor that wakes display on approach, and humidity and vent control.



Request more information: www.securityinfowatch.com/21282314



WiFi Water Leak Shutoff Valve from Resideo

Technology is making homes safer, smarter, and more connected. And that now includes home water leak management. New from Resideo, the Braukmann L5

WiFi Water Leak Shutoff Valve upgrades your customer's system to a smart water solution. The device automatically shuts off the water flow in the event of a leak, protecting them from potentially expensive damage and household disruption. The Resideo App can be set up as a water leak detection control panel with notifications, customized alerts, and pre-set shutoff locations. The wireless functionality means customers can control their home's water from anywhere.

Request more information: www.securityinfowatch.com/21287320



D® LOKK**Latch**® DELUXE³

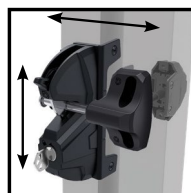
Premium Privacy and Security Gate Latch with External Access



Now Available - the best keeps getting better!



Scan the QR code for more information or visit us.ddtech.com



Vertically & horizontally adjustable during & after installation for gate movement



Patent-pending mounting bracket acts as a drill template for simple & quick installation



Revolutionary, snap-fit connector rod provides a quick and secure connection to the external access button for a simplified installation

☎ : (800) 716-0888

🌐 : ddtech.com

✉ : info@ddtechusa.com



Warranty conditions vary according to gate or door application and usage. See full Warranty details and limitations on D&D Technologies' website.



D&D Technologies®
World's most trusted gate hardware

Request information: www.SecurityInfoWatch.com/10929523



NETWORKING, IT & CYBERSECURITY



Araknis IT Network Ecosystem from Snap One

The best technology integrators make Araknis their go-to network ecosystem choice. Seamless installation is an Araknis mantra, which is why every model and SKU we make is crafted with dealer-inspired features to make your life easier. All our access points, routers, and switches are designed to work together, making for a fast, reliable network that is easy to install

and update. All Araknis products are rigorously tested to ensure strength, quality, and reliability. And since every device is cloud controlled, you can view them all in a single, easy-to-use dashboard. If you ever need to update or reconfigure a device, just use your mobile device – no need to roll a truck. From residential installs to high-rise offices, Araknis will make your net work.

www.snapav.com/shop/en/snapav/araknis

Request more information: www.securityinfowatch.com/21287235



Cynalytica SerialGuard ICS Cybersecurity Solution

Designed for Industrial Control Systems (ICS), SerialGuard is a fully passive serial packet sniffer that enables secure visibility within vulnerable legacy networks. Ideal for gas pipeline security operations, the fail-safe sensor monitors Level 0 and Level 1 serial communications between field devices and controllers. Combined with the Cynalytica AnalytICS Engine Platform, it can also reveal and help alert traffic anomalies that are indicative of a cyberattack, physical attack or system misconfiguration. Legacy serial communications make up 30 to 60 percent of all U.S. critical infrastructure. These typically insecure and unmonitored assets have been historically overlooked, leaving gas pipeline and other utility operators with a large monitoring blindspot.

Request more information:

www.securityinfowatch.com/21287324



Threat Management Appliances from WatchGuard Technologies

The Firebox M290, M390, M590, and M690 unified threat management appliances from WatchGuard Technologies are affordable yet highly capable firewall solutions for small and midsize businesses, with the processing power to handle encrypted and HTTPS traffic. In addition, new expandable ports and integration with WatchGuard Cloud enable the firewalls to offer the flexibility needed to accommodate changing networking and security needs. Service providers can share configurations across multiple appliances and clients via templates and deploy appliances remotely from the Cloud. A cohesive 30-day view of log data, fast log search and automated reporting greatly increases visibility.

Request more information:

www.securityinfowatch.com/21287321

AHS ACCESS HARDWARE SUPPLY



LCN®

SCHLAGE

VON DUPRIN®

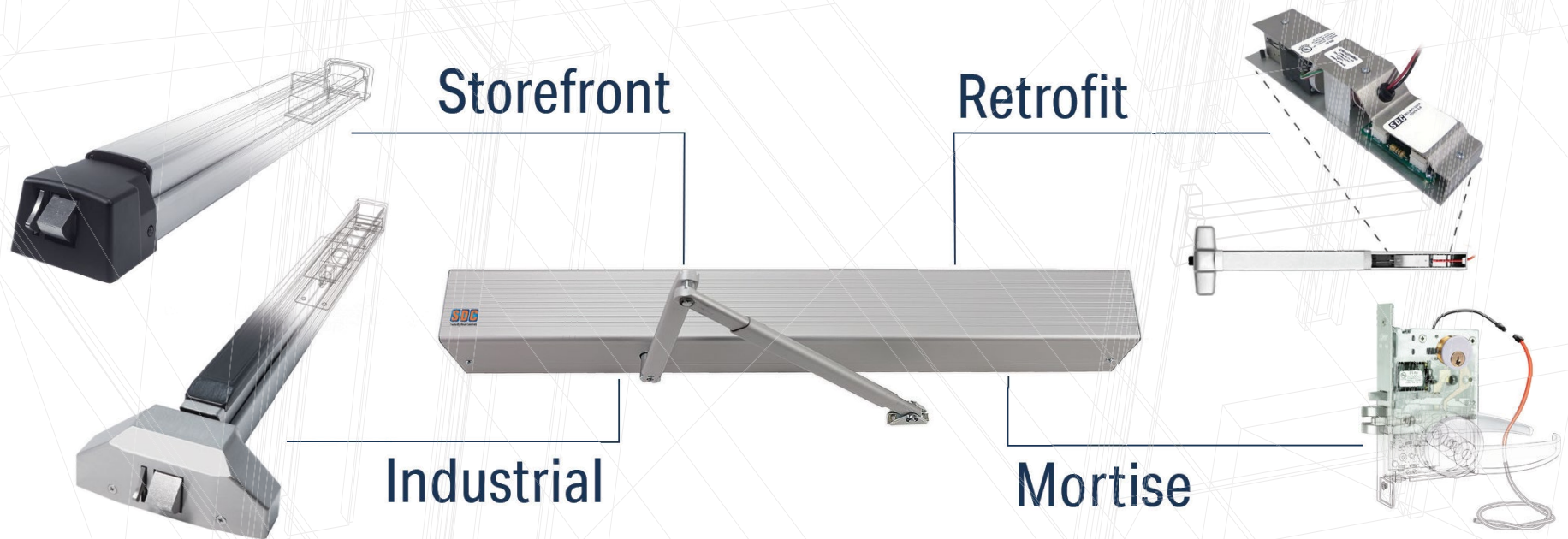
For over 25 years, Access Hardware Supply has served as your partner in electronic and mechanical door hardware. From mechanical solutions that stand the test of time, to electronic ones that report every bit of information you need to keep your team safe, Access Hardware Supply has you covered.

Where Service Meets Expertise.

accesshardware.com | (800) 348 - 2263

Request information: www.SecurityInfoWatch.com/10722906

LEADERS IN ELECTRIC LATCH RETRACTION



Electric Latch Retraction (ELR)

Since 2012, when SDC launched **QuietDuo™** – the first Motorized ELR Kits to convert mechanical exit devices – we’ve been “quietly” leading in **electric latch retraction (ELR) upgrades for access control**. This includes retrofit solutions for most brands of exit devices, as well as innovative SDC exit devices

& mortise lock-sets with **factory-installed ELR** and **automatic door operators** with a **built-in 1 Amp+ power supply** to power them. With advancements in electric motor technology, the use of a motor for electric latch retraction provides lower current draw, quieter operation, and greater durability over time vs. solenoids.

Why SDC’s Motorized Electric Latch Retraction?

From retrofit ELR field kits, to exit devices and mortise locksets, all SDC ELR products use the same motorized technology to provide both latch retraction and dogging (exit devices). All models are grade 1 and UL listed. Because of their low current draw, SDC ELR products can be powered with the built-in 1 Amp+ power supply that

comes standard in SDC’s AUTO series low energy operators - eliminating the need for a separate power supply!

SDC’s LR100 series retrofit ELR kits not only abolish the need for costly replacements of existing exit devices, but also deliver cost savings on installation of select exit device brands without removing the device from the door. Pushpad depression on select exit device models is also offered.



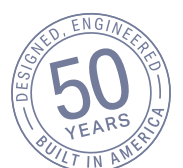
www.sdcsec.com/motorizedELR

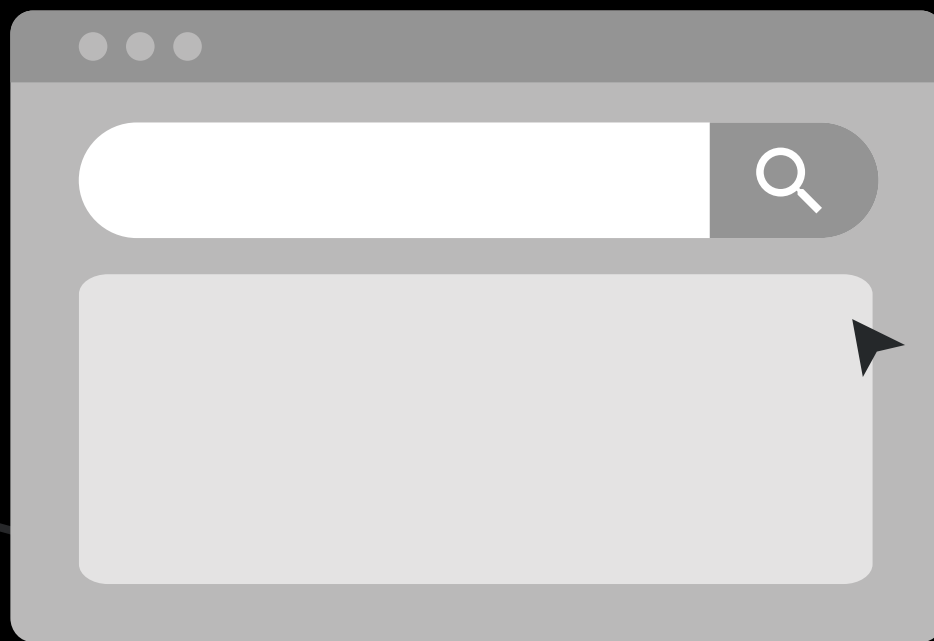
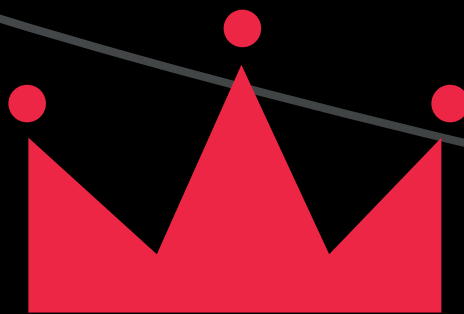


the lock behind the system

sdcsecurity.com ■ 800.413.8783

Request information: www.SecurityInfoWatch.com/10214991





Your One-Stop for Everything Online

SECLOCK is the master distributor of door hardware.



Master distributor of Allegion

LCN®

SCHLAGE

VON DUPRIN®

800.847.5625

SECLOCK.COM

Request information: www.SecurityInfoWatch.com/10215009