

FEATURED EXHIBITOR



Platinum Tools

Booth #3037

The PoE+ 10Gig Shielded RJ45 Field Plug (p/n 106250) from Platinum Tools optimizes data throughput to PoE+ powered devices. Compatible with a wide assortment of large cables with large conductors, its cast-metal shell provides end-to-end shielding from extraneous noise interference in high-bandwidth applications. Usable for Cat7/6A/6, no special crimp tool is required. They are UL and RoHS compliant. Visit booth #3037 at ISC West and enter daily to win a termination kit (one winner per day of the show).

Request more info at www.securityinfowatch.com/21086624

FEATURED EXHIBITOR

Flair Electronics

Booth #24134

Flair Electronics

has added two sensors to its WaterGuard leak detection devices (1010-H2OS-EN1751 and 3010-H2OS-EN1751). These sensors connect directly to the Inovonics EN1751 transmitter with 15



ft. of jacketed cable. An alarm is triggered whenever water or other conductive fluid rises 1/16 of an inch and bridges two of the nickel-plated probes. The 1010-H2OS attaches directly to a baseboard with screws or can be stuck to the side of a pan with double-sided tape. The 3010-H2OS is heavy enough to sit on the ground under a water heater or sink without moving.

Request more info at www.securityinfowatch.com/21069471

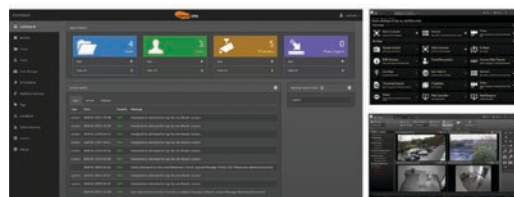


ABLOY USA

Booth #7055

The PROTEC2 CLIQ access management solution from ABLOY USA provides situational awareness with a system that combines the company's mechanical and electromechanical lock technology into a digital solution. The system enables users to manage and track all keys, personnel access rights and movement from a central location.

Request more info at www.securityinfowatch.com/12120456



Airship Industries

Booth #33051

Airship Industries' Enterprise Management Software (EMS) is a browser-based video management GUI that tailors edge video, advanced sensor integration, edge-based analytics and related metadata. Its software ecosystem runs locally, in the cloud, and in bare metal and virtual operating environments.

Request more info at www.securityinfowatch.com/21124065



ACOEM

Booth #2052

Compact and lightweight, ACOEM Gunshot & Acoustic Threat Detection modules are easy to install and integrate with existing or new visual monitoring equipment in public spaces. By integrating sound with sight, the technology automatically pinpoints acoustic incident zones within a matter of seconds.

Request more info at www.securityinfowatch.com/21124889

Aiphone

Booth #23005

Aiphone's new IXG Series IP Multi-Tenant Video Intercom offers property owners a single, powerful system that combines the feature-rich benefits of an IP intercom with the versatility of a multi-tenant solution. Complete with PoE stations and a cloud-based tenant app, the network-based solution can be easily expanded.

Request more info at www.securityinfowatch.com/21124722



Alcatraz AI

Booth #L15

Developed by the Apple engineers who were involved in the FaceID project, the Alcatraz Rock 3D Facial Authentication Platform has the ability to replace or augment access control badges, turnstiles, and guards with Artificial Intelligence. It prevents common access control

problems like tailgating and piggybacking.

Request more info at www.securityinfowatch.com/21124882

FEATURED EXHIBITOR

Open Options

Booth #5301

Connect Care is a suite of services offered by Open Options that connects customers to an array of support and technical expertise throughout the lifetime of their investment. The services enrich the DNA Fusion experience, providing best-in-class technical capabilities, educational training, and personalized services to the open platform access control solution. Open Options created Connect Care to provide customers with a unique, 360-degree experience, empowering customers with all the care needed for securing people, buildings and data.



Request more info at www.securityinfowatch.com/21125131

FEATURED EXHIBITOR

CodeLocks

Booth #33107

KL1100 from CodeLocks features a stylish, slimline front plate, and it gives any locker or environment a modern, contemporary feel. With two modes allowing the lock to be managed locally or remotely, it is perfect for environments with multiple lockers that would benefit from using and managing RFID cards, such as gyms, spas, hotels, schools and hospitals. Easy to install, operate and manage, it features a powered latch enabling intuitive 'push shut' closing. A Private Function allows the same RFID user card to be repeatedly used.



Request more info at www.securityinfowatch.com/21089657

AlertEnterprise

Booth #26099

AlertEnterprise Visitor Identity Management enables fast and efficient on-site registration, email and web pre-registration; self-service kiosks; and optional facial recognition technology for a frictionless customer experience. Real-time vetting against watch lists and automated, policy-driven background checks validate visitors and contractors before granting access.

Request more info at www.securityinfowatch.com/21124689



Alula

Booth #22043

The Slimline Touchpad from Alula controls every aspect of a modern security system, delivering at-a-



glance control of video cameras, Z-Wave devices and sensors. The 7-inch color touchscreen automatically speaks zone changes and tells users what is happening in and around their property. The interface matches the Alula App.

Request more info at www.securityinfowatch.com/21115562



Allegion

Booth #17089

Schlage Control mobile enabled smart locks with Bluetooth mobile credential compatibility enable multi-family property managers to differentiate by offering a convenient way for authorized guests to unlock resident unit doors. Its open architecture gives users the freedom to choose any physical access control software (PACS) provider.

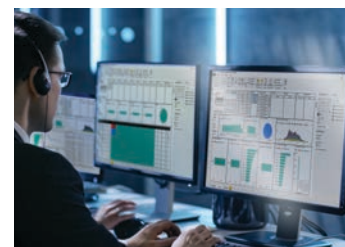
Request more info at www.securityinfowatch.com/21124104

Altronix

Booth #11073

Altronix Tango8A, Tango8P and Tango8AP deliver 12VDC and 24VDC simultaneously over 8 or 16 outputs for powering access control and security devices. Powered by any 802.3bt PoE source up to 90W, it eliminates the need for an electrician, dedicated conduit and wire runs.

Request more info at www.securityinfowatch.com/21124730



AMAG

Booth #14089

Symmetry Business Intelligence is a robust analytics engine from AMAG

designed to provide critical information via data analysis. It uses data from an access control system to analyze a person's access activity and establishes patterns based on a risk score methodology. Anomalous behaviors are flagged in a dashboard.

Request more info at www.securityinfowatch.com/21124702

FEATURED EXHIBITOR

CyberLock

Booth #27117

CyberLock has developed the CyberKey Blue 3, which gives users ultimate flexibility when it comes to updating their access permissions. Designed with a mobile workforce in mind, the latest Bluetooth-enabled CyberKey controls access to isolated sites and sprawling facilities. It enhances system security by supporting temporary access and delayed activation, extending precise access control features to the most remote of locations. Users can request access permissions within cellular range, cache permissions via the CyberAudit Link app, and later activate the key outside of cellular range.



Request more info at www.securityinfowatch.com/21125171

FEATURED EXHIBITOR

Nightlock Door Security Devices

Booth #22136

Nightlock Lockdown 1 uses the strength of the floor to withstand force of 2,000 lbs., on a door that opens inward and 1,600 lbs., on doors that open outward.



On a conventional door, an intruder or active shooter can break a door window, reach in, and gain access to the doorknob lever; however, with the Lockdown 1 at floor level, it is out of reach. The system comes with easy instructions, wall storage box, matching screws and plastic anchors for mounting on ceramic tile, marble or concrete floors.

Request more info at www.securityinfowatch.com/12400251

Arcules

Booth #31081

Arcules Video Surveillance-as-a-Service (VSaaS) and Access Control-as-a-Service (ACaaS) service bundle provides video analytics and advanced management of video surveillance data and access control information in one unified solution. Users can correlate video data with access control events and authorize access to grant or restrict permissions through the Arcules portal.



Request more info at www.securityinfowatch.com/21124155

Arecont Vision Costar

Booth #8045

The Omni LX Remote Setup (or RS) indoor/outdoor dome cameras from Arecont Vision Costar offer 8 or 20 Megapixel (MP) models each featuring four sensors mounted in individual, motorized gimbals. Remote focus/zoom capability with customizable views complement the default 180-, 280-, and 360-degree choices.



Request more info at www.securityinfowatch.com/21114999

AtlasIED

Booth #1042

AtlasIED's IPX family of IP endpoints provide facilities with an effective means of audio and visual notification for daily communication and critical alerts. The products expand VoIP or SIP communications systems by integrating endpoints for greater coverage than provided by handset-based systems.



Request more info at www.securityinfowatch.com/21124320

Avigilon

Booth #22031

The Avigilon H5M dome security camera is an intelligent and cost-effective solution designed for outdoor-use. The small footprint camera is IP66 rated to handle tough environmental conditions and its modular design provides easy installation. Built-in Unusual Motion Detection (UMD) technology offers increased situational awareness.



Request more info at www.securityinfowatch.com/21124691

Axis Communications

Booth #14051

The rugged AXIS C1310-E Network Horn Speaker can withstand temperatures from -40 to +140 degrees Fahrenheit.



Based on open standards, it can be integrated with other systems like VoIP telephony, and video cameras and analytics. Features include clear remote live speak or pre-recorded voice messages and remote health testing.

Request more info at www.securityinfowatch.com/21124329

FEATURED EXHIBITOR

Cansec Systems

Booth #25131

The MAP1 Modular Access Control Panel from Cansec can be provisioned for 2 or 4 doors, each with Exit Readers. If you only need two, you only pay for two. You can add two more doors by simply buying an upgrade Provisioning Code. No additional panel hardware is required. The product supports up to 100,000 cardholders and includes a five-year warranty.



Request more info at www.securityinfowatch.com/12305916

FEATURED EXHIBITOR

Command Access Technologies

Booth #26130

Command Access will be launching numerous motorized locking door hardware products at ISC West, including: Additions and updates to the MLRK1 (motorized latch retraction kit) series; a new motorized latch pullback mortise lock using Command's Grade 1 ML, the critical component in its Universal Privacy Bathroom Kit; a new motorized version of its house-brand Grade 1 Mortise and Cylindrical locksets, which provide flexibility with universal voltage input 11-30V and field selectable EU/EL with the push of a button.



Request more info at www.securityinfowatch.com/21125167

Boon Edam

Booth #8037

The Speedlane Compact from Boon Edam provides all the safety and security you expect from a security turnstile in a small footprint. A short V-shaped cabinet with an ergonomic design optimizes the use of valuable floor space and the swing-motion glass barriers coordinate with building décor and design.



Request more info at www.securityinfowatch.com/21124152



BriefCam

Booth #11121

The BriefCam Mobile Application, which runs on both Android and iOS devices, enables law enforcement and security personnel to maximize the value of their surveillance camera investments by making video searchable on-the-go. It is an extension of the company's Video Content Analytics Platform.

Request more info at www.securityinfowatch.com/21115371

Camden Door Controls

Booth #29079

Kinetic by Camden Door Controls is a 900 MHz power harvesting wireless system that uses the energy created by the operation of the switch to power the wireless transmitter. It features an ultra-compact receiver (easily installed in automatic door operator cabinets), with field-selectable momentary, delayed or latching relay operation.



Request more info at www.securityinfowatch.com/21093267

CDVI

Booth #20001

U4GO from CDVI Americas is a high performance UHF (902-928 MHz) integrated system that provides secure long-range access for vehicles and pedestrians in applications such as parking facilities, gated communities, campus' and rolling stock. A high security protocol (AES128) RF module can manage up to 100 remote transmitters.

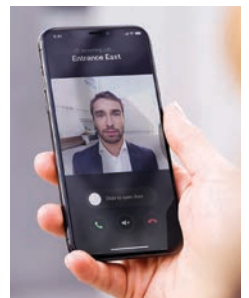


Request more info at www.securityinfowatch.com/21124720

Commend Inc.

Booth #13115

Symphony from Commend Inc., is a cloud-based intercom security platform ideal for door/gate communication and control for residential associations, property developers and operators of large-scale buildings. It can automatically detect devices on the network, which makes it possible to centrally configure and manage complex building communications.



Request more info at www.securityinfowatch.com/21124897

FEATURED EXHIBITOR

Shooter Detection Systems (SDS)

Booth #24099

The next generation in gunshot detection has arrived with Guardian Wireless, a patent-pending wireless/battery-powered gunshot sensor meeting market demand for a secure and reliable wireless gunshot sensor option. Leveraging the proven technology from the Guardian PoE sensor, Guardian Wireless is powered by a lithium battery pack, making it 100% wire-free, with an optional DC power input as a redundant power option. This third-generation sensor from SDS is connected by a secure long-range wireless technology that maintains a regular system heartbeat, ensuring optimum system uptime as the sensors scan the environment for shots while filtering out false alerts.

Request more info at www.securityinfowatch.com/21096111



FEATURED EXHIBITOR

AES Corporation

Booth #6034

The AES Hybrid comes standard with an integrated IntelliPro full data module and Wi-Fi Internet – no need to order a 7794A standalone or 77-WiFi adapter separately.

The 7177 provides dual functionality, combining elements of the powerful 2.0 Fire Subscriber with IP Link capabilities to act as a network bridge. Start a new network, optimize network performance, or expand an existing network. Contact us to learn more about how we can help you grow your business.



Request more info at www.securityinfowatch.com/12413387



ComNet

Booth #5071

ComNet's 12-port Gigabit managed Layer 2 switch includes two 10GigE uplink ports for high-bandwidth requirements such as smart cities and connected vehicle applications. The CNXE2GE2TX8MSPOE features eight 10/100/1000BASE-T(X) RJ-45 ports compliant with IEEE802.3af/at PoE, two dedicated 100/1000/2.5GBASE-X SFP ports and two dedicated 1000/2.5G/10GBASE-X SFP ports.

Request more info at www.securityinfowatch.com/21083688

Cypress Integration Solutions

Booth #6059

The Cypress OSM-CPI Interface is used to retrofit a Wiegand controller to interface with an OSDP reader. Its inputs control a connected peripheral device's LED/buzzer, as well as a tamper output. Upgrading to SIA's OSDP standard encrypts the reader connection to prevent hacking and ensures future device compatibility.

Request more info at www.securityinfowatch.com/21124733



Dahua Technology USA

Booth #14039

Dahua's LincX2PRO series includes a video doorbell (DHI-DB11), mini camera (IPC-C26EN) and floodlight camera (IPC-L26N) that can be operated using its DMSS app. An excellent addition to residential and small business installations, this suite of products integrates with Alexa and records directly to an SD card, NVR or DVR.

Request more info at www.securityinfowatch.com/21124974



Delta Scientific

Booth #7045

Delta Scientific's bolt down DSC7090 beam barricade has passed crash tests

to garner an ASTM M30/P1 rating, meaning it will stop a 15,000 pound truck going 30 mph. Raising in only five seconds and lowering in two seconds yields a cycle rate of 100 vehicles in and out per hour.

Request more info at www.securityinfowatch.com/21114117



Digital Watchdog

Booth #25089

DW Spectrum IPVMS v4.0 includes new features such as virtual offline cameras, failover for storage, secure video export, updated user experience and a more intuitive interface. It supports H.265 for ONVIF devices, webcams (built-in and USB), custom watermarks over videos, and more.

Request more info at www.securityinfowatch.com/21109955

FEATURED EXHIBITOR

Theia Technologies

Booth #7056

Theia Technologies will feature its family of 4K lenses, the SL410 (4-10mm) and SL1250 (12-50mm). They are compatible with 4K cameras including models from Arecont, FLIR, Hanwha, Honeywell, Dahua and Vivotek. The lenses cover up to 1/1.7" 4K image sensors and resolve the smaller pixels of the 1/2.3" 4K sensors. At



64.5mm long by 59mm diameter they are compact enough to use in domes, bullets and smaller housings and are available in motorized, manual, DC auto-iris, P-iris, and CS or D25 board mount versions.

Request more info at www.securityinfowatch.com/12399899

FEATURED EXHIBITOR

TownSteel

Booth #12136



The unique double-lock keyless technology of TownSteel's e-Genius 5000 BLE Smart Interconnect Lock connects maximum strength and security with convenience. Two locks in one, it provides the ability to open and lock both a latch bolt and deadbolt with a single lever motion. BLE technology offers real-

time remote access and control of multiple locks and devices, including a 3000 audit trail from the TownSteel app. It is UL 10C 3 Hour Rated. Full specs and available hardware finishes are available in the supplier's downloadable digital catalog.

Request more info at www.securityinfowatch.com/21125158

DIRAK

Booth #7033

E-LINE by DIRAK's MLR 2500KP swinghandle for rack access control incorporates OSDP protocol combined with LEAF identity. The swinghandle also has a multi-frequency antenna as well as added LED lights that show the status of the handle. Dual-factor authentication is also an option.

Request more info at www.securityinfowatch.com/21124652



Ditek

Booth #8056

The DTK-NETS series from Ditek provides surge protection for Ethernet and PoE devices. Each model supports data speeds up to 10GbE without signal degradation and carries a robust 20kA per pair surge current rating. Rack-mount models and wall-mount versions are available.

Request more info at www.securityinfowatch.com/21124142



Dortronics

Booth #1037

Dortronics 4800 Series Smart Interlock Controllers can be user-configured in the field to accommodate up to five doors with various input/output configurations. It features 12 field assignable inputs and 17 configurable

relay outputs. Other features: Voltage spike and surge protection; and adjustable propped door, panic release and door unlock timers.

Request more info at www.securityinfowatch.com/12189667



DynaLock

Booth #4083

DynaLock's new access control power supplies include: the Model

5725, which outputs up to 1.5 Amps of continuous current at 12 or 24 VDC; the 5800 Series, which output 12 or 24 VDC at up to 3 Amps continuous; and the 5900 Series, which delivers up to 6 Amps at 12 or 24 VDC.

Request more info at www.securityinfowatch.com/21124674



ELATEC USA

Booth #23006

The TWN4 Palon Compact RFID Reader Module and Panel Mount from ELATEC are optimized for physical access control (PAC).

They read all major RFID transponder technologies, including HID Global, LEGIC and NXP, and mobile ID technologies Near-Field Communication (NFC), and Bluetooth Low Energy (BLE).

Request more info at www.securityinfowatch.com/21124108



FEATURED EXHIBITOR



EIZO

Booth #18136

The DuraVision FDF2711W-IP 27-inch IP decoding monitor from EIZO connects to an IP camera or switch to display video streams delivered over a network. It does not require a PC, software, or other hardware. It features a second-generation IP decoding platform that allows it to decode H.265 (HEVC), as well as H.264 and MJPEG codecs in real time. It maintains high frame rates, even when streaming high-resolution video across multiple channels. Up to 48 IP cameras can be registered to the unit, with support for cameras with ONVIF Profile S, Axis VAPIX, Panasonic protocols, or RTSP.

Request more info at www.securityinfowatch.com/21124335

FEATURED EXHIBITOR

Napco Security Technologies

Booth #12043

iSecure all-inclusive cellular alarm systems by NAPCO give dealers the ability to add new RMR-accounts with low equipment cost and one-hour professional installation. The system is available in three different kits.

Options include: Wireless keypad; 4- or 7-inch touchscreen with Z-Wave control; 50-foot wireless PIR; two door

transmitters; smart app and notifications; 85dB siren; and RF-receiver. The system also includes the Go-Anywhere Hub with built-in StarLink Cellular/IP LTE alarm reporting, which can be positioned anywhere for best signal reception and less vulnerability to smashing.

Request more info at www.securityinfowatch.com/21125148



ELK Products

Booth #8032

ELK Products introduces a 360° PIR Motion Sensor to its 319 Series Wireless Sensor line. The ELK-319PIRC is ideal for ceiling-mount applications and provides a detection area of 20-45 feet. It features selectable sensitivity, built-in tamper switch and uses the 319.5 MHz operating frequency.

Request more info at www.securityinfowatch.com/21124054

EXPOCAD

Booth #40810

ELI from EXPOCAD uses intelligent floor plan technology to allow precise location of emergencies. The app overcomes the limitations of push-to-talk and walkie-talkie communications by connecting authorized users to first responders, managers and authorized staff using a smartphone. The exact location is instantly communicated to first responders.

Request more info at www.securityinfowatch.com/21124164



Farpointe Data

Booth #6077

Leveraging the Security Industry Association's (SIA) Open Supervised Device Protocol (OSDP), Farpointe Data's Conekt mobile credentials/readers come as a smartphone application and hardware package. The user chooses a smartphone or smart card, and distributes via access control software. Multiple credentials can fit into a single smartphone wallet app.

Request more info at www.securityinfowatch.com/12379327

FLIR

Booth #20043

The FLIR Saros DM-Series includes eight new VGA and QVGA resolution options. Capable of capturing video in complete darkness, bright sunlight, and through smoke, dust, or light fog, the cameras include a built-in 4K visible light camera alongside a thermal sensor. They integrate with the FLIR United VMS.

Request more info at www.securityinfowatch.com/21125093



Freeus

Booth #31087

Freeus will feature two mobile PERS certified for Verizon 4G LTE. Belle LTE mPERS features 30-day battery life and is certified on Verizon and AT&T 4G LTE. Belle+ LTE features fall detection, is certified on the Verizon 4G LTE

network and lasts up to 7 days per charge.

Request more info at www.securityinfowatch.com/12422460

FEATURED EXHIBITOR



ASSA ABLOY

Booth #8061

ASSA ABLOY will showcase its Aperio wireless technology across a broad range of locking solutions. Aperio is a global wireless platform that enables facilities to upgrade their security quickly, easily and affordably. It offers effortless integration with existing access control systems, as well as real-time communication and management capabilities. Aperio is available across a range of locking hardware from ASSA ABLOY Group brands, offering the flexibility to address a wide variety of applications. Now offering support for mobile access via Bluetooth Low Energy or NFC, the ASSA ABLOY Aperio wireless solution provides complete flexibility for your mobile access deployments.

Request more info at www.securityinfowatch.com/12023746

FEATURED EXHIBITOR



Uniview

Booth #13062

Uniview has enhanced its starlight series cameras with a line of cameras incorporating LightHunter, an innovative technology that delivers vivid color, appropriate brightness, and extremely clear images in ultra-low light. Cameras available include vandal-resistant dome cameras, WDR bullet cameras and PTZ domes. LightHunter solves the problem of cameras switching to black and white on low-light high resolution environments. Also included is Uniview's patented new-generation algorithm (U-ISP) noise reduction technology to improve Signal-Noise Ratio and reduce blur to increase sharpness.

Request more info at www.securityinfowatch.com/21125145



Gai-Tronics

Booth #12121

HUBBCOM IP Devices from Gai-Tronics offer general and point-to-point audio/video intercom, overhead speaker broadcasting, SIP telephone operation, and Web Portal access

for seamless communications between facility areas. The devices provide door entry, information, communications and control in manufacturing facilities, offices, warehouses, K-12/college campuses or on transit platforms.

Request more info at www.securityinfowatch.com/21069470



Genetec

Booth #26055

A self-service physical identity and access management system, Genetec ClearID enables employees and visitors to use an online portal to make access requests. By automating, it reduces bottlenecks

related to managing employee and visitor access. The cloud-based service works natively with Genetec Synergis access control security software.

Request more info at www.securityinfowatch.com/21092566

Gorilla Technology

Booth #33100

IVAR from Gorilla Technologies is an all-in-one edge AI surveillance solution which combines intelligent video analytics with VM. Its open API and verified integration with Milestone Xprotect bring existing systems into the video analytic era, with analytics including re-entry/wrong way detection, vessel detection and recognition, traffic violation detection, and more.

Request more info at www.securityinfowatch.com/12427205



Hanwha Techwin America

Booth #14079

Hanwha Techwin will showcase its latest PTRZ (pan, tilt, rotate, zoom) multi-sensor IP cameras, which feature motorized varifocal lenses and built-in IR illumination for each sensor. The cameras use less cable, conduit and mounting hardware and require fewer ports on the switch and VMS licenses due to a single IP connection.

Request more info at www.securityinfowatch.com/21094091



Identiv

Booth #L20

Cirrus is Identiv's cloud-based Access Control as a Service (ACaaS) solution. Users can control, manage, and update their Hirsch access control systems via a fast, simple-to-navigate web user interface. Dealers can now deploy ACaaS services with the full range of advanced Hirsch Velocity and Mx Controller-enabled features.

Request more info at www.securityinfowatch.com/21124969



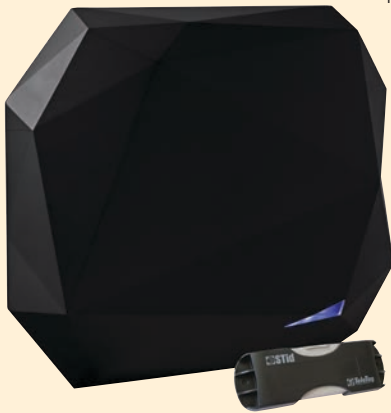
FEATURED EXHIBITOR

STid

Booth #5081

STid's Spectre is a long-range ultra-high-frequency (UHF) reader enabling fast vehicle identification at the gate with the highest security levels. The Automatic Vehicle Identification (AVI) solution combines high security levels based on the latest industry standards and

modularity, making it adaptable to any field scenario. Up to four antennas can be connected to cover security issues, including the management of a mixed fleet of vehicles, or to create distinct access control for four lanes of vehicles.



Request more info at www.securityinfowatch.com/12427430

FEATURED EXHIBITOR



3xLOGIC

Booth #23067

TRENDS is a cloud-based business intelligence (BI) tool from 3xLOGIC that ties exception-based reporting (EBR), video data and third party applications into an easy-to-use dashboard. It provides a clean, simple visual snapshot of a business. By leveraging intuitive icons and color groupings, it empowers the user to interpret vast amounts of disparate data more effectively and efficiently than ever. Reporting is completely customizable and information is presented in a format most effective to the user, enabling end-users to optimize their business across the board.

Request more info at www.securityinfowatch.com/21125133

IDIS

Booth #18059

Edge VA bullet and dome cameras from IDIS feature on-board analytics to boost efficiency of security operations in retail, banking and commercial settings. The dome models deliver full HD (1080p) resolution, two-way audio, IDIS Smart Failover protection against loss of data, true wide dynamic range, and more.



Request more info at www.securityinfowatch.com/21123173

InstaKey

Booth #2113

The RemoteLock OpenEdge CG from InstaKey is a WiFi-enabled smart lock that provides an easy way to manage, control and monitor access to IT closets, cash offices and other high-



security access points requiring PCI compliance.

It integrates with existing door readers and hardware, as well as RemoteLock EdgeState software.

Request more info at www.securityinfowatch.com/21124934

Inovonics

Booth #7097

The new EH4104R single zone fire RF receiver with relays and EH1115EOL single input fire RF transmitter from Inovonics meet UL 864 and California State Fire (CSFM) regulatory approvals. Using the equipment, a wireless link can be easily created for any fire switch with standard contacts.



Request more info at www.securityinfowatch.com/21086632

IONODES

Booth #3050

IONODES will unveil new cloud functionality integrated into its Secure Display Station line of video wall appliances, which display up to 32 ONVIF IP cameras on up to two HD monitors without the use of a PC. Built-in digital signage displays security messages, promotions and ads in any tile.



Request more info at www.securityinfowatch.com/21124669

IPVideo Corp.

Booth #28045

IPVideo Corp., will unveil new product features for its HALO Smart Sensor that is expected to disrupt how users are notified of emergencies, as well as making privacy areas longer be susceptible to security threats. The award-winning product features chemical, environmental and basic audible level sensors.



Request more info at www.securityinfowatch.com/21124115

FEATURED EXHIBITOR

Continental Access

Booth #12043

The CA4K Access Manager App from the Continental Access Division of NAPCO adds another level of convenient intuitive mobile control to its flagship CA4K Enterprise Integrated Access Control Software (v1.1 or higher). Now available on iTunes and Google Play for use with any smart device, it supports push notifications (or emails) in the event of an emergency. The app acts as a Virtual Enterprise Workstation in any security manager's pocket and provides easy management of threat levels, lockdown, status and personnel; as well as controlling doors (up to 32,000); wireless PIN/prox locks; elevators; and entryways.

Request more info at www.securityinfowatch.com/21123169



FEATURED EXHIBITOR

Bosch

Booth #11053

Bosch MIC IP ultra 7100i Cameras are rugged, constructed from anti-corrosive metal, and can function at -40°C to +65°C. With machine learning capabilities to train the camera, it can recognize user-specific target objects – such as moving and non-moving objects – to alert operators of unusual scene activity. The 4K UHD versions also provide extreme high-resolution for mission-critical applications, such as city surveillance and congested highways. This makes them ideal for monitoring highways, bridges, tunnels, ports, airport perimeters and more.

Request more info at www.securityinfowatch.com/21089937



IronYun

Booth #3053

IronYun will showcase the latest version of its AI NVR Video Analytics Platform, complete with more than 15 analytics functionalities, three deployment models (edge, on-premise and cloud), integration with all ONVIF IP-based cameras and third-party systems, and a mobile app to perform searches and receive alerts on-the-go.

Request more info at www.securityinfowatch.com/21124686



LenelS2

Booth #18019

LenelS2 OnGuard 7.6 enterprise security management system features enhancements to its access control platform, while also extending cloud compatibility and integration capabilities. Cybersecurity and compliance enhancements include use of the TLS 1.2 to encrypt communications; elimination of default passwords; as well as an updated Hardening Guide.

Request more info at www.securityinfowatch.com/21116789

Johnson Controls

Booth #20005

The Johnson Controls Illustra Pro Gen3 Bullet camera features new Smart Wide Dynamic Range that optimizes video quality while minimizing configuration time. Available with standard or telephoto lens and in megapixel resolutions of 3MP and 4K, it provides video images to match operational requirements and is ideal for medium and large-sized facilities.

Request more info at www.securityinfowatch.com/21124380

KBC Networks

Booth #29093

KBC's fiber optic range offers multi-mode and single-mode solutions for static and PTZ cameras; industrial data systems including RS-485, 232 and 422 telemetry; and single and multi-channel contact closure and Ethernet media conversion including Power over Ethernet. Solutions include simple point-to-point transmission links to to custom-build, multi-interface modems.

Request more info at www.securityinfowatch.com/21124699



LifeSafety Power

Booth #14115

LifeSafety Power's NetLink NLX Network Communication Module

is a remote monitoring device engineered to handle enterprise applications and specifications that require large numbers of network-managed outputs. It reduces network drops, wiring and hardware required for remote monitoring.

Request more info at www.securityinfowatch.com/21124687



FEATURED EXHIBITOR

Hikvision

Booth #18037

Hikvision's Performance Series Thermal Cameras take thermal imaging from niche to mainstream. Specifically designed for short-range detection, the cameras are best suited and priced for residential, commercial and industrial areas. The thermal-optical turret camera, DS-2TD 1217-2/V1, combines wide-angle thermal and optical cameras with thermal imaging-based fire detection, temperature monitoring, cigarette smoking detection, DeepInView intrusion detection and abnormal sound detection. The 160x120 vanadium oxide thermal detector provides outstanding thermal image quality upscaled to an output resolution of 320x240 with a dramatically downscaled cost.

Request more info at www.securityinfowatch.com/21078759



FEATURED EXHIBITOR

dormakaba

Booth #8053

dormakaba will be featuring the BEST Switch Tech platform, an affordable digital solution that makes it easy to extend electronic access control to applications previously not practical by offering a digital replacement for mechanical small format interchangeable cores (SFICs). Switch Core (pictured), will work wherever SFICs do, making it ideal for retrofitting electronic control into existing doors. Other products featured include Keyscan Aurora enhanced lockdown; Argus Swing Lane Barrier; WiQ Integrated wireless access control; Security Revolving Doors; and BEST Series Door Closers.

Request more info at www.securityinfowatch.com/21125177



LiftMaster

Booth #22117

The HDLSL24UL and HDFSL24UL smart commercial slide gate operators from LiftMaster feature a direct drive high-efficiency powertrain, custom gear box, and brushless motor engineered for up to 6 million cycles. Perfect for oversized gates, the HDLSL24UL moves gates up to 3,000 pounds and 75 feet in length.

Request more info at www.securityinfowatch.com/21124957



Morse Watchmans

Booth #14109

KeyWatcher Fleet from Morse Watchmans puts users in command of keys for vehicle distribution, comprehensive utilization, right-sizing of a fleet and more. Its software enables fleet managers to create user role-based "pools", or groups of vehicles, to assign each vehicle accordingly.

Request more info at www.securityinfowatch.com/21075223



Louroe Electronics

Booth #8038

TLO-A is a two-way communications device from Louroe featuring an active speaker for high-volume penetration and a microphone for superior sound capture in a single, weather-resistant housing. For

outdoor or large coverage applications, its omni-directional mic detects audio within a 30-foot diameter of the device.

Request more info at www.securityinfowatch.com/21124929

Mobotix

Booth #18117

The Mobotix M73 is an entire video surveillance solution housed within a single decentralized IoT device. Featuring three separate sensors, it can be fully customized to use optical, thermal, infrared, day/night, or audio functionalities simultaneously. Equipped with the MOBOTIX 7 Universal Plug-In platform, it can leverage several AI-based applications.

Request more info at www.securityinfowatch.com/21112816



National Monitoring Center

Booth #2071

Netwatch Proactive Video Monitoring (PVM) service from National Monitoring Center (NMC) uses smart analytics to identify suspicious activities while filtering out nuisance alarms. Within seconds, threats are presented to its intervention specialists, who provide a live audio warning and continued real-time audio and visual assistance to the authorities.

Request more info at www.securityinfowatch.com/21124954

FEATURED EXHIBITOR



PACOM

Booth #23067

The PACOM GMS multi-site security management platform provides integration between access control,

intrusion, video, intercom, and virtually any building management or security solution. It is designed to manage thousands of locations simultaneously through a single interface, while providing leading availability and redundancy. Features include: Powerful GUI; identity management; visual verification; alarm monitoring; remote managed services; graphics control; and more. It provides scalability and flexibility, whether its security management of 20 locations or more than several thousand locations simultaneously.

Request more info at www.securityinfowatch.com/21125140

FEATURED EXHIBITOR

Tane Alarm Products

Booth #14137

Tane Alarm Products has introduced its own series of Interlogix-compatible 319.5MHz wireless contacts, model TWC 319.5R. The contacts are designed to replace most of the Interlogix and Qolsys wireless alarm contacts operating on the 319.5 MHz frequency. The Honeywell- and 2GiG-compatible TWC 345R wireless alarm contact also operates on the 345MHz frequency. Both wireless alarm contacts feature a low-profile design and five-year battery life using a premium CR2032 battery. Tane Wireless Contacts will soon add a series of wireless products, including a PIR and other specialty offerings.



Request more info at www.securityinfowatch.com/21125333

Nortek Security & Control

Booth #20015

2GIG encrypted eSeries sensors from Nortek Security & Control include thin door/window, recessed door/window, outdoor, motion detector, glass break, keyfob remote, panic button, takeover module and more. Available for use with 2GIG eSeries control panels, they are based on next-generation security technologies that incorporate "hack-proof" encryption algorithms.

Request more info at www.securityinfowatch.com/21124717



PDQ Manufacturing

Booth #34063

The PdqSMART-STS wireless locking products and system from PDQ replace traditional keyed locks in a facility and enable mobile phone-based electronic access regardless of door type. The system requires no wiring, control panels or servers. The cloud-hosted portal offers audit trails, over-air firmware updates, AES 128-bit encryption and more.

Request more info at www.securityinfowatch.com/21124327



Panasonic

Booth #10037

Panasonic's new i-PRO AI Camera Series capitalizes on AI to deliver intelligence at the edge. The nine indoor and outdoor cameras are complemented by two software modules, and are capable of running advanced analytics at the edge. Features include intrusion detection, privacy masking and more.

Request more info at www.securityinfowatch.com/21124315



Parabit Systems

Booth #16132

Parabit Visitor Management Kiosks enable users to manage the entire visitor journey and know exactly who is in a building at all times, thanks to comprehensive visitor registration, notifications, tracking, reporting and integration with building access control systems. The kiosks integrate with a variety of software applications.

Request more info at www.securityinfowatch.com/21125097



Premio

Booth #20136

Premio's RCO-6100 Rugged NVR Industrial Computer is a powerful edge machine dedicated for compute-intensive deployments in embedded IoT applications. It is configurable with Intel's 9th (Coffee Lake Refresh) Generation Core i3, i5, and also features a rugged fanless design and heatsink chassis to perform in harsh environments.

Request more info at www.securityinfowatch.com/21124681



FEATURED EXHIBITOR

Speco Technologies

Booth #23015

Speco Access is an embedded browser and app managed access control system that is affordable, feature rich and scalable. There is no software to be installed, and it is integrated with the supplier's NR Series recorders. It provides an innovative overall security solution of video surveillance plus an access control system with auto live camera pop up, viewing of a camera and event tagging, door control and threat level lockdown. As an out-of-the-box ready integrated system, dealers can provide value-leading capabilities without a premium investment.



Request more info at www.securityinfowatch.com/21125175

FEATURED EXHIBITOR



HID Global

Booth #11063

Signo is a signature line of access control readers by HID Global that offers security with a sleek, upscale design. Highly versatile, they support the widest range of credential technologies, including HID Mobile Access. This new reader line delivers ultra-secure cryptographic keys on certified secure element hardware. It is connected to the future with out-of-the-box OSDP support for secure bi-directional communication, and is designed to connect and manage readers remotely. Reliable across a vast array of use cases, it provides optimized read range for powerful access control.

Request more info at www.securityinfowatch.com/21125128



Prodatakey (PDK)

Booth #20125

ProdataKey (PDK) will introduce two new door controllers – the eight-door “eio+” and the two-door “dio.” The dio unit includes a power monitoring feature that alerts to any power-related issues. The larger eio+ offers the advantage of consolidated power and multi-door control from a single enclosure.

Request more info at www.securityinfowatch.com/21124874

ProTech

Booth #8050

MAPS (Monitoring Application for Perimeter Supervision) software from ProTech enables users to alert security personnel and first responders of perimeter intrusions. The server-based software can be set-up with navigation menus or as a tree structure with the ability to click and zoom in on a specific area.

Request more info at www.securityinfowatch.com/21124682



Raslient Systems

Booth #9109

PS390e is Raslient System's third-generation No-Frame-Dropped (NFD) storage system purpose-built for video surveillance and AI applications. It offers up to 1.44 PB of fully redundant storage in a single 4U chassis. It offers up to 1.63 PB of unified storage with RAID options including 5, 6, 10, 50 and 60.

Request more info at www.securityinfowatch.com/21124926



Razberi Technologies

Booth #13121

Razberi Monitor is a cloud-based platform that enables integrators to offer managed services and build recurring monthly revenue while remotely managing customer sites with less staff and fewer truck rolls. Integrators can monitor and maintain the health and cybersecurity of multiple customer sites.

Request more info at www.securityinfowatch.com/21124684

RemoteLock

Booth #6040

EdgeState from RemoteLock is a cloud-based platform for access control and smart lock management. Users can manage access control as well as talk to each smart lock. It can aggregate various brands of smart locks and hardwired access control panels while simultaneously managing varying credential types.

Request more info at www.securityinfowatch.com/21079370



Rhombus Systems

Booth #24137

A suite of IoT sensors from Rhombus Systems, including asset tag, door sensor and environmental sensor (pictured), use the company's security cameras as a local intelligence hub to capture sensor events, corresponding video footage, and data of the physical environment – simplifying an organization's physical security infrastructure.

Request more info at www.securityinfowatch.com/21124161



Safety Technology International (STI)

Booth #30044

The UL/cUL Listed Global ReSet Series from STI is ideal for use as a button to call police, alert of an emergency, allow authorized exits, to lockdown a building, and more. The indoor/outdoor resettable push-button simulates break glass activation without the broken glass.

Request more info at www.securityinfowatch.com/21124137

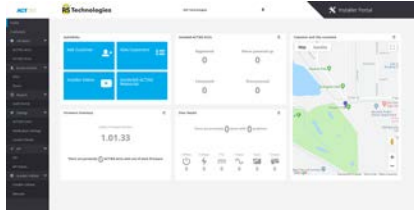


RS2 Technologies

Booth #25109

The ACT365 Cloud-based Access Control and Video Management Solution from RS2 enables integrators to troubleshoot issues from a mobile device or web browser to determine whether a site visit is necessary. It provides both access control and video management in a web-based platform.

Request more info at www.securityinfowatch.com/21106614



Safe Zone

Booth #2045

The Safe Zone Gunfire Detection System combines infrared and sound detection technologies with cloud-based data analysis to respond within 10 seconds to an active shooter situation, automatically communicating with key personnel including first responders, school administrators and parents. By alerting authorities quickly, these incidents can be ended sooner.

Request more info at www.securityinfowatch.com/21069600



The card that never sleeps

Micron® Industrial microSD Cards 32GB-1TB

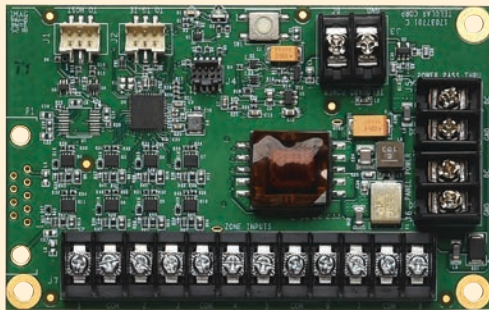
- 3 years 24x7 recording
- 2M hours MTTF
- Lifetime health monitor
- Up to 960 TBW
- Frame capture optimization
- Card lock/unlock for data security

Edge storage for surveillance IP cameras

Micron®

Request information: www.SecurityInfoWatch.com/12355256

FEATURED EXHIBITOR



Telguard

Booth #18109

The TG-PEM is Telguard's newest UL-listed accessory compatible with its TG-7 Series communicators. Its power module enables integrators to run the TG7-FS off of 24-volt panel power, so an electrician is not needed to install an outlet. A zone expander enables integrators to expand the TG-7 intrusion system to eight highly configurable zones. In a commercial fire installation scenario where there is no DACT, the TG-PEM can be used to connect the TG-7FS to the FACP outputs to deliver fire alarm, trouble and supervisory events.

Request more info at www.securityinfowatch.com/21125164

FEATURED EXHIBITOR



DoorKing

Booth #25041

DoorKing's new model 2112evolve cloud-based Video Telephone Entry System can store virtually an unlimited number of phone numbers and entry codes. Operating on a cellular network or internet connection, companion DoorKing apps are available free of charge for both Android and iOS that provide video calling and relay control, programming, event logging and more for system administrators. It also features broadcast calling, which allows up to four phones to ring simultaneously.

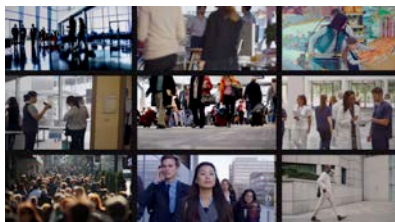
Request more info at www.securityinfowatch.com/21125136

SAFR by RealNetworks Inc.

Booth #1097

SAFR by RealNetworks transforms a live video stream into a channel for real-time response and actionable insights. The product uses facial recognition and AI to instantly recognize persons of interest, automate watchlists and deliver custom real-time alerts. Hours of video can be analyzed in seconds.

Request more info at www.securityinfowatch.com/21075512



Salto Systems

Booth #25071

The SALTO NEO electronic cylindrical lock is designed for doors where an electronic escutcheon is not required. It can be installed on standard doors, server racks, gates, cabinets, electric switches, etc. IP66 rated and weather-resistant, it includes SALTO Virtual Network (SVN), SVN-Flex, NFC/BLE mobile and BLUENet Wireless.

Request more info at www.securityinfowatch.com/21078608

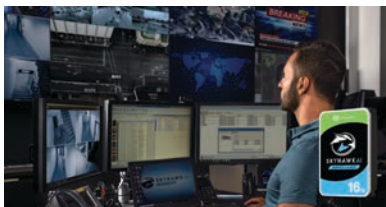


Seagate Technology

Booth #10053

Seagate's 16TB-capacity SkyHawk AI surveillance hard drive stores more than 10,000 hours of HD video while simultaneously capturing from up to 64 HD cameras and 32 AI streams. The drive is optimized for NVRs, tuned for 24/7 workloads, and is equipped with ImagePerfect AI firmware to minimize dropped frames and downtime.

Request more info at www.securityinfowatch.com/21115624



Securitech

Booth #19131

Securitech's Safebolt retrofits to existing cylindrical lever locks to barricade a classroom door. A press of its red button instantly triggers a 1-inch locking bolt. No power, batteries or wiring is required, and it can be unlocked by a key from the exterior, meeting all NFPA and IBC codes.

Request more info at www.securityinfowatch.com/12427225

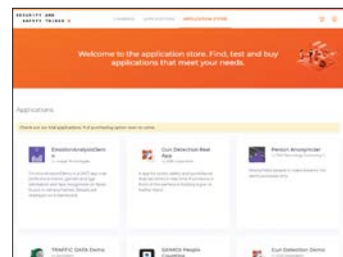


Security and Safety Things

Booth #20060

The open IoT ecosystem from Security and Safety Things offers a range of applications for commercial cameras, leveraging Artificial Intelligence. These applications, provided by third party development partners, offer actionable insights and intelligence to building and site managers, as well as operators in a variety of different verticals.

Request more info at www.securityinfowatch.com/21124963



Security Door Controls (SDC)

Booth #20109

The SDC EntryCheck E75 Privacy is a low-cost, indoor/outdoor standalone electronic battery-powered lock that provides controlled access for basic and multi-level high security requirements. The privacy function locks the keypad, and a red LED flashes to indicate room occupation. Turning the inside lever deactivates the privacy function.



Request more info at www.securityinfowatch.com/21124868

Sielox

Booth #12109

The new Sielox 2700 Access Controller delivers intelligence at the edge with on-board processing. Scalable to accommodate up to 34 doors, the product features an IoT compatible, investment-grade platform and executes virtually all critical access functions with on-board database back-up.



Request more info at www.securityinfowatch.com/21124726

Silent Sentinel

Booth #31045

Silent Sentinel's Aeron Searcher is a cooled (MWIR) thermal camera with a 15-300mm zoom lens and HD visible camera. It is a compact, rugged, continuous rotation PTZ camera for marine, harsh and challenging environments. Features include anti-fog, anti-haze and image stabilization capabilities and IR or white light illumination options.



Request more info at www.securityinfowatch.com/21125109

simPRO

Booth #4054

simPRO is a trusted cloud-based software solution that enables security businesses to manage multi-stage projects in real time, track inventory, automate scheduling and dispatching, manage billing and payment processing, generate reports, and more. Easily connect office operations to service in the field.



Request more info at www.securityinfowatch.com/12399866

Rely on STI®



...for a wide range of buttons & switches

Global ReSet and Stopper® Station Buttons

STI has the right button, right now. Tough polycarbonate buttons in choice of break glass or push, color, phrase, activation, and with or without a cover.

- Any language
- Super tough polycarbonate
- Color options
- Protective covers
- Resettable button simulates break glass activation
- Push button offers several activation choices



Learn more at www.sti-usa.com/sd73 or call 248-679-9898

3020

Request information: www.SecurityInfoWatch.com/10214881

SnapAV

Booth #25051

The WattBox 250 from SnapAV provides IP power, professional-grade surge protection, and remote monitoring in a small form factor. The UL-listed power management device includes two individually controlled outlets and works with Wi-Fi or a wired connection. Its OvrC remote management platform enables remote reboot and troubleshooting.

Request more info at www.securityinfowatch.com/21090093



Transition Networks

Booth #1103

The high-density SM48TAT4XA-RP 48-Port Managed Gigabit PoE+ Switch from Transition Networks offers 176 Gbps switching capacity. Ideal for networks using high-resolution IP cameras, wireless access points or VoIP phones, the single rack unit provides 48 copper ports and four dual-speed 1G/10G SFP+ slots.

Request more info at www.securityinfowatch.com/21124660



SpotterRF

Booth #32051

The 3D-500 radar system from SpotterRF creates a full-dome drone detection area from 0 to 90 degrees in the vertical and 360 degrees in the horizontal with a single unit that weighs 12 pounds. The radar measures latitude, longitude and altitude of all aerial targets in a 1 km-wide hemisphere dome.

Request more info at www.securityinfowatch.com/12431079



TRENDnet

Booth #21125



TRENDnet's Gigabit PoE+ Smart Surveillance Switches are integrated with camera management functions that are easily accessible within the surveillance switch's user interface. They come in two models, the 18-Port Gigabit PoE+ Smart Surveillance Switch (TPE-3018LS) and the 12-Port Gigabit PoE+ Smart Surveillance Switch (TPE-3012LS).

Request more info at www.securityinfowatch.com/21124120

STOPware

Booth #24130

For visitor self-registration, STOPware has introduced the Pioneer CYPRUS kiosk, which features a 15-inch all-in-one touchscreen. Its versatile design takes up minimal counter space or can be wall-mounted. It includes both a barcode reader and webcam, and can be combined with the PassagePoint visitor management system.

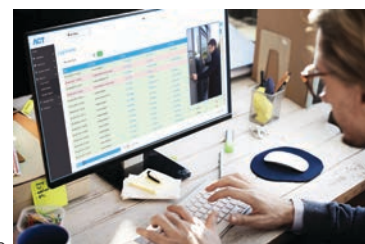
Request more info at www.securityinfowatch.com/21124864



Vanderbilt Industries

Booth #5065

Vanderbilt ACT365 cloud-based access control and video management solution that enables users to remotely control and manage



access to facilities without a dedicated IT department. It can be scaled to accommodate additional doors or cameras, as well as view live and recorded video, manage users and more.

Request more info at www.securityinfowatch.com/12400279

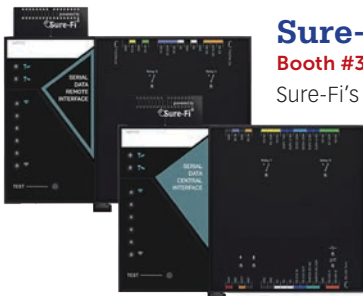
Sure-Fi

Booth #32107

Sure-Fi's Serial Pro Wireless Bridge works with RS-232 and RS-485 with two relay outputs (Wet or Dry). With built-in acknowledgments and retries, credentials are securely transmitted over

900 MHz Radio from endpoint to controller. Transmit to a control panel a mile away or 50 miles line of sight.

Request more info at www.securityinfowatch.com/21124922



Video Mount Products

Booth #1046

The ERWEN-6E 19-inch wall rack enclosure from VMP works with all standard 19-inch rack equipment and accessories. Features include: adjustable front and rear rails, removable hinged back panel, reversible glass front door, 16 inches of usable depth, load capacity of 120 lbs., and more.

Request more info at www.securityinfowatch.com/12280223



Telecor

Booth #16137

Telecor will showcase an advanced high definition 22-inch LCD display that delivers full color, customizable HD graphics and text. The display is compatible with the company's TII/XL and eSeries product lines and will communicate emergency alerts, routine digital signage and synchronized time throughout a facility.

Request more info at www.securityinfowatch.com/21125100



Viking Electronics

Booth #6044

Discreetly place emergency calls with the PB-3-IP Panic Button from Viking Electronics. Designed for VoIP SIP systems, the PoE-powered unit features an on-board relay for activating security cameras, emergency lighting, or any device triggered by a dry-contact. It can also receive automatic firmware updates.

Request more info at www.securityinfowatch.com/21121625

Vivotek

Booth #12089

Vivotek will demonstrate the MS9321-EHV 20MP 180-degree panoramic network camera with VAST 2 technology, featuring four 5MP CMOS sensors at 30fps at all resolutions.

Other features include: Trend Micro IoT Security, a weather-proof IP66-rated and vandal-proof IK10-rated housing, and integrated Smart IR II technology with adaptive IR.

Request more info at www.securityinfowatch.com/21123010



Yale

Booth #32081

The Yale Pro SL (YRD136) is a key-free keypad deadbolt for professional installers. It offers built-in Z-Wave Plus (500 Series) and integrates with most popular home alarm systems. Installation on any standard deadbolt takes only minutes and built-in Z-Wave Plus enables a single-step smart home enrollment process.



Request more info at www.securityinfowatch.com/21124294

WeSuite

Booth #23131

WeSuite will launch a new "Sales Intelligence" reporting module at ISC West as part of its WeOpportunity CRM software. The module offers pipeline and sales data analysis, providing insights and actionable intelligence to guide smarter business decision-making. It will be sold as a licensed, add-on module.

Request more info at www.securityinfowatch.com/21124333



ZKTeco

Booth #26089

The SF1008-WP from ZKTeco is a water and vandal resistant facial recognition terminal that is IP68 and IK04 rated. It holds up to 50,000 users, stores one million transactions, and matches faces in less than 0.3 seconds in both extreme lighting and severe rain conditions.

Request more info at www.securityinfowatch.com/21124336



FCC ID: 24LTX-TWC3195R
IC: 24829-TWC3195R
Model: TWC 3195R

TANE WIRELESS

CONTACTS[®]

FCC ID: 24LTX-TWC345R
IC: 24828-TWC345R
Model: TWC 345R

COMPATIBLE WITH INTERLOGIX 319.5MHz

TANE WIRELESS[®]

Door & Window Sensor

TWC 319.5R

319.5MHz

LOWEST PROFILE SENSOR

Compatible with most Interlogix[®] & Qolsys[®] systems

WWW.TANEALARM.COM

800-852-5050

COMPATIBLE WITH INTERLOGIX 319.5MHz

TANE WIRELESS[®]

Interior Motion Detector

TWC PIR345

345MHz

PET IMMUNE

Compatible with most Honeywell[®] and 2GIG[®] systems

WWW.TANEALARM.COM

800-852-5050

TANE WIRELESS[®]

Door & Window Sensor

TWC 345R

345MHz

LOWEST PROFILE SENSOR

Compatible with most Honeywell[®] and 2GIG[®] systems

WWW.TANEALARM.COM

800-852-5050

TANE ALARM PRODUCTS 906 Jericho Tpke. New Hyde Park, NY 11040 800-852-5050 info@tanealarm.com

Request information: www.SecurityInfoWatch.com/10215295