

## Power Supplies

### PoE+ Managed Ethernet Switch

Antaira Technologies' LMP-0501 and LMP-0501-24 series is a 5-port industrial PoE+ managed Ethernet switch, with 48-55VDC high voltage power input (LMP-0501) and 12-36VDC low voltage power input with a built-in voltage booster (LMP-0501-24). Each unit is designed with four 10/100Tx Fast Ethernet ports that are IEEE 8023.at/af compliant (PoE+/PoE). **Request more info at [www.SecurityInfoWatch.com/12037962](http://www.SecurityInfoWatch.com/12037962)**



### Ethernet over Coax/PoE Adapters

Altronix eBridge Ethernet over Coax/PoE Adapters transmit IP video/data and power over coaxial cable, enabling legacy infrastructure to support PoE and PoE+ cameras and access control devices. It transmits video/data and power up to 1,500 feet without the need for repeaters and provides auto detection and protection of legacy non-PoE devices. **Request more info at [www.SecurityInfoWatch.com/11621192](http://www.SecurityInfoWatch.com/11621192)**



### PoE Injectors and Extractors

Securitron's AQE Series power supplies includes Power over Ethernet (PoE) Injectors, Extractors and Rack Mount Injectors. The AQE15 and AQE30 are single-port PoE MidSpan Injectors designed to power PoE devices such as access control door controllers, DC IP cameras and other PoE equipment from a non-PoE source. For remote manageability, the AQE250R and AQE500R are perfect for a centralized system. These 16 port, PoE Rack Mounted Injectors power up to 32W per port with 10/100/1000 Base-T Gigabit support. **Request more info at [www.SecurityInfoWatch.com/12037912](http://www.SecurityInfoWatch.com/12037912)**



### Cat6, 5e and 5 PoE Injectors

L-com has added a series of Cat6, Cat5e and Cat5 PoE Injectors with 56VDC power supplies to address applications where power and data are required to connect end-devices over long distances. The 56VDC power supplies shipped with the injectors can be used for 48VDC PoE applications that involve long cable runs. The power output compensates for any voltage loss in the cable over long distances, and is ideal for powering multiple PoE devices or high power PoE devices. **Request more info at [www.SecurityInfoWatch.com/12037956](http://www.SecurityInfoWatch.com/12037956)**



## Video Surveillance

### Ceiling-Based Monitor Mount

Video Mount Products' PDS-LCM2B dual flat panel ceiling mount adapter accepts flat panels up to 80 inches. The unit can now be used for panels from as small as 37 inches all the way up to 80 inches, and will accommodate a 200 x 200 hole pattern up to 860mm x 500mm. The flat panel displays can be mounted back-to-back with a combined weight of up to 360 lbs. **Request more info at [www.SecurityInfoWatch.com/10938411](http://www.SecurityInfoWatch.com/10938411)**



### Fisheye Network Camera

Hikvision's DS-2CD2942F Fisheye Network Camera, the latest addition to its "Easy IP" range of cameras, is ideal for convenience stores, hotels, restaurants, offices and other small-to-medium enterprises. It incorporates a high-quality lens and 4-megapixel detector in a discrete, ultra-compact design small enough to be inconspicuous on any ceiling yet provides situational awareness for entire rooms. Features include panoramic view with multi-view de-warping and digital PTZ, on-board storage of up to 64 GB and choice of Ethernet or 802.11n Wi-Fi connectivity. **Request more info at [www.SecurityInfoWatch.com/12029081](http://www.SecurityInfoWatch.com/12029081)**



### Full HD IP Zoom Camera

Moxa's VPort 56-2MP camera is a Full HD 1080p (1920 x 1080) IP zoom camera engineered to withstand a -40° to 167° F temperature range without a cooling fan. Offering long-term durability and reduced maintenance costs, it is tailored for use indoors and outdoors, including long-distance remote site monitoring and harsh industrial locations. The camera can be transformed into an IP positioning system with PTZ capability and two-way audio using an optional built-in fiber interface and PT scanner accessory. **Request more info at [www.SecurityInfoWatch.com/12028170](http://www.SecurityInfoWatch.com/12028170)**



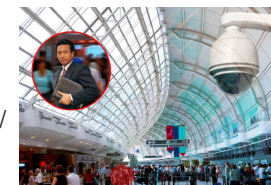
### PTZ Camera with 5K Optical Zoom

Digital Watchdog's MPTZ5X camera is a triple codec PTZ network camera that provides 1080P megapixel resolution at 30 frames per second. It includes the supplier's MEGApix IP camera technology, and comes in 2.1MP in both flat dome and flush mount models. Advanced features include True Day/Night, 3D-DNR and WDR, two-way audio and sensor in/out interface. PoE and a Micro SD card port boost ease of installation and management. **Request more info at [www.SecurityInfoWatch.com/12037857](http://www.SecurityInfoWatch.com/12037857)**



### Analog HD PTZ Cameras

Honeywell's newest analog HDZ PTZ camera offers image quality and features comparable to the line's IP cameras, including indoor/outdoor zoom and 360-degree capabilities. The cameras provide up to 1080p resolution, 360-degree continuous rotation function and a zoom lens, ensuring sharp clarity at any depth of field. All HDZ cameras are True Day/Night PTZ cameras equipped with Wide Dynamic Range — ideal for environments with high contrast and changing light conditions. **Request more info at [www.SecurityInfoWatch.com/12034135](http://www.SecurityInfoWatch.com/12034135)**



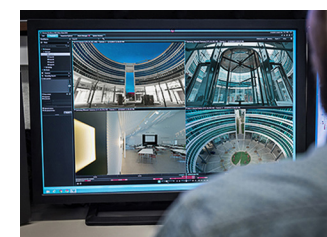
### IP Camera Lines

Bosch Security Systems' IP 2000, IP 4000 and IP 5000 camera families make it easy for small and medium-sized organizations to set up professional surveillance solutions. The IP 5000 family offers resolutions up to five megapixel. The IP 4000 family offers 720p resolution. Additionally, the IP 2000 family includes two-in-one solutions that combine a built-in passive infrared (PIR) sensor and a 720p HD IP video surveillance camera. **Request more info at [www.SecurityInfoWatch.com/12037939](http://www.SecurityInfoWatch.com/12037939)**



### High-Speed PTZ Dome Camera

Pelco by Schneider Electric's Spectra Professional Range high-speed PTZ dome cameras include a 1080p high-resolution camera, built-in analytics, durable construction and a powerful zoom lens. The pan/tilt drive improves on previous generations from the Spectra family and can now pan around an area at up to 430 degrees per second and with a 0.1 degree accuracy. Non-environmental models are capable of operating over IP networks with adherence to the 802.3 at PoE+ network standard. **Request more info at [www.SecurityInfoWatch.com/12036272](http://www.SecurityInfoWatch.com/12036272)**



### Scalable VMS

Siemens has introduced Siveillance Video Management Software in partnership with Milestone Systems. The system is offered in three versions: VMS 100 supports up to 128 cameras and is suitable for small and medium-sized facilities; VMS 200 meets the demands of centrally managed systems with the high scalability requirements typical of major industrial facilities; and VMS 300 is for systems distributed over multiple locations. **Request more info at [www.SecurityInfoWatch.com/12037960](http://www.SecurityInfoWatch.com/12037960)**



### Upgraded VMS

WavestoreUSA's V5 Video Management Software, V5.48, features upgrades including new vector PTZ joystick commands, operability enhancements and event integration for GANZ cameras. It also provides better management for network interfaces. **Request more info at [www.SecurityInfoWatch.com/12029209](http://www.SecurityInfoWatch.com/12029209)**

## Access Control

### Proximity Reader

Farpointe Data's P-900 proximity reader lets customers access a variety of up to 20-inch (508 mm) read range applications, from the parking lot to an inside door. With the reader, users can deploy Farpointe's Pyramid Series proximity cards and tags as well as support certain legacy HID and/or AWID 125-KHz proximity cards and tags. The reader is IP67 rated.

Request more info at [www.SecurityInfoWatch.com/12037946](http://www.SecurityInfoWatch.com/12037946)



### Access Control Management Software

Secura Key's SK-NET Version 5.20 Access Control System Software features system lockdown and

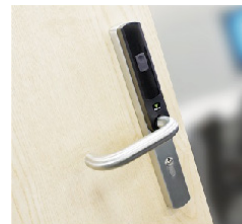
real-time door status reporting so users can lock or disable groups of doors with a single command in order to react to internal or external threats. These features work with the supplier's SK-ACPE-LE or NOVA.16 (SK-MRCP) access control panels and Smart Readers.

Request more info at [www.SecurityInfoWatch.com/12024576](http://www.SecurityInfoWatch.com/12024576)

### IP Video Intercoms

Aiphone's IX Series IP Video Intercom system enables users to easily identify visitors or assist individuals during emergencies. The intercoms are network-based, all-in-one communication and security control systems. Features include video identification, emergency call queuing, ONVIF video streaming and paging.

Request more info at [www.SecurityInfoWatch.com/12037936](http://www.SecurityInfoWatch.com/12037936)



### Wireless Lock

The Net2 PaxLock from Paxton Access is a secure wireless, battery-operated electronic lock that works with Paxton's Net2 software to deliver networked access control for easy management. Product

installation is easy - just remove the existing cylindrical lock and replace it with the product. No separate power supply or cables are required. Ideal applications include schools and universities, commercial buildings and healthcare facilities.

Request more info at [www.SecurityInfoWatch.com/12036283](http://www.SecurityInfoWatch.com/12036283)

### Residential NFC Deadbolt

Yale Locks & Hardware introduced the first NFC residential door lock designed for the U.S. market, operated with the tap of a smartphone app, at the recent CES show. The Yale Real Living NFC Deadbolt replaces conventional keys with digital keys accessed through the Yale Digital Keys app for NFC-equipped Android mobile devices. An app allows homeowners to unlock doors, send keys to others, control when others have access, get a message when someone enters and more.

Request more info at [www.SecurityInfoWatch.com/12032037](http://www.SecurityInfoWatch.com/12032037)



### Two-Door Access Control System

Camden Door Controls has introduced the CV-602 M-PROX2 two-door proximity access control system. An ideal upgrade to key-pads, the system provides access scheduling and an event audit trail. It consists of a small controller (installed on the secure side of the facility), and vandal- and weather-resistant mullion mount proximity readers. Enroll up to 2,000 users with both individual and batch card/tag enrollment. Other features include latching or timed door open, and anti-pass back alarm.

Request more info at [www.SecurityInfoWatch.com/12031987](http://www.SecurityInfoWatch.com/12031987)

