

# BIG BOOK

[www.SecurityInfoWatch.com](http://www.SecurityInfoWatch.com)
**THE SECURITY INDUSTRY'S PRODUCT GUIDE**

## SARGENT Passport 1000 IP-Enabled Campus Access Control Locks

SARGENT Passport 1000 P1 and P2 Power over Ethernet (PoE) and WiFi locks leverage existing network infrastructure to provide advanced security and easier, more cost-effective installations. Designed specifically for the campus environment, the IP-enabled access control locks feature HID® multiCLASS SE™ technology for a future-proof solution.

With simultaneous support for multiple credentials, they offer an easy migration path to higher security credentials and NFC mobile access.

Recognized for its contribution to sustainable buildings, the Passport P1 re-uses existing IEEE 802.3af PoE infrastructure, streamlines the installation process, reduces costs and components, and minimizes power consumption. The Passport 1000 P2 uses IEEE



802.11b/g/n WiFi technology, completely eliminating any wiring, significantly reducing installation time and enabling access control in more locations.

Combined with ASSA ABLOY's PERSONA Campus™ software or with approved third party software, Passport 1000 locks integrate seamlessly into transactional and housing systems, providing comprehensive, reliable access control for the campus environment. They integrate all standard access control components into a single device — ANSI/BHMA Grade 1 lock or exit device, controller, card reader, door position switch and Request-to-Exit sensor — and are available in mortise lock, cylindrical lock or exit device configurations.

**Request more information:**  
[www.securityinfowatch.com/10216599](http://www.securityinfowatch.com/10216599)

**SARGENT**
**ASSA ABLOY**
[www.intelligentopenings.com/campus](http://www.intelligentopenings.com/campus)

## Bullet-Style Network Camera with Integrated IR from Axis

Designed for monitoring entrances, exits and perimeters, the AXIS Q1765-LE Network Camera is a slim, bullet-style, outdoor-ready network camera with 18x optical zoom and auto-focus. It delivers SMPTE-compliant HDTV 1080p video in multiple, individually configurable H.264 and Motion JPEG video streams.

AXIS Q1765-LE can cover great distances providing wide overviews and detailed images for identification purposes. With four built-in infrared (IR) LEDs, this bullet-style network camera casts enough infrared light in darkness to allow the camera to see at least 50 ft. away in the widest field-of-view and up to 130 ft. in full tele view. This intelligent, built-in IR illumination automatically adjusts its beam to match the camera's field-of-view, making it especially beneficial for installations requiring



ing around-the-clock surveillance without additional artificial lighting.

The compact AXIS Q1765-LE is lightweight yet tough. The camera is IP66/NEMA 4X-rated, making it resistant to water and dust.

Arctic Temperature Control allows reliable start-up in temperatures ranging from -40°F to 122°F, making AXIS Q1765-LE perfect for installations in places with

challenging weather. The camera is easy to install thanks to its light weight design, one-cable installation, support for Power over Ethernet and AC/DC power. In addition, Axis' unique Corridor Format also allows for effective monitoring of long, 9:16 vertical scenes, such as highways and city streets for traffic monitoring and fence lines for perimeter security.

**Request more information:**  
[www.securityinfowatch.com/11191614](http://www.securityinfowatch.com/11191614)

**AXIS**  
COMMUNICATIONS  
[www.axis.com](http://www.axis.com)

## Nitek's Etherstretch IP over Coax Product Line

Nitek's continuously evolving Etherstretch product line consists of infrastructure products necessary to build an enterprise based IP video system utilizing existing coaxial cabling.

Specifying and selecting the appropriate IP over coax products necessary for your CCTV migration projects can be a daunting process. Nitek has simplified the product selection process by introducing a new "System Selection Configuration Calculator".

To access this intuitive tool from our website simply click on the support tab found on the Home page. The "System Selection Calculator" quickly builds a bill of materials and calculates the PoE wattage available for the connected edge devices.

Downloading spec sheets, manuals, CAD drawings and other associated documents are simply a click

**EtherStretch™**  
IP Cameras Over Coax


away and includes an integrated e-mail and print function.

**Request more information:**  
[www.securityinfowatch.com/11237664](http://www.securityinfowatch.com/11237664)

**NITEK**  
Security Transmission Solutions  
[www.nitek.net](http://www.nitek.net)

## Bolide's iCube All-in-One Wifi IP Camera

Bolide's iCube Wifi network camera is the latest addition to the iPac series and loaded with features including wireless connection, built-in SD card for recording, two-way audio communication, high power IR for night operation and innovative PIR for accurate motion detection. With a built-in advanced CPU and web server, iCube offers a complete day and night monitoring system for homes, offices and large-scale applications. Featuring simple installation and user friendly web-based interface, consumers can easily integrate the iCube into an existing network and view the streaming video from a PC, notebook, as well as access with their smart phone such as Apple or Android smart phone.

If quality is what you are looking for, iCube is your best choice. Unlike other VGA cameras, iCube comes equipped with an advanced image sensor that delivers not only crisp clear images but

**iPac™**  
The Ease of Plug and Play.  
ONVIF


also 720p high resolution for your surveillance needs.

iCube is also built with an advanced PIR Motion Alert System — Passive Infrared that can detect objects more accurately compared to traditional motion detection.

With the Motion Alert System, iCube can easily capture the intruder by activating the attractive alert sound when motion is detected. With the help of IR, this camera is perfect for night operation and delivers clear high resolution images 24/7. With the built-in web server, iCube allows you access to the most common activities, such as viewing live video, playback your recordings, exporting videos and taking snapshots with a touch of single button. iCube is a small camera loaded with tons of features for all your surveillance needs.

**Request more information:**  
[www.securityinfowatch.com/10836423](http://www.securityinfowatch.com/10836423)


**BOLIDE**  
TECHNOLOGY GROUP  
[www.bolideco.com](http://www.bolideco.com)

# OUR **ONE BOX** SOLUTION SERIES...

## 4100



3 HOUR FIRE RATED



## 4850

HANDLES  
1/2" AND  
3/4" LATCHES



### ...DEFINES FLEXIBILITY.



CYLINDRICAL,  
MORTISE,  
RIM PANIC --  
ONE STRIKE!



OUTDOOR  
RATED

## EN400CMRP

SMALLEST STRIKE  
IN THE WORLD



## 323478LC

MAKE YOUR 4850 INSTALLS A BREEZE  
GO TO. [WWW.TRINEONLINE.COM/4850ITL.PHP](http://WWW.TRINEONLINE.COM/4850ITL.PHP)

Request information: [www.securityinfowatch.com/10215438](http://www.securityinfowatch.com/10215438)

[WWW.TRINEONLINE.COM](http://WWW.TRINEONLINE.COM)



**TRINE**  
ACCESS TECHNOLOGY.



# HDEExpress

## Plug and Play NVR

1 **CONNECT**

2 **POWER UP**

3 **DONE!**



1080p Cameras

HDMI Monitor



**Simplicity done right!!!**

The **HDEExpress™ Plug-and-Play NVR** makes it possible for anyone to install and set-up a surveillance system with high-definition IP cameras, without the need for networking knowledge or additional hardware. Just connect up to 16 cameras\* to the unit's camera ports and HDEExpress does the rest! The unit's software automatically detects and configures the network cameras, while an internal PoE switch provides power to each of them.

- Real-time display and recording at 1080p resolution for superb image quality
- Compatible with many ONVIF compliant HD cameras
- Easy to understand dashboard for system diagnostics
- Free mobile app allows viewing and control from smart phones and tablets
- View and control multiple HDEExpress units from a single GUI with free multi-site software

Download the Free Mobile App!



Call Us:  
800.34.VICON

Visit Us Today at:  
[www.vicon-security.com](http://www.vicon-security.com)

HDEExpress is a trademark of Vicon Industries Inc. \* HDEExpress 4 port shown.

© 2013 Vicon Industries Inc. All Rights Reserved.

Request information: [www.securityinfowatch.com/10215670](http://www.securityinfowatch.com/10215670)

# TABLE OF CONTENTS

Winter 2013

Video Surveillance.....	Pages 6-11
Access Control & Door Hardware.....	Pages 12-19
Installation Tools & Equipment .....	Page 20
Enterprise Security & Integrated Systems .....	Page 21
Alarms, Intrusion Detection & Perimeter Security .....	Pages 22-23
Fire & Life Safety.....	Page 24
Keys, Key Controls & Automotive Accessories.....	Page 25
IT Security.....	Page 26
Emergency Communications & Mass Notification.....	Page 26

## ADVERTISER'S INDEX

Advertiser.....	Page #	Link to Request More Information
ASSA Abloy .....	B27	www.securityinfowatch.com/10212899
Cyberlock .....	B11	www.securityinfowatch.com/10215538
Detex Corporation.....	B21	www.securityinfowatch.com/10213445
DKS Door King Systems.....	B15	www.securityinfowatch.com/10213482
JLM Wholesale .....	B19	www.securityinfowatch.com/10214128
Kidde.....	B17	www.securityinfowatch.com/10547737
KSP .....	B26	www.securityinfowatch.com/10836464
March Networks .....	B7	www.securityinfowatch.com/10214308
Marks USA.....	B23	www.securityinfowatch.com/10214311
Monitoring American Alarm.....	B24	www.securityinfowatch.com/10490593
Napco Security Systems Inc.....	B5	www.securityinfowatch.com/10215125
Platinum Tools .....	B4	www.securityinfowatch.com/10216200
Samsung Techwin America .....	B13	www.securityinfowatch.com/10215711
Security Lock Distributors .....	B28	www.securityinfowatch.com/10215009
Select Products.....	B20	www.securityinfowatch.com/10215943
Strattec Security Corp.....	B25	www.securityinfowatch.com/10215947
Tane Alarm .....	B24	www.securityinfowatch.com/10215295
Theia Technologies .....	B9	www.securityinfowatch.com/10215759
Trine Access .....	B2	www.securityinfowatch.com/10215438
Vicon Industries .....	B3	www.securityinfowatch.com/10215670

## CYGNUS BUSINESS MEDIA

### The Big Book

is a publication of Cygnus Business Media  
3 Huntington Quadrangle, Suite 301N.,  
Melville, NY 11747 USA  
Phone: (631) 845-2700 • Fax: (631) 845-2736  
and is a supplement to *Locksmith Ledger*,  
*Security Dealer & Integrator* and  
*Security Technology Executive* magazines.

#### Editorial

Editor, *The Big Book*..... Paul Rothman  
Editorial Director..... Steve Lasky  
Editor, *Locksmith Ledger*..... Gale Johnson  
Editor, *Security Dealer & Integrator*..... Paul Rothman  
Editor, *Security Technology Executive*..... Steve Lasky

#### Art & Production

Art Director .....

Production Manager .....

#### Publishers

Group Publisher .....

#### Sales Contacts

East Coast Sales, *SD&I*, *STE*, *SIW*..... John Lacasale  
john.lacasale@cygnus.com  
West Coast Sales, *SD&I*, *STE*, *SIW*..... Bobbie Ferraro  
bobbie.ferraro@cygnus.com  
Midwest Sales, *SD&I*, *STE*, *SIW*..... Ryan Olson  
ryan.olson@cygnus.com  
Sales, *Locksmith Ledger*..... Ryan Olson  
ryan.olson@cygnus.com  
Classified Sales .....

erica.finger@cygnus.com

#### SecurityInfoWatch.com Contacts

Editor .....

joel.griffin@cygnus.com

#### Other Contacts

List Rental.....Elizabeth Jackson  
ejackson@meritdirect.com

#### Subscriptions Customer Service

Toll-Free (877) 382-9187; Local (847) 559-7598

#### Reprints

To purchase article reprints please contact Nick Iademarco at  
Wright's Media: 1-877-652-5295 ext.102 or by e-mail at  
niademarco@wrightsmedia.com

#### Cygnus Business Media

CEO .....

CFO .....

EVP Public Safety & Security .....

VP Events, Public Safety & Security.....

VP Production Operations.....

VP Audience Development.....

VP Technology.....

VP Human Resources .....



## Cut Strip Terminate Test

### Cable Prowler™ Test & Report in Color

The New Cable Prowler™ combines the functions of a high-end cable and length measurement tester, with the capability to identify link status/capability, and PoE detection. All of this is in full color and internal memory to save, download and output results. **P/N TCB300**  
Made in USA

More Info



Since 1997 we have delivered on one very straight forward mission... to develop, manufacture and source the absolute best possible solutions for the preparation, installation, hand termination and testing of wire and cable.



Visit [platinumtools.com](http://platinumtools.com) to see all our Cut, Strip, Terminate & Test solutions and a distributor near you. 805 384 2777

Custom Electronics

Security

Datacom

Telecom

Electrical

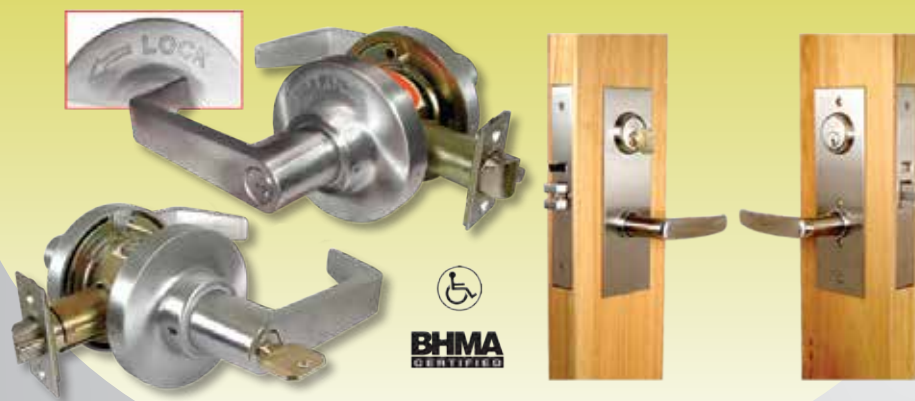
Request information: [www.securityinfowatch.com/10216200](http://www.securityinfowatch.com/10216200)

# SCHOOL SECURITY



## LocDown™ Solutions

### Mechanical Classroom Intruder Lock Down Solutions



### Electronic Standalone Locking Solutions w/ Local, Remote & Global Lock Down



### Small Access System w/ Global Lock Down



### Enterprise Integrated Access System w/ Global Lock Down & Threat Levels



**SAVI™**, the **Security Access-Control Vulnerability Index™** was created for security professionals to use as an objective, brand-agnostic audit tool to evaluate any school's access control vulnerability. On an easy electronic form, you simply enter the kinds of security they have in place, to both get their score, plus next-steps for improved security you can provide. **To become a certified SAVI professional. Call 1-800-ALA-LOCK for training today or email SAVI@alarmlock.com.**

**NAPCO**  
SECURITY TECHNOLOGIES, INC.

1-800-645-9445 • [www.napcosecurity.com](http://www.napcosecurity.com)

**MARKSUSA®**

LocDown™ is a trademark of Napco Security Technologies.

Continental **Access**  
A Napco Security Group Company



**ALARM LOCK**

Request information: [www.securityinfowatch.com/10215125](http://www.securityinfowatch.com/10215125)

## MAXPRO IP Video Surveillance Solutions from Honeywell

Honeywell's expanded MAXPRO family of IP video surveillance solutions includes a powerful and dynamic video management system, a full line of network video recorders, cloud-based Video Surveillance as a Service (VSaaS), and mobile apps. It is the first complete and flexible portfolio of IP video management hardware and software with solutions that are scalable for small to large applications.

The MAXPRO platform is fully open, incorporating PSIA and ONVIF standards, native integration for third-party cameras and encoders, and RTSP to ensure compatibility with most IP cameras.

MAXPRO is not a single product, but rather a platform on which everything is built. The single interface is the same regardless if you choose a 4 channel software-only option, or if you require thousands of channels via a hardware option.

### Features include:

- systems are interoperable with a wide range of surveillance cameras and encoders, allowing for an open platform;



- scalable solution that offers entry-level and enterprise solutions with the flexibility to add on as you go;
- a software-only option, allowing for the flexibility to source your own hardware;
- a cloud-hosted service that can be viewed anytime, anywhere;
- a mobile app for remote video viewing; and
- free software for multi-site viewing.

**Request more information:**  
[www.securityinfowatch.com/11237625](http://www.securityinfowatch.com/11237625)

# Honeywell

[www.honeywellvideo.com](http://www.honeywellvideo.com)

## ComNet's Distance-Extending Ethernet over UTP/COAX SFP

**CopperLine SFP-CL fits all Ethernet SFP Sockets and Extends Distances to 3,000 Ft.**

ComNet Communication Networks of Danbury, Connecticut, is introducing a unique SFP (Small Form Factor Pluggable) device that can be used in any Ethernet device, and can extend distances over COAX or UTP cables to 3000 ft. The ComNet SFP-CL can be used in any Ethernet device that uses MSA-compliant SFPs for connectivity. Two different models are being announced, a 10Mbps and 100MBPS model. These SFP modules can be connected to any ComNet CopperLine® device.

The ComNet SFP-CL is a great solution where existing COAX or UTP is being utilized for IP transmission and extended distance is needed. The CL-SFP simplifies installation



by eliminating the need for additional Ethernet over Copper media converters by allowing direct connection to an Ethernet switch. The ComNet SFP-CL is made in the USA.

**Request more information:**  
[www.securityinfowatch.com/11192986](http://www.securityinfowatch.com/11192986)

# comnet

Communication Networks

[www.comnet.net](http://www.comnet.net)

## iPac Series IP Camera from Bolide – The Ease of Plug and Play

The iPac is the only full line IP camera solution in the market that comes in multiple configurations such as megapixel, WDR and Effio-e chipset with numerous features and functions all in one camera. We are the first

company to offer license-free NVMS that will record and manage up to 255 cameras. With our "Auto Sniff" feature that automatically brings up each iPac on the network, camera set up is quick and easy. iPac cameras are now equipped with flash embedded video servers which allow users to use any flash installed internet browser to easily connect to iPac cameras. In addition, the new iOS app and Android app are available for remote configuration and monitoring.

The iPac camera line utilizes ONVIF which allows you to integrate Bolide iPac cameras into any existing project or mix'n match with dif-



ferent software. There are multiple time-saving features and functions available on each iPac camera, such as on-board BNC output, which can be used to adjust and focus the camera while mounted. By using the 2 way

audio functions with call boxes, vms stations or guard stations, you will be able to monitor job sites with voice and video.

The mechanical IR cut Filter pairs nicely with the CCD chipsets to offer the best nighttime image in the IP market. If your network goes down, the iPac series cameras feature onboard SD card slot to back up any important video data. iPac are equipped with POE so they can be powered with a single Ethernet cable. Each iPac chipset is available in box, armored/indoor dome, IR bullet and high speed PTZ models.

**Request more information:**  
[www.securityinfowatch.com/10716039](http://www.securityinfowatch.com/10716039)

# BOLIDE

TECHNOLOGY GROUP

[www.bolideco.com](http://www.bolideco.com)

## 3MP Roughneck Camera with WDR from Vicon

With more than 10 times the pixels of a standard definition camera, Vicon's 3MP V923D IP camera captures the highest level of detail while still delivering all the advantages that have made the Roughneck Dome Series so popular among Security Professionals.

Rugged, IP-66 and IK10 rated construction with an internal heater allows the dome to be used in the harshest environments, while the ONVIF-compliant interface provides compatibility with a wide range of VMS systems.

The V923D features Wide Dynamic Range that dramatically improves visibility in shadowed areas that are surrounded by bright back-lighting. In nighttime or dark conditions, optional IR illuminators allow the camera to capture usable video at distances up to 65 feet.

### Other features include:

- Motorized, varifocal autoiris lens with 3-9mm, 3X zoom can be focused from a web browser
- H.264 high-profile, MPEG-4 and M-JPEG compression



- PoE (IEEE 802.3af), 24 VAC or 12 VDC
- Dual/triple streaming video
- Two-way audio
- SD Card slot
- Rugged construction for harsh indoor or outdoor environments
- Heater
- IK10 rating
- Surface mounting on wall or ceiling; pendant and in-ceiling mounting options.

**Request more information:**  
[www.securityinfowatch.com/11237619](http://www.securityinfowatch.com/11237619)

# VICON

[www.vicon-security.com](http://www.vicon-security.com)



# DON'T LET SHRINKAGE STUNT YOUR GROWTH.

- **Cut Losses** by reviewing point-of-sale exceptions integrated with video surveillance
- **Boost Profits** by finding out about losses while they are happening
- **Improve Operations** in minutes with automated daily reports



Designed specifically for retail, our video surveillance solutions ensure you'll never come up short. To start boosting profits and cutting losses now, call 800-563-5564 x5448 or drop us an email at [sales@marchnetworks.com](mailto:sales@marchnetworks.com).

**SEE MORE** at [marchnetworks.com](http://marchnetworks.com)

Request information: [www.securityinfowatch.com/10214308](http://www.securityinfowatch.com/10214308)



An Infinova Company

## BN Series Network Video Recorder (NVR) from Bolide

The Bolide BN series NVR serves as a standalone network video recorder enabling you to view, monitor, and playback video remotely.

Supporting up to 16-channel H.264 high profile recording and decoding, our network video management software (NVMS) is included, allowing you to manage multiple NVR's at the same time. The "Auto Sniff" feature that automatically brings up each iPac camera on the network, makes camera set-up quick and easy. BN series NVR comes standard with 2 removable HDD slots for all your recording needs and expandable for large application. The user-friendly interface is simple to use and low learning time.

The BN series NVR also features schedule recording, alarm record-



ing, alarm recording scheduling, motion-detection recording, and pre/post-alarm recordings. High resolution display port VGA and HDMI are built-in the unit for your high definition display. With the embedded core video streaming (RTMP), the BN series NVR supports not only Microsoft Internet Explorer, but also Firefox, Safari, Opera and Google Chrome. BN series NVR allows you the flexibility to use any browser you choose to playback and monitor video at anytime. In addition, the new iOS app and Android app are available for remote configuration and monitoring.

**Request more information:**  
[www.securityinfowatch.com/10931410](http://www.securityinfowatch.com/10931410)



[www.bolideco.com](http://www.bolideco.com)

## March Networks' Searchlight for Retail

- **Increase profits by 10 percent or more**
- **Reduce LP investigation times per case by as much as 75%**
- **Audit stores in minutes with automated daily reports**



Get the most from the systems you already have in place with March Networks Searchlight™ for Retail. The intelligent video software applications seamlessly integrate surveillance video, security analytics and point-of-sale (POS) transaction data, allowing convenience stores, specialty retailers, quick service restaurants and other retail organizations to run lightning fast searches across all their locations.

### Reduce Losses from Shrink

Cut losses from fraud, theft and organized retail crime dramatically with Searchlight for Retail. The software integrates high-quality video evidence with your POS transac-

tion data. It gives loss prevention teams a sophisticated method of identifying and investigating crimes and improving recoveries. Combined with convenient and easy-to-use

drill-down capabilities and case management, the solution helps retailers stop theft sooner and build strong case evidence for more successful resolution and prosecution.

### Improve Operations and Compliance

Use Searchlight for Retail's customized reports to remotely audit store performance and identify areas where improvements are needed. Are all your stores opening on time? How clean and organized do they appear? Are marketing displays and signage consistent across your operations? With Searchlight, you'll know in minutes without leaving your office or spending hours conducting store-by-store video searches.

**Request more information:**  
[www.securityinfowatch.com/10918699](http://www.securityinfowatch.com/10918699)



An Infinova Company  
[www.marchnetworks.com](http://www.marchnetworks.com)

## Nitek's Etherstretch IP over Coax Product Line

**EtherStretch™**  
IP Cameras Over Coax



Nitek's continuously evolving Etherstretch product line consists of infrastructure products necessary to build an enterprise based IP video system utilizing existing coax cabling.

Specifying and selecting the appropriate IP over coax products necessary for your CCTV migration projects can be a daunting process. Nitek has simplified the product selection process by introducing a new "System Selection Configuration Calculator".

To access this intuitive tool from our website simply click on the support tab found on the Home page. The "System Selection Calculator" quickly builds a bill of materials and calculates the PoE wattage available for the connected edge devices.

Downloading spec sheets, manuals, CAD drawings and other associated documents are simply a click away and includes an integrated e-mail and print function.

**Request more information:**  
[www.securityinfowatch.com/11237664](http://www.securityinfowatch.com/11237664)



[www.nitek.net](http://www.nitek.net)

## Samsung's New Award-Winning HD PTZ Network Dome Camera

Samsung's newly introduced video surveillance IP PTZ network dome camera sets new benchmarks in performance, functionality and added value. The SNP-6200RH P/T/Z dome camera features 20x optical zoom, full HD image capture, and built-in IR LEDs for nighttime viewing at distances up to 100 meters (328 feet) along with a host of advanced built-in analytics for advanced system operation.

Ideal for challenging sites such as airports, bridges, parking garages, open space/perimeter locations, as well as retail and industrial areas, the new SNP-6200RH network PTZ dome camera is engineered to perform brilliantly in both a wide spectrum of applications and lighting conditions.



The camera's unique IR function illuminates objects by focusing the beam as the camera zooms, resulting in clear imaging in total darkness. Its noise filtering and Wide Dynamic Range (WDR) technology delivers a S/N ratio of 60dB for superior image quality and dual H.264/MJPEG compression algorithms ensure effective bandwidth utilization. The camera produces full HD1920 x 1080P resolution for exceptional HD images. The ONVIF compliant SNP-6200RH is also weatherproof to IP66 standards as well as IK10 vandal resistant and can withstand temperatures ranging from -50°C to +55°C.

**Request more information:**  
[www.securityinfowatch.com/11176740](http://www.securityinfowatch.com/11176740)



[www.samsungsecurity.com](http://www.samsungsecurity.com)

## Bullet-Style Network Camera with Integrated IR from Axis

Designed for monitoring entrances, exits and perimeters, the AXIS Q1765-LE Network Camera is a slim, bullet-style, outdoor-ready network camera with 18x optical zoom and auto-focus. It delivers SMPTE-compliant HDTV 1080p video in multiple, individually configurable H.264 and Motion JPEG video streams.

AXIS Q1765-LE can cover great distances providing wide overviews and detailed images for identification purposes. With four built-in infra-red (IR) LEDs, this bullet-style network camera casts enough infrared light in darkness to allow the camera to see at least 50 ft. away in the widest field-of-view and up to 130 ft. in full tele view. This intelligent, built-in IR illumination automatically adjusts its beam to match the camera's field-of-view, making it especially beneficial for installations requiring around-the-clock surveil-



lance without additional artificial lighting.

The compact AXIS Q1765-LE is lightweight yet tough. The camera is IP66/NEMA 4X-rated, making it resistant to water and dust. Arctic Temperature Control allows reliable start-up in temperatures ranging from -40°F to 122°F, making AXIS Q1765-LE perfect for installations in places with challenging weather. The camera is easy to install thanks to its light weight design, one-cable installation, support for Power over Ethernet and AC/DC power. In addition, Axis' unique Corridor Format also allows for effective monitoring of long, 9:16 vertical scenes, such as highways and city streets for traffic monitoring and fence lines for perimeter security.

**Request more information:**  
[www.securityinfowatch.com/11191614](http://www.securityinfowatch.com/11191614)

**AXIS**  
COMMUNICATIONS  
[www.axis.com](http://www.axis.com)

## Bolide's iCube All-in-One Wifi IP Camera

Bolide's iCube Wifi network camera is the latest addition to the iPac series and loaded with features including wireless connection, built-in SD card for recording, two-way audio communication, high power IR for night operation and innovative PIR for accurate motion detection. With a built-in advanced CPU and web server, iCube offers a complete day and night monitoring system for homes, offices and large-scale applications. Featuring simple installation and user friendly web-based interface, consumers can easily integrate the iCube into an existing network and view the streaming video from a PC, notebook, as well as access with their smart phone such as Apple or Android smart phone.

If quality is what you are looking for, iCube is your best choice. Unlike other VGA cameras, iCube comes equipped with an advanced image sensor that delivers not only crisp



clear images but also 720p high resolution for your surveillance needs.

iCube is also built with an advanced PIR Motion Alert System – Passive Infrared that can detect objects more accurately compared to traditional motion detection. With the Motion Alert System, iCube can easily capture the intruder by activating the attractive alert sound when motion is detected. With the help of IR, this camera is perfect for night operation and delivers clear high resolution images 24/7. With the built-in web server, iCube allows you access to the most common activities, such as viewing live video, playback your recordings, exporting videos and taking snapshots with a touch of single button. iCube is a small camera loaded with tons of features for all your surveillance needs.

**Request more information:**  
[www.securityinfowatch.com/10836423](http://www.securityinfowatch.com/10836423)

**BOLIDE**  
TECHNOLOGY GROUP  
[www.bolideco.com](http://www.bolideco.com)



## Pelco's SpectraDome HD 30X

Schneider Electric's Pelco Spectra High-definition (HD) 1080 30X dome positioning system features a clearer image with six times the resolution of standard-definition domes. Ideal for attended surveillance applications, it comes with a suite of built-in advanced analytics, including AutoTracker, which allows users track the subject through the full 360 degree rotation of the camera. Other analytics include abandoned object, adaptive motion, camera sabotage, directional motion, loitering detection, object counting, object removal and stopped vehicle. The unit delivers clear images with its 1/2.8-inch Exmor CMOS imager with an integrated 30X optical zoom lens. [www.pelco.com/spectra](http://www.pelco.com/spectra)

**Request more information:**  
[www.securityinfowatch.com/11128042](http://www.securityinfowatch.com/11128042)

**SL183 5MP Day/Night undistorted**

**Ultra wide 1.8 - 3.0mm**

**115° wide... ..to 80°**

**Theia**  
TECHNOLOGIES  
[www.TheiaTech.com](http://www.TheiaTech.com)

Using Linear Optical Technology®  
ALL OPTICAL DISTORTION CORRECTION

**Request information:** [www.securityinfowatch.com/10215759](http://www.securityinfowatch.com/10215759)

## Vicon Mobile for Tablets and Smart Phones

Vicon Mobile, our latest app for Apple and Android mobile devices, brings a new level of convenience and simplicity to ViconNet, whether you want to view live video from any camera on your network, pull up recorded video, or even control PTZ cameras.

### Use it just like other apps

Vicon Mobile has been designed for intuitive, ease of use. You will feel confident operating it right from the start, using the same tapping, dragging and pinch-to-zoom motions used by the most common mobile apps.

Dragging cameras from the on-screen device menu to individual tiles causes live or recorded video to quickly appear. Any tile can become a full screen view with a simple tap. A touch-sensitive on-screen jog wheel controls PTZ cameras.

Account privileges that have been established for the overall ViconNet system will automatically pertain to mobile users, allowing administrators to limit certain mobile users



from accessing specific cameras or recorded video.

And, because we know that mobile users love to run more than one app at a time, Vicon Mobile preserves its most recent state when minimized, allowing you to quickly switch back and forth between apps.

- Concurrent views of up to 9 cameras on tablets; 4 on smart-phones
- Compatible with the most popular Apple and Android devices
- Download it free from the App Store or Google Play.

**Request more information:**  
[www.securityinfowatch.com/10898742](http://www.securityinfowatch.com/10898742)



[www.vicon-security.com](http://www.vicon-security.com)

## Theia Ultra Wide, Undistorted 5mpx Varifocal Lens

Theia Technologies' family of ultra wide lenses uses patented technology to provide an ultra wide field of view while correcting barrel

rel distortion optically without software. The ultra wide field of view enables coverage of a wide area with fewer cameras.

Theia's family of unique, distortion-corrected megapixel lenses includes the SL183 providing:

- 115° to 77° HFOV with 1.8 - 3mm varifocal range
- No barrel distortion with Theia's patented Linear Optical Technology®
- Full 5 megapixel resolution
- IR correction for Day/Night cameras
- Compact - at 49.5mm fits in most mini-domes
- CS-mount for 1/3", 1/2.7" HD, 1/2.5", and 1/2" imagers
- Manual and DC auto-iris versions

**Request more information:**  
[www.securityinfowatch.com/10217675](http://www.securityinfowatch.com/10217675)



**Theia**  
TECHNOLOGIES

[www.theiatech.com/products.php?lens=SL183](http://www.theiatech.com/products.php?lens=SL183)

## March Networks MegaPX 360 Indoor Dome



Get complete scene capture in 5MP resolution with a single IP camera! The MegaPX 360 Indoor Dome delivers 360° and 180° panoramic overviews of an entire location, eliminating blindspots and reducing the number of cameras you need to install and maintain. Ideal for retail banking branches, convenience stores and other similarly-sized locations, this economical fixed dome

also features a digital PTZ that makes it easy to zoom-in and capture multiple views at the same time. The full field of view is recorded, so you can go back at any time to look at different areas.

- 5MP image
- 360° and 180° panoramic views with digital PTZ
- Bi-directional audio, alarms and switches
- Progressive scan CMOS sensor
- Simultaneous H.264 and M-JPEG compression streams
- Shadow Archiving with microSDHC or NAS
- Active video tampering
- Easy to install; surface mount
- Power over Ethernet (PoE)

**Request more information:**  
[www.securityinfowatch.com/11238006](http://www.securityinfowatch.com/11238006)



An Infinova Company

[www.marchnetworks.com](http://www.marchnetworks.com)

## ComNet Introduces Wireless Perimeter Transmission Solution

**New NetWave® Dual Radio Model Supports Wireless Redundant Ring and Drop and Insert Wireless Network Topology**

ComNet, Communication Networks of Danbury, Connecticut has introduced the NetWave® NW8 wireless Ethernet link that is designed to support redundant ring and "Drop-and-Insert" functionality on a wireless network.

The NW8 is a dual radio version of the recently introduced NW series of environmentally hardened wireless Ethernet products. ComNet positions this product as a solution for large-scale perimeter protection for facilities such as airports, border patrol and other large facilities where a wired infrastructure is cost-prohibitive.

The NW8 models feature dual gigabit Ethernet ports that support up to two IP connections and allow for

multiple IP cameras to be aggregated onto the wireless network.

The NW8 also supports optional IEEE802.3at PSE (Power Sourcing Equipment) for powering PoE connected devices, such as IP PoE cameras and simplifying installation.

**Request more information:**  
[www.securityinfowatch.com/11237696](http://www.securityinfowatch.com/11237696)



**comnet**  
Communication Networks

[www.comnet.net](http://www.comnet.net)

## 9000D series DVR with DDNS solution from Bolide

The 9000D series DVR from Bolide is the most impressive, cost-effective and well-equipped DVR on the market today.

We are proud to say we have the fastest data transmission rate for remote viewing on the market. Our H.264 compression methods allow the 9000D to store massive amounts of real time D1 video data via the onboard surveillance HDD.

Does your customer have an HDTV? Don't worry. The 9000D offers an HDMI output as well as a VGA and 2 BNC outputs. How about remote viewing? Our 9000D built in a cross platform server allows you access with MAC and PC as well as iOS, Android or BlackBerry smartphone.

We also offer free with each DVR purchase an advanced version of our Central Management Software. Link multiple DVRs, configure the EMAP function, playback up to 16



cameras at one time, and set privileges for each user.

The 9000D series DVR is loaded with free DDNS service. Simply sign up with your email address, then you can easily manage all your or your customers' DVRs without worry of changing the IP address. Bolide's DDNS service ensures your DVR can be reached anytime anywhere with internet access.

This is the most simplistic, user-friendly DVR available with loaded up-to-date features! You will be impressed with the complete value of this DVR series, try one out today!

**Request more information:**  
[www.securityinfowatch.com/10715966](http://www.securityinfowatch.com/10715966)



[www.bolideco.com](http://www.bolideco.com)

## Samsung Introduces 2 MP Full HD Network Mobile Flat Dome Camera Ideal for Transportation Applications

Samsung Techwin's newest addition to the WiseNetIII camera line is the 2 MP Full HD (1080P) network line of vandal-resistant cameras.

Fully mobile and has been designed to meet the challenging conditions for surveillance on-board trains, buses and other modes of public transport.

The Samsung SNV-6012M mobile flat camera is IP66 rated and equipped with a rugged M12 connector to withstand vibration and harsh weather environments.

Utilizing bandwidth-friendly H.264 compression along with the option to use MJPEG compression, the SNV-6012M can capture high quality color images with a lighting level as low as 0.03 lux, with an ultra-fast frame rate of 60fps at 1080p for latency free clear images.

Together with Samsung's Motion Artefact Reduction technology, this keeps image edges sharp and clear, even when subjects are moving. A defog feature improves the clarity of images in poor environmental conditions such as rain, smoke or fog, while Digital Image Stabilization (DIS) negates the effects of vibration. This also greatly reduces rolling shutter effects such as image wobbling or skew that can be seen in high quality images.

The enhanced Wide Dynamic Range built into the Samsung SNV-6012M's WiseNetIII DSP chipset, with performance greater than 120dB, accurately produces images in scenes with very bright and very dark areas.

**Request more information:**  
[www.securityinfowatch.com/11176738](http://www.securityinfowatch.com/11176738)



[www.samsungsecurity.com](http://www.samsungsecurity.com)



## Sony's SRG Line of HD Remote Cameras

Sony has unveiled its SRG line of high-definition, remotely-operated cameras, designed to deliver high-quality imaging, powerful capabilities, ease of use and affordability for a range of commercial applications. The first two models in the new line are the pan-tilt-zoom (PTZ) SRG-120DH and SRG-300H cameras. The SRG-120DH camera is designed for desktop use, while the SRG-300H model is desktop- or ceiling-mountable. They are capable of full HD (1080/60P) imaging, incorporate industry-standard HDMI interfaces, and can be controlled via VISCA protocol over IP connections. The SRG-300H also features a 30x optical zoom.

<http://pro.sony.com>

**Request more information:**  
[www.securityinfowatch.com/11200625](http://www.securityinfowatch.com/11200625)



## Find Your Balance

CyberLock provides the balance between security and convenience. Each electronic cylinder is packed with high security features to track and control access throughout your operation. CyberLock cylinders are the exact dimensions of the mechanical lock cylinders they replace and install without power or wiring into existing lock hardware, making installation quick, easy, and affordable.

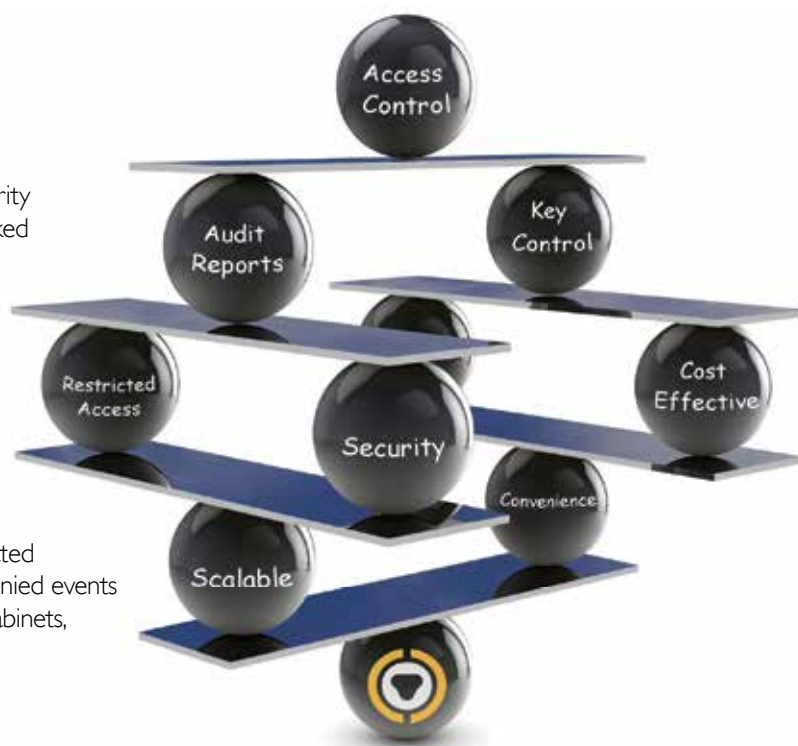
- No wiring or re-keying costs
- Keys cannot be duplicated and can be deactivated
- Track and report access granted and access denied events
- Adaptable to doors, cabinets, padlocks, traffic cabinets, and more

**Learn more today!**

Visit our website [www.cyberlock.com/lock2](http://www.cyberlock.com/lock2)

CyberLock, Inc. • 541-738-5500 • [sales@cyberlock.com](mailto:sales@cyberlock.com)

**Request information:** [www.securityinfowatch.com/10215538](http://www.securityinfowatch.com/10215538)



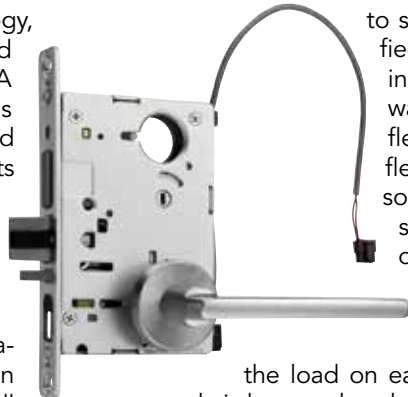
# ACCESS CONTROL & DOOR HARDWARE

## Ecoflex™ Electrified Mortise Locks from SARGENT and Corbin Russwin

Ecoflex™ technology, available in electrified mortise locks from ASSA ABLOY Group brands Corbin Russwin and SARGENT, represents a significant innovation in door opening technology. The Ecoflex electrified mortise lock is ideal for access control applications, whether used in conjunction with a wall reader, in an integrated hardwired lock, or in an integrated battery powered lock.

Ecoflex offers a flexible, reliable solution with a single ANSI/BHMA Grade 1 mortise lock that can serve a variety of uses. One lock body can be used for 12V - 24V applications and can be easily field-configured for fail-safe or fail-secure operation.

The locks offer a 97 percent reduction in energy usage compared



to standard electrified locks. Drawing less than 1/4 watt at 12V, Ecoflex offers more flexibility to consolidate power supplies and reduce operating costs. With the lower power draw,

the load on each power supply is lessened, reducing costs, simplifying deployment and improving system reliability.

Ecoflex's innovative actuator design further improves system reliability by eliminating the risk of voltage drops and inductive kickback, enabling longer cable runs and eliminating the need to add kickback diodes to an installation, for reduced cost and complexity.

**Request more information:**  
[www.securityinfowatch.com/11237789](http://www.securityinfowatch.com/11237789)

**SARGENT**

**ASSA ABLOY**

[www.intelligentopenings.com/ecoflex](http://www.intelligentopenings.com/ecoflex)

**Corbin Russwin**

**ASSA ABLOY**

## Standalone Locks from TellCard Systems

This highly affordable and durable standalone lock can solve even the most challenging applications. Great for retrofits. The cylindrical lock version fits into a standard 161 door prep. Mortise lock versions will fit into most standard mortise lock preps.

Built around PDQ Manufacturing's world class Grade 1 cylindrical lock and Grade 1 mortise lock bodies, it's ideal for professional offices, pharmacies, schools, health care facilities, retail and hospitality applications. Includes built-in capability for connecting to an external console or input device for remote access control management.



ment of individual users, user groups, schedules and lock settings.

### Features

- Up to 100 Users + 1 Master Code
- Audit trail captures 3,000 records (Accessible with USB version only).
- Tamper resistant keypad feature backlit buttons
- Battery Life: 130,000 cycles on a set of (4) AA alkaline batteries
- Low battery warning
- Suitable for outdoor applications.
- Rated Operating Temperature: 0° F to 130° F
- Mechanical key override

### Programming

Designed for simple and easy programming, the BASIC model does not require any external programming devices. All programming is performed using the keypad on the lock.

USB version uses a hand held device (tablet PC sold separately) for accessing audit trail data, manage-

### Model Numbering

EGT = Cylindrical Lock Series  
EMR = Mortise Lock Series

Call us for pricing and more information! 855-200-2611.

**Request more information:**  
[www.securityinfowatch.com/11237823](http://www.securityinfowatch.com/11237823)



[www.tellcardsys.com](http://www.tellcardsys.com)

## Loc-Down™ by MARKS USA: Life Safety Classroom Intruder ANSI/BHMA F110 Function Leverset

To answer the challenge of security and life safety in today's classroom environment, Marks USA Custom Lockset Division has developed the Loc-Down™ Classroom Intruder ANSI/BHMA F110 Function Leverset with Clutch Design (Marks USA Function DB). Marks USA has incorporated all of the standard features of their Survivor Series Locksets (clutch system, super strength retractor, long-life lever support springs and a life test of over 3 million Cycles) with their new Life Safety Classroom Intruder Function.

At the first sign of trouble outside, lock down a classroom instantly with Marks USA's Loc-Down™ Intruder Locksets. Typical Classroom function cylindrical locksets are designed to



be locked or unlocked from the exterior with the interior always in an open position, but allows in emergency life safety situations the teacher to secure the classroom without stepping into the hallway to lock the outside handle. Faculty & students remain safely within the classroom. There is no need to open the door, the exterior lever is disabled by operating the interior lock cylinder.

**Request more information:**  
[www.securityinfowatch.com/10889196](http://www.securityinfowatch.com/10889196)

**MARKS USA**

[www.marksusa.com](http://www.marksusa.com)

## 4850 – The One Box Solution for Rim Panic Exit Devices from Trine



The 4850-PoE requires .260 Amps at 12DC (3.12 Watts), which meets the requirements for .300 mA systems or provides additional flexibility for .500 Amps and higher systems. The low current draw allows the use of smaller and less expensive power supplies when installing any access control system. The 4850-LCD uses just .135 Amps at 24DC (3.24 Watts).

The 4850, along with the PoE and LCD version, provide the most versatile range of power options among surface mount electric strikes. Our standard 4850 comes with 11-28 DC volts with surge and kickback protection when amperage isn't a concern. All 4850 models provide four strike thicknesses (1/2", 5/8", 3/4", and 7/8") by supplying two spacer plates. The patented 6-pin anchoring system provides the highest level of strength and stability for any surface mounted strike — making this THE strike for rim panic devices.

Trine Access Technology designed the 4850-PoE and 4850-LCD to be the low current draw solution for rim panic exit devices, automatic door installations and access control systems.

These 4850 solutions eliminate the need for an additional power supply for the strike or to reduce its size for every day installations, increasing your profit margin.

**Request more information:**  
[www.securityinfowatch.com/10715662](http://www.securityinfowatch.com/10715662)

**TRINE**  
ACCESS TECHNOLOGY

[www.trineonline.com/4850.php](http://www.trineonline.com/4850.php)



## Delayed Egress with Latch Retraction

Detex's Delayed Egress with Latch Retraction (EExER) is designed for applications where both delayed egress and remote unlocking, remote dogging, access control or an automatic door operator is desired. An optional EX Request to Exit Switch may be added for push pad monitoring or LX Switch for latch bolt monitoring. The 100 dB alarm, will sound when someone attempts to exit but the door will remain locked for 15 seconds, deterring unauthorized exits and providing time to respond to the alarm. Ideal for restricted areas, access controlled doors, and any door requiring authorized entry or exit, while preventing unauthorized entry or exit. Perfect for fire-rated, cross corridor, access controlled, delayed egress doors with automatic operators, all without using magnetic locks or electric strikes. [www.detex.com](http://www.detex.com)

**Request more information:**  
[www.securityinfowatch.com/10524436](http://www.securityinfowatch.com/10524436)



## Geared Continuous Hinges from Select

Fix sagging electrically equipped doors for good and deliver total door service with SELECT Hinges' rugged SL57 full surface geared continuous hinge — perfect for retrofit. The SL57 uses our patent-pending process to protect and conceal the wiring and is backed by 25,000,000 independent test cycles, about 60 years of continuous, high-traffic use. That's why we can offer the industry's only Continuous Warranty™, a warranty that never expires. Concealed through-wires have a five-year warranty. Pair-Matched™ hinge leaves, lifetime lubrication and anodizing after machining work together to eliminate hinge repairs forever. SELECT hinges are ideal for high-traffic doors in retail storefronts, schools, convention centers, sports facilities, airports and other public buildings. Call 800-423-1174 or visit [www.select-hinges.com](http://www.select-hinges.com).

**Request more information:**  
[www.securityinfowatch.com/10271917](http://www.securityinfowatch.com/10271917)

## SARGENT IN100 Lock with Aperio™ Wireless Technology

With SARGENT IN100 locks, the security you need is finally in reach. Featuring Aperio™ wireless lock technology, IN100 locks make access control easy and affordable. Aperio utilizes wireless communication between the lock and a communications hub to connect to an online electronic access control system, significantly reducing the cost and inconvenience of traditional access control. Aperio is a global wireless platform from ASSA ABLOY that allows you to expand your access control footprint — quickly, easily, and affordably — using existing platforms you trust. Available across a range of locking hardware from ASSA ABLOY Group brands, Aperio provides the flexibility to address a variety of applications throughout your facility. [www.intelligentopenings.com/aperio](http://www.intelligentopenings.com/aperio)

**Request more information:** [www.securityinfowatch.com/10715589](http://www.securityinfowatch.com/10715589)



## Samsung Technology At Its Core

60 fps @1080p  
& Real-time WDR

Low Light  
Performance  
@ 0.1LUX  
(50IRE & F1.2)

120dB  
WDR

One-Touch  
Remote  
Simple Focus

Intelligent  
Video  
Analytics

Efficient  
Network  
Streaming

Defog Video  
Enhancement



### WiseNetIII

### The Wise Choice For Professionals

Samsung Techwin's new WiseNetIII chipset technology powers its new generation of IP cameras.

#### WiseNetIII cameras

- 2 Megapixel / 1080p resolution
- Low light performance, 100dB WDR, 60fps @ 1080p



SNB-6004



SND-6004



SNO-6004R



SND-6004R



SNV-6004R

877-213-1222  
[www.samsung-security.com](http://www.samsung-security.com)

**SAMSUNG TECHWIN**

**SAMSUNG**

**Request information:** [www.securityinfowatch.com/10215711](http://www.securityinfowatch.com/10215711)

# ACCESS CONTROL & DOOR HARDWARE

## Corbin Russwin Access 700® IP-Enabled Campus Access Control Locks

Corbin Russwin Access 700® IP-enabled campus access control locks offer an ideal solution for forward-thinking campuses. Now featuring HID® multiCLASS SE™ technology, the Access 700 PoE and WiFi locks offer multi-layered security and simultaneous support for multiple industry-leading credentials. Ideal for mixed credential environments, these locks allow an easy transition from magnetic stripe to higher security technologies and are Seos™-enabled for use with NFC-enabled mobile smart phones.

Using the facility's Ethernet network, the Access 700 PIP1 Power over Ethernet (PoE) provides full online access control with standard network cabling and minimizes energy consumption. Ideal for adding access control to areas of a building that would be too dif-



ficult or costly to wire, the Access 700 PW11 WiFi lock uses 802.11b/g/n infrastructure to significantly reduce hardware and labor costs.

Combined with ASSA ABLOY's PERSONA Campus™ software or with approved third party software, Access 700 locks integrate seamlessly into transactional and housing systems, providing comprehensive, reliable access control for the campus environment. They integrate all standard access control components into a single device – ANSI/BHMA Grade 1 lock or exit device, controller, card reader, door position switch and Request-to-Exit sensor – and are available in mortise lock, cylindrical lock, or exit device configurations..

**Request more information:**  
[www.securityinfowatch.com/10217718](http://www.securityinfowatch.com/10217718)

**Corbin Russwin**

**ASSA ABLOY**

<http://info.intelligentopenings.com/campus>

## Trine's 4100 Electric Strike

Trine Access Technology introduces the latest addition to our one box solution family. For use with cylindrical and mortise locksets, the 4100 offers the four most popular faceplate configurations right in the box. These Faceplates cover more than 90 percent of installations without deadbolts.

The electric strike accepts 12/24 DC and 12-24 AC, without the need for an external power regulator. A premium stainless steel trim skirt is included to clean up the cut line and is finished to match the electric strike, because aesthetics matter.

While Trine Access Technology's 4100 faceplates make it very flexible it's also very adaptable. A 1-3/8" shallow backset allows it to be used in 2" fire rated frames with 1/2" sheetrock ingress, as well as tight spots in general. Grade 1 is met by its 3,250 lbs. holding force and 1,000,000+ life cycles which allow it to be used in the most demanding environments.

Rounding out its adaptable feature set is its low current draw of .240 Amps at 12DC which is perfect for PoE installations. The current draw of



.114 Amps at 24DC allow for smaller power supplies in all installations. The one box solution covers the little things like additional Torx® security screws and latch shims for door play.

The 4100 one box solution makes installing and specifying difficulties a thing of the past while reducing inventory at the same time. The new strike solution is available at many security and locksmith distributors across the United States and Canada.

**Request more information:**  
[www.securityinfowatch.com/10831678](http://www.securityinfowatch.com/10831678)

**TRINE**  
ACCESS TECHNOLOGY

[www.trineonline.com](http://www.trineonline.com)

## IN120 WiFi Locks from SARGENT and Corbin Russwin



The IN120 WiFi lock, available from ASSA ABLOY Group brands Corbin Russwin and SARGENT, offers the ease and flexibility of WiFi in a new streamlined design, setting a new standard for aesthetics and performance.

The IN120 enables more cost-effective installations, allowing facilities to expand access control coverage to more doors. Ideal for use in hard-to-wire locations, the IN120 utilizes standard IEEE 802.11b/g/n Wi-Fi connectivity to connect to the access control system, significantly reducing installation costs, and eliminating the need for proprietary equipment. It features integrated ANSI/BHMA Grade 1 hardware,

available in cylindrical and mortise lock configurations, with your choice of black or white reader and a broad range of finishes and levers.

The IN120 uses HID® multiCLASS SE™ technology, which provides heightened security, supports multiple credential types, and enables NFC mobile access. The IN120 supports current Wi-Fi security standards including WEP, WPA, WPA2 and 802.1x and uses AES 128-bit encryption. In addition, the WiFi radio is field-upgradeable, making it future proof for evolving Wi-Fi standards.

The ASSA ABLOY IN120 offers a customizable feature set, allowing customers to select only the features they need or add features as their requirements grow. The IN120 also offers local lockdown and privacy mode capabilities on both cylindrical and mortise lock configurations. Adding to its versatility, the IN120 works with a broad range of industry-leading access control systems.

**Request more information:**  
[www.securityinfowatch.com/11118333](http://www.securityinfowatch.com/11118333)

**SARGENT**

**ASSA ABLOY**

[www.intelligentopenings.com/IN120](http://www.intelligentopenings.com/IN120)

**Corbin Russwin**

**ASSA ABLOY**

## Regulator from CompX

CompX Security Products announces the release of Regulator, a keyless, electronic push button cabinet lock for new or retrofit applications. The Regulator is available in two versions: self-locking and manual locking.

The self-locking version features SlamCAM, a spring loaded latching mechanism, which allows the user to close the cabinet door or drawer – no need to return the knob to the locked position.

To operate the self-locking Regulator, users enter a valid code on the membrane keypad and press enter. The correct code allows the knob and SlamCAM to be rotated simultaneously 90 degrees into an open position. Since



the knob is spring-loaded, simply releasing the knob returns the SlamCAM back into latching position. The SlamCAM, which is also spring-loaded, operates very similar to standard entry door hardware – users just need to push the cabinet door or drawer closed.

The Regulator comes with (2) AAA batteries, which provide for 50,000 openings, a low battery indicator, and convenient external battery compartment for easy removal and installation of batteries. The Regulator's easy to clean membrane keypad is extremely durable and provides a smooth, crevice free surface.

**Request more information:**  
[www.securityinfowatch.com/10959364](http://www.securityinfowatch.com/10959364)

**CompX**  
SECURITY PRODUCTS  
[www.compregulator.com](http://www.compregulator.com)



## XGT Series Cylindrical Locks from PDQ

Looking for the Best Grade 1 Cylindrical Lock Value? Try PDQ Manufacturing's XGT Series Grade 1 Cylindrical Lock — simply the most rugged and durable on the market. Assembled in the USA at PDQ's Leola, Pa.-based manufacturing facility, it's fully compliant with Buy American Act requirements, and is backed by a lifetime limited warranty. Let's talk testing — lever torque tested by an internationally accredited, independent testing lab to exceed 3000 in-lbs. of torque resistance, four times the ANSI/BHMA Grade 1 standard. It is so strong that no clutch is required; and to 4 million duty cycles (also 4 times the ANSI/BHMA Grade 1 standard). Designed to fit into a standard 161 door prep, it's the perfect solution for retrofit upgrades. Call us for pricing and more information at 800.441.9692.

[www.pdqlocks.com](http://www.pdqlocks.com)

**Request more information:**

[www.securityinfowatch.com/11239575](http://www.securityinfowatch.com/11239575)



## Access Solutions from Marks USA

Marks USA was established in 1977 as a mortise lock manufacturing company that would meet the needs of an expanding market. Since then, the company has grown and expanded its' product line to include residential, institutional and commercial locksets to meet and exceed the most stringent UL and ANSI specifications. Marks USA has the capabilities to produce both standard and custom items. The company employs talented personnel who possess the ability to think "outside the box." This kind of thinking has given Marks USA its niche in the contract hardware industry. Marks USA's product lines include architectural grade, BHMA & UL code compliant mortise, cylindrical & tubular locksets, electronic access control, biometrics, hospital/life safety & anti-ligature locksets, ornamental iron locksets, HI-SECURITY™ Cylinders, panic devices and door closers.

[www.marksusa.com](http://www.marksusa.com)

**Request more information:**

[www.securityinfowatch.com/10217302](http://www.securityinfowatch.com/10217302)

## School Security Solutions from SARGENT and Corbin Russwin

Available from ASSA ABLOY Group brands Corbin Russwin and SARGENT, stand-alone access control locks offer unique functionality that is ideal for classroom applications. Providing easy everyday access to the classroom using a PIN code or prox card, the Access 800® AC2 and Profile Series v.G1.5 also provide the ability to lock the door quickly with an RF fob from almost anywhere inside the room. Simple and effective, the Sargent and Corbin Russwin stand-alone locks with RF panic button functionality combine innovative technology with practical application. This solution enables easy everyday access to classrooms, and provides extra assurance in the event of an emergency. [www.assaabloydss.com/schoolsecurity](http://www.assaabloydss.com/schoolsecurity)

**Request more information:** [www.securityinfowatch.com/10715568](http://www.securityinfowatch.com/10715568)



# Access Control Solutions

## Many Options From the Company of Choice for More than 65 Years

From single family residential to full size commercial and maximum security — swing and slide gate operators, doors, parking and access control — get it all from the manufacturer that's been at it for more than 65 years.

One company offers complete access control solution, from planning assistance, to manufacturing, service, and support — since 1948, one company — DoorKing.

Contact us today and let us show you how DKS can simplify your life.

For more information:  
**doorking.com**



Parking Control Access Control Telephone Entry Gate Operator  
Member: AFA, DASMA, NNA, IDA, NOMMA, NPA, SIA, SSA

made in usa [doorking.com](http://doorking.com)

[facebook.com/doorking](https://facebook.com/doorking)

[twitter.com/dksdoorking](https://twitter.com/dksdoorking)

[youtube.com/dksdoorking](https://youtube.com/dksdoorking)

[linkedin.com/company/doorking-inc-](https://linkedin.com/company/doorking-inc-)

**Request information:** [www.securityinfowatch.com/10213482](http://www.securityinfowatch.com/10213482)

# ACCESS CONTROL & DOOR HARDWARE

## Corbin Russwin ML2000 Series Mortise Lock

The ML2000 Series mortise lock from Corbin Russwin is designed to meet the rigors of high-traffic commercial, institutional, industrial and government applications. The lockbody is constructed of heavy-gauge steel, our patented Quick Reversible latchbolt, and a 1" stainless steel deadbolt. It has been tested to easily surpass all BHMA standards, providing all the strength and security required in a Grade 1 mortise lock. Furthermore, a wide variety of trim designs and functions and a 10-year warranty, lend to the ML2000's versatility and reliability.

Utilizing the proven ML2000 Series mortise lockset, you can also combine simplicity with access control and use the electrically controlled



mortise lock. The ML20900 Series provides self-contained, integral continuous-duty, solenoid-operated remote locking and unlocking.

Also available as high security or vandal resistance versions, The ML2000 Series features vandal resistant stainless steel escutcheons with tapered edges and Torx® pin tamper resistant screws.

Match it with any of Corbin Russwin patented high-security cylinders, and any door can become a formidable barrier to intruders.

The ML2000 Series is the ideal choice for use in offices, schools, hospitals, hotels and other high-use applications.

**Request more information:**  
[www.securityinfowatch.com/11237921](http://www.securityinfowatch.com/11237921)

**Corbin Russwin**

**ASSA ABLOY**

[www.corbinrusswin.com](http://www.corbinrusswin.com)

## SARGENT 8200 Series Mortise Lock with BHW Trim

Designed for mortise locks, the BHW trim integrates the lever and escutcheon, creating a superior design that is safe, easy to use and aesthetically pleasing. Its streamlined look and feel brings an elegant style to the most demanding environments and fits perfectly in modern behavioral health areas or school environments.

Traditional lever and knob locks are often targets for vandals in educational environments, especially in low traffic areas. SARGENT's innovative ANSI/BHMA Grade 1 BHW trim features an integrated lever and escutcheon in a unique design that is difficult to damage. The lock's low profile eliminates catch points, typical on traditional lever trim.

Healthcare facilities are transforming the patient experience, combining safety and reliability with aesthetics. Accepted by NYS Office of Mental Health for use in high risk areas, the BHW trim minimizes risk and contributes to patient safety.



Available in 37 functions including electrified, the BHW trim is ADA-compliant and can be used in many school applications including locker rooms, storage rooms and back entryways or in behavioral health specific environments that need even more versatility.

**Request more information:**  
[www.securityinfowatch.com/11237940](http://www.securityinfowatch.com/11237940)

**SARGENT**

**ASSA ABLOY**

[www.sargentlock.com](http://www.sargentlock.com)

## SARGENT Passport 1000 IP-Enabled Campus Access Control Locks

SARGENT Passport 1000 P1 and P2 Power over Ethernet (PoE) and WiFi locks leverage existing network infrastructure to provide advanced security and easier, more cost-effective installations. Designed specifically for the campus environment, the IP-enabled access control locks feature HID® multiCLASS SE™ technology for a future-proof solution. With simultaneous support for multiple credentials, they offer an easy migration path to higher security credentials and NFC mobile access.

Recognized for its contribution to sustainable buildings, the Passport P1 re-uses existing IEEE 802.3af PoE infrastructure, streamlines the installation process, reduces costs and components, and minimizes power consumption. The Passport 1000 P2 uses



IEEE 802.11b/g/n WiFi technology, completely eliminating any wiring, significantly reducing installation time and enabling access control in more locations.

Combined with ASSA ABLOY's PERSONA Campus™ software or with approved third-party software, Passport 1000 locks integrate seam-

lessly into transactional and housing systems, providing comprehensive, reliable access control for the campus environment. They integrate all standard access control components into a single device — ANSI/BHMA Grade 1 lock or exit device, controller, card reader, door position switch and Request-to-Exit sensor — and are available in mortise lock, cylindrical lock, or exit device configurations.

**Request more information:**  
[www.securityinfowatch.com/10216599](http://www.securityinfowatch.com/10216599)

**SARGENT**

**ASSA ABLOY**

[www.intelligentopenings.com/campus](http://www.intelligentopenings.com/campus)

## Access 3 Key System from Corbin Russwin

The Access 3 key system from Corbin Russwin provides multiple levels of utility-patented protection to offer the right level of custom security for each opening in your facility. Three levels of ANSI/BHMA Grade 1 protection secures every opening, from patented keyway to UL437 certified.

Access 3 AP is the first level of protection. It features a utility-patented keyway and provides protection against bumping for mortise, rim and component cylinders.

Access 3 AS combines a utility-patented keyway and patented side bar locking with unique angled bottom pins that provide end users with geographical exclusivity. Cylinders provide protection against bumping and picking.

Access 3 AHS is the highest level of security. It combines a utility-patented keyway and side bar locking with unique angled bottom pins that provide end users with geographical exclusivity. Cylinders are constructed to provide protection



against bumping, picking, drilling and physical attack, and are certified to UL437.

A common key for all three levels of security enhances key control and simplifies administrative procedures. Key blanks are controlled through authorized distribution, and unauthorized key duplication is patented protected through 2027. Bump resistance is standard for all three Access 3 levels, and geographical protection is available. Available for mortise, rim, component and Large Format Interchangeable Core (LFIC) cylinders.

**Request more information:**  
[www.securityinfowatch.com/11237948](http://www.securityinfowatch.com/11237948)

**Corbin Russwin**

**ASSA ABLOY**

[www.corbinrusswin.com](http://www.corbinrusswin.com)



## Vandal Resistant Lever Lock from Corbin Russwin

Corbin Russwin's CL3100 Series is the ideal solution for the toughest environments within education and health-care facilities. With unique T-Zone lock construction tested to over 15 million cycles, and more than 3,000 inch lbs. or torque, the CL3100 Series provide strength and reliability that easily exceeds ANSI/BHMA Grade 1 requirements for torque and cycle testing and will outperform all competitor locks with its impressive reliability and durability. The design also simplifies facility maintenance by utilizing a single lock body for all functions. Flexible, strong, and durable — this lock can take whatever you give it.

[www.corbinrusswin.com](http://www.corbinrusswin.com)

**Request more information:**  
[www.securityinfowatch.com/10836842](http://www.securityinfowatch.com/10836842)



## SARGENT 80 Series Exit Device with Electric Latch Retraction

Take charge of your exits. The Electric Latch Retraction exit device from SARGENT provides remote-controlled latch retraction for high traffic egress doors, and delivers quiet, smooth operation. Easily installed in new or retrofit applications, the 56-ELR features maintenance-free design with few moving parts. Plus, each device draws less than one amp of power, simplifying installation and increasing system design flexibility. Available with all SARGENT 80 Series exit devices, the electric latch retraction is ideal for offices, convention halls, schools, theaters and libraries and any environment sensitive to noise that demands consistent performance.

[www.sargentlock.com](http://www.sargentlock.com)

**Request more information:**  
[www.securityinfowatch.com/11238742](http://www.securityinfowatch.com/11238742)

## CyberLock Electronic Access Control System

The CyberLock system of electronic locks and programmable keys offers a cost-effective turnkey solution for any entity seeking to increase security, accountability and key control. Without the need for power or wiring, installation of the electronic cylinders is quick and easy. CyberKey smart keys are programmed for each user, detailing what locks it can open and when, reducing unauthorized access. Keys cannot be duplicated and can be deactivated if lost or stolen, eliminating the need to re-key. Both the lock and key record access activity, including access denied events. The information stored in the lock and key can be downloaded and viewed in a report format or automatically dispersed by email notification in the event of a specific activity or type of event. [www.cyberlock.com/lock2](http://www.cyberlock.com/lock2)

**Request more information:** [www.securityinfowatch.com/10218089](http://www.securityinfowatch.com/10218089)



Remote locations



Hospitality



After-hours deliveries



Worksites



Hospitals / healthcare



Office building/university

## Kidde: The New Destination for Mechanical KeySafe™ Solutions

Leveraging its 90+ years of product design and mechanical engineering expertise, Kidde now offers top quality key-control and entry-management products.

Choose Kidde keyed or coded keyboxes for no-fuss access to customer sites, remote facilities, and office buildings. Save your customers time by preventing lockouts, lost keys, rekeying locks and cumbersome key audits. And, look for new ways to expand your business via Kidde's wide variety of safety and security products.



Learn more! Visit [Kidde.com](http://Kidde.com)  
or [keysafe.com](http://keysafe.com)



**Request information:** [www.securityinfowatch.com/10547737](http://www.securityinfowatch.com/10547737)

# ACCESS CONTROL & DOOR HARDWARE

## SARGENT 11 Line Bored Lock



quirements for torque (2 times the standard) and cycle testing (18 times the standard).

With 18 functions available, the 11 Line integrates into most existing facility's key systems and retrofits any standard cylindrical lock door prep. The 11 Line contributes to sustainability efforts with less lock replacements due to the long life and high post-consumer recycled

The Patented 11 Line lock sets a higher standard for Grade 1 bored locks. Its unique, T-Zone construction provides unequalled strength, durability and security by interlocking the lockbody and latch.

Ideal for the most demanding environments within schools and hospitals to keep occupants and property safe and secure, the 11 Line easily exceeds ANSI/BHMA Grade 1 re-

content (68%).

The design also simplifies facility maintenance and lowers the cost of ownership by utilizing a single lock body for all functions, requiring fewer inventoried parts.

Flexible, durable, reliable — this lock can take whatever you give it.

**Request more information:**  
[www.securityinfowatch.com/10836489](http://www.securityinfowatch.com/10836489)

## SARGENT

## ASSA ABLOY

[www.sargentlock.com](http://www.sargentlock.com)

## Alarm Lock's Trilogy Series with School Access Control Vulnerability Index

Alarm Lock, the leading, largest line of electronic PIN/Prox access locks, Trilogy® and network-controlled wireless Trilogy Networx™, for all door types, locks & keypads. Ideal when budgets, time or hardwired-system

capacity runs short, use same HID Prox ID cards, yet deploy in an hour, downtime-free, a door at a time, at less than 1/3rd the cost.

Alarm Lock's Trilogy® Access Locks are ideal in case of emergencies, as these advanced wireless locks, can provide schools, hospitals, and business campuses immediate lockdown by pressing a button on a pocket-sized remote keyfob.

Alarm Lock's DL3200 standalone Trilogy Lock provides keyfob-activated classroom lock-down, from safely inside the classroom, with a typical range of up to 100'. For a



global lockdown solution that also eliminates door-to-door operations, Trilogy Networx™ can be locked down or unlocked campus-wide in under 10-seconds, from a keyfob, wireless panic button or

from the school server.

SAVI™, the Security Access-Control Vulnerability Index™ was created for security professionals to use as an objective, brand-agnostic audit tool to evaluate any school's access control vulnerability. On an easy electronic form, you simply enter the kinds of security they have in place, to both get their score, plus next-steps for improved security you can provide. To become a certified SAVI professional. Call 1-800-ALA-LOCK for training today or email SAVI@alarmlock.com.

**Request more information:**  
[www.securityinfowatch.com/11238845](http://www.securityinfowatch.com/11238845)



## ALARM LOCK

[www.alarmlock.com](http://www.alarmlock.com)

## Power over Ethernet Access Control Locks from SARGENT and Corbin Russwin



Power over Ethernet (PoE) Access Control locks from ASSA ABLOY Group brands Corbin Russwin and SARGENT offer substantial sustainability advantages. Named to Building Green's Top-10 Green Building Products for 2014, Corbin Russwin and SARGENT PoE locks reduce costs and components and minimize energy consumption, using 90% less power than traditional access control installations. The range of PoE locks includes the Corbin Russwin Access 700® PIP1 and Access 800® IP1 as well as the SARGENT Passport 1000 P1 and Profile Series v.S1. They take advantage of the existing Local Area Network (LAN) for both power and data, eliminating the need for

any additional power supply or electrical wiring. It re-uses existing IEEE 802.3af (PoE) infrastructure to streamline the installation process, reduce costs, and enable real-time communication. [www.intelligentopenings.com](http://www.intelligentopenings.com)

**Request more information:** [www.securityinfowatch.com/10715568](http://www.securityinfowatch.com/10715568)

## SARGENT Degree Key System

The Right Degree of Protection. The patented Degree system from SARGENT provides the right level of security for each opening in your facility with three levels of ANSI/BHMA Grade 1 protection, from patented keyway to UL437 certified. A common key for all three levels of security enhances key control and simplifies administrative procedures. Key blanks are controlled through authorized distribution and geographical protection is available. Available for mortise, rim, component and Large Format Interchangeable Core (LFIC) cylinders, SARGENT offers the right Degree of protection for every door in your facility. [www.sargentlock.com](http://www.sargentlock.com)



**Request more information:** [www.securityinfowatch.com/11238769](http://www.securityinfowatch.com/11238769)

## iCLASS SE Encoder from HID Global

HID Global's iCLASS SE Encoder — an ASIS Accolades winner — is a desktop solution and developer toolkit (DTK) that enables organizations to encode and instantly issue cards using a single device.

The multi-technology encoder makes it easier for customers to migrate from current technologies to the higher security, adaptability and portability of the company's iCLASS SE access control platform. The encoder provides an entirely open solution that allows organizations to encode multiple credential technologies, including third-party credentials, in order to upgrade existing card populations for use with iCLASS SE platform readers. The solution supports Seos®, iCLASS SE, standard iCLASS, MIFARE® Classic and MIFARE DESFire® EV1 and 125 MHz HID Prox® for encoding Prox credentials.

[www.hidglobal.com](http://www.hidglobal.com)

**Request more information:** [www.securityinfowatch.com/11176714](http://www.securityinfowatch.com/11176714)



## Linear's eMerge Access Control Platform

Linear LLC's eMerge® Elite-36™ embedded access control platform can support eight readers and up to 20,000 cardholders with as many as 80,000 cards. It is also capable of expanding to 36 doors and 72 readers with expansion modules, making upgrades painless with its easy set-up wizard, and options like power-over-Ethernet and elevator control modules. Features include out of the box ready, solid state embedded web server and Linux OS; reduced virus potential; no dedicated workstation hardware or software clients to manage; no database software licenses required, and a common software user interface across all eMerge E3 systems from basic to more powerful models. [www.linearcorp.com/e3emerge](http://www.linearcorp.com/e3emerge)

**Request more information:**  
[www.securityinfowatch.com/11201493](http://www.securityinfowatch.com/11201493)



## Classroom Intruder Cylinder Lock from PDQ

The Classroom Intruder Cylinder Lock from PDQ enables school staff members to check the locked/unlocked status of a door with an LED indicator, avoiding the need to open the door in order to check the outside lever.

An economical solution for upgrading classroom security and an easy retrofit, the cylindrical lock fits into a standard 161 door prep.

The Classroom Intruder Cylinder Lock is equipped with a side-positioned control button and red LED. To check if the lever is locked, pushing the button located on the inside of the lock will illuminate the LED — there's no need to risk opening the door in an emergency.

Available in both XGT and GT cylindrical lock platforms, the locks are offered with cylinder housings com-



patible with Best® Small Format Interchangeable cores, Schlage® Large Format Interchangeable cores and most others.

Keying options compatible with most key systems are available. Standard finish is 626 (US26D) satin chrome.

The locks may also be specified in other finishes. Tested and certified to ANSI/BHMA A156.2-2011 Grade 1 for Bored Locks and Latches, and UL 10C Listed for 3 hours. The XGT platform has been tested through more than 4 million cycles, four times the ANSI/BHMA Grade 1 standard. It's also been lever torque tested to 3000 inch-pounds, four times the ANSI/BHMA Grade 1 standard.

Call us for pricing and more information: 800.441.9692.

**Request more information:**  
[www.securityinfowatch.com/11238781](http://www.securityinfowatch.com/11238781)



## EX Series Small Format Cores from KSP

KSP is pleased to introduce the availability of its new EX Series small format cores, an affordable restricted or non-restricted keyway system. These cores are available in the popular BEST keyways such as A, B, C, D, E, F, G, H, J, K, L, M, Q and the Arrow 1C & 1D. These cores are operated by an elongated key which will allow you to restore integrity to a key system that has lost its security over time. A few "key" doors can easily be replaced with these EX Cores and the average length keys will not operate these particular doors but the elongated keys will operate the key system already in place. Restricted keyways are available thru contractually authorized distributors and locksmiths only. [www.iccore.com](http://www.iccore.com)



**Request more information:** [www.securityinfowatch.com/11238837](http://www.securityinfowatch.com/11238837)

## SARGENT PR100 Lock with Aperio™ Wireless Technology



The SARGENT® PR100 lock with Aperio™ wireless technology allow facilities to expand their access control footprint and enhance overall security by protecting medium security doors. Aperio utilizes wireless communication between the lock and a communications hub to connect to an online electronic access control system, significantly reducing the cost and inconvenience of traditional access control. Aperio is a global wireless platform from ASSA ABLOY that allows you to expand your access control footprint — quickly, easily, and affordably — using existing platforms you trust. Available across a range of locking hardware from ASSA ABLOY Group brands, Aperio provides the flexibility to address

a variety of applications throughout your facility.  
[www.intelligentopenings.com/aperio](http://www.intelligentopenings.com/aperio)

**Request more information:** [www.securityinfowatch.com/10715911](http://www.securityinfowatch.com/10715911)

## SARGENT SE LP10 Integrated Wiegand Access Control Lock

The SARGENT SE LP10 is SIO-enabled (SE) to offer the heightened security of HID Global's next generation access control platform. The SE LP10



supports multiple industry-leading credentials, bringing a new level of flexibility to the range of SARGENT Integrated Wiegand access control solutions. This makes it ideal for mixed credential populations or facilities transitioning to higher security credentials. It is also available in the SE LP10-F model for secure physical access projects that must comply with Personal Identity Verification (PIV) standards under Federal Information Processing Standards (FIPS) 201. The SE LP10 features a streamlined integrated design, which incorporates SARGENT ANSI/BHMA Grade 1 hardware with card reader, door position switch, and request to exit monitoring sensors, greatly reducing installation time. [www.intelligentopenings.com](http://www.intelligentopenings.com)

**Request more information:**  
[www.securityinfowatch.com/10715880](http://www.securityinfowatch.com/10715880)

## The Nation's Most Trusted Security Door Hardware Wholesaler

*JLM Wholesale has been proudly serving customers for nearly 30 years. Our highly trained sales associates, vast inventory, 24 hour access web site and strategic shipping locations ensure we are your best source for security door hardware products.*

*We stock top named products from Assa Abloy, Ingersoll Rand, Stanley Security Solutions and many, many more.*



**MI 800-522-2940 ♦ NC 800-768-6050 ♦ TX 877-347-5117 ♦ [JLMWHOLESALE.COM](http://JLMWHOLESALE.COM)**

**Request information:** [www.securityinfowatch.com/10214128](http://www.securityinfowatch.com/10214128)

# INSTALLATION TOOLS & EQUIPMENT

## Cable Prowler™ PRO Test Kit from Platinum Tools

### Full Color Cable Testing & Report Management

Cable Prowler™ combines the operations of a high-end cable and length measurement tester with the capacity to identify link status, link capability and PoE detection.

All of this functionality is combined with internal memory to save, download and output results in full color.

#### Features and Benefits:

- High-resolution color display
- Save and print test reports
- TDR technology
- Link capability and status
- Link light
- Tests RJ45, RJ12/11 & Coax
- PoE detection
- Smart remotes
- Color wire map
- Tone generation
- English/Spanish/French

#### Applications:

- Cat 3/5e/6/6A
- Coax
- Telephone

#### Kit Contains: P/N TCB360K1

- Cable Prowler™ Main Unit
- #1-8 Network/Tel Test and ID Remotes



- #1-8 Coax Remote Set
- #1-12 Data Remote Set
- Micro USB Cable
- No-Fault Cable – (Qty 2)
- RJ45 Port Saver
- RJ45 Alligator 12 Inch
- F Female to F Female Adapter F81 – (Qty 2)
- BNC Female-to-F Female Adapter
- BNC Female-to-F Male Adapter
- Durable Plastic Case
- Quick Start Guide

Call 805-384-2777 to learn more!

Request more information:

[www.securityinfowatch.com/11238879](http://www.securityinfowatch.com/11238879)



## Metal Protective Cabinets from STI

STI's Metal Protective Cabinets protect electrical and electronic equipment from hazardous parts and provide a degree of protection to enclosed equipment against ingress of solid foreign objects (falling dirt). A variety of sizes allow the enclosures to house significantly sized electronic devices. For indoor use, the enclosures mount on the wall enabling the units to be protected in their designated locations. Ideal for junction and power supply boxes, they have a continuous piano type hinge with the option of a key or thumb lock and 1/2, 3/4 inch conduit knockouts. Metal meets or exceeds Type 1 requirements, UL/cUL Listed. [www.sti-usa.com](http://www.sti-usa.com)



Request more information: [www.securityinfowatch.com/11116588](http://www.securityinfowatch.com/11116588)

## 19-inch Wall Rack Enclosure from VMP



Video Mount Products' ERWEN-12E 19-inch wall rack enclosure gets equipment off the floor and up on the wall when floor-standing equipment racks won't work. VMP designed the wall-mounted rack for both form and functionality, especially with the installer in mind. With adjustable four post rails, removable hinged wall plate and a reversible glass front door, the unit is the answer to the most demanding rack mount requirements. Features include: 12 rack spaces; adjustable front and rear rails threaded with standard 10-32 threading; vented top and bottom; top and bottom cable routing knockouts; reversible hinged tempered glass front door and removable hinged back panel; lockable, removable side panels (locks not included); and load capacity of 120 lbs. [www.videomount.com](http://www.videomount.com)

Request more information: [www.securityinfowatch.com/11118964](http://www.securityinfowatch.com/11118964)

## How did this guy get in your building?



## Bad hinges.

Worn hinges cause sticking doors. Despite all your time spent checking and rechecking them, just one door that won't close breaks security. Ensure building safety and gain time for other projects. Install SELECT geared continuous hinges, independently tested to endure more than 25,000,000 cycles (60+ years of use).

## Tighten security and fix doors forever.

Cycle testing plus U.S. Department of State 60-Minute Forced Entry/Ballistic Resistance certification confirms your door will close securely. It's why we can back SELECT hinges with the industry's only Continuous Warranty™. (See the tests and warranty on our website.)



**SELECT HINGES™**

SELECT Products Limited

800-423-1174

[select-hinges.com/wbb](http://select-hinges.com/wbb)



Request information: [www.securityinfowatch.com/10215943](http://www.securityinfowatch.com/10215943)

## CAT 6A Unshielded CMP & CMR from comCables



comCables new CAT 6A 10G Unshielded (UTP) CMP and CMR are UL Listed and are a high-performance data communications cable with voice, data, video and security capabilities — ideal for high-performance network installations. Equipped with four pairs of high quality 23 AWG solid bare copper conductors and a jacket available in blue, white, or yellow, the cables are designed so each of the individual pairs maintain the twist-spacing throughout the length of the cable right up to the termination point. It is quality manufactured to the ANSI/TIA 568-C.2 standard and meets UL 910, NFPA 262, and RoHS standards. The cable is available on 1000 ft increments on wooden spools. [www.comCables.com](http://www.comCables.com)

Request more information:

[www.securityinfowatch.com/11213424](http://www.securityinfowatch.com/11213424)

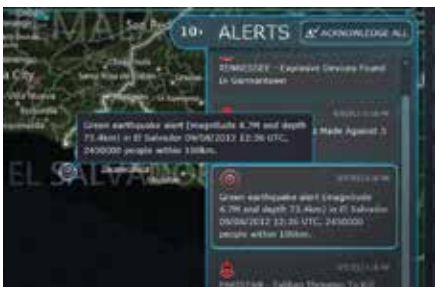
# ENTERPRISE & INTEGRATED SOLUTIONS



## Detex EasyKit Systems

The Detex EasyKit catalog number specifies everything you need for virtually any application, with one price and no problems. Illustrated here is the AODx10ERx1S-1 Automatically Operated Door EasyKit, which integrates the Advantex latch retraction exit device with Detex's low energy, automatic operator with pre-wired, built-in latch retraction power supply. Also included are two wireless ADA activation buttons, a power transfer, code-compliant signage and an easy-to-follow wiring diagram, helping make installation easy and mistake-free. The Detex AODx10ERx1S-1 was designed by our customers for applications at assisted living homes, airports, healthcare, shopping centers and any application where access control and a low-energy, automatic operator is required. Choose a pre-wired EasyKit System, or work with Detex to create your custom EasyKit. [www.detex.com](http://www.detex.com)

**Request more information:**  
[www.securityinfowatch.com/10217316](http://www.securityinfowatch.com/10217316)



## Visual Command Center 3.0 from IDV

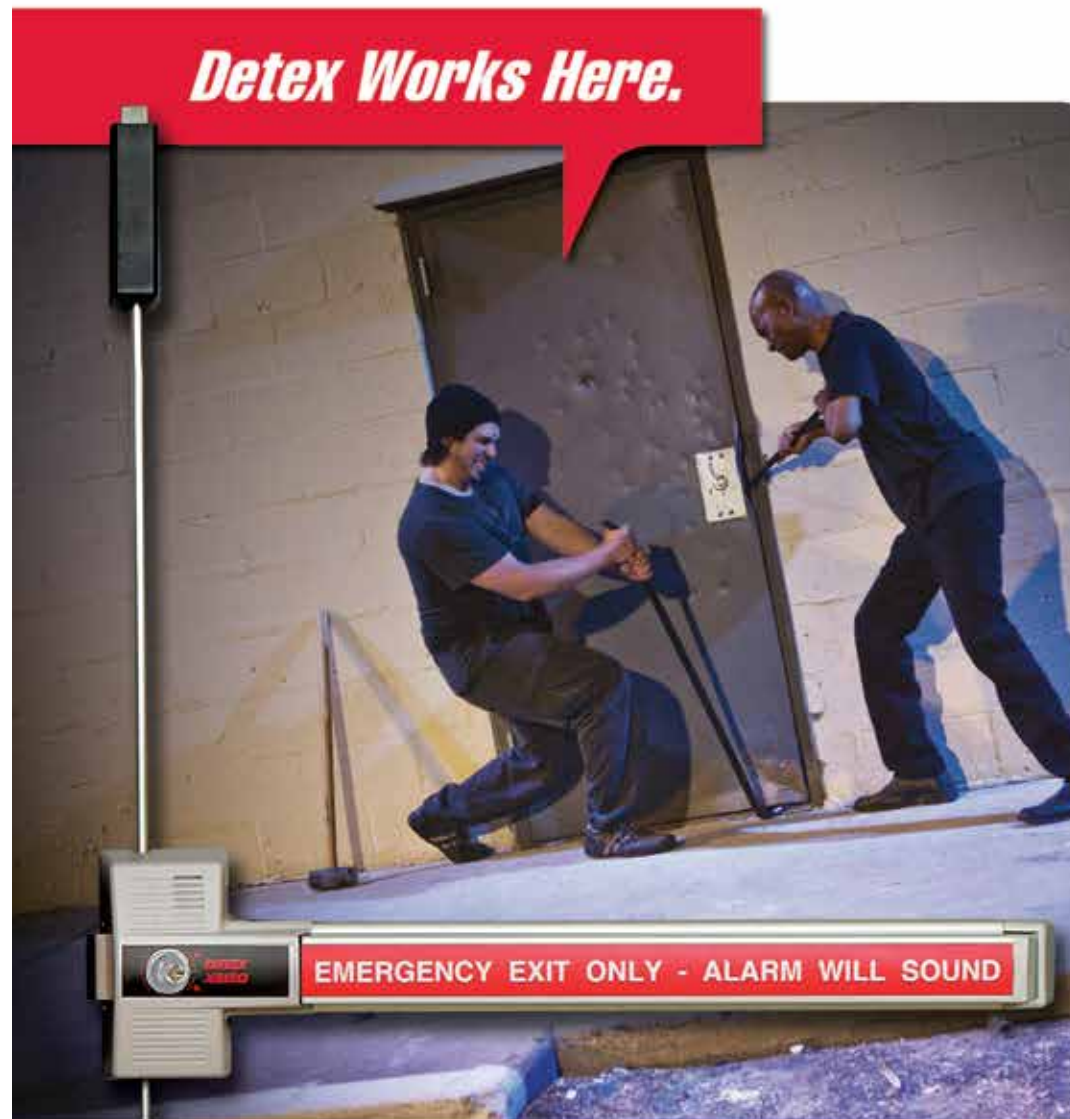
IDV Solutions' Visual Command Center 3.0 physical security and risk visualization (PSRV) software enables organizations to identify, evaluate, and take action against threats to their assets, including buildings, people and operations. It unites data from disparate sources — Web feeds, internal and external systems, and physical security devices — into a consolidated real-time view that includes a map and timeline. It alerts organizations when their assets may be threatened by risk events, ranging from severe weather to disease outbreaks or acts of terrorism. [www.idvsolutions.com](http://www.idvsolutions.com)

**Request more information:**  
[www.securityinfowatch.com/11149555](http://www.securityinfowatch.com/11149555)

## Napco's Total Integrated Security Solution

Napco Security Technologies Inc. (NASDAQ: NSSC) is a leading manufacturer of a wide array of innovative security products, engineering advanced technologies for more than three decades. New Napco Fusion™ is a "total integrated security solution" that provides seamless, interoperability of intrusion and fire protection, video, access control and locking from Napco's synergistic divisions, Napco Intrusion & Fire, Alarm Lock Networkx™, Continental CardAccess, and Marks USA. One security platform makes operation and deployment easier and more cost-effective than ever. Hardwire, wireless or hybrid technologies for flexible installation in any building/construction. For more contact us 1-800-645-9445. [www.napcosecurity.com](http://www.napcosecurity.com)

**Request more information:** [www.securityinfowatch.com/10711107](http://www.securityinfowatch.com/10711107)



## Our bad boy is stronger than these bad boys.

**A Detex exclusive, the 230X multi-point locking device raises the bar on back-door security.**

When the bad guys try to muscle in, the super-tough 230X keeps them out. Designed with extreme-duty, three-bolt construction, this device is built with a larger side bolt that goes deeper into the frame, plus solid steel connecting rods rather than less-reliable hollow rod/cable construction.

How tough is it? The bottom bolt goes 5/8-inch deep into the floor, preventing peeling up the bottom of the door. The largest side deadbolt in the category resists crowbarbing. And at the top corner, the solid steel deadbolt provides needed stability. Testing proves that a 230X secured door withstands 10,000 pounds of pull force.

Life safety and code compliant, the 230X is both panic hardware and a maximum-strength locking device. Ask us how this powerful new hardware can take the hit for your business, or go to [detex.com/230X/](http://detex.com/230X/).



**Where Trust is Built™**  
**DETEx**  
Life Safety and Security Door Hardware

800-729-3839 830-629-2900  
[www.detex.com](http://www.detex.com)

**Request information:** [www.securityinfowatch.com/10213445](http://www.securityinfowatch.com/10213445)

# ALARMS, INTRUSION & PERIMETER

## NAPCO Commerical Addressable Fire or Gemini Combo Burg/Fire Systems

Napco Security Technologies Inc.'s Commercial Platform is a full line of Commercial Fire or Combo Intrusion/ Fire Systems configurable for wireless, hardwire, analog, addressable or conventional technology devices.

Now offering speedier setup and installation with new Quick-Start faster programming and reliable UL Commercial Grade Wireless Fire & Burglary Devices installed in a fraction of the time. There is a new fire-only program menu and standard fire alarm system preset template you can build on. All you will need to do is enter the quantity and type of devices — they will be auto-inserted, mapping inputs to outputs and clearly, color-coded.

Auto-Learn discovers and identifies addressable devices on loops. It will preload descriptions, e.g., "smoke detector" — and list the quantity of modules, sensors and relays for each. The new Fast Track Diagnostics automatically distinguishes minor warnings from critical errors. Enhanced battery and voltage calculators too.



The NAPCO Commercial Platform includes built-in labor savings, incredible power, and feature-rich value that's easy to plan-out and standardize on for 255, 128 or 32 points of commercial wireless, analog addressable and/or 12V conventional installations; and it is fully compliant with the most rigorous industry standards, including UL864 9th Ed., NFPA72, SIA CP01 and more.

Features include easy AHJ calcs: up to 32AH standby separate for burg and fire; and remote/onsite uploadable smoke sensitivity reporting.

**Request more information:**  
[www.securityinfowatch.com/10524477](http://www.securityinfowatch.com/10524477)



[www.napcosecurity.com](http://www.napcosecurity.com)

## Maximum Security Slide Gate Operators from DoorKing

DoorKing, a leading manufacturer of vehicular gate operators for more than 60 years, offers a complete line of maximum security slide gate operators.

The operators are ideal for airports, seaports, military bases, government buildings, critical infrastructure (electric plants, water treatment facilities, dams, etc.) or for any application where a high degree of perimeter security must be maintained. All models have advanced features that include anti-tailgating, adjustable mid-stop and tamper-proof internally driven limit switches.

The model 9210 is the basic model and will operate slide gates weighing up to 3,000 lbs. at a fixed speed of one foot per second. Other 9200 series models incorporate a speed



control module that allows the gate speed to be adjusted from one to two feet per second, have soft-start and soft-stop functions and will operate gates up to 8,000 lbs.

The 9500 series operators are designed for very large gates used in applications that have the highest security requirements.

These operators include adjustable speed control and soft-start and soft-stop functions. Some models have an emergency close feature that, when activated, will operate the gate at up to six feet per second to ensure the perimeter is secured as quickly as possible. With motors ranging from 3 HP up to 7.5 HP, the 9500 series are designed for gates weighing up to 20,000 lbs.

**Request more information:**  
[www.securityinfowatch.com/10759819](http://www.securityinfowatch.com/10759819)



[www.doorking.com](http://www.doorking.com)

## NightHawk® Vehicle Pursuit-Stopping System from Pacific Scientific



The NightHawk® is the first remotely deployed and retracted vehicle pursuit-stopping system. It is a smart combination of high tech engineering and proven Stop Stick® tire deflation technology packaged into a small case weighing less than 30 lbs.

The NightHawk takes the first responder out of the way of oncoming traffic and eliminates the need to

throw a stick across the road at just the right moment.

Fairly simple to operate, it can be placed on the side of the road and can cover up to 24 feet of lane space when deployed. With just a click of a remote control RF frequency button (up to 100 ft. away), the system deploys in less than 2 seconds in front of the targeted vehicle.

The target vehicle gets no time to react as it runs over the spikes eventually resulting in deflated tires and the Stop Sticks® are encased in protective sleeves for added safety.

The system can then be remotely retracted with a second click of a button which ensures that no other vehicles are affected. The target vehicle's tires are also deflated at a controlled pace allowing it to come to a safe stop.

**Request more information:**  
[www.securityinfowatch.com/11239005](http://www.securityinfowatch.com/11239005)



[www.psemc.com/product-families/vehicle-arresting-technologies](http://www.psemc.com/product-families/vehicle-arresting-technologies)

## AX-TW200 Photoelectric Beam Tower from Optex

The AX-TW200 is a double sided, freestanding photoelectric beam tower housing OPTEX wireless or hardwired photoelectric beams.

When a site plan is provided, we'll custom-build our towers and pre-install our photoelectric beams in them based on the job site specifications, all at no extra charge. We'll even ship them directly to the job site, labeled for position and ready to be installed.

In addition to being aesthetically pleasing, the AX-TW200 allows OPTEX beams to be double stacked for added security, conceals the beam height and protects them against environmental elements and vandalism.

The flexibility and durability of the AX-TW200 photoelectric beam



tower housing make it well suited for substations, oil and gas facilities, transportation, correctional facilities, storage and impound yards, critical infrastructures, industrial complexes, solar fields and anywhere OPTEX photoelectric detectors are required.

**Request more information:**  
[www.securityinfowatch.com/11239026](http://www.securityinfowatch.com/11239026)



[www.optexamerica.com/security-products/ax-tw200](http://www.optexamerica.com/security-products/ax-tw200)

## Pit-BUL Vehicle Stopping System from Pacific Scientific

The Pit-BUL, which stands for Pit-Ballistic Undercarriage Lanyard, uses innovative technology to immobilize a wide range of vehicles and to cover a wide spectrum of applications, including perimeter security, high-value installation entrances, roadway checkpoints, border crossings, airports, bases, university campuses, as well as many other applications.

The system is concealed in the form of a speed bump, enabling an element of surprise. Pit-BUL remains passive until remotely activated and quickly deployed by the user from as far as 300 feet away.

Once activated, the target vehicle is stopped safely and cannot escape capture. The system is so easy to use, vehicles may be returned undamaged to drivable condition in less than 10 minutes. Unlike most traditional vehicle arresting devices,



the technology and innovation behind Pit-BUL offers an element of safety to the operator, driver and passengers.

The non-lethal design could ideally eliminate a tragic outcome while stopping a vehicle. Over 300 tests have been performed on the Pit-BUL without any injuries or anomalies, and effective in capturing a vehicle up to 6,000 pounds. Pit-BUL supports non-lethal alternatives to prevent civilian casualties.

**Request more information:**  
[www.securityinfowatch.com/11239034](http://www.securityinfowatch.com/11239034)



[www.psemc.com/product-families/vehicle-arresting-technologies](http://www.psemc.com/product-families/vehicle-arresting-technologies)

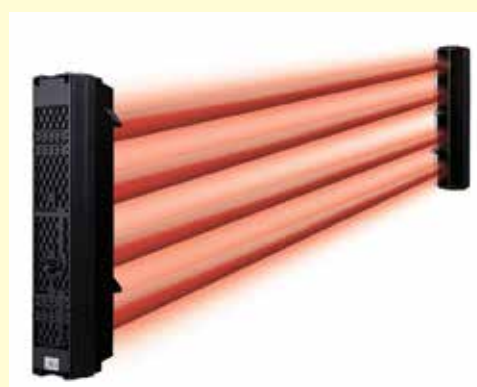
## Optex iSeries SL-350QFRi Photoelectric Detector

Optex expands on its industry leading outdoor, battery-powered iSeries intrusion line with the SL-350QFRi, a 350 ft. battery-powered photoelectric detector requiring no trenching or wiring.

The iSeries SL-350QFRi includes an Inovonics wireless EN1941 transmitter pre-installed and comes with four batteries per set, with the option of expanding to eight for up to 10 years of battery life.

With wireless transmitters installed and batteries included, a quicker set-up time is achieved and less time is spent on the job site. Because no trenching or wiring is required, less labor is involved and end-users will experience less down time to business operations.

The SL-350QFRi is compatible with the OPTEX AX-TW200 line of beam



towers for a clean, concealed, wireless mounting option, and its flexibility and durability make it well suited for substations, oil and gas facilities, transportation, correctional facilities, storage and impound yards, critical infrastructures, industrial complexes and solar fields.

**Request more information:**  
[www.securityinfowatch.com/10753882](http://www.securityinfowatch.com/10753882)



[www.optexamerica.com/security-products/sl-350qfri](http://www.optexamerica.com/security-products/sl-350qfri)



## WDE EasyKits

The WDE EasyKits from Detex provide a secure two-point locking system with 15-second delay and 100dB alarm when someone attempts to exit. The WDE EasyKit is designed for outdoor applications and is perfect for garden center gates, amusement parks, sports arenas and any location exposed to weather or moisture where delayed exit is required. Although ideal for retail in helping to prevent theft, in applications such as outdoor childcare and assisted living homes, WDE EasyKit can also be used to help protect those trying to exit. Use a standard WDE EasyKit such as WDEx10EXx1S-1 or call to create your custom EasyKit, all EasyKits include best in class components and easy to follow wiring and riser illustrations.

[www.detex.com](http://www.detex.com)

**Request more information:**  
[www.securityinfowatch.com/10217290](http://www.securityinfowatch.com/10217290)

**LocDown™**  
by MARKSUSA®



Available in all lever and escutchen trim

365 Bayview Ave, Amityville, NY 11701 • 631-225-5400 • 800-526-0233 • Fax 631-225-6136 • [www.marksusa.com](http://www.marksusa.com)



**For added safety in an emergency,**  
teachers can lock their classroom doors from the inside  
with the Loc-Down™ Series Classroom locks by Marks USA.

Typical Classroom function cylindrical locksets are designed to be locked or unlocked from the exterior, with the interior always in an open position. The new Loc-Down™ Classroom Intruder Lockset by MARKS USA, is designed to be locked or unlocked from the exterior, always open on the interior, but allows in emergency life safety situations, the teacher to secure the classroom without stepping into the hallway to lock the outside handle.

**Request information:** [www.securityinfowatch.com/10214311](http://www.securityinfowatch.com/10214311)



## Sprinkler Monitoring Panel from Potter Electric Signal Co.

Potter Electric Signal Company LLC's PFC-6006 Sprinkler Monitoring Panel is the solution to the industry need for a small, inexpensive, yet highly robust, fire alarm panel created specifically to handle flow, pressure and tamper switch notifications. The first zone of the panel is selectable as a Class A or Class B water flow input and the other five zones are selectable from a menu of options including two-wire smoke detection. The panel has a 1.0 amp power supply that powers the panel, charges the batteries and supplies 0.5 amps to a notification appliance circuit and 0.5 amps of auxiliary power. Potter's exclusive Quadrasync technology allows the PFC-6006 to synchronize A/V devices from Potter/AMSECO®, Wheelock®, Gentex®, and System Sensor®. [www.pottersignal.com](http://www.pottersignal.com)

Request more information: [www.securityinfowatch.com/11174169](http://www.securityinfowatch.com/11174169)



This is **YOUR**  
Central Station

Our Services are Unique

Monitoring America is not for sale  
and will never be sold !!!

We are a "Not for Profit" business.  
**Service**, not Profit is our Primary Goal

Work with a **Partner**  
not a Competitor

Call today and take advantage of our

**FREE Monitoring**  
**800-879-1438**

[www.monitoirngamerica.com](http://www.monitoirngamerica.com)  
[info@monitoringamerica.com](mailto:info@monitoringamerica.com)

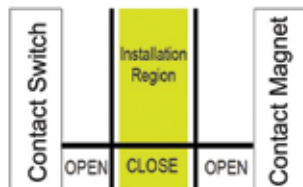
Request information: [www.securityinfowatch.com/10490593](http://www.securityinfowatch.com/10490593)

## HIGH SECURITY CONTACTS

Immediately available in 11 contact styles,  
High-Security switches create the ultimate  
security protection for Jewelry Stores, Document  
Vaults, Gun Safes and other high value targets.

HIGH SECURITY SWITCH

PRINCIPLE OF OPERATION AND INSTALLATION



The high security field is created by balancing the  
external and internal magnetic fields. Attempting  
to bring an external magnet to defeat the security  
switch triggers the alarm.

**TANE ALARM PRODUCTS**

906 JERICHO TURNPIKE, NEW HYDE PARK, NY 11040  
Tel: 800-852-5050 • 516-328-3351 • Fax: 516-326-9125  
[www.tanealarm.com](http://www.tanealarm.com) • E-MAIL: [info@tanealarm.com](mailto:info@tanealarm.com)

Request information: [www.securityinfowatch.com/10215295](http://www.securityinfowatch.com/10215295)

## FAAST Smoke Detection from Notifier

Notifier by Honeywell's new intelligent version of its FAAST (Fire Alarm Aspiration Sensing Technology) detector provides very early warning of smoke for high-value and critical facilities, as well as within extremely challenging applications. The intelligent FAAST detector's ability to directly integrate with Notifier fire alarm systems enables it to supply more detailed alarm, fault and trouble information, thereby simplifying system monitoring, maintenance and overall design. The detector requires no additional hardware, software or special wire, and by integrating with Notifier fire alarm systems like many other addressable detectors, aspiration system installation becomes very straightforward. The Notifier system can support up to 31 intelligent FAAST detectors on a single loop for applications such as correctional facilities, data center sand warehouses where the area of coverage is expansive. [www.notifier.com](http://www.notifier.com)

Request more information: [www.securityinfowatch.com/11218278](http://www.securityinfowatch.com/11218278)



## Low-Frequency Sounders from System Sensor

System Sensor's low-frequency notification appliances meet NFPA 72 requirements for all commercial sleeping spaces that begin in 2014. The low frequency sounders and sounder strobes integrate directly with fire alarm control panels and include all the same features and benefits as the rest of the company's SpectrAlert Advance line, including a plug-in design and onboard shorting spring that simplifies installation and reduces costly ground faults. "For people living in states and regions that have adopted the 2010 or 2013 edition of NFPA 72, all new commercial sleeping spaces will be required to utilize an audible device that produces a low frequency tone centered around 520 Hz effective January 1, 2014," says Rebecca

Peterson, System Sensor Product Marketing Manager. [www.systemsensor.com](http://www.systemsensor.com)

Request more information: [www.securityinfowatch.com/11129617](http://www.securityinfowatch.com/11129617)



## FireSwitch NAC Power Extenders from Altronix

Altronix's FireSwitch NAC Networked Power Extenders offer a host of intelligent features, including local and remote programming and status monitoring. These new features provide real-time status conditions to cost-effectively determine whether or not a service call is required. FireSwitch is also compatible with protocols from the industry's leading manufacturers of fire alarm panels. The units feature an LCD display on the enclosure's front panel, and an Ethernet port for local or remote programming and monitoring. NAC outputs are selectable as Class B, Class A or continuous Aux power for a maximum of eight (8) Class B, four (4) Class A or eight (8) continuous Aux power outputs — or a combination of all with battery back-up. In addition, units feature a Class 2 rated power-limited Aux output. [www.altronix.com](http://www.altronix.com)

Request more information: [www.securityinfowatch.com/10916708](http://www.securityinfowatch.com/10916708)



## Combo Fire/CO Detector from Gamewell-FCI



Gamewell-FCI by Honeywell's 4-Warn/CO detector meets new code requirements by combining both fire and carbon monoxide (CO) detection into one device. New York City is one of an increasing number of municipalities across the U.S. that now require CO detection in addition to fire detection in newly constructed hotel guest rooms, as well as in other types of commercial sleeping occupancies. The code requires an audible, in-room alert when either fire or CO is detected, and the detector must also report to a panel that reports to a central station that is monitored 24/7, with fire and CO alerts communicated independently. [www.gamewell-fci.com](http://www.gamewell-fci.com)

Request more information: [www.securityinfowatch.com/11229570](http://www.securityinfowatch.com/11229570)

# KEYS, KEY CONTROL & AUTOMOTIVE



## Cadillac RKE Remotes from Strattec

STRATTEC Security Corp. continues to increase its offering of General Motors remotes with the addition of 12 Cadillac CTS and Escalade remotes covering model years 2007-2014. They are factory originals and come in configurations anywhere from 3 to 6 buttons. These remotes are labeled for individual driver #1 and #2 for vehicle driver preference. Driver preference remotes are part of the Cadillac system that keeps settings intact for each individual driver. General on-board programming instructions (where applicable) can be found in our 2014 comprehensive catalog under OBP #16. Many GM vehicle remotes have started to require either a dealer or aftermarket tool to program after 2010. All current GM part numbers can be found along with the applications at: <http://aftermarket.strattec.com>

**Request more information:**  
[www.locksmithledger.com/11239192](http://www.locksmithledger.com/11239192)



## Ford RKE Remotes from Strattec

STRATTEC is pleased to introduce two Ford compatible RKE remotes into the locksmith market. These remotes are both 3- and 4-button configuration and replace fobs from 1995-2013 vehicles. These remotes cover Ford, Lincoln, Mercury and Mazda vehicles and can generally be programmed with on-board procedures or an aftermarket tool. Instead of shells or refurbished remotes, you can now give your customer a completely new Ford remote from STRATTEC. Most Fords use general on-board programming instructions (where applicable) and can be found on our website. Some remotes may require dealer or aftermarket programming tools. All current Ford part numbers can be found along with the applications at <http://aftermarket.strattec.com>

**Request more information:**  
[www.locksmithledger.com/11239188](http://www.locksmithledger.com/11239188)

## AccessPoint KeySafe Key Management System from Kidde

Kidde takes home safety to another level with our AccessPoint KeySafe Original. This durable KeySafe holds up to five keys, providing easy access for family and friends, while the StrongBox design deters individuals looking for unauthorized access to your home or property. Simply use the included hardware to permanently attach KeySafe to any wall or flat surface for unmatched quality and security, and to enjoy accessible key storage for homes, outbuildings, sheds and farm implements. [www.kidde.com](http://www.kidde.com)

**Request more information:** [www.securityinfowatch.com/11239219](http://www.securityinfowatch.com/11239219)



## TAKE PRIDE IN A JOB WELL DONE

**You wouldn't want to compromise your work and reputation — BUY STRATTEC ORIGINALS!**

The jobs you are most proud of are the ones that employed your special skills, product supplied by your STRATTEC authorized distributor, and product manufactured by the largest OE manufacturer of automotive locks and keys in the world.

For more information, please visit <http://aftermarket.strattec.com>

3333 West Good Hope Road | Milwaukee, WI | 877.251.8798

© 2011 STRATTEC SECURITY CORPORATION. All Rights Reserved. AS6938 - 10.11

**Request information:** [www.securityinfowatch.com/10215947](http://www.securityinfowatch.com/10215947)

## Locking Keystone Security Jacks for Secure Voice and Data Protection from Quest Technology



Quest Technology now offers a new patented technology for the securing of both data and voice using standard patch cables and our award winning LocJack keystone security jacks. This innovative technology is available in RJ12 and RJ45 versions and requires nothing more than a LocJack keystone security jack and its proprietary security key.

This keystone jack is designed with a high-density slim-style profile for use in all standard and high-density Keystone style wall plates, surface-mount

boxes and keystone patch panels. The locking and port-blocker features are built into each individual jack providing a secure fastening of the patch cord from accidentally or intentionally being removed or inserted by unauthorized personnel.

LocJack does not require special cables and is the most effective way to secure a network fast. It offers ideal protection for high-security environments at a cost-effective price and are both UL & ETL certified.

With security concerns at an all-time high, unauthorized removal or insertion of network cables is a preventative measure that needs to be taken in high-traffic areas such as hospitals, schools, airports, government facilities and IP camera surveillance locations.

**Request more information:** [www.securityinfowatch.com/11239233](http://www.securityinfowatch.com/11239233)



## IDS to Detect Advanced and Zero-Day SQL Injection Attacks from DB Networks

DB Networks IDS-6300 next generation core IDS immediately detects advanced SQL injection attacks — even the most obfuscated and advanced SQL injection attacks — through its patent-pending SQL behavioral analysis technology. The unit works passively, in the core of the IT infrastructure, and is operationally transparent. Once operational, it rapidly learns the unique environment in which it's operating. From that learning, it creates a unique multi-dimensional behavioral model of how an application generates its dynamic SQL statements to access the database. Each SQL statement from the application is then subjected to a thorough lexical analysis and SQL semantic comparison analysis against the behavioral model. Any rogue SQL statements are immediately identified and an alarm procedure is invoked. [www.dbnetworks.com](http://www.dbnetworks.com)



**Request more information:** [www.securityinfowatch.com/11239249](http://www.securityinfowatch.com/11239249)

## COMMUNICATIONS

### Wall Mount Expander Plates from Gentex



Gentex Corp.'s wall mount expander plate is used in conjunction with a Gentex speaker or wall mount speaker/strobe for Mass Notification System (MNS) and Emergency Communication System (ECS) applications. The GEP and GEPS Series was designed for various warning and emergency applications, including security, severe weather, evacuation and emergency response. It comes available with amber, blue, green or red lens — all with a white faceplate — and mounts to a standard 4 x 2 1/8" deep back box. It is ANSI/UL 1638 listed. [www.gentex.com](http://www.gentex.com)

**Request more information:** [www.securityinfowatch.com/11239265](http://www.securityinfowatch.com/11239265)

### Mobile Command Center Interface from Metis Secure

Metis Secure has launched a mobile interface that enables safety and security professionals to instantly broadcast actionable alerts and instructions to their sites around the clock from any location, using a mobile phone or tablet. With the new mobile Command Center interface, designated personnel can launch instant, pre-recorded alerts to the IP phones, computer screens, digital signs, PA speakers, and other facility devices, including Metis Secure Help Stations. In addition, they can quickly build and send custom alerts and directives using text-to-speech. This helps ensure that people throughout a facility or campus can respond much more quickly and effectively in an emergency. [www.metissecure.com](http://www.metissecure.com)



**Request more information:** [www.securityinfowatch.com/11239268](http://www.securityinfowatch.com/11239268)

### Self Diagnostic-Capable Paging Module from Talk-a-Phone



Talk-a-phone has released new self-diagnostic and reporting features for its VOIP-500 Series Phone / WEBS® Paging Module. With the company's latest public release of the VOIP-500 firmware, these devices can now perform a number of self-diagnostics on a scheduled basis, including checking the status of built-in button(s), microphones and speakers. It can report via an email, a phone call or an activation of the Auxiliary Output interface. For diagnostics of the VOIP-500 Series Phone built-in speaker/microphone or WEBS speaker array, a pre-configured tone is played from the speaker(s) of the tested device and is recorded via the built-in microphone of the VOIP-500 Series Phone for analysis. [www.talkaphone.com](http://www.talkaphone.com)

**Request more information:** [www.securityinfowatch.com/11239281](http://www.securityinfowatch.com/11239281)



33 Hermon St  
Worcester, MA 01610  
Phone 800-577-5397  
Fax 508-753-2183  
[www.iccore.com](http://www.iccore.com)

Your Source For Interchangeable Core Products

Interchangeable with Best - Arrow - Falcon

**Quality Price Delivery**

That's what KSP is all about!



**Request information:** [www.securityinfowatch.com/10836464](http://www.securityinfowatch.com/10836464)

# Brains, and beauty

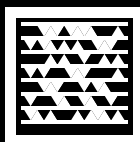
## Intelligent, stylish access control with WiFi

It's love at first sight with the IN120 WiFi lock from ASSA ABLOY Group brands CORBIN RUSSWIN and SARGENT. Facility managers are fans of how it reduces installation time and lets them add access control at a fraction of the cost. Architects like having a variety of finishes and levers to match any environment seamlessly. IT executives appreciate its compatibility with existing and evolving WiFi systems and standards. Looking to settle down with a security solution? The INtelligent, INnovative and INspiring IN120 could be The One.

[IntelligentOpenings.com/IN120](http://IntelligentOpenings.com/IN120)



**ASSA ABLOY**



Scan this Microsoft® Tag using  
your mobile phone to learn more.

Copyright © 2013, ASSA ABLOY, Inc. All rights reserved.

Available from ASSA ABLOY Group brands:  
CORBIN RUSSWIN | SARGENT

Request information: [www.securityinfowatch.com/](http://www.securityinfowatch.com/) 10212899

The global leader in  
door opening solutions



# Where Experts Like You Find Expert Advice



**APC** AUTHORIZED  
PARTS CENTER

Security Lock Distributors' new Authorized Parts Center gives you complete access to our full inventory of electrical and mechanical parts, products, and components from all Ingersoll Rand Security Technologies brands.

To talk to a Technical Sales Representative who specializes in parts, call us today at 800-847-5625, then press 3 to be connected to our Authorized Parts Center.

800-847-5625 • [www.seclock.com](http://www.seclock.com)

**FALCON IVES LCN VON DUPRIN® SCHLAGE**

Request information: [www.securityinfowatch.com/10215009](http://www.securityinfowatch.com/10215009)