

# BIG BOOK

www.SecurityInfoWatch.com

THE SECURITY INDUSTRY'S PRODUCT GUIDE

## Avigilon Control Center Core



Avigilon is addressing the security needs of small businesses with the newest edition of its Avigilon Control Center Core software. This entry-level version of the already award-winning network video management software delivers advanced high-definition surveillance capabilities, ease of use and superior image quality to small businesses. Many small businesses — such

as retailers, convenience stores and small office buildings — face security concerns similar to those of larger companies, but they are constrained by smaller budgets and a lack of dedicated security staff. As a result, small businesses are increasingly looking for affordable, easy-to-use HD surveillance systems. Leveraging Avigilon's High-Definition Stream Management (HDSM) technology to achieve the best possible image quality while using less bandwidth and less powerful workstations for lower costs, Avigilon Control Center Core delivers the following features and benefits:

- A complete system for reviewing live and recorded HD images;
- Accommodates conventional and PTZ analog cameras, as well as a broad range of third-party IP cameras and encoders, enabling a budget-conscious migration to HD;
- Simple and intuitive user interface for full control over surveillance video playback to quickly retrieve evidence; and
- Robust searching enables quick and accurate navigation of large amounts of recorded HD video with camera-specific event logs.

Now, small businesses can customize an effective security solution that works for them.

Select enquiry #500

**AVIGILON**  
THE BEST EVIDENCE™

www.avigilon.com

## NAPCO Combo Burglar/Fire Systems



Napco Security Technologies Inc., recently introduced its Napco Commercial Platform™, a full line of Commercial Fire or Combo Intrusion/ Fire Systems configurable for wireless, hardwire, analog, addressable or conventional technology devices.

Meticulously engineered to plain do more, the NAPCO Commercial Platform includes built-in labor savings, incredible power, and feature-rich value that's easy to plan-out and standardize on for 255,

128 or 32 points of commercial wireless, analog addressable and/or 12V conventional installations; and it is fully compliant with the most rigorous industry standards, including UL864 9th Ed., NFPA72, SIA CP01 and more.

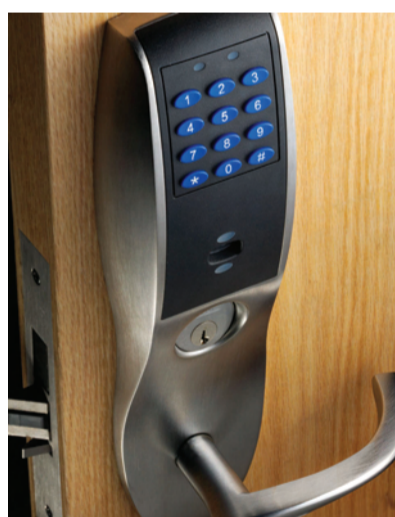
Knowing what a real-world installation requires, the system features more value-adds built in, all on-board: 7 Amps of power, 4 NACs (expandable), built-in, dual line DACT and strobe/horn synch module.

More handy features include easiest AHJ calcs: up to 32AH standby separate for burg and fire; and remote /onsite uploadable analog smoke sensitivity reporting. The line includes a full complement of peripherals and wireless, analog, addressable and conventional devices listed for use with it, plus NAC extenders and 24V & 12V Regulated Power Supplies backward compatible for all Gemini Control Panels. Ask for the NAPCO Commercial Platform at your Napco distributor. Free training certification classes and overviews are given both as webinars & in the field and earn security professionals up to 8 ceu credits. Go to [napcosecurity.com/training](http://napcosecurity.com/training) for more details.

Select enquiry #501

**NAPCO**

www.napcosecurity.com



## SARGENT Profile Series

The SARGENT Profile Series v.S1 (PoE) and v.S2 (WiFi) IP-Enabled Locks take advantage of existing network infrastructure to provide advanced security and easier, more cost-effective installations. Available in exit device, mortise and cylindrical lock configurations, they offer reliable communication, advanced management capabilities, and real-time alarm notification.

The Profile Series v.S1 and v.S2 locks feature ANSI/BHMA Grade 1 hardware and are available with HID® 125 kHz proximity or 13.56 MHz iCLASS® technology, and optional keypad.

The SARGENT Profile Series v.S1 brings the power of the network to door hardware. It uses IEEE 802.3af Power over Ethernet (PoE)-enabled network infrastructure for both power and data and provides the same real-time communication as traditional access control. Non-proprietary cable, PoE switches, and midspans facilitate cost-effective installations.

The Profile Series v.S2 intelligent WiFi locks offer the ability to extend the reach of your access control systems using a building's existing 802.11b/g WiFi infrastructure. The v.S2 offers complete access control functionality and is ideal for locations where it would be difficult or cost-prohibitive to install a wired lock.

Select enquiry #502

**SARGENT**

**ASSA ABLOY**

www.intelligentopenings.com

## Trine Electric Strikes

Trine introduces the new 4850-PoE and 4850-LCD. The low current draw, no cutting to install, and flexible design combines to make this a versatile option for PoE and access control systems of any type.

Trine Access Technology designed the 4850-PoE and 4850-LCD to work within PoE environments, automatic door installations, or various access control systems (such as Com, card readers/proximity, and keypads). These electric strikes help to eliminate the need for an additional power supply for the strike or to reduce its size for every day installations.

The 4850-PoE requires .260 mA (3.12 Watts) at 12DC, and the 4850-LCD require .135 mA (3.24 Watts) at 24DC, which meets the requirements for .300 mA systems or provides additional flexibility for .500mA and higher systems. The low current draw allows the use of smaller and less expensive power supplies when installing any access control system.

Just like Trine's standard 4850 electric strike, the 4850-PoE provides four-strike thicknesses (1/2", 5/8", 3/4" and 7/8") by supplying two spacer plates. The patented 6-pin anchoring system provides the highest level of strength and stability for any surface mounted strike — making this the strike for rim panic devices.

Save money on your power supply on every day installations — Try a 4850-PoE or 4850-LCD today.

Select enquiry #503



**TRINE**  
ACCESS TECHNOLOGY

www.trineonline.com



CYGNUS SECURITY MEDIA



# The Ultimate Personal Emergency Response System



- Choose the Central Station of Your Choice
- Choice of Contact ID or "4x2" Formats
- Remotely Programmable Features
- Multiple Pendant Capability
- Water Resistant Pendant
- Private Label Capability
- Line Seizure Relay

## Your Call Center



Voice coverage for typical PERS System



LifeSentry Full house coverage



LifeSentry allows your subscribers to communicate with your central station instantly and efficiently from anywhere in and around their home. They can speak and listen directly through the world's smallest two-way voice communicator.



US Patent #5,521,582  
Canadian Patent #2,080,921  
Other Patents Pending  
Copyright 2012 LogicMark, LLC



8625 Hampton Way; Fairfax Station, Virginia 22039  
Tel: 800-519-2419 www.LogicMarkSecurity.com

Visit [www.securityinfowatch.com/st/e/inquiry](http://www.securityinfowatch.com/st/e/inquiry) and select inquiry #350 for more information

SDG

Call to speak with a LifeSentry representative and learn the name of your nearest distributor.

# TABLE OF CONTENTS

# BIG BOOK

Winter 2011

**Access Control & Door Hardware** ..... Pages 4-11

**Alarms, Intrusion Detection & Central Stations**..... Pages 12-13

**Fire & Life Safety**.....Page 14

**Video Surveillance**..... Pages 16-18

**Emergency Communications**.....Page 19

**Enterprise Security & Building Management**.....Page 20

**Automotive Products**.....Page 21

**Visitor Management** .....Page 22

**Power & Transmission Supplies**.....Page 22

## ADVERTISER'S INDEX

Advertiser	RS#	Page #	Advertiser	RS#	Page #
<b>Alarm Lock Systems, Inc.</b> .....	366	B23	<b>Marks USA</b> .....	364	B20
<i>www.alarmlock.com (800) 252-5625</i>			<i>www.marksusa.com (800) 526-0233</i>		
<b>Data Card Group</b> .....	363	B19	<b>Napco Security Systems Inc</b> .....	359	B15
<i>www.datacard.com (800) 356-3595</i>			<i>www.napcosecurity.com (800) 645-9445</i>		
<b>Detex Corp</b> .....	352	B7	<b>Sargent Manufacturing Company</b> .....	351	B5
<i>www.detex.com (800) 729-3839</i>			<i>www.sargent.com (800) 727-5477</i>		
<b>DKS Door King Systems</b> .....	354	B10	<b>Security Central</b> .....	357	B13
<i>www.doorking.com (800) 826-7493</i>			<i>www.security-central.com (800) 438-4171</i>		
<b>IQinVision</b> .....	362	B18	<b>Security Lock Distributors</b> .....	367	B24
<i>www.iqeye.com (877) 850-0805</i>			<i>www.seclock.com (800) 847-5625</i>		
<b>KBC Networks</b> .....	360	B16	<b>Select Products Limited</b> .....	353	B9
<i>www.kbcnetworks.com (888) 366-4276</i>			<i>www.select-hinges.com (800) 423-1174</i>		
<b>LenelSystems International</b> .....	355	B11	<b>STRATTEC Security Corp</b> .....	365	B21
<i>www.lenel.com (800) 788-5095</i>			<i>http://aftermarket.strattec.com (414) 247-3333</i>		
<b>Lockmasters Inc</b> .....	358	B14	<b>Takex America, Inc.</b> .....	356	B12
<i>www.lockmasters.com (800) 654-0637</i>			<i>www.takex.com (877) 371-2727</i>		
<b>LogicMark</b> .....	350	B2	<b>Theia Technologies</b> .....	361	B17
<i>www.LogicMark.com (800) 519-2419</i>			<i>www.theiatech.com (503) 570-3296</i>		

**ABOUT THE eINQUIRY SYSTEM:** If you are interested in receiving direct information from individual vendors about one or more of the products or advertisers listed in this magazine, please visit [www.securityinfowatch.com/ste/einquiry](http://www.securityinfowatch.com/ste/einquiry) and input the corresponding enquiry number. Locksmith Ledger subscribers may use either the Web portal, or use the Reader Service card located in your December directory issue to circle the numbers.

## CYGNUS BUSINESS MEDIA

### The Big Book

is a publication of Cygnus Business Media  
3 Huntington Quadrangle, Suite 301N.,  
Melville, NY 11747 USA  
Phone: (631) 845-2700 • Fax: (631) 845-2736  
and is a supplement to *Locksmith Ledger*,  
*Security Dealer & Integrator* and  
*Security Technology Executive* magazines.

#### Editorial

Managing Editor ..... Paul Rothman  
Editor, *Locksmith Ledger* ..... Gale Johnson  
Editor, *Security Dealer & Integrator* ..... Deborah O'Mara  
Editor/Publisher, *Security Technology Executive* ..... Steve Lasky  
Editor/ Assoc. Publisher, *SecurityInfoWatch.com* ..... Geoff Kohl  
Editorial Director ..... Geoff Kohl

#### Art & Production

Art Director ..... Elizabeth C. Barbieri  
Production Manager ..... Tina Kennedy

#### Publishers

Publisher, *Locksmith Ledger*..... Nancy Levenson-Brokamp  
Group Publisher, *Security Dealer & Integrator*; *Security Technology Executive*; *SecurityInfoWatch.com* ..... Steve Lasky  
Assoc. Publisher, *SecurityInfoWatch.com*..... Geoff Kohl

#### Sales Contacts

Southeast/Midwest Sales, *SD&I, STE, SIW.com*.....Jack Eller  
*jack.eller@cygnus.com*  
Northeast/European Sales, *SD&I, STE, SIW.com* ..... John Lacasale  
*john.lacasale@cygnus.com*  
Western U.S. Sales, *SD&I, STE, SIW.com* .....Bobbie Ferraro  
*bobbie.ferraro@cygnus.com*  
Sales, *Locksmith Ledger* ..... Ryan Olson  
*ryan.olson@cygnus.com*  
Classified Sales ..... Erica Finger  
*erica.finger@cygnus.com*

#### SecurityInfoWatch.com Contacts

Editor-in-Chief / Associate Publisher ..... Geoff Kohl  
*geoffrey.kohl@cygnus.com*  
Assistant Editor ..... Joel Griffin  
*joel.griffin@cygnus.com*  
Site Manager ..... Rob Hammond  
*rob.hammond@cygnus.com*

#### Other Contacts

List Rental ..... Elizabeth Jackson  
*ejackson@meritdirect.com*  
Content Licensing ..... Patrick Nadler  
*patrick.nadler@cygnus.com*

#### Subscriptions Customer Service

Toll-Free (877) 382-9187; Local (847) 559-7598  
Email: [Circ.SecTechExec@omeda.com](mailto:Circ.SecTechExec@omeda.com)

#### Reprints

To purchase article reprints please contact Foster Printing Services  
at 1-800-875-3251  
or e-mail [sales@fosterprinting.com](mailto:sales@fosterprinting.com)

#### Cygnus Business Media

CEO ..... John French  
CFO ..... Paul Bonaiuto  
EVP Public Safety & Security ..... Scott Bieda  
EVP Digital ..... Tom Kohn  
SVP Digital Revenues ..... Paul Caplan  
VP Group Marketing ..... Ed Nichols  
VP Manufacturing ..... Tom Martin  
VP Production Operation ..... Curt Pordes  
VP Audience Development ..... Julie Nachtigal  
VP Technology ..... Eric Kammerzelt  
VP Human Resources ..... Ed Wood  
Corporate Production Director ..... Brett Apold  
SVP Cygnus Expositions ..... Rob Brice



# ACCESS CONTROL & DOOR HARDWARE

## Standalone & Wireless Networked Access Control Solutions

Alarm Lock Systems is known to hospitals, schools, government, airports, firms and more as the leading provider of reliable, cost-saving standalone or wireless networked access control solutions for every application, door and opening.

Scalable, interoperable, dependable. Both physical security and IT-Department-friendly. Free Window-based software. Lowest maintenance costs.

Choose Trilogy® standalone locks or Networkx™ networked wireless models, all promise to be a robust access control alternative at a fraction of the cost of hardwired access, installed in about an hour.

The broadest line of advanced electronic locks, Alarm Lock has coded or HID® ID access locks in Grade 1 cylindrical or mortise styles, and special application models, such as: Dual-sided, narrow stile glass door, buttonless



vandal-proof, privacy & global lock-down locks, exit trim models, audit-trail keypads and a wireless keypad solution for use with strikes and mags.

Field-proven dependable, Alarm Lock is the right choice, especially when budgets and time are scarce and access needs are great. Contact your Alarm Lock Sales rep, call 1-800-ALA-LOCK or visit [www.alarmlock.com](http://www.alarmlock.com)

**Select eInquiry #504**



**ALARM LOCK**  
[www.alarmlock.com](http://www.alarmlock.com)

## Quantum Secure SAFE Suite

Traditional ways of managing physical access directly within physical access control systems (PACS) present considerable challenges. These include multiple PACS which are disparate and also not integrated with logical security systems, creating significant manual efforts regarding the management of identities and their related physical access. This complication increases because the enforcement of security policies is also manual, making it an inconsistent and error-prone process. Some of the resulting implications include the existence of duplicate identities, unauthorized access to identities, limited or no validation of prerequisites for access provisioning, no audit trail into access assignment, delay in or no removal of physical access for identities terminated in HR and other related challenges.

Quantum Secure is the leading provider of enterprise software to manage and streamline security identities, compliance and events across disparate physical security systems. Our SAFE suite of software



enables security practitioners to integrate disparate physical security systems, automate key processes and simplify control of employees, vendors and other third-party identities across a global organization. As a software solution, SAFE works with your existing security infrastructure — with no need to replace your existing hardware. By connecting physical security operations closely to their IT infrastructure, corporations can quickly lower operational costs, improve their compliance standing and lower their overall level of risk.

**Select eInquiry #505**

**QUANTUMSECURE**

[www.quantumsecure.com](http://www.quantumsecure.com)

## Trine Electric Strikes

Trine introduces the new 4850-PoE and 4850-LCD. The low current draw, no cutting to install, and flexible design combines to make this a versatile option for PoE and access control systems of any type.

Trine Access Technology designed the 4850-PoE and 4850-LCD to work within PoE environments, automatic door installations, or various Access Control Systems (such as Com, card readers/proximity, and keypads). These electric strikes help to eliminate the need for an additional power supply for the strike or to reduce its size for every day installations.

The 4850-PoE requires .260 mA (3.12 Watts) at 12DC, and the 4850-LCD require .135 mA (3.24 Watts) at 24DC, which meets the require-



ments for .300 mA systems or provides additional flexibility for .500mA and higher systems. The low current draw allows the use of smaller and less expensive power supplies when installing any access control system.

Just like Trine's standard 4850 electric strike, the 4850-PoE provides four-strike thicknesses (1/2", 5/8", 3/4" and 7/8") by supplying two spacer plates. The patented

6-pin anchoring system provides the highest level of strength and stability for any surface mounted strike — making this the strike for rim panic devices.

Save money on your power supply on every day installations — try a 4850-PoE or 4850-LCD today.

**Select eInquiry #506**

**TRINE**  
ACCESS TECHNOLOGY  
[www.trineonline.com](http://www.trineonline.com)

## SARGENT® Profile Series with Aperio™ Wireless Lock Technology

SARGENT® Profile Series locks with Aperio™ wireless technology allow facilities to expand their access control footprint and enhance overall security by protecting medium-security doors. Aperio utilizes local wireless communication between the lock and a communications hub to connect to an online electronic access control system, significantly reducing the cost and inconvenience of traditional access control.

Aperio is a global wireless platform from ASSA ABLOY that allows you to expand your access control footprint — quickly, easily, and affordably — using existing platforms you trust. Available across a range of locking hardware from ASSA ABLOY Group brands, Aperio provides the



flexibility to address a variety of applications throughout your facility.

The Profile Series combines integrated access control components with ANSI/BHMA Grade 1 hardware and is available in mortise lock, cylindrical lock and exit device configurations. It supports HID® 125 kHz proximity or 13.56 MHz iCLASS® con-

tactless credentials, with full authentication in all formats. The Aperio-enabled lock requires minimal field configuration and ensures quick, easy wireless deployments. Wireless communication (IEEE 802.15.4) between the lock and Aperio hub uses AES 128 encryption to ensure the highest level of security.

**Select eInquiry #507**

**SARGENT**  
**ASSA ABLOY**

[www.intelligentopenings.com/aperio](http://www.intelligentopenings.com/aperio)

Access control  
isn't one size fits  
all either.



Copyright © 2011 ASSA ABLOY Inc. All rights reserved.

From patented key systems to full-featured, online integrated locksets, ASSA ABLOY offers access control solutions tailored to the unique locking needs of each opening. With the industry's largest range of products, from the most trusted brands, your security dollars reach farther into your facility.

**ASSA ABLOY**

Contact your ASSA ABLOY Integrated Solutions Specialist for a consultation on your next project. Visit [www.intelligentopenings.com/SecurityContinuum](http://www.intelligentopenings.com/SecurityContinuum).



Using your mobile phone,  
scan this Microsoft® Tag.  
Download the free mobile  
app at <http://gettag.mobi>

ADAMS RITE | CORBIN RUSSWIN | HES | MEDECO | NORTON | SARGENT | SECURITRON | YALE

The global leader in  
door opening solutions

Visit [www.securityinfowatch.com/ste/einquiry](http://www.securityinfowatch.com/ste/einquiry) and select inquiry #351 for more information

# ACCESS CONTROL & DOOR HARDWARE

## Corbin Russwin® Access 800® W11 Intelligent WiFi Access Control

The Access 800 W11 is ideal for bringing access control to areas of a building that are cost-prohibitive or challenging to wire. It is a complete solution, integrating all components — including ANSI/BHMA Grade 1 Corbin Russwin hardware, card reader and door monitoring — into a single device. The Access 800 W11's open architecture design simplifies integration with any access control system, and because there are no wires to run, it significantly reduces installation and labor costs.

Using an existing IEEE 802.11 b/g WiFi network and HID® 125 kHz proximity or 13.56 iCLASS® credentials, the Access 800 W11 offers complete access control features.



Capabilities include real-time alarms and local decision-making to ensure operation regardless of network status. It also features advanced data security with standard encryption techniques to ensure the highest level of protection and is available with keypad for two-factor authentication.

The Access 800 W11 is offered in ANSI/BHMA Grade 1 cylindrical locks, mortise locks and exit devices with a variety of finishes and lever styles — standard, Muséo® and Vineyard™ — for a consistent design aesthetic throughout a facility. It uses standard AA batteries for easy, cost-effective deployment and maintenance.

Select enquiry #508

**Corbin  
Russwin**

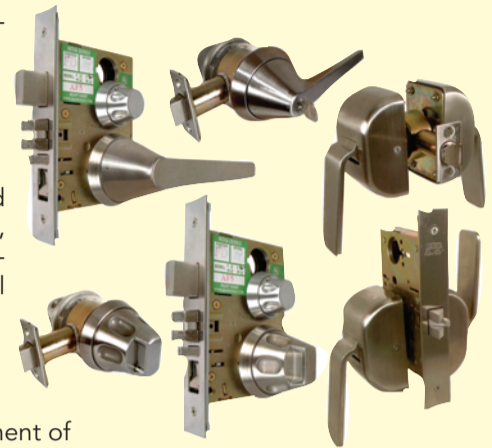
**ASSA ABLOY**

[www.intelligentopenings.com](http://www.intelligentopenings.com)

## Ligature Resistant Hardware, Hospital Push/Pulls, Mortise/Cylindrical Locksets

Marks USA offers a complete line of Ligature Resistant Hardware, Hospital Push/Pulls, Mortise and Cylindrical locksets. Their Grade 1 Institutional Life Safety locksets are designed to address managed liability, accident prevention, life safety and security in behavioral health care institutions.

The shape and construction of the SS55 and SS19 Series Locksets are designed to restrict the attachment of lines, laces, etc., to doorknobs. In addition, with the knobs recessed into the rosettes, the chance of capturing a line between the knob and rosette is substantially eliminated. The SS55 and SS19 Locksets are currently in use at Coney Island, Bellevue and Jacobi Hospitals in New York, the Denver V.A. Hospital in Colorado and Santa Clara Valley Medical Center in California, to name a few.



Marks USA was established in 1977 as a mortise lock manufacturing company that would meet the needs of an expanding market. Since then, the company has grown and expanded its product line to include residential, institutional and commercial locksets to meet and exceed the most stringent UL and ANSI specifications.

Select enquiry #509

**MARKS USA**

[www.marksusa.com](http://www.marksusa.com)

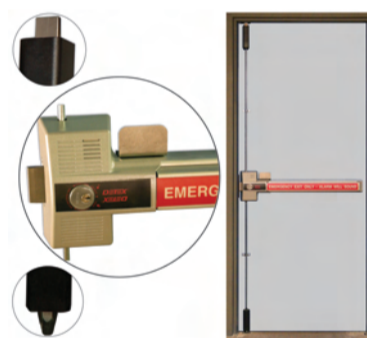


## SALTOGEO Cylinder

The new SALTOGEO (Global Electronic Opening) electronic cylinder lock is the latest addition to the SALTO stand-alone range of RFID locks. It has been specially designed and developed for use on doors where normal escutcheons cannot be fitted or are not permitted. Fully integrated with the SALTO XS4 platform, SALTOGEO is a versatile, cost-effective solution. Its compact size and ease of installation make it the ideal electronic locking system for almost any type of door. Whenever a cylinder is required with ANSI mortise locks, RIM locks or even with a padlock, the new Global Electronic Opening (SALTOGEO) is the answer. [www.saltosystems.com](http://www.saltosystems.com)  
Select enquiry #510

## Access Control Product Line

DoorKing Inc. is a leading manufacturer of innovative products for the access control industry. We manufacture a variety of IP addressable Telephone Entry and Multi-Door Card Access Systems, Telephone Intercom Systems, High Security MicroPLUS™ RF Transmitters and Receivers and Digital Keypads. Our vehicular access control products include slide and swing gate operators, parking control products, standard traffic control spikes and automated traffic control spike systems. For areas requiring a higher degree of perimeter control, such as airports, military installations, industrial sites, sea ports, infrastructure facilities (chemical, electrical, water treatment plants, etc.), security starts right at the front gate. DoorKing's Maximum Security vehicular gate operators are equipped with special features that help to ensure that the perimeter gate system is secured as quickly as possible. [www.doorking.com](http://www.doorking.com)  
Select enquiry #511



## Maximum Security Multi-Point Lock

The Detex ECL-230X-TDB is a maximum security, multi-point lock so big and strong that it stands up to assault by the bad guys. Its heavy-duty, three-bolt construction takes panic hardware to a whole new level of toughness and eases your back-door security worries. The 230X-TDB is designed with a larger deadbolt that goes deeper into the frame than other locks in the category. Connecting rods are solid steel, rather than the less reliable hollow rod/cable construction. Its low profile meets International Building Code requirement allowing for 4" maximum projection off the face of the door. Life safety and code compliant, the Detex 230X-TDB serves as both panic hardware and a maximum-strength locking device. [www.detex.com](http://www.detex.com)  
Select enquiry #512

## Wireless Access Control Product Line

Alarm Lock Systems Inc. is a respected leader in the design and manufacture of commercial door technologies for more than four decades, specializing in access and egress solutions for healthcare, education, government, airports, corporations and mixed-use environments. Its popular Trilogy® line enables security professionals securing buildings of all kinds to more cost-effectively and quickly add dependable coded or ID-carded wireless access control a door at a time, with a dependable field-proven access solution and a consistent model for every door type in a facility (cylindrical, mortise, narrow stile/glass, privacy or double-sided). Take a video tour at <http://bit.ly/vR1FHm> or contact 1-800-ALA-LOCK.

[www.alarmlock.com](http://www.alarmlock.com)  
Select enquiry #513





LKM7003 Shown with a Kaba Mas X-09

## LockOne LKM7000 Lock Series

Lockmasters' LockOne LKM7000 Lock Series is a revolutionary locking device that provides both high security and life safety. The single motion egress feature of the LKM7000 Lock Series when integrated with a high-security (FF-L-2740A) lock creates a FF-L-2890-compliant pedestrian door lock. The lock series currently offers five models, from exit only to tiered levels of security, which are compatible with high-security combination locks and a variety of access control devices. The lock series is ADA/UFSA compliant and Department of Defense approved. When used with a Kaba Mas X-09, it is UL Fire Rated for 90 minutes. Call Lockmasters at 800.654.0637 Monday thru Friday, 8:00 a.m. to 5:30 p.m. for more information, or visit [www.lockmasters.com](http://www.lockmasters.com) Select eInquiry #514

## EN Series Electric Strikes

The EN Series electric strikes from Trine are the only UL outdoor-rated strikes available on the market. The



EN400 centerline strike can be used in conjunction with a steel gate box (also available through Trine) to provide additional flexibility where the strike can be placed. The EN400-Gate-box can either be welded or screwed into position, allowing the EN400 electric strike to be installed on posts or gate frames that may not otherwise allow for an electric strike installation. The EN400 will work with any cylindrical locksets, mortise locks without deadbolts, and mortise exit devices. Don't let dust, rain, or snow get you down, try one today!

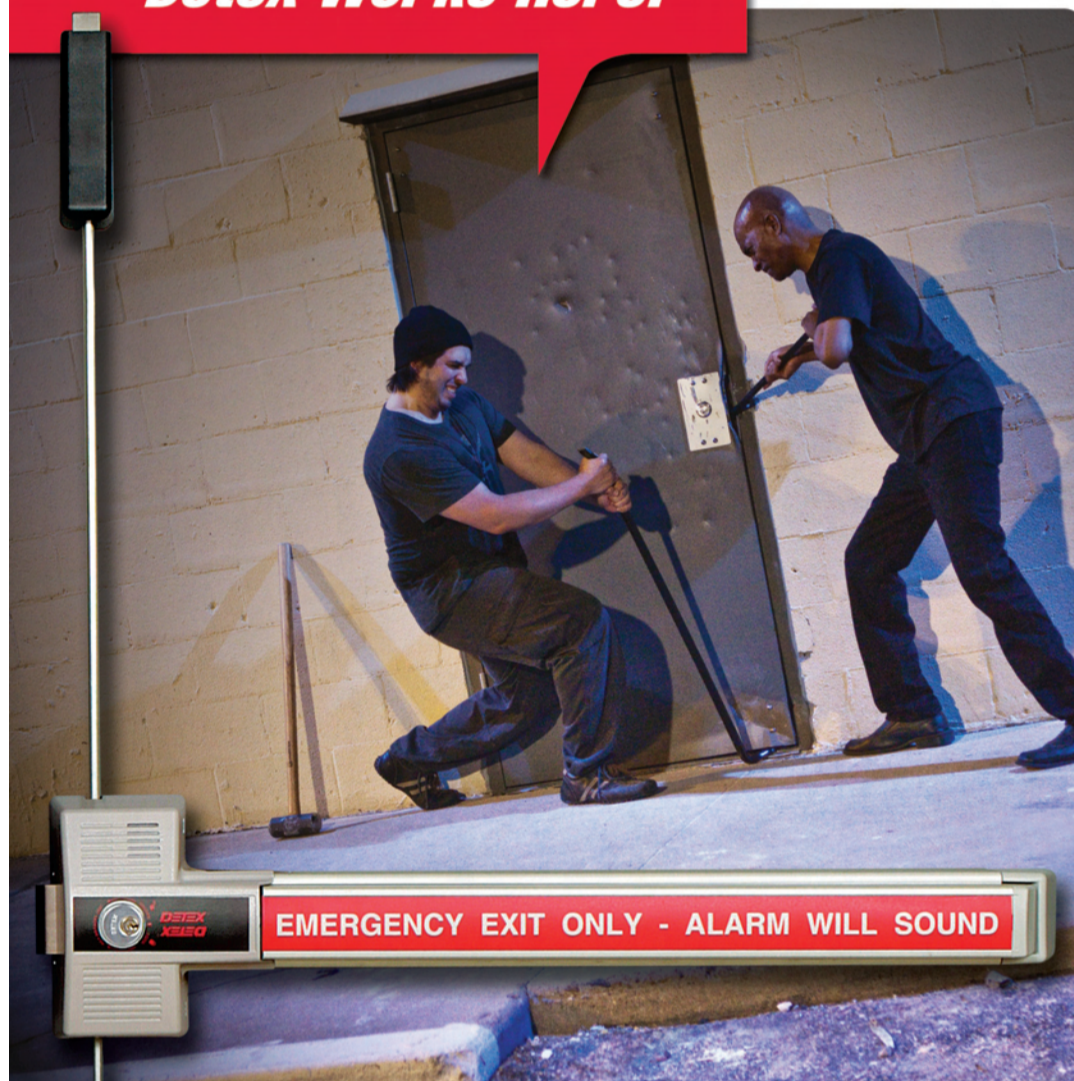
[www.trineonline.com](http://www.trineonline.com)  
Select eInquiry #515

## SARGENT® Incepta™ with Aperio™ Technology

With SARGENT Incepta™ Series locks, the security you need is finally in reach. Featuring Aperio™ wireless lock technology, Incepta Series locks make access control easy and affordable. As part of the Aperio family of wireless locks, Incepta offers easy expansion of existing access control systems to bring a new level of control to your facility. Available in mortise and cylindrical lock configurations, Incepta Series locks utilize HID® iCLASS® 13.56 MHz smart card technology. Aperio is a global wireless platform from ASSA ABLOY that allows you to expand your access control footprint — quickly, easily, and affordably — using existing platforms you trust. Available across a range of locking hardware from ASSA ABLOY Group brands, Aperio provides the flexibility to address a variety of applications throughout your facility. [www.intelligentopenings.com/incepta](http://www.intelligentopenings.com/incepta) Select eInquiry #516



## Detex Works Here.



## Our bad boy is stronger than these bad boys.

**A Detex exclusive, the 230X multi-point locking device raises the bar on back-door security.**

When the bad guys try to muscle in, the super-tough 230X keeps them out. Designed with extreme-duty, three-bolt construction, this device is built with a larger side bolt that goes deeper into the frame, plus solid steel connecting rods rather than less-reliable hollow rod/cable construction.

How tough is it? The bottom bolt goes 5/8-inch deep into the floor, preventing peeling up the bottom of the door. The largest side deadbolt in the category resists crowbaring. And at the top corner, the solid steel deadbolt provides needed stability. Testing proves that a 230X secured door withstands 10,000 pounds of pull force.

Life safety and code compliant, the 230X is both panic hardware and a maximum-strength locking device. Ask us how this powerful new hardware can take the hit for your business, or go to [detex.com/230X/](http://detex.com/230X/).



TOP BOLT



HEAVY DUTY DEADBOLT



BOTTOM BOLT



OPTIONAL HINGE SIDE LOCKING



OPTIONAL INSIDE PULL HANDLE



4" OFF DOOR



Where Trust is Built™

**DETEX**  
Life Safety and Security Door Hardware

800-729-3839 830-629-2900  
[www.detex.com](http://www.detex.com)

Visit [www.securityinfowatch.com/stc/einquiry](http://www.securityinfowatch.com/stc/einquiry) and select inquiry #352 for more information

# ACCESS CONTROL & DOOR HARDWARE

## SARGENT® Profile Series IP-Enabled Access Control Solutions

The SARGENT Profile Series v.S1 (PoE) and v.S2 (WiFi) IP-Enabled Locks take advantage of existing network infrastructure to provide advanced security and easier, more cost-effective installations. Available in exit device, mortise and cylindrical lock configurations, they offer reliable communication, advanced management capabilities, and real-time alarm notification.



door hardware. It uses IEEE 802.3af Power over Ethernet (PoE)-enabled network infrastructure for both power and data and provides the same real-time communication as traditional access control. Non-proprietary cable, PoE switches, and mid-spans facilitate cost-effective installations.

The Profile Series v.S1 and v.S2 locks feature ANSI/BHMA Grade 1 hardware and are available with HID® 125 kHz proximity or 13.56 MHz iCLASS® technology, and optional keypad.

The Profile Series v.S2 intelligent WiFi locks offer the ability to extend the reach of your access control systems using a building's existing 802.11b/g WiFi infrastructure. The v.S2 offers complete access control functionality and is ideal for locations where it would be difficult or cost-prohibitive to install a wired lock.

Select eInquiry #517

**SARGENT®**

**ASSA ABLOY**

[www.intelligentopenings.com](http://www.intelligentopenings.com)

## SELECT Hinges™ Geared Continuous Hinges

Do your customers complain about a “problem door?” Chances are, the problem isn't the door. Or even the lock. Fix the real problem — worn out butt and pivot hinges — and deliver total door service with SELECT geared continuous hinges. A SELECT geared continuous hinge surpassed 25,000,000 open/close cycles in laboratory testing — equivalent to 50 years of high-traffic use and 10 times beyond BHMA Grade 1 cycle count. That's why we can offer the industry's only Continuous Warranty™, a warranty that never expires. SELECT hinges eliminate hinge repairs forever and are ideal for high-traffic doors in retail storefronts, schools, convention centers, sports facilities, airports and other public buildings.

Call 800-423-1174 or visit [www.select-hinges.com](http://www.select-hinges.com).  
Select eInquiry #518



## Delayed Egress with Latch Retraction

Delayed Egress with Latch Retraction (EExER) is designed for applications where both delayed egress and remote unlocking, remote dogging, access control or an automatic door operator is desired. An optional EX Request to Exit Switch may be added for push pad monitoring or LX Switch for latch bolt monitoring. The 100 dB alarm, will sound when someone attempts to exit but the door will remain locked for 15 seconds, deterring unauthorized exits and providing time to respond to the alarm. Ideal for restricted areas, access controlled doors, and any door requiring authorized entry or exit, while preventing unauthorized entry or exit. Perfect for fire-rated, cross corridor, access controlled, delayed egress doors with automatic operators, all without using magnetic locks or electric strikes.

[www.detex.com](http://www.detex.com)  
Select eInquiry #519



## Corbin Russwin® HP3000 with Push/Pull Paddle Trim

The HP3000 tubular Lock with push/pull paddle trim provides an aesthetically pleasing alternative to products with standard push/pull trim. Its heavy-duty design and ANSI/BHMA Grade 1 strength help it to withstand abuse from rigorous environments. With multiple mounting orientations, hands-free operation and a sleek, aesthetic form, the HP3000 is flexible, easy to use and ideal for use in healthcare and educational facilities. [corbinrusswin.com/pages/HP3000.html](http://corbinrusswin.com/pages/HP3000.html)  
Select eInquiry #520

## Mobile Monitoring Application

With its latest OnGuard Mobile Monitoring application, Lenel Systems International Inc. announces support for the Android, Windows 7, iPad, iPhone smartphones and other wireless devices. Previously available only on BlackBerry smartphones, the application meets today's growing business demands for additional choices in mobile equipment for monitoring corporate and government facilities. “When guards and security personnel cannot be present at a central monitoring station, mobile monitoring alerts security to real-time activities throughout the entire location,” says Shaun Kelsey, Custom Solutions Manager for Lenel. While patrolling, guards can review and receive alarms, as well as run reports against user transactions logged by the mobile devices. Lenel is a business unit of UTC Fire & Security, a unit of United Technologies Corp.

[www.lenel.com](http://www.lenel.com)  
Select eInquiry #521



## Card Personalization Software

HID Global has released its Asure ID Software Development Kit (SDK) that enables more powerful card personalization software for FARGO and other major desktop card ID printers. Asure ID SDK is a set of modules and tools for third-party developers to incorporate the card personalization features into their own credential management systems. The SDK enables developers to streamline the entire card personalization process by fully integrating technology card programming and card design templates into credential management systems, allowing end-users to leverage one software interface to design, encode and print ID cards.

[www.hidglobal.com](http://www.hidglobal.com)  
Select eInquiry #522

## Two-Door PoE Access Starter Kit

Paxton Access has released its Two-Door PoE Access Starter Kit. Designed to provide an initial access control backbone for a site or facility, the kit is a simple way to quote, order and install basic elements of the first two doors of an access control system based on Power over Ethernet technology (PoE). Each kit includes the necessary electronics for two doors, 20 users, software administration and proximity access readers. Simply add the mid-span injector and door locking hardware (available through your distributor) for a simple, cost-effective and complete turnkey security solution. The starter kit includes a five-year warranty and immediate availability from distribution partners.

[www.paxton-access.com](http://www.paxton-access.com)  
Select eInquiry #523





## Marks USA M9900 Series Exit Device

Marks USA's M9900 series exit device provides extreme durability for high-impact applications such as schools, universities and other institutional or commercial buildings. The heavy-duty cast chassis provides superior durability, while the smooth reduced projection touchbar assembly minimizes catch hazards. The partial length touchpad permits options such as dogging. A full complement of free wheeling lever trim is available. Marks USA was established in 1977 as a mortise lock manufacturing company that would meet the needs of an expanding market. Since then, the company has grown and expanded its' product line to include residential, institutional and commercial locksets to meet and exceed the most stringent UL and ANSI specifications.

www.marksusa.com  
Select Inquiry #524



## SARGENT® Harmony Series Online Integrated Wiegand Access Control Solution

The SARGENT Harmony Series offers big features in a small, well-styled lock that is in tune with the aesthetic needs of the architect, and provides high security and ease of installation for the facility or security manager. Featuring ANSI/BHMA Grade 1 hardware, the Harmony Series consolidates all standard access control components into the lock. This dramatically reduces installation time and ensures a clean, streamlined appearance, maintaining the architectural integrity around the door. Available in cylindrical lock, mortise lock and exit device configurations, the Harmony Series supports HID® 125 kHz prox or 13.56 MHz iCLASS® credentials and offers full monitoring capabilities and an open architecture platform. Designed to blend into any environment flawlessly, the series is available with SARGENT Studio Collection decorative levers and 13 finishes.

www.sargentlock.com  
Select Inquiry #525



## PoE Single-Door Controller

Honeywell's Pro-Watch security management system features a new Power-over-Ethernet (PoE) single-door controller, with which organizations can add one door at a time to an existing Pro-Watch system. The single-door controllers simplify access control system scalability by allowing users to connect up to 16 PoE reader modules, one door at a time. Other Pro-Watch 3.81 software up-

grades include: Software-based license keys; inclusion of the S-Net protocol to provide a smooth migration path from legacy Star I controllers to current technology; and virtualization support with VMware and Microsoft Hyper-V, which enables an organization's IT staff to host Pro-Watch as a virtual server. www.honeywell.com/security  
Select Inquiry #526



## Enterprise Access Control

C•CURE 9000 Enterprise (version 2.01) from Software House, part of Tyco Security Products, provides a distributed architecture for enterprise scalability ideal for global, multi-location organizations as well as entities with a handful of locally dispersed locations. The software gives central control over the entire system for centralized configuration and monitoring, while each local facility maintains independent control of its individual operation. System administrators at the main facility can configure and monitor all locations from that central site. Each local server may be positioned near its relevant field hardware, which limits traffic to the main server and optimizes performance.

www.swhouse.com  
Select Inquiry #527



## Concealed Electric Strike for Mortise Locksets



The HES 8500 series is the first concealed electric strike solution for mortise locksets. This revolutionary electric strike works with 3/4" mortise locksets in either metal or wood frame installations. Designed for a fast, convenient, and beautiful installation, the 8500 maintains the standard ANSI prep with no cutting into the face of the frame. The HES 8500 is ANSI/BHMA Grade 1, UL 10C 3-hr fire rated, and UL 1034 burglary resistant listed. Optional features include: four faceplate options, three dead-latch platforms, Latchbolt Monitor (LBM), and Latchbolt Strike Monitor (LBSM).

www.hesinnovations.com  
Select Inquiry #528



The real reason your door drags.

## Your problem door isn't a door problem.

Your sticking door probably isn't the door's fault. Butt and pivot hinges wear out quickly on high-traffic entrances. Stress focused on only two or three hinge points eventually deforms the hinges, making your door hard to close and compromising security.

**A SELECT geared continuous hinge fixes your "problem door" for good.**

A SELECT geared continuous hinge distributes stress along the door length, giving it durability proven by more than 25 million open/close cycles in independent testing. That's why we can offer the industry's only Continuous Warranty™ covering any failure of our aluminum geared continuous hinges — with no expiration date.



**SELECT HINGES™**

SELECT Products Limited

800-423-1174

select-hinges.com/sbb



Visit [www.securityinfowatch.com/st/e/inquiry](http://www.securityinfowatch.com/st/e/inquiry) and select inquiry #353 for more information

# ACCESS CONTROL & DOOR HARDWARE

## Corbin Russwin® Access 700® Intelligent Campus Access Control



Designed specifically for campus environments, Corbin Russwin Access 700® locks provide a “one card” solution, supporting magnetic stripe, PIN code and HID® 13.56 MHz iCLASS® credentials. Available in WiFi and PoE versions, they use ASSA ABLOY’s PERSONA Campus™ software or approved third-party software to integrate seamlessly into existing enterprise, transactional, and housing systems, providing comprehensive, reliable access control. Access 700 locks use WiFi or PoE network infrastructure to connect to the access control system, offering advanced security and easier, more cost-effective installations. The Access 700 PW11 intelligent WiFi lockset is ideal for areas that

are too difficult or costly to wire. The Access 700 PIP1 intelligent Power over Ethernet (PoE) lockset uses network cabling for both power and data and offers full online access control.

[www.intelligentopenings.com](http://www.intelligentopenings.com)

Select eInquiry #529

## Access Control Solutions

Many Options From the Company of Choice for More than 60 Years

From single family residential to full size commercial and maximum security – swing and slide gate operators, doors, parking and access control – get it all from the manufacturer that’s been at it for more than 60 years.

One company that offers the complete access control solution, from planning assistance, to manufacturing, service, and support – since 1948, one company – DoorKing.

Contact us today and let us show you how DKS can simplify your life.

[www.doorking.com](http://www.doorking.com)

Parking Control Access Control Access Plus Telephone Entry Gate Operators Software

Member: AFA, DASMA, IDA, NNA, NOMMA, NPA, SIA, SSA

120 Glasgow Avenue, Inglewood, CA 90301 U.S.A.  
T: 310-645-0023 F: 310-641-1586  
E-mail: [info@doorking.com](mailto:info@doorking.com) [www.doorking.com](http://www.doorking.com)  
For information and where to buy: 1-800-673-3299

Visit [www.securityinfowatch.com/ste/inquiry](http://www.securityinfowatch.com/ste/inquiry) and select eInquiry #354 for more information

## Datacard® SD360™ Two-Sided Card Printer



with the help of logical soft-touch controls, all from the convenience of your desk. Competitive price and features make the SD360 printer one great value. Learn more at [www.Datacard.com/id](http://www.Datacard.com/id).

Datacard Group is building on a 40-year heritage of innovation and customer success. Our portfolio of solutions,

backed by expert service and support, enable card and secure ID programs for financial, government and other markets worldwide. With an unmatched commitment to customer satisfaction, Datacard remains the industry’s leading brand of secure ID and card personalization solutions.

Introducing the newest member of the SD Series: the Datacard® SD360™ two-sided card printer. Built with TruePick™ anti-jam card handling and engineered for Earth-friendly performance, the ENERGY STAR® qualified SD360 card printer meets your needs without ruining your budget. Print vibrant images at superior speeds

Select eInquiry #530

## Datacard Group

[www.datacard.com](http://www.datacard.com)

## Wireless Gate Kit

Ingersoll Rand Security Technologies’ Schlage AD-Series GCK400 Wireless Gate Kit leverages existing access control systems to gate entrances while saving thousands of dollars per gate in trenching costs. Because of the expenses in digging trenches and laying cable to their perimeter gates, many companies are not able to use their access cards for parking lots or are forced to use a standalone system at the gates, inhibiting real-time access control throughout the facility and grounds. The kit works in tandem with any access control system to provide up to 4,000 feet of clear line-of-site access control, eliminating the problems and costs of digging trenches to lay cable.



[www.securitytechnologies.ingersollrand.com](http://www.securitytechnologies.ingersollrand.com)

Select eInquiry #531

## Biometric Access Control Terminals



Morpho, part of the Safran group, has introduced the MorphoAccess VP Series physical access control terminals, which integrate finger vein and fingerprint biometrics. Suitable for authentication or identification, the terminals bring the benefits of finger vein/fingerprint multimodality to physical access control systems. The terminals are

PoE (Power over Ethernet) and Wi-Fi capable and have received FBI PIV-IQS and IP 65 certifications. The units are well suited to individuals who experience difficulties with mono-modal devices while offering the same simplicity and ease of use as for fingerprints alone. Can hold from 5,000 users (standard version) to 10,000 users (with license).

[www.morpho.com](http://www.morpho.com)

Select eInquiry #532

## Locking Ladder Pull



Dorma's new Locking Ladder Pulls bring elegance and security to entrance systems. They incorporate a pair of tubular lockable pull handles with thumb turns made from the highest-quality Grade 316L stainless steel. The effect is contemporary and visually clean, while sacrificing nothing in locking security. Four standard lengths are available: 49", 60", 72" and 84". Custom sizes are also available. The lockable pull handles feature a patented anti-break-in technology and steel deadbolt locking on

the reverse side of the key insertion. This technology conceals the cylinder-fixing screws.

[www.dorma-usa.com](http://www.dorma-usa.com)  
Select eInquiry #533

## Logic Electronic Cylinder Platform

Medeco Security Locks has introduced M<sup>3</sup> Logic, a Logic electronic cylinder platform that enables users to use just one key to control electronic cylinders within the same system as mechanical cylinders. The system allows for uncomplicated, rapid system changes. Features of the electronic cylinder include audit trails, scheduling, and the ability to efficiently add or delete users. The units require no wiring, door or frame modifications, or additional hardware since they are simply cylinder replacements. Ideal for both internal and external installation, the cylinders can be retrofitted into existing hardware in less than five minutes, nearly eliminating installation expense. The compact M<sup>3</sup> Logic key is patent-protected against duplication, holds up to 1,000 audit events, features multiple time schedules, and incorporates both visible and audible status feedback. Variations of the M<sup>3</sup> Logic platform include Bi-axial Logic and Original Logic, which are compatible with older Medeco mechanical technology.

[www.medeco.com](http://www.medeco.com)  
Select eInquiry #534



## SARGENT Passport 1000 Campus Access Control Solution

Designed specifically for campus environments, the Passport 1000 Series provides a "one card" solution, using magnetic stripe, PIN code, and proximity or iCLASS® card reader technologies for customized access to facilities. Available in WiFi and PoE versions, these products use ASSA ABLOY's PERSONA Campus™ software or approved third-party software to integrate seamlessly into existing enterprise, transactional, and housing systems, providing comprehensive, reliable access control. The Passport 1000 locks take advantage of existing network infrastructure to provide advanced security and easier, more cost-effective installations. The Passport 1000 P1 Power over Ethernet (PoE) and P2 WiFi locks feature ANSI/BHMA Grade 1 hardware and are available in exit device, mortise and cylindrical lock configurations. [www.intelligentopenings.com](http://www.intelligentopenings.com)

Select eInquiry #535



A member of ONVIF and PSIA, Lenel proudly supports open-architecture design and open standards.



More than 100 manufacturers are members of the Lenel OpenAccess Alliance Program (OAAP), and have developed interfaces to Lenel's industry-leading OnGuard security platform. None of our competitors have partner programs of that scale. OAAP keeps your product selection decisions open, allowing you to select hardware and software solutions that best fit your needs.

A lot of suppliers in the security business talk a good game about how their hardware or software is "open" but few can pass the litmus test for being truly open.

Lenel first introduced an open systems architecture to a proprietary security industry in 1995. Since then, Lenel has become the gold standard for leading-edge technology and flexible open systems design.

The world is changing and security needs to evolve. Lenel's non-proprietary, open standard approach provides you with hardware and system independence so you can select the best-fit security solution for your current and future needs.

At Lenel, we provide you with the power of choice.

- ☑ 92 of the Fortune 100 are Lenel customers
- ☑ 20,000+ installations worldwide
- ☑ 90+ countries
- ☑ 100+ OpenAccess Alliance Program partners
- ☑ Installed at world's most secure airports & ports
- ☑ 3x increase in R&D spending in 2011 - driving "Perpetual Innovation"
- ☑ Part of UTC, a diversified \$54 billion global company

Find out more at [lenel.com/OPEN](http://lenel.com/OPEN)

PERPETUAL INNOVATION™  **Lenel**  
A UTC Fire & Security Company

Visit [www.securityinfowatch.com/st/einquiry](http://www.securityinfowatch.com/st/einquiry) and select eInquiry #355 for more information

# ALARMS, INTRUSION DETECTION & CENTRAL

## NAPCO Commercial Addressable Fire or Gemini Combo Burg/Fire Systems

Napco Security Technologies Inc., recently introduced its Napco Commercial Platform™, a full line of Commercial Fire or Combo Intrusion/ Fire Systems configurable for wireless, hardwire, analog, addressable or conventional technology devices.

Meticulously engineered to plain do more, the NAPCO Commercial Platform includes built-in labor savings, incredible power, and feature-rich value that's easy to plan-out and standardize on for 255, 128 or 32 points of commercial wireless, analog addressable and/or 12V conventional installations; and it is fully compliant with the most rigorous industry standards, including UL864 9th Ed., NFPA72, SIA CP01 and more.

Knowing what a real-world installation requires, the system features more value-adds built in, all on-board: 7 Amps of power, 4 NACs (expandable), built-in, dual line DACT and strobe/horn synch module.

More handy features include easiest AHJ calcs: up to 32AH standby separate for burg and fire; and re-



note/onsite uploadable analog smoke sensitivity reporting. The line includes a full complement of peripherals and wireless, analog, addressable and conventional devices listed for use with it, plus NAC extenders and 24V & 12V Regulated Power Supplies backward compatible for all Gemini Control Panels. Ask for the NAPCO Commercial Platform at your Napco distributor. Free training certification classes and overviews are given both as webinars & in the field and earn security professionals up to 8 ceu credits. Go to [napcosecurity.com/training](http://napcosecurity.com/training) for more details.

Select enquiry #536



[www.napcosecurity.com](http://www.napcosecurity.com)

## Central Monitoring Services

At Security Central, we are confident that our ability to support your evolving needs can contribute to the success of your business. For more than 30 years, we've built our reputation as a leader in our industry by listening to our dealers and their customers. Those qualities have helped us grow into one of America's largest nationwide central stations while remaining family-owned and independent. Simply put, we care about being the very best for you. Get more information on what Security Central can offer your business. You can depend on security central to protect your customers — and your reputation.

- Wholesale Monitoring.
- All major wireless, IP and dialer formats.
- PERS and two-way voice.
- Video Monitoring.
- Answering Service.
- Billing and collections.
- Training Classes.
- Technical Support.
- Customer Literature Available.

[www.security-central.com](http://www.security-central.com)

Select enquiry #537



## WDE EasyKits

The WDE EasyKits from Detex provide a secure 2-point locking system with 15-second delay and 100dB alarm when someone attempts to exit. The WDE EasyKit is designed for outdoor applications and is perfect for garden center gates, amusement parks, sports arenas and any location exposed to weather or moisture where delayed exit is required.

Although ideal for retail in helping to prevent theft, in applications such as outdoor childcare and assisted living homes, WDE EasyKit can also be used to help protect those trying to exit. Use a standard WDE EasyKit such as WDEx-10EXx1S-1 or call to create your custom EasyKit, all EasyKits include best in class components and easy to follow wiring and riser illustrations.

[www.detex.com](http://www.detex.com)

Select enquiry #538



## Wireless Alarm System

Visonic Ltd.'s PowerMaster-30 wireless alarm system is designed to meet the security needs of large residential premises and mid-size businesses. The system enables security professionals and central stations to provide a wireless alarm system with reliability closer than ever to that of a wired system. The system's PowerG network uses Two-Way Low-Power Frequency Hopping Spread Spectrum (FHSS) technology to ensure that each transmission arrives uninterrupted at its destination. It successfully overcomes intentional and unintentional interferences, jamming and collisions, resulting in increased reliability of the wireless network even in "noisy" environments with dense radio energy.

[www.visonic.com](http://www.visonic.com)

Select enquiry #539

# TAKEX

## the art of protection...

For over 50 years TAKEX has provided active infrared detection devices for industrial, commercial and residential installation. In this time we have developed a patented combination of technologies to provide the most reliable point-to-point active infrared detection units available...



tel. 408-747-0100

email. [info@takex.com](mailto:info@takex.com)

web. [www.takex.com](http://www.takex.com)

Visit [www.securityinfowatch.com/st/einquiry](http://www.securityinfowatch.com/st/einquiry) and select enquiry #356 for more information

# STATIONS



## TAKEX Intelligent Quad Beams

TAKEX Intelligent Quad beams are the beams all others are measured by. The Intelligent series is the flagship of the TAKEEX range of infrared photoelectric beams. Intelligent series beams are synchronized to maintain range and stability in severe weather, while rejecting "nuisance-alarms" caused by birds, animals or blown litter. With 16 beam paths between the transmitter and receiver, TAKEEX beams ensure maximum stability in perimeter protection, covering external distances up to 200m. Available in stand-alone models (PB-IN-HF series) or the NEW TAKEEX PB-HF-KH models, which are designed specifically for use in our NEW TA Tower series. Supplied with "quick fix" mounting brackets for fast, trouble-free installation, the beam units locate in vertical slide-channels in the TA tower spine for easy and precise height adjustment. Optional heaters are available. [www.takeex.com](http://www.takeex.com)

Select elnquiry #542



## Microwave-Based Intrusion Detection

Senstar Corp.'s newest generation microwave,  $\mu$ ltraWave, is an all-digital volumetric sensor that provides advanced warning to security forces of unwanted intrusions. Key benefits of the sensor include ease of use, powerful networking capabilities and long-term reliability. The unit's sophisticated detection algorithms look for specific responses that discriminate real intrusions from environmental effects. It comes with a Windows-based software configuration tool with intuitive screens. Calibration is streamlined with minimal settings and sensor response data can be viewed and recorded in real-time to evaluate sensor Probability of detection (Pd) and Nuisance Alarm Rates (NAR). Highly stable RF sources allow for 10 operating channels, allowing even the densest concentration of microwaves.

[www.senstar.com](http://www.senstar.com)

Select elnquiry #540



## Distributed Wireless Alarm System

DSC, part of Tyco Security Products, has released IMPASSA, a next generation wireless alarm system designed to be a full-featured security solution offering a range of communications and installation options. The system's distributed wireless approach enables the control panel and wireless components to be installed wherever needed for optimal protection. Using high-quality speakers and microphone, it delivers two-way audio alarm communication with the central alarm monitoring station during alarm events. With built-in VOX only or VOX and push-to-talk, users can easily talk to operators via phone line. With only one wire needed for AC power, on-site installation time is greatly reduced.

[www.dsc.com](http://www.dsc.com)

Select elnquiry #541



# MONITORING every SITUATION

Nationwide, 24/7

At Security Central, we are confident that our ability to support your evolving needs can contribute to the success of your business. For more than 30 years, we've built our reputation as a leader in our industry by listening to our dealers and their customers. Those qualities have helped us grow into one of America's largest nationwide central stations while remaining family-owned and independent. Simply put, we care about being the very best for you. Get more information on what Security Central can offer your business.

You can depend on Security Central to protect your customers *— and your reputation.*

- ◆ Wholesale monitoring
- ◆ All major wireless, IP and dialer formats
- ◆ PERS and two-way voice
- ◆ Video monitoring
- ◆ Answering services
- ◆ Billing and collections
- ◆ Training classes
- ◆ Technical support
- ◆ Literature available

For more information, go to [www.Security-Central.com](http://www.Security-Central.com) or call (800) 438-4171.



SECURITY CENTRAL

Quality Care. Quality Protection.



SECURITY CENTRAL IS A FAMILY-OWNED BUSINESS.  
Courtney Brown and Ellen Brown Meihaus.

Visit [www.securityinfowatch.com/stel/enquiry](http://www.securityinfowatch.com/stel/enquiry) and select enquiry #357 for more information



## Carbon Monoxide/Smoke Detection

Notifier by Honeywell introduces the IntelliQuad PLUS detector, offering carbon monoxide (CO) detection together with smoke detection and nuisance alarm rejection as part of an ONYX Series fire alarm system. One unit combines four sensing elements for smoke, CO, light/flame and heat to quickly verify a true fire or CO emergency. Separate signals for CO and smoke allow for ONYX systems to respond appropriately based on the event type. Combined with the addressable B200S sounder base, the unit serves as an all-in-one detection and notification unit. [www.notifier.com](http://www.notifier.com)

Select enquiry #543



## Fire Alarm System

The Simplex 4100ES (eServices) Fire Alarm System from SimplexGrinnell, a Tyco International company, is a next-generation, Internet-ready life-safety platform featuring advanced technology that can improve serviceability and operational efficiency while reducing costs over the life of the system. The system provides added processing power, simpler installation and ground-breaking serviceability features that include remote service diagnostics, remote program downloads over a customer's IT network, and mass storage of vital system data within the panel. Key capabilities include: TrueInsight Remote Service; easy install mode; remote download; a mass storage device; and forward/backward compatibility.

[www.simplexgrinnell.com](http://www.simplexgrinnell.com)  
Select enquiry #544

## "Green" Extinguisher

Utilizing 3M Novec Fire Protection Fluid, the Sinorix 1230 from Siemens Industry Inc., is a green solution based on sustainable technology. With a Global Warming Potential of 1 (the lowest for any chemical agent) and zero ozone depletion, the unit provides U.S. Green Building Council LEED-EB certification credits. Safe and effective, Sinorix 1230 contains a non-toxic, non-flammable and non-conductive solution that requires no cleanup after discharge. Designed to interrupt combustion process at its earliest stages, the agent suppresses fire before there is enough heat to damage adjacent equipment or ignite other potentially combustible materials.

[www.usa.siemens.com](http://www.usa.siemens.com)  
Select enquiry #545



Scan me with your smartphone  
QR app required.



# Coming Soon!

www.lockmasters.com

**LOCKMASTERS**  
INCORPORATED

We are excited to be unveiling a new website over the next few months and apologize for any inconvenience this may cause you. We hope you will find the new site more user friendly and informative. We appreciate your patience during the construction phase.

Feel free to call Customer Service, 800.654.0637 Monday - Friday 8:00 am to 5:30 pm EST for assistance.

Visit [www.securityinfowatch.com/ste/enquiry](http://www.securityinfowatch.com/ste/enquiry) and select enquiry #358 for more information

# Buy 1 Burg. System, Get 1 Fire System FREE (inside):



More analog, commercial wireless and conventional input and output device types than any brand (just a few shown).

## Gemini 24V Fire/Burg "Combo." Panel The 1st AHJ-Friendly, Analog Addressable in its Class.

**2 Systems in 1:** More cost-effective, so you're more competitive, armed with a single all-in-one fire/burg combo. system, engineered to give you the same NFPA 72 & UL 9th ed. code-compliance & circuit-isolation that used to only be possible installing 2 separate burg and fire panels.

- ✓ The only integrated 24 Volt combo. system that works like two separate burg and fire panel installations in one, with independent pre-isolated circuits and power reserves
- ✓ 32 to 255 points of analog, addressable, commercial wireless and/or conventional 12V devices
- ✓ More value, out-of-the-box-ready guaranteed
- ✓ More on-board power, 7A
- ✓ 4 NAC circuits onboard, expandable to 24
- ✓ Built-in Horn Strobe Synchronization
- ✓ Built in Dual line Phone Module and TCP/IP option
- ✓ More standby power in the can (32AH@24V)
- ✓ Printable AHJ reports of analog device sensitivity settings with current readings (uploadable)

**For more GEMC-Series info. call today 1-800-645-9445 and/or register for the Certification Class near you**

<http://napcosecurity.com/training>



[www.napcosecurity.com](http://www.napcosecurity.com)

# VIDEO SURVEILLANCE

## Avigilon Control Center Core

Avigilon is addressing the security needs of small businesses with the newest edition of its Avigilon Control Center Core software. This entry-level version of the already award-winning network video management software delivers advanced high-definition surveillance capabilities, ease of use and superior image quality to small businesses. Many small businesses — such as retailers, convenience stores and small office buildings — face security concerns similar to those of larger companies, but they are constrained by smaller budgets and a lack of dedicated security staff. As a result, small businesses are increasingly looking for affordable, easy-to-use HD surveillance systems. Leveraging Avigilon's High-Definition Stream Management (HDSM) technology to achieve the best possible image



quality while using less bandwidth and less powerful workstations for lower costs, Avigilon Control Center Core delivers the following features and benefits:

- A complete system for reviewing live and recorded HD images;
  - Accommodates conventional and PTZ analog cameras, as well as a broad range of third-party IP cameras and encoders, enabling a budget-conscious migration to HD;
  - Simple and intuitive user interface for full control over surveillance video playback to quickly retrieve evidence; and
  - Robust searching enables quick and accurate navigation of large amounts of recorded HD video with camera-specific event logs.
- Now, small businesses can customize an effective security solution that works for them.

Select eInquiry #546

**AVIGILON**  
THE BEST EVIDENCE™

[www.avigilon.com](http://www.avigilon.com)

## IQinVision H.264 Alliance-pro

The Alliance-pro is a full featured, multi-megapixel H.264 Main Profile vandal dome camera. With support for up to 5 MP resolutions, this camera provides multiple, individually configured H.264 and simultaneous MJPEG streams, delivering the highest quality megapixel video while maintaining efficient network bandwidth. Designed with the installer in mind, installation and maintenance is easy thanks to the intuitive design, a hinged pivoting shroud, EZglide lens focus and 3-axis gimbal. Part of the Alliance family of indoor and outdoor dome cameras, Alliance-pro is perfect for installations at schools (K-12, university), campuses, municipalities, government, retail, enterprise, healthcare and SMB. Both ONVIF- and PSIA-compliant, the Alliance-pro can be installed virtually anywhere and works seamlessly with the leading NVR/VMS providers. Includes 'bumper-to-bumper' 3-year warranty.



[www.iqeye.com](http://www.iqeye.com)

Select eInquiry #547



## Ultra Wide, Undistorted 5mpx Varifocal Lens

Theia Technologies has extended its family of unique, distortion-corrected megapixel lenses with its new SL183, providing:

- 115° to 77° HFOV with 1.8 - 3mm varifocal range;
- No barrel distortion with Theia's patented Linear Optical Technology®;
- Full 5 megapixel resolution;
- IR correction for Day/Night cameras;
- Compact size — at 49.5mm fits in most mini-domes;
- CS-mount for 1/3", 1/2.7" HD, 1/2.5", and 1/2" imagers; and
- Manual and DC auto-iris versions

Theia's family of ultra wide lenses uses patented technology to provide an ultra wide field of view while correcting barrel distortion optically without software. The ultra wide field of view enables coverage of a wide area with fewer cameras. Visit [www.theiatech.com/families.php?family=ultrawide](http://www.theiatech.com/families.php?family=ultrawide) to learn more.

Select eInquiry #548

fiber optic  
wireless  
network  
digital video broadcast

Transmission products built to perform  
in non-conditioned environments



**KBC**  
data delivered

Whether your system is IP,  
analog or high definition  
**we get data  
delivered**



### Ethernet switches

industrially hardened  
PoE  
managed/unmanaged

### WESII wireless

802.11a/n  
MIMO technology  
greater throughput



find out more about our latest product ranges  
[www.kbcnetworks.com](http://www.kbcnetworks.com)



## ONVIF-Comformant Mini-Dome Line

IndigoVision has broadened its camera range with the launch of 1080p, 2-megapixel, ONVIF-conformant HD cameras in four variants. The camera range allows the most appropriate size and design to be chosen for the client. These include an internal Mini-dome, a vandal-resistant Mini-dome, and two Micro-domes — internal or external — for smaller spaces where a more discreet camera is needed. The Mini-dome family is perfect for a multicast environment, allowing an unlimited number of users to view live video on the network with reduced network bandwidth. Dual H.264 encoding allows users the flexibility of simultaneously streaming at different resolutions and frame rate, especially useful when streaming remotely as well as locally.

[www.indigovision.com](http://www.indigovision.com)

Select eInquiry #549

Visit [www.securityinfowatch.com/ste/einquiry](http://www.securityinfowatch.com/ste/einquiry) and select eInquiry #360 for more information



## EtherStretch

EtherStretch can quickly turn any ordinary telecommunications cable (coax or UTP) into a high-speed network communication and PoE path. When operating over coaxial cable (RG59), distances of up to 500 meters (1640 feet) can be achieved. The UTP version uses a four-pair UTP cable to communicate up to 600 meters. The EtherStretch system consists of a transmitter and a receiver set, which requires very little installation time and absolutely no set up or configuration. The transmitter and receiver are transparent to the network and have no IP or MAC addressing. Simply connect your network devices to the network ports of the transmitter and receiver along with existing cabling, and the system begins communicating.

[www.nitek.net](http://www.nitek.net)

Select Inquiry #550

# EtherStretch™



## Outdoor Wireless Ethernet System

KBC Networks' WESII is an environmentally-hardened, outdoor-rated Wireless Ethernet System. It operates in the license-free 5GHz band, features MIMO technology, is 802.11a/n compliant and boasts a useable throughput of up to 100Mbps. WESII utilizes a secure encryption method that prevents unauthorized access to the system and data being transmitted. Ethernet connectivity is provided for a wide range of IP devices including megapixel and HD cameras, DVRs, encoders/decoders and web servers. WESII is the ideal transmission solution when running a cable is simply not cost-effective or possible. Systems are available in a variety of point-to-point and point-to-multipoint configurations.

[www.kbcnetworks.com](http://www.kbcnetworks.com)

Select Inquiry #551



## ONVIF-Conformant Fixed Megapixel Camera

Adding to its line of 1.3-Megapixel IP security cameras, Canon U.S.A. Inc., has introduced the VB-M700F fixed IP camera, providing built-in video analytics, conformance to the ONVIF (Open Network Video Interface Forum) interoperability standard and many other advanced features. The camera is able to capture high-resolution picture detail and color in a wide variety of lighting conditions. Equipped with a Canon 3x Optical zoom lens with a focal length of 2.8 to 8.4mm and 102.5 degree wide-angle of view, the camera's 1.3-Megapixel CMOS sensor and proprietary Canon DIGIC NET image processor enables capture of potentially crucial image detail in low-illumination environments down to 0.018 lux at f/1.2 and 1/8 sec. in color and 0.001 lux at f/1.2 and 1/8 sec. in black-and-white.

[www.usa.canon.com](http://www.usa.canon.com)

Select Inquiry #552



## Digital Video Recorder Line

Toshiba Surveillance & IP Video has introduced its G5 Series of digital video recorders, doubling the performance of previous generation recorders. The DVRs employ Intel Core i3, i5 and i7 processors. System memory has also been doubled, along with the incorporation of DVI and HDMI monitor output for dual monitor output to large panel displays, and eSATA and USB3.0 ports for external storage. eSATA has transfer speeds of 3.0Gbit/s and USB3.0 has speeds of 5Gbit/s, 10-times faster than USB 2.0 speeds of 480Mbit/s. The four models that comprise the G5 family are: the DVSe Hybrid Video Server; the NVSe IP Video Server; the XVSe Hybrid Video Server; and the IPSe IP Video Server.

[www.toshibasecurity.com](http://www.toshibasecurity.com)

Select Inquiry #553



## NVR Line

JVC Professional Products Company's new line of VR-X network video recorders, the VR-X1600U and VR-X3200U, offer 16- and 32-channel recording, respectively, as well as support for 720p and 1080p full HD resolutions with multi-codec support. Equipped with built-in camera licenses with no recurring fees, as well as the latest versions of Milestone XProtect Enterprise and Windows Embedded OS, the NVRs offer enterprise-level, full HD recording and viewing for an unlimited number of NVRs, cameras, sites and users. More than 1,000 different camera/encoder models can be supported by installing the latest Milestone device driver pack. A broad selection of software add-ons and third-party integrations, plus a fully documented SDK, are also available. Both NVRs ship with a pre-installed 1 TB drive. Three additional drives can be easily installed from the front panel for up to 4 TB of on-board storage.

<http://pro.jvc.com>

Select Inquiry #554

### SL183 5MP Day/Night undistorted

#### Ultra wide 1.8 - 3.0mm

115° wide...  
...to 80°

**Theia**  
TECHNOLOGIES  
[www.TheiaTech.com](http://www.TheiaTech.com)

Using Linear Optical Technology®  
ALL OPTICAL DISTORTION CORRECTION

Visit [www.securityinfowatch.com/st/e/inquiry](http://www.securityinfowatch.com/st/e/inquiry) and select inquiry #361 for more information

# VIDEO SURVEILLANCE

## PTZ Camera Line



Bosch Security Systems Inc. has introduced the next generation of its AutoDome Pan-Tilt-Zoom Camera family. The new AutoDome 600 Series analog cameras and the AutoDome 700 Series IP cameras provide end-users with high resolution imaging in a range of scene conditions, including well-lit, harshly lit or low-light environments. The cameras feature 360-degree high-speed continuous rotation and 28x or 36x optical zoom

to provide customers with an increased monitoring range. The 600 Series cameras offer built-in motion detection, advanced alarm control and the award-winning AutoTrack II. The 700 Series IP cameras come with embedded Intelligent Video Analysis (IVA) software already enabled. With this feature, the cameras process video signals and automatically alert operators to potential security risks. One AutoDome pan-tilt-zoom camera can analyze up to 10 different scenes for loitering, line crossing and other potential threats—providing customers with reliable detection, tracking, analysis and advanced search capabilities.

[www.boschsecurity.us](http://www.boschsecurity.us)  
Select eInquiry #555

## All-in-One Server/Storage Appliance



Intransa has introduced its all-in-one platform, the VA1020 Server/Storage Appliance, which leverages the power and cost effectiveness of IT hardware while optimizing for video surveillance, access control and analytic software choices. It is designed for organizations with small- to mid-sized camera installations and for both standalone and multiple site applications. Powered by the latest Intel CPUs, the unit provides the server power to support small- to medium-sized VMS projects. It includes choice of 10 or 20TB of raw video recording capacity with high-performance, high-density SATA-II storage, suitable for the majority of physical security needs.

[www.intransa.com](http://www.intransa.com)  
Select eInquiry #556

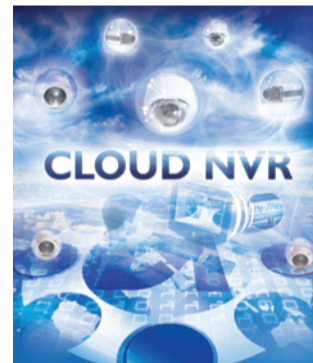
## High Definition Cameras



American Dynamics' new Illustra 600 Series HD IP cameras provide greater flexibility in a high-definition camera. Offering superior resolution and low-light performance to .02 lux and lower, the ONVIF-compliant cameras also excel at challenging camera views with a wide-angle lens, and facial enhancement of bit rate analytics for clear facial images with low bandwidth usage and storage costs. The outdoor mini-dome features a built-in heater ring to prevent condensation and features an IP67 rating for extreme environmental conditions. The cameras include three built-in mounting mechanisms, auto-focus and zoom and a compact form factor reduce the time and cost of installation. Megapixel video is provided using the latest sensors and lenses and integrated H.264 compression.

[www.americandynamics.net](http://www.americandynamics.net)  
Select eInquiry #557

## Cloud NVR



DM Network Video has introduced its "Cloud NVR" to provide differentiated IP video benefits to the end-user. The NVR provides a fail-safe, secure IP video camera architecture which is free of a single point of failure. The "Cloud" contains a hardened "Closed IPTV" management layer which protects the IP video system from intrusion, through the implementation of trusted end-points — essential in retail and banking applications or in fact any application where the corporate network is used as part of the security system. This fail-safe architecture is constructed around the CamVu ICR (Integrated Camera Recording) IP cameras which contain recording to both uSD storage and remote HDD storage simultaneously, combined with full enterprise server capability and analytics at the edge.


[www.dm-networkvideo.com](http://www.dm-networkvideo.com)  
Select eInquiry #558

## Network PTZ Dome Camera




Infinova's V1771N-M series 1.3 megapixel Network PTZ dome camera uses 1/3" high performance CCD, with the highest resolution reaching 1280x960. It provides MPEG-4 and M-JPEG dual video compression and triple stream encoding technology, which enables users to select proper code stream according to image quality and bandwidth requirements. With built-in 18X optical zoom and 12X digital zoom lens, it provides Day/Night modes and can work effectively in 24x7 surveillance environments. Powerful network management enables users to monitor the internal temperature, voltage and fan status at any time, which greatly enhances the stability of the dome. The built-in clock module helps to make scheduled settings such as calling presets at regular time and so on. It also features remote upgrade.

[www.infinova.com](http://www.infinova.com)  
Select eInquiry #559




## The Dome Camera Alliance


Where image quality, design excellence, and installer friendly features combine to make the worlds greatest H.264 dome line.




**Bumper-to-Bumper Warranty**  
IQinVision's 5-year warranty covers all moving parts, sensors, cut filters and fans. (5-year warranty on Alliance-mini, all other cameras 3-years)



**Value That's Better Than Ever**  
IQinVision is offering the highest quality cameras, with the best warranty in the industry, at the lowest prices you'll find.



**Want It Fast? Get it Fast!**  
IQinVision offers the industry's fastest shipping times. All in-stock order's ship within 72 hours.



[www.iqeye.com/STE11](http://www.iqeye.com/STE11)

Visit [www.securityinfowatch.com/st/einquiry](http://www.securityinfowatch.com/st/einquiry) and select inquiry #362 for more information

# EMERGENCY COMMUNICATIONS

## Talk-A-Phone's VOIP-500 Series Emergency Phone

Migrating emergency communications equipment to IP could've never been easier. Talk-A-Phone's VOIP-500 Series Emergency Phone can be connected directly into existing routers and LAN infrastructure to work on a standard IP PBX. The unit is a direct physical replacement of a Talk-A-Phone's ETP-400 Series Phone. Many custom faceplate sizes are available, allowing other manufacturer's phones to be easily upgraded to VOIP-500 Series. As an added benefit, VOIP-500 Series Emergency Phones can be paged at high volume with WEBS Contact® mass notification software, allowing emergency personnel to issue targeted alerts to any segment of a facility. The software automatically tests and verifies connectivity of VOIP-500 Series phones and sends email alerts on failure detection. Scan the QR code for more information or visit [www.talkaphone.com](http://www.talkaphone.com).

Select Inquiry #560



### Personal Emergency Response System

LifeSentry is the ultimate Personal Emergency Response System. As the world's smallest two-way voice communicator, one can push the button on the pendant from anywhere in and around their home and be talking to a central monitoring station operator in seconds. For years, such systems required one to shout across the house to speak to the central station operator. LifeSentry puts the speakerphone right in the pendant. Up to 600 feet of range. The Emergency Wall Communicator accessory is like PERS on steroids. Simply attach this device to the wall anywhere in your home — and you have full way voice communication to the central station of your choice. The water-proof unit can even be located right in the shower — where most accidents happen.

[www.LogicMarkSecurity.com](http://www.LogicMarkSecurity.com)  
Select Inquiry #561



<b>I WANT</b> EASY-LOADING SUPPLIES THAT DON'T GET TANGLED.	<b>I WANT</b> CARD PRINTERS THAT MEET OUR ENVIRONMENTAL REQUIREMENTS.	<b>I WANT</b> ID CARD SOFTWARE THAT'S EASY TO USE.	<b>I WANT</b> TO MANAGE ID CARDS DIFFERENTLY.
<b>I WANT</b> CENTRAL MONITORING TECHNOLOGY.	<b>I WANT</b> MODULAR UPGRADES THAT PROTECT OUR INVESTMENT.	<b>WHAT SECURITY DEMANDS, DATACARD® ID SYSTEMS DELIVER.</b>	<b>I WANT</b> STRICTLY SECURE ID CARD PERFORMANCE.
<b>I WANT</b> ACCESS TO ALL INFORMATION.	<b>I WANT</b> SUPERIOR PRINT QUALITY WITH EXACTLY THE RIGHT COLORS.	<b>I WANT</b> FASTER CARD-PRINTING SO OUR PEOPLE DON'T HAVE TO WAIT.	<b>I WANT</b> A CARD KNOWLEDGE SUPPORT TEAM.

Whatever you need for a secure ID card program, you can get it from a Datacard® system. Datacard offers ID card printers, software and supplies — plus 40 years of experience and the support of authorized Datacard providers worldwide. To contact a provider near you, call +1.800.621.6972 or visit [datacard.com/id](http://datacard.com/id).

**Datacard** Group

Datacard is a registered trademark and/or service mark of DataCard Corporation in the United States and/or other countries. ©2011 DataCard Corporation. All rights reserved.

Visit [www.securityinfowatch.com/ste/inquiry](http://www.securityinfowatch.com/ste/inquiry) and select inquiry #363 for more information

# ENTERPRISE SECURITY & BUILDING MGMT.



## Detex EasyKit Systems

The Detex EasyKit catalog number specifies everything you need for virtually any application, with one price and no problems. Illustrated here is the AODx10ERx1S-1 Automatically Operated Door EasyKit, which integrates the Advantex latch retraction exit device with Detex's low energy, automatic operator with pre-wired, built-in latch retraction power supply. Also included are two wireless ADA activation buttons, a power transfer, code-compliant signage and an easy-to-follow wiring diagram, helping make installation easy and mistake-free. The Detex AODx10ERx1S-1 was designed by our customers for applications at assisted living homes, airports, healthcare, shopping centers and any application where access control and a low-energy, automatic operator is required. Choose a pre-wired EasyKit System, or work with Detex to create your custom EasyKit.

[www.detex.com](http://www.detex.com)  
Select enquiry #562

## Total Integrated Security Solution

Napco Security Technologies Inc. (NASDAQ: NSSC) is a leading manufacturer of a wide array of innovative security products, engineering advanced technologies for more than 3 decades. New Napco Fusion™ is a "total integrated security solution" that provides seamless, interoperability of intrusion and fire protection, video, access control and locking from Napco's synergistic divisions, Napco Intrusion & Fire, Alarm Lock Networx™, Continental CardAccess, and Marks USA. One security platform makes operation and deployment easier and more cost-effective than ever. Hardwire, wireless or hybrid technologies for flexible installation in any building/construction. For more contact us 1-800-645-9445.

[www.napcosecurity.com](http://www.napcosecurity.com)  
Select enquiry #563



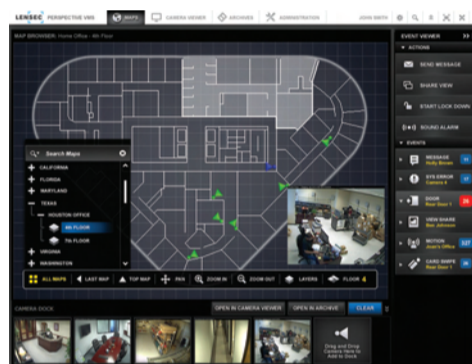
## Enterprise Security Management



OnSSI has added two new features to its Ocularis platform. VideoSynopsis, an optional embedded module, enables fast viewing of hours of video footage within the Ocularis Client view. OpenSight enables users to share information from video surveillance and other security systems outside their own system. The system puts information from large video surveillance and physical security systems at the operator's fingertips with an intuitive interface, touchscreen functionality and map-based navigation. The latest release of Ocularis is offered in four different feature sets, all scalable to virtually any number of cameras at multiple sites. This allows

users to meet their specific system needs and requirements while offering alerting and video analysis features that were once limited to enterprise-scale solutions.

[www.onssi.com](http://www.onssi.com)  
Select enquiry #564

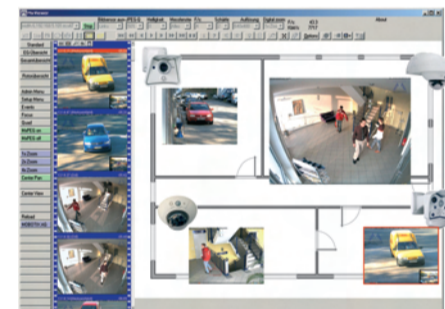


## Web-Based Video Management

Lensec's next-generation video management solution, Perspective VMS, is Built on the Microsoft Silverlight development platform and provides an easy-to-use, intuitive Web-based interface for real-time situational awareness and post-event forensic analysis. Systems range from a simple one-camera/single-site management interface to a multi-national monitoring platform.

The secure Internet application provides flexibility in a wired, wireless or remote environment, enabling a more diverse and flexible security workforce. The system integrates features previously available only with a thick client application, such as documentation and collaboration.

[www.lensec.com](http://www.lensec.com)  
Select enquiry #565



## Video Management Software

The MxControlCenter video management software by Mobotix can connect any number of cameras at any location into a straightforward and powerful video security system with centralized or local, user-based operation and evaluation. The advanced program, specifically tailored to the supplier's high-resolution network cameras, offers a user-friendly interface and camera display, convenient video search, practical alarm handling, automatic camera integration, video storage on file servers and a useful configuration and update assistant. The software is configured to allow an unlimited number of users and cameras with no license fee structure.

[www.mobotix.com](http://www.mobotix.com)  
Select enquiry #566

# LifeSaver™

by MARKSUSA®

**NEW  
ERGONOMIC  
KNOBS & LEVERS**  
PATENT #D587556

**HOSPITAL  
PUSH/PULL  
PADDLESETS**

## Complete Line Of Ligature Resistant Door Hardware

**Currently In Use @ Coney Island, NY  
Denver V.A. Hospital, CO • Jacobi, NY • Bellevue, NY  
Woodhull, NY • Santa Clara Valley Medical Center, CA  
And Many More!**

365 Bayview Ave, Amityville, NY 11701 • 631-225-5400 • 800-526-0233 • Fax 631-225-6136 • [www.marksusa.com](http://www.marksusa.com)

Visit [www.securityinfowatch.com/st/einquiry](http://www.securityinfowatch.com/st/einquiry) and select enquiry #364 for more information

# AUTOMOTIVE PRODUCTS



## Key Machine

The Bianchi Laser 994 has expanded capabilities with the introduction of a new jaw for edge cut keys. The 'F' jaw can be purchased with a new machine or added to an existing machine in the field. A new 1.5mm cutter, tracer and magnetic tip stop are required as well as a software update. The Laser 994 duplicates, cuts by code, decode or depths (including 1/2 depths) and features a complete database of codes built-in. Each unit includes A & C jaws and an extra 2.5mm universal cutter; B, D & F jaws and vacuum attachment sold separately. [www.bianchi1770usa.com](http://www.bianchi1770usa.com)  
**Select eInquiry #567**



## RKE Remotes

STRATTEC Security Corp. is adding RKE remotes to its traditional line of automotive lock and key products. The first round of remotes licensed for sale are from General Motors. This initial release has applications for later model GM vehicles from 2007-2012. Currently, eight remotes were released with more on the way. These remotes are factory originals and come in configurations anywhere from 3 to 6 buttons. All current GM part numbers can be found along with the applications at <http://aftermarket.strattec.com>. Want to be on our e-mail notification for new products? On the left-hand side of the home page, enter your e-mail address under "get e-mail updates" and hit OK. Follow the prompts and provide some basic info. We will let you when more new products become available. <http://aftermarket.strattec.com>  
**Select eInquiry #568**

## Ford Side Mill Keys

Ford is moving the majority of vehicle platforms to a global key design over the next several years. The first vehicle to feature the side mill key design is the 2011 Fiesta. STRATTEC also has ignition and door repair kits available. The 2012 Focus comes equipped with a side mill 4 button IKT key. The button configuration and functionality are the same as the current IKT keys. The blade is the side mill technology. Look for the introduction of ignition and door repair kits in the near future. The newly designed 2012 Escape will have a side mill 3 button IKT key. Look for this new key from STRATTEC later this year. <http://aftermarket.strattec.com>  
**Select eInquiry #569**



## TAKE PRIDE IN A JOB WELL DONE

**You wouldn't want to compromise your work and reputation – BUY STRATTEC ORIGINALS!**

The jobs you are most proud of are the ones that employed your special skills, product supplied by your STRATTEC authorized distributor, and product manufactured by the largest OE manufacturer of automotive locks and keys in the world.

For more information, please visit <http://aftermarket.strattec.com>

3333 West Good Hope Road | Milwaukee, WI | 877.251.8798

© 2011 STRATTEC SECURITY CORPORATION. All Rights Reserved. AS6938 - 10.11

# VISITOR MANAGEMENT

## Quantum Secure Visitor Identity Manager

Managing visitors, contractors and other temporary guests from check-in to the time they leave is critical to the security of your organization. For many organizations, the processes used to manage these visitors is manual in nature, resulting in errors and long visitor wait times — often creating corporate risk from unscrupulous visitors. Unfortunately, present-day solutions which try to address these problems lack the scalability of a global solution and do not possess the flexibility to respond quickly to changes in security policies. Additionally, these applications often exist in silos with limited integration with other security systems, thereby limiting the complete automation of the visitor processes.

SAFE Visitor Identity Manager from Quantum Secure manages all types of physical identities and automates the entire visitor identity management lifecycle. SAFE Visitor Identity Manager is a completely Web-based solution that includes capabilities for visitor pre-registration, registration, security checks and access authori-



zation, check-in/check-out, badge printing and centralized reporting, and audit trail functions.

SAFE Visitor Identity Manager provides one place to manage both central and regional policies for visitors. These policies can be easily defined and subsequently managed using an optional, easy-to-use graphical interface. SAFE also includes embedded workflow capabilities involving approvals for visitors, notifications, delegated administration, escalations and reminders along with a full audit trail.

Select elnquiry #570

**QUANTUMSECURE**

[www.quantumsecure.com](http://www.quantumsecure.com)

## Driver's License Scanner

EasyLobby has partnered with AssureTec Technologies to offer AssureTec's ID authentication system as part of EasyLobby's suite of visitor solutions, allowing users to scan driver's licenses for authenticity and accurately capture the information and the photo. The AssureTec ID-150 is capable of reading both sides of a driver's license simultaneously and automatically comparing the data on the magnetic strip or 2D barcode on the back of the license and the information on the front. It extracts all available data fields, as well as the photo, and within seconds runs multiple forensic tests specific to that license. All current issue and most previous issue licenses are supported from all U.S. states, Canadian provinces and many licenses from around the world.

[www.easylobby.com](http://www.easylobby.com)  
Select elnquiry #571



## Barrier-Free Optical Turnstile



Smarter Security Systems' Mini-Optical optical turnstile is ideal not just for lobby security applications, but also to restrict access through corridors and hallways. The unit is a barrier-free turnstile that restricts access where security staff can respond by alarming unauthorized entry attempts. Microprocessor-based intelligence combines with infrared beams to discriminate between human traffic and inanimate object to minimize false alarms. The pedestals are only 4 inches wide by 8.4 inches long, allowing the units to be placed in hallways to secure passage ahead of sensitive areas such as SCIFs. An available floor protector simplifies hallway installation, and it can be mounted to the walls of a

hallway for a more elegant installation. LED indicator lights at the top and bottom of each pedestal clearly communicate the lane status to users and to security staff to assist in detaining intruders.

[www.smartersecurity.com](http://www.smartersecurity.com)  
Select elnquiry #572

# POWER & TRANSMISSION SOLUTIONS

## Outdoor Power Supplies



Altronix has introduced its line of Waypoint Outdoor Power Supplies, which deliver added functionality and system versatility in a variety of models offering a complete

power solution for outdoor security and video surveillance products. The power supplies are designed to operate single or multiple cameras or devices, offering both 24VAC and 28VAC simultaneously, or 12VDC or 24VDC with features that include 115VAC/230VAC or 277VAC input and LED power status indicators. To ensure reliability in outdoor or harsh internal environments, all models feature a lightweight IP66/NEMA4/4X rated outdoor enclosure with lockable stainless latches. Integral flanges provide easier handling and mounting.

[www.altronix.com](http://www.altronix.com)  
Select elnquiry #573

## PoE Fiber Optic Media Converter

ComNet has expanded its Ethernet product line by introducing a 1000FX fiber optic media converter with Power over Ethernet (PoE). The CNGE2M-CPOE provides a PoE function to compatible peripheral devices and supports the latest IEEE 802.3at PoE standard for use for as Power Sourcing Equipment (PSE), supplying up to 25 Watts of power. Designed for use in harsh environments, these products allow 10/100/1000TX Ethernet data to be transmitted optically over either multimode or single mode optical fiber, by application-specific, optional SFP modules.

With many end-users' desire to exceed the existing 100 meter transmission distance limitation of CAT-5e cabling, this PoE solution can extend the transmission distance significantly with no loss of bandwidth.

[www.comnet.net](http://www.comnet.net)  
Select elnquiry #574



## Power Management System

Providing flexible, intelligent power monitoring and management for AV systems, Middle Atlantic Products' RackLink suite features extensive monitoring and preemptive support functions. The products are capable of maintaining AV system reliability through automatic actions that include automatic reboot, turning on emergency fans and shutting down equipment for safety in overload or over-temperature conditions. The system can be configured and managed for any level system ranging from simple to complex. It can be managed locally or remotely via standard browser-based user interface and integrates easily with control systems via open-architecture API. Free mobile apps that provide instantaneous insight and control are available for iPhone/ iPad and Android devices.

[www.middleatlantic.com](http://www.middleatlantic.com)  
Select elnquiry #575

## H.264 Network Encoders

Vicon Industries Inc., a leading designer and producer of network video management systems, introduces two new H.264 network encoders, a 4-channel and 16-channel model, that convert analog camera inputs (both NTSC/EIA and PAL/CCIR) into streamed IP video data. Advanced features such as museum search — which permits users to conduct quick analysis of recorded events — are provided when the device is used as part of a ViconNet Video Management System (VMS). The encoder devices are easy to install and configure within ViconNet using an exclusive setup utility that enables quick assignment of an IP address. Full PTZ control, alarm reporting, picture quality configuration, external sensors, macros and alarm configurations are supported.

[www.vicon-security.com](http://www.vicon-security.com)  
Select elnquiry #576





**Access Control for every application.**

**HEALTHCARE**

**EDUCATION**

**GOVERNMENT**

**AIRPORTS**

Because budgets and timelines keep shrinking while access requirements are escalating, there's a cost-saving Alarm Lock standalone or wireless networked access lock available for every application, door and opening. Scalable, interoperable, dependable. Physical security and IT-friendly. Free Windows-based software. Lowest maintenance costs.

Choose Trilogy® standalone locks or Networx™ networked wireless models, all offer a robust access control alternative at a fraction of the cost of hardwired access, installed in about an hour. The broadest line of advanced electronic locks, Alarm Lock has coded or HID® ID access locks in Grade 1 cylindrical or mortise styles, and special application models, such as: Dual-sided, narrow stile glass door,

buttonless vandal-proof; privacy & global lockdown locks, exit trim models, audit-trail keypads and a wireless keypad solution for use with strikes and mags.

But just don't take our word for it, take a video tour of the line at <http://bit.ly/vR1FHm> or for more info, contact your Alarm Lock Sales representative, call 1-800-ALA-LOCK or visit [www.alarmlock.com](http://www.alarmlock.com)



**ALARM LOCK**

Visit [www.securityinfowatch.com/ste/enquiry](http://www.securityinfowatch.com/ste/enquiry) and select enquiry #366 for more information

# Did you know...



## Schlage AD-Series is flexible, adaptable, scalable and available at Security Lock Distributors.

Now you can get the most adaptable lock in the business from the industry's most versatile distributor.

The Schlage AD-Series is the only lock that supports multiple credential types and lets you upgrade any time without taking the lock off the door. Our electronic access control experts can tell you where and how to use the AD-Series, and how best to integrate it with the system you already have in place.

No matter what your challenge, Security Lock Distributors delivers unparalleled service you can depend on. From integrating electronic and mechanical hardware solutions, to the industry's most extensive in-stock inventory and best online technical library. Security Lock Distributors has a solution for... Every budget. Every schedule. Every time.

### Now you know...

**800-847-5625**  
**WWW.SECLOCK.COM**

**SECURITY**  
**LOCK DISTRIBUTORS**

Boston, MA Pompano Beach, FL Chicago, IL Las Vegas, NV